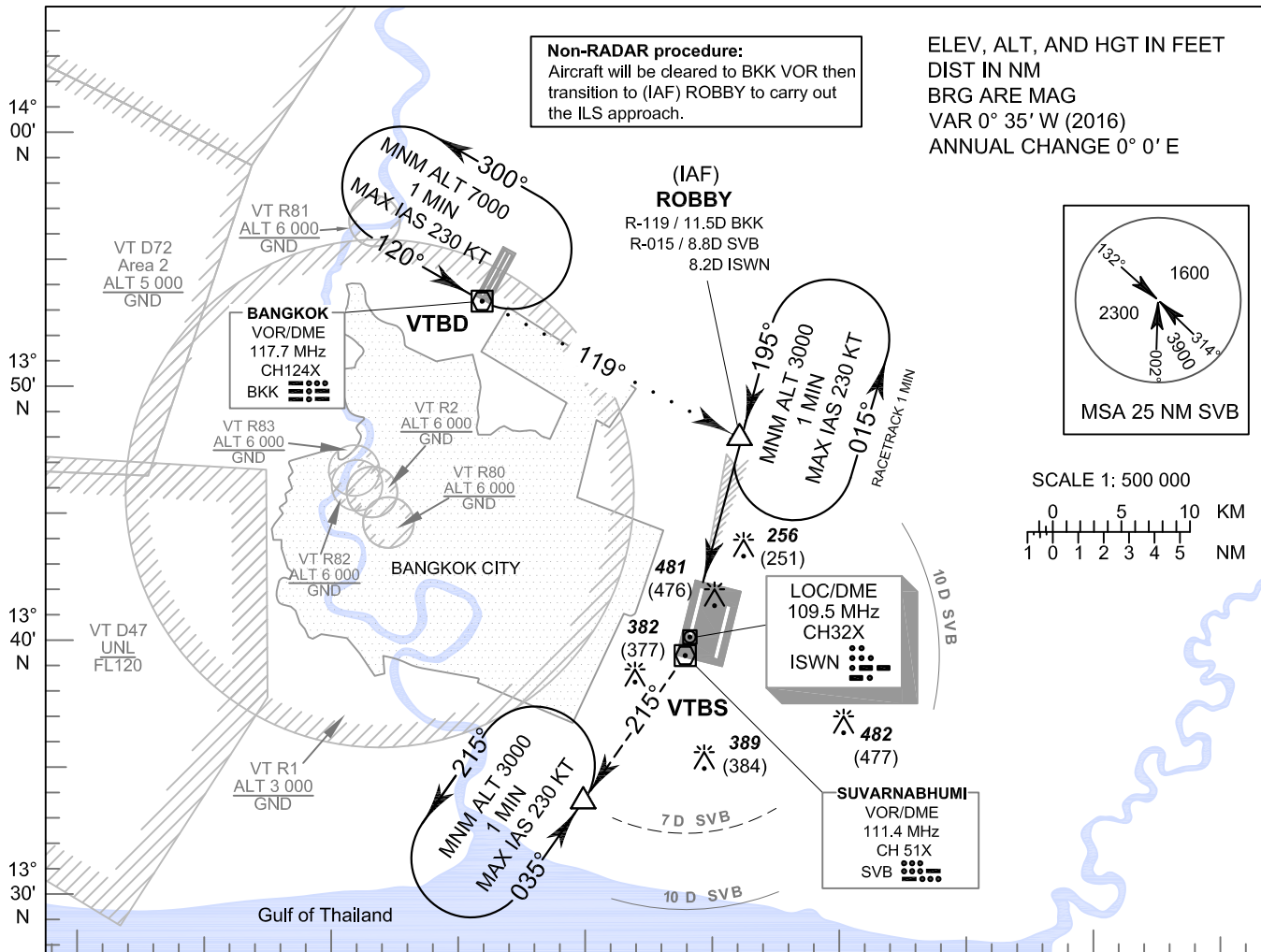


INSTRUMENT APPROACH CHART - ICAO **AERODROME ELEV 5 FT**
HEIGHTS RELATED TO THR RWY19R - ELEV 5 FT

APP	: 119.1, 262.5
	: 120.3, 262.5
	: 128.95, 262.5
	: 122.35, 262.5
	: 124.35, 262.5
	: 125.2, 262.5
ARR	: 121.1
	: 126.3
TWR	: 118.2, 274.5
	: 119.0
ARR ATIS	: 133.6, 278.6

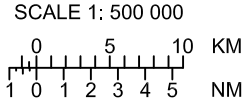
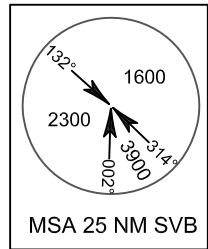
BANGKOK / Suvarnabhumi Intl (VTBS)

ILS or LOC y RWY19R
CAT II

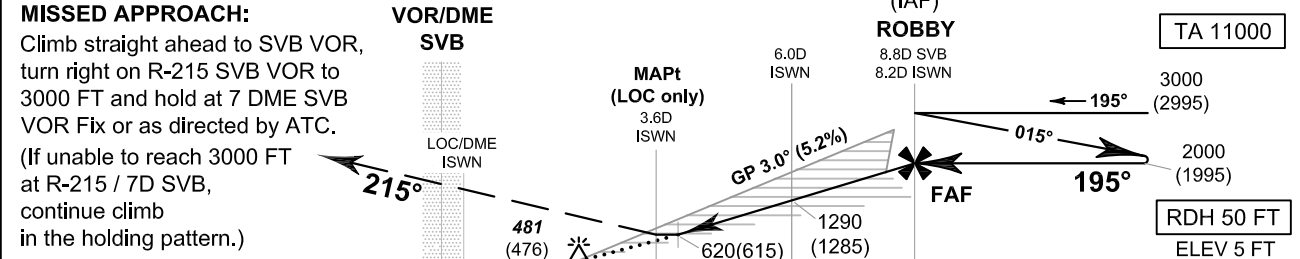


Non-RADAR procedure:
Aircraft will be cleared to BKK VOR then transition to (IAF) ROBBY to carry out the ILS approach.

ELEV, ALT, AND HGT IN FEET
DIST IN NM
BRG ARE MAG
VAR 0° 35' W (2016)
ANNUAL CHANGE 0° 0' E



100° 20' E 100° 30' E 100° 40' E 100° 50' E 101° 00' E



MISSED APPROACH:
Climb straight ahead to SVB VOR, turn right on R-215 SVB VOR to 3000 FT and hold at 7 DME SVB VOR Fix or as directed by ATC.
(If unable to reach 3000 FT at R-215 / 7D SVB, continue climb in the holding pattern.)

		NM FM THR RWY19R				DME FM ISWN		D0.0		0 NM		5 NM		10 NM	
		A	B	C	D	ISWN DME	MAPt	4.0	5.0	6.0	7.0	8.0	FAF		
Straight-in Approach	CAT I	205 (200)				Altitudes	620	650	970	1290	1610	1920	2000		
	CAT II	105 (100)				Speed / Knots			100	120	140	160	180		
LOC only		620 (615)				FAF - MAPt 4.6 NM			2 : 45	2 : 18	1 : 58	1 : 43	1 : 32		
Circling (OCH AAL)		800 (795)		900 (895)		Rate of descent (ft/min)			530	640	745	850	955		

CHANGE: APP FREQ. ARR ATIS ADDED.