

**STANDARD DEPARTURE CHART-
INSTRUMENT (SID) - ICAO**

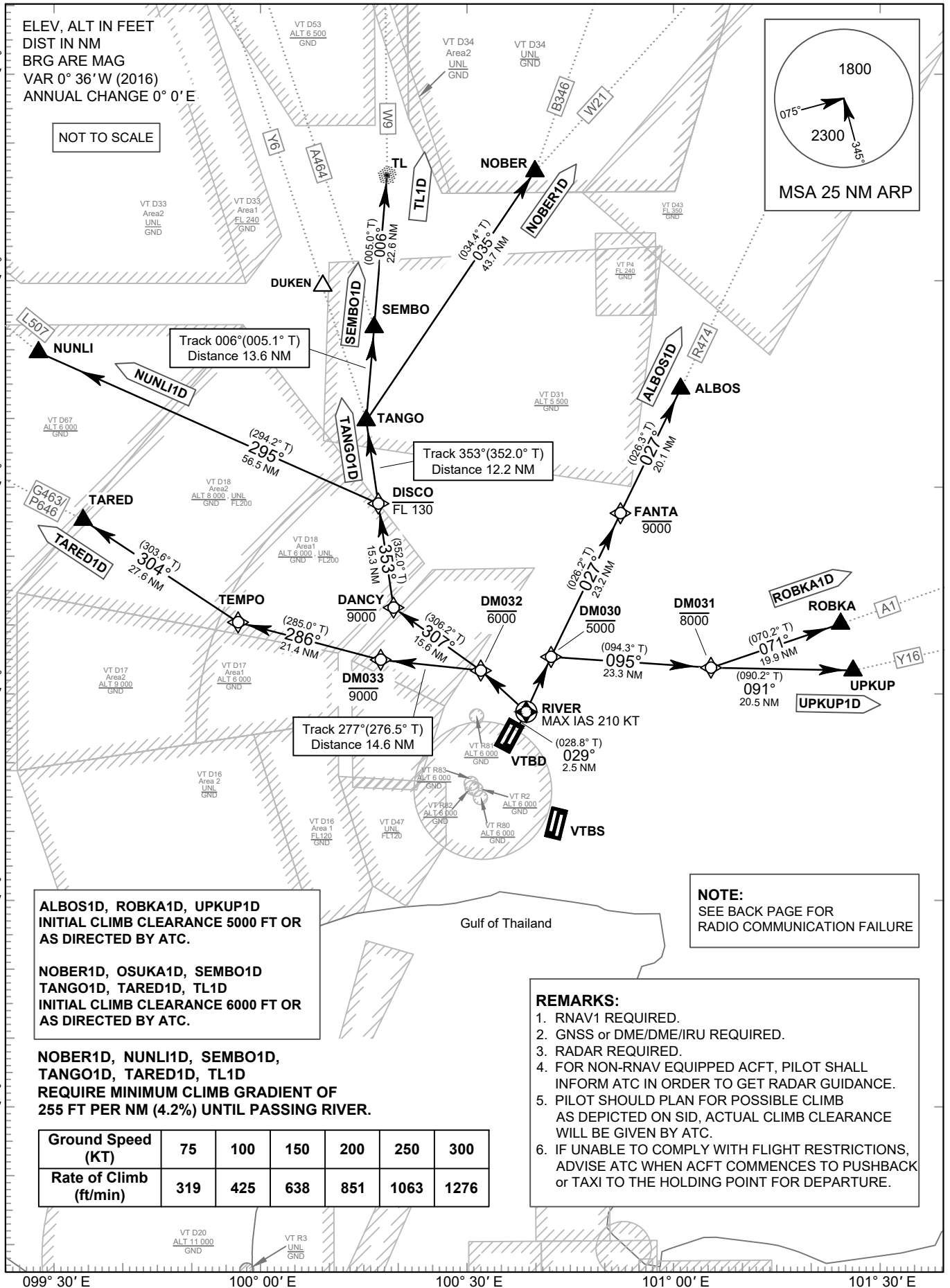
TRANSITION ALTITUDE
11000 FT

SPEED RESTRICTION
MAX IAS 250 KT AT OR
BELOW ALT 10000 FT
UNLESS OTHERWISE
AUTHORIZED BY ATC.

APP : 119.1, 262.5
: 119.4, 262.5
: 120.3, 262.5
: 128.95, 262.5
: 122.35, 262.5
: 124.35, 262.5
: 125.2, 262.5
DAR : 133.0, 262.5
TWR : 118.1, 236.6
DEP ATIS : 118.55

**BANGKOK/Don Mueang Intl (VTBD)
RNAV RWY03R**

ALBOS1D NOBER1D NUNLI1D
ROBKA1D SEMBO1D TANGO1D
TARED1D TL1D UPKUP1D



ALBOS1D, ROBKA1D, UPKUP1D
INITIAL CLIMB CLEARANCE 5000 FT OR
AS DIRECTED BY ATC.

NOBER1D, OSUKA1D, SEMBO1D
TANGO1D, TARED1D, TL1D
INITIAL CLIMB CLEARANCE 6000 FT OR
AS DIRECTED BY ATC.

NOBER1D, NUNLI1D, SEMBO1D,
TANGO1D, TARED1D, TL1D
REQUIRE MINIMUM CLIMB GRADIENT OF
255 FT PER NM (4.2%) UNTIL PASSING RIVER.

Ground Speed (KT)	75	100	150	200	250	300
Rate of Climb (ft/min)	319	425	638	851	1063	1276

NOTE:
SEE BACK PAGE FOR
RADIO COMMUNICATION FAILURE

REMARKS:

1. RNAV1 REQUIRED.
2. GNSS or DME/DME/IRU REQUIRED.
3. RADAR REQUIRED.
4. FOR NON-RNAV EQUIPPED ACFT, PILOT SHALL INFORM ATC IN ORDER TO GET RADAR GUIDANCE.
5. PILOT SHOULD PLAN FOR POSSIBLE CLIMB AS DEPICTED ON SID, ACTUAL CLIMB CLEARANCE WILL BE GIVEN BY ATC.
6. IF UNABLE TO COMPLY WITH FLIGHT RESTRICTIONS, ADVISE ATC WHEN ACFT COMMENCES TO PUSHBACK or TAXI TO THE HOLDING POINT FOR DEPARTURE.

CHANGE: APP FREQ. DAR FREQ. DEP ATIS ADDED.