

Phone: +662 568 8831
Fax: +662 576 1903
AFTN: VTBAYOYX
E-mail: aisthai@caat.or.th
ais@caat.or.th

THE CIVIL AVIATION AUTHORITY OF THAILAND
Aeronautical Information Services Department
333/105 Lak Si Plaza, Khamphaeng Phet 6 Rd.,
Talat Bang Khen, Lak Si, Bangkok 10210 Thailand

AIRAC
AIP SUPPLEMENT

A 21/21
21 OCT 2021

THE CONSTRUCTION OF TAXIWAY D EXTENSION AND OPERATIONAL RESTRICTIONS OF TAXIWAY E AND RUNWAY 01L/19R AT SUVARNABHUMI INTERNATIONAL AIRPORT

1 INTRODUCTION

With effect from 2 December 2021 at 0000 UTC to 9 April 2023 at 2359 UTC, the purpose of this AIRAC AIP Supplement is to inform all concerned regarding operational restrictions of Taxiway E and Runway 01L/19R during the construction of Taxiway D extension at Suvarnabhumi International Airport. The construction will be divided into 2 phases. The details are as follows:

2 SCOPE OF WORKS

2.1 PHASE 1: INSTALLATION OF TEMPORARY FENCE

2.1.1 THE CLOSURE OF TAXIWAYS

From 2 December 2021 at 0000 UTC to 14 December 2021 at 2359 UTC, the following taxiways will be closed due to temporary fences installation:

- Taxiway E between Taxiway E13 and Taxiway E19.
- Taxiway E15.

2.1.2 MARKINGS AND LIGHTING

2.1.2.1 During Installation of temporary fences, the details of markings and lighting on associated areas are as follows:

- Closure markings (yellow crosses) are displayed on a closed portion of taxiways.
- Taxiway centre line lights, taxiway edge lights, taxiway signage leading to and on Taxiway E between Taxiway E13 and Taxiway E19, Taxiway E15 will be unserviceable.
- Rapid exit taxiway indicator lights (RETILs) on exit Taxiway E15 will be unserviceable.

2.1.2.2 The closed areas will be blocked off by 1 metre-high frangible barricades which painted in alternate bands of red and white, barricades will be lighted by omni-directional fixed red lights spacing every 3 M at night and during limited visibility conditions along the sections of the closed areas.

2.1.2.3 Construction area lay-out is shown in attachment A1.

2.1.3 OPERATIONAL RESTRICTIONS

2.1.3.1 Runway 19R:

- Due to closure area on Taxiway E, arriving aircraft are expected to exit the runway via Taxiway E9 or E13.
- Aircraft that are unable to vacate runway via Taxiway E9 or E13 shall continue taxiing on the runway and vacate via Taxiway E19. After vacating, pilots will be instructed to TURN RIGHT onto Taxiway E, E21 and hold short of Runway 19R.

Remark: Pilots who expect to vacate other than exit Taxiway E9 or E13 shall advise Bangkok Approach soon as practicable to enable ATC to apply additional spacing on final approach.

2.1.3.2 Runway 01L:

- All departing aircraft will be instructed to enter the runway via Taxiway E5 and taxiing on the runway and vacate via Taxiway E19 then TURN RIGHT onto Taxiway E, E21 and hold short of Runway 01L.

2.2 PHASE 2: CONSTRUCTION OF TAXIWAY D EXTENSION

2.2.1 THE RESTRICTIONS OF TAXIWAYS

2.2.1.1 From 15 December 2021 at 0000 UTC to 9 April 2023 at 2359 UTC, Taxiway E between Taxiway E13 and Taxiway E19 is affected by construction of Taxiway D extension.

2.2.1.2 The distance between taxiway centre line of Taxiway E (between Taxiway E13 and Taxiway E19) and the temporary fences is 28.30 M.

2.2.1.3 Taxiway E between Taxiway E13 and Taxiway E19, Taxiway E15 are able to accommodate aircraft of size up to code C (Wingspan less than 36 M).

2.2.2 MARKINGS AND LIGHTING

2.2.2.1 All construction areas will be blocked off by construction fences, as of the following coordinates:

No.	Coordinates
1st	134013.14N 1004411.72E
2nd	134012.81N 1004413.08E
3rd	134019.80N 1004414.91E
4th	134020.14N 1004413.58E
5th	134048.71N 1004421.09E

2.2.2.2 The dimension of fences is 3 metre-high painted in alternate band of red and white, fences will be lighted by omni-directional fixed red lights spacing every 7.5 M at night and during limited visibility condition.

2.2.2.3 Jet blast fences will be established along construction fences at Taxiway E15, Taxiway E19 and Taxiway E21 intersection. The dimension of fences is 2.5 metre-high painted in alternate band of red and white.

2.2.2.4 "MAX SPAN 36 M" signage and marking will be installed and painted on Taxiway E prior to Taxiway E13 and prior to Taxiway E19, and on Taxiway E15 to provide a visual cue of the downgraded of Taxiway E between Taxiway E13 and Taxiway E19.

2.2.2.5 Construction area lay-out is shown in attachment A2.

2.2.3 OPERATIONAL RESTRICTIONS

During the construction of Taxiway D extension, aircraft Code D E F shall use Runway 01L/19R under restrictions, as follows:

2.2.3.1 Runway 19R:

- Due to closure area on Taxiway E, arriving aircraft are expected to exit the runway via Taxiway E9 or E13.

- Aircraft that are unable to vacate runway via Taxiway E9 or E13 shall continue taxiing on the runway and vacate via Taxiway E19. After vacating, pilots will be instructed to TURN RIGHT onto Taxiway E, E21 and hold short of Runway 19R.

Remark: Pilots who expect to vacate other than exit Taxiway E9 or E13 shall advise Bangkok Approach soon as practicable to enable ATC to apply additional spacing on final approach.

2.2.3.2 Runway 01L:

- Departing aircraft will be instructed to enter the runway via Taxiway E5 and taxiing on the runway and vacate via Taxiway E19 then TURN RIGHT onto Taxiway E, E21 and hold short of Runway 01L.

Remark: Runway 01L/19R and Taxiway E between Taxiway E13 and Taxiway E19 are available for operation without restriction for aircraft up to Code C.

3 OTHERS

3.1 During construction period, pilots are advised to take precautions when operating near the construction areas.

3.2 For machineries work height over Obstacle limitation surface and Obstacle chart type A, they will be notified by either NOTAM or AIP supplement.

3.3 There will be a runway closure program for maintenance which will be notified by either NOTAM or AIP Supplement. When Runway 01R/19L is closed, aircraft shall use Runway 01L/19R for operation under restricted conditions.

3.4 Due to expected congestions and high possibilities of airborne delay, airlines are advised to avoid using Suvarnabhumi International Airport (VTBS) as the alternate aerodrome and extra fuel should be taken into account during construction period when Runway 01R/19L are closed.

4 CONTACT

For further information contact via the following:

Unit: Aeronautical Information Service Sub-Division of Suvarnabhumi International Airport

Tel: +662 132 6931-4

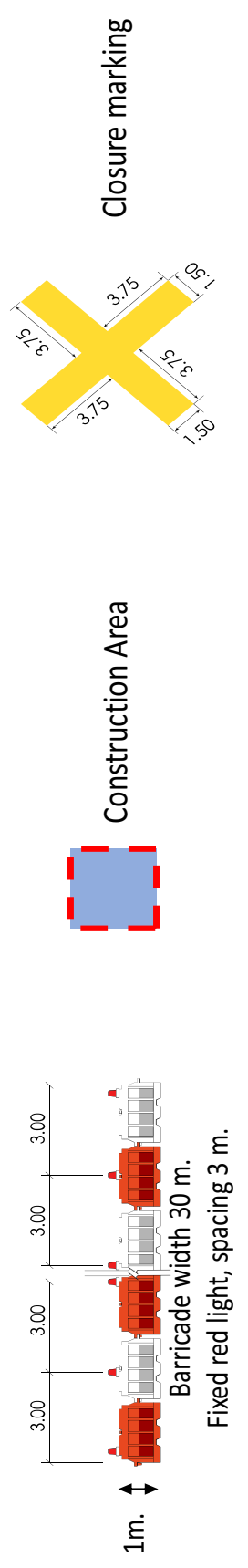
Mobile: +666 2598 0608

E-mail: ais_vtbs@airportthai.co.th

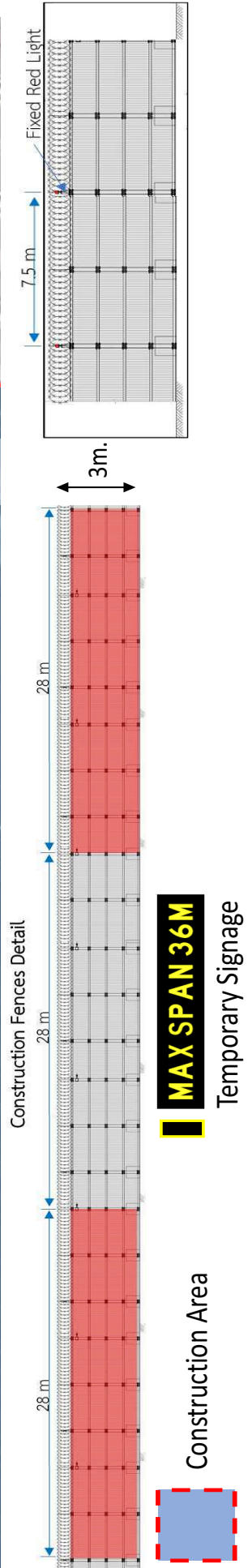
5 VALIDITY

This AIRAC AIP Supplement will remain current until 9 April 2023 at 2359 UTC. Any changes of this AIRAC AIP Supplement will be notified by NOTAM.

Construction Area phase 1



Construction Area phase 2



- END -