

VTUA AD 2.1 AERODROME LOCATION INDICATOR AND NAME

VTUA - BURIRAM / BURI RAM AIRPORT

VTUA AD 2.2 AERODROME GEOGRAPHICAL AND ADMINISTRATIVE DATA

1	ARP coordinates and site at AD	151336.36N 1031504.41E
2	Direction and distance from (city)	30 KM from city
3	Elevation/Reference temperature	590 FT / 28°C
4	Geoid Undulation at AD ELEV PSN	NIL
5	MAG VAR/Annual change	0°44' W (2016) / 0°1' W
6	AD Administration, address, telephone, telefax, telex, AFS	Director of Buri Ram Airport Buri Ram Airport 143 Moo 12, Tambon Ronthong, Amphoe Satuk, Buri Ram Province 31150 Thailand Tel: +664 466 6341 Fax: +664 466 6340 AFS: VTUOYDYX
7	Types of traffic permitted (IFR/VFR)	IFR/VFR
8	Remarks	Operator: Department of Airports

VTUA AD 2.3 OPERATIONAL HOURS

1	Aerodrome Operator	2300-1300
2	Customs and immigration	On request
3	Health and sanitation	On request
4	AIS Briefing Office	NIL
5	ATS Reporting Office (ARO)	2300-1300
6	MET Briefing Office	NIL
7	ATS	2300-1300
8	Fuelling	NIL
9	Handling	NIL
10	Security	NIL
11	De-icing	NIL
12	Remarks	ATS Reporting Office (ARO): Located at Ubon Ratchathani Air Traffic Control Centre (1st floor of tower building) Tel: +668 9488 2157 Fax: +664 524 0798 Ext. 7874

VTUA AD 2.4 HANDLING SERVICES AND FACILITIES

1	Cargo-handling facilities	NIL
2	Fuel/oil types	NIL
3	Fuelling facilities/capacity	NIL
4	De-icing facilities	NIL
5	Hangar space for visiting aircraft	NIL
6	Repair facilities for visiting aircraft	NIL
7	Remarks	NIL

VTUA AD 2.5 PASSENGER FACILITIES

1	Hotels	In the city
2	Restaurants	In the city
3	Transportation	Limousine and Car rental from the airport
4	Medical facilities	First aid at AD and hospital in the city
5	Bank and Post Office	In the city
6	Tourist Office	NIL
7	Remarks	NIL

VTUA AD 2.6 RESCUE AND FIRE FIGHTING SERVICES

1	AD category for fire fighting	Category 6
2	Rescue equipment	Yes
3	Capability for removal of disabled aircraft	NIL
4	Remarks	NIL

VTUA AD 2.7 SEASONAL AVAILABILITY - CLEARING

1	Types of clearing equipment	NIL
2	Clearance priorities	NIL
3	Remarks	The aerodrome is available all seasons.

VTUA AD 2.8 APRONS, TAXIWAYS AND CHECK LOCATIONS/POSITIONS DATA

1	Apron surface and strength	Surface: Concrete and asphalt Strength: PCN 45/R/C/X/T
2	Taxiway width, surface and strength	Width: 23 M Surface: Asphalt Strength: PCN 42/F/C/X/T
3	Altimeter checkpoint location and elevation	NIL
4	VOR checkpoints	NIL
5	INS checkpoints	NIL
6	Remarks	NIL

VTUA AD 2.9 SURFACE MOVEMENT GUIDANCE AND CONTROL SYSTEM AND MARKINGS

1	Use of aircraft stand ID signs, TWY guide lines and visual docking/parking guidance system of aircraft stands	Yes
2	RWY and TWY markings and LGT	RWY and TWY EDGE: Marked and Lighted
3	Stop bars	NIL
4	Remarks	NIL

VTUA AD 2.10 AERODROME OBSTACLES

In approach/TKOF areas			In circling areas and at AD		Remarks
1			2		3
RWY/Area affected	Obstacle type Elevation Markings/LGT	Coordinates	Obstacle type Elevation Markings/LGT	Coordinates	
a	b	c	a	b	
NIL	NIL	NIL	NIL	NIL	NIL

VTUA AD 2.11 METEOROLOGICAL INFORMATION PROVIDED

1	Associated MET Office	Aeronautical Meteorological Station-Buri Ram, Lower Northeastern Meteorological Center, Thai Meteorological Department (TMD)
2	Hours of service MET Office outside hours	2200-1300 NIL
3	Office responsible for TAF preparation Periods of validity	Supply TAF from Lower Northeastern Meteorological Center 24 HR
4	Type of landing forecast Interval of issuance	TREND 1 HR
5	Briefing/consultation provided	Personal Consultation Tel: +669 8282 4412
6	Flight documentation Language(s) used	NIL
7	Charts and other information available for briefing or consultation	S, U85, Daily Weather Forecast, satellite and radar images
8	Supplementary equipment available for providing information	Automated Weather Observation System (AWOS)
9	ATS units provided with information	Buri Ram TWR
10	Additional information (limitation of service, etc.)	NIL

VTUA AD 2.12 RUNWAY PHYSICAL CHARACTERISTICS

Designations RWY NR	TRUE BRG	Dimensions of RWY(M)	Strength (PCN) and surface of RWY and SWY	THR coordinates RWY end coordinates THR geoid undulation	THR elevation and highest elevation of TDZ of precision APP RWY
1	2	3	4	5	6
04	035.57°	2100x45	PCN 42/F/C/X/T Concrete and asphalt	151318.31N 1031451.34E	THR 590 FT TDZ 590 FT
22	215.57°	2100x45	PCN 42/F/C/X/T Concrete and asphalt	151414.36N 1031531.92E	THR 561 FT TDZ 578 FT

Slope of RWY-SWY	SWY dimensions (M)	CWY dimensions (M)	Strip dimensions (M)	OFZ	Remarks
7	8	9	10	11	12
NIL	450x60	NIL	3120x300	NIL	NIL
NIL	450x60	NIL	3120x300	NIL	NIL

VTUA AD 2.13 DECLARED DISTANCES

RWY Designator	TORA (M)	TODA (M)	ASDA (M)	LDA (M)	Remarks
1	2	3	4	5	6
04	2100	2100	2550	2100	NIL
22	2100	2100	2550	2100	NIL

VTUA AD 2.14 APPROACH AND RUNWAY LIGHTING

RWY Designator	APCH LGT type LEN INTST	THR LGT colour WBAR	VASIS (MEHT) PAPI	TDZ, LGT LEN	RWY Centre Line LGT Length, spacing, colour, INTST	RWY edge LGT LEN, spacing, colour INTST	RWY End LGT colour WBAR	SWY LGT LEN (M) colour	Remarks
1	2	3	4	5	6	7	8	9	10
04	NIL	Green WBAR	PAPI Both 3°	NIL	NIL	2100 M 60 M White, LIH	Red	NIL	NIL
22	NIL	Green WBAR	PAPI Both 3°	NIL	NIL	2100 M 60 M White, LIH	Red	NIL	NIL

VTUA AD 2.15 OTHER LIGHTING, SECONDARY POWER SUPPLY

1	ABN/IBN location, characteristics and hours of operation	ABN: At tower building, FLG W G EV 3 SEC.
2	LDI location and LGT Anemometer location and LGT	NIL
3	TWY edge and centre line lighting	Edge: All taxiways
4	Secondary power supply/switch-over time	Secondary power supply to all lighting at the airport, Switch-over time : 12 SEC.
5	Remarks	NIL

VTUA AD 2.16 HELICOPTER LANDING AREA

1	Coordinates TLOF or THR of FATO Geoid undulation	NIL
2	TLOF and/or FATO elevation M/FT	NIL
3	TLOF and FATO area dimensions, surface, strength, marking	NIL
4	True and MAG BRG of FATO	NIL
5	Declared distance available	NIL
6	APP and FATO lighting	NIL
7	Remarks	NIL

VTUA AD 2.17 ATS AIRSPACE

1	Designation and lateral limits	A circle of 5 NM Radius centred on BRM DVOR/DME (151422.43N1031531.59E)
2	Vertical limits	2000 FT/AGL
3	Airspace classification	C
4	ATS unit call sign Language(s)	Buri Ram Tower English, Thai
5	Transition altitude	11000 FT
6	Remarks	NIL

VTUA AD 2.18 ATS COMMUNICATION FACILITIES

Service designation	Call sign	Frequency	Hours of operation	Remarks
1	2	3	4	5
APP	Buri Ram Approach	125.55 MHZ 121.5 MHZ ¹⁾	As AD OPR HR	¹⁾ Emergency frequency
TWR	Buri Ram Tower	118.05 MHZ 236.6 MHZ 121.5 MHZ ¹⁾	As AD OPR HR	
ATIS	Buri Ram Airport	127.05 MHZ	As AD OPR HR	

VTUA AD 2.19 RADIO NAVIGATION AND LANDING AIDS

Type of aid, MAG VAR CAT of ILS/MLS (For VOR/ILS/MLS, give declination)	ID	Frequency	Hours of operation	Position of transmitting antenna coordinates	Elevation of DME transmitting antenna	Remarks
1	2	3	4	5	6	7
NDB	BR	303 KHZ	H24	151419.18N 1031509.15E		Coverage 50 NM clockwise orbit data refer from commissioning checked as follows: – Bearing 001°-360° at altitude 1 700 FT
DVOR/DME	BRM	117.2 MHZ CH119X	H24	151422.43N 1031531.59E		DVOR/DME restriction due to mountainous terrain surround DVOR/DME station, coverage check does not provide adequate signal clockwise orbit 40 NM at required altitude in various areas as follows: – Radial 091°-140° altitude should not below 3 500 FT – Radial 141°-240° altitude should not below 5 000 FT – Radial 241°-280° altitude should not below 4 000 FT – Radial 281°-090° altitude should not below 2 500 FT
LOC RWY04 ILS CAT I	IBRM	109.3 MHZ	H24	151427.29N 1031541.27E		LOC: Designated operation coverage 18 NM, ALT 7000 FT AMSL.
GP		332 MHZ	H24	151327.74N 1031454.49E		GP: 3 DEG, RDH 50 FT
DME	IBRM	CH30X (109.3 MHZ)	H24	151429.12N 1031539.63E	543.43 FT	DME: Paired with LOC FREQ.

VTUA AD 2.20 LOCAL AERODROME REGULATIONS

All aircraft code letter C and higher are not allowed to turn on runway. The turn shall be made on the runway turn pad only. Any breach done by the aircraft operator shall be recorded and reported to The Civil Aviation Authority of Thailand/The Headquarter of that operator shall be liable for the compensation caused by such violation.

VTUA AD 2.21 NOISE ABATEMENT PROCEDURES

NIL

VTUA AD 2.22 FLIGHT PROCEDURES

NIL

VTUA AD 2.23 ADDITIONAL INFORMATION

- Birds concentration on and in the vicinity of an aerodrome.

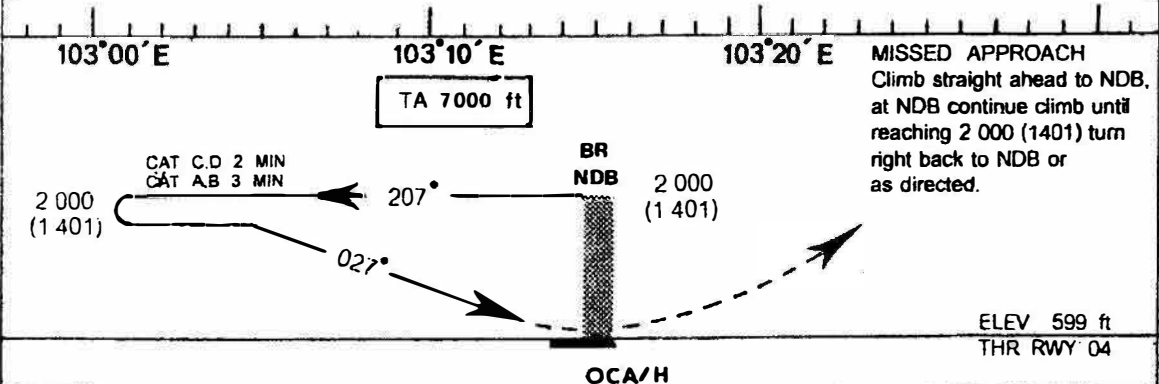
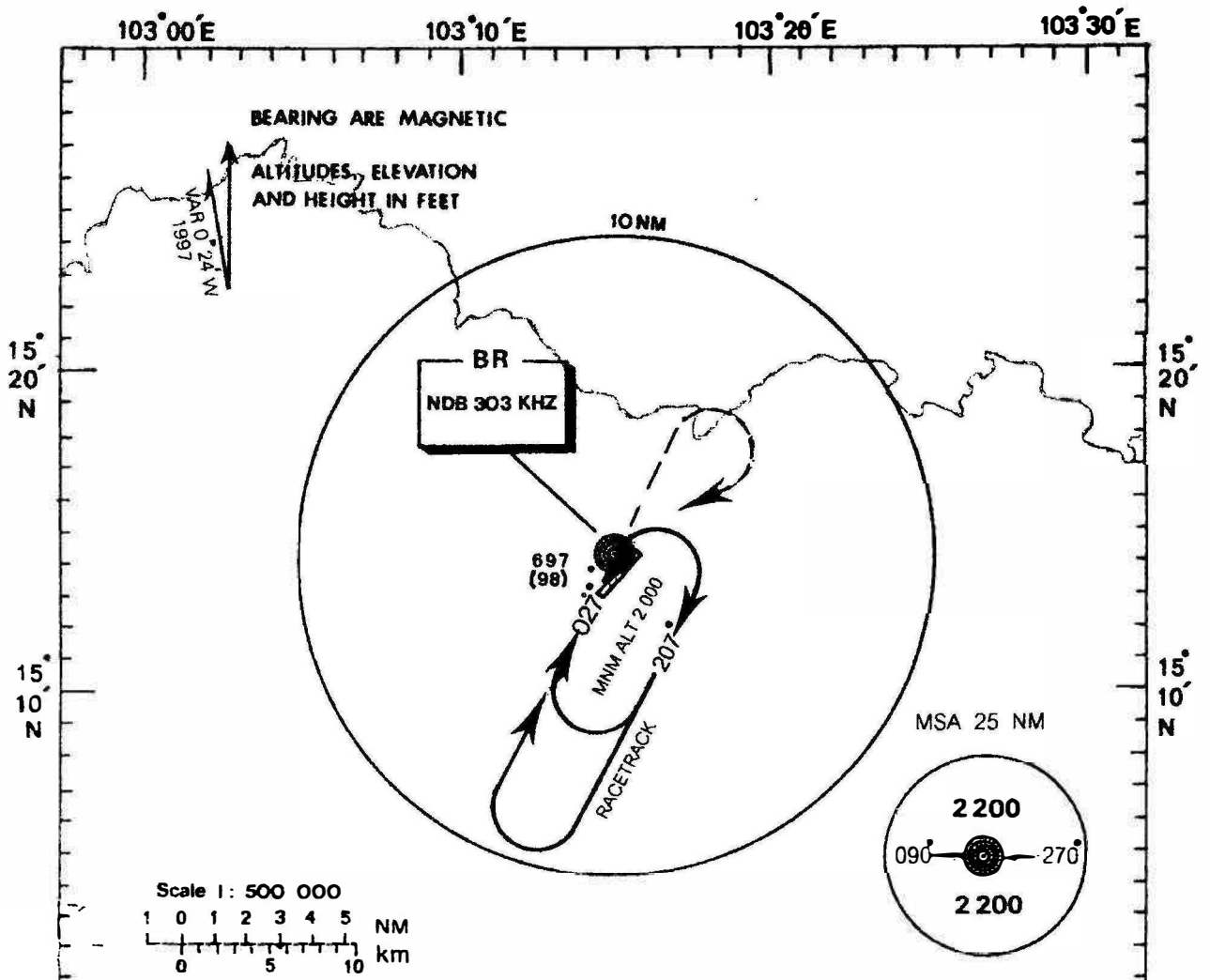
VTUA AD 2.24 CHARTS RELATED TO AN AERODROME

Chart name	Page
Aerodrome Chart - ICAO	AD 2-VTUA-2-1
Instrument Approach Chart - ICAO - NDB RWY 04	AD 2-VTUA-8-1
Instrument Approach Chart - ICAO - VOR RWY 04	AD 2-VTUA-8-3
Instrument Approach Chart - ICAO - VOR RWY 04 (Fix and point list table)	AD 2-VTUA-8-4
Instrument Approach Chart - ICAO - VOR RWY 22	AD 2-VTUA-8-5
Instrument Approach Chart - ICAO - VOR RWY 22 (Fix and point list table)	AD 2-VTUA-8-6
Instrument Approach Chart - ICAO - ILS or LOC y RWY 04	AD 2-VTUA-8-7
Instrument Approach Chart - ICAO - ILS or LOC y RWY 04 (Fix and point list table)	AD 2-VTUA-8-8
Instrument Approach Chart - ICAO - ILS or LOC z RWY 04	AD 2-VTUA-8-9
Instrument Approach Chart - ICAO - ILS or LOC z RWY 04 (Tabular description)	AD 2-VTUA-8-10
Instrument Approach Chart - ICAO - ILS or LOC z RWY 04 (Fix and point list table)	AD 2-VTUA-8-11
Instrument Approach Chart - ICAO - ILS or LOC z RWY 04 (Waypoint list table)	AD 2-VTUA-8-12
Instrument Approach Chart - ICAO - RNP RWY 04	AD 2-VTUA-8-13
Instrument Approach Chart - ICAO - RNP RWY 04 (Tabular description)	AD 2-VTUA-8-14
Instrument Approach Chart - ICAO - RNP RWY 04 (Waypoint list table)	AD 2-VTUA-8-15
Instrument Approach Chart - ICAO - RNP RWY 22	AD 2-VTUA-8-17
Instrument Approach Chart - ICAO - RNP RWY 22 (Tabular description)	AD 2-VTUA-8-18
Instrument Approach Chart - ICAO - RNP RWY 22 (Waypoint list table)	AD 2-VTUA-8-19

INTENTIONALLY BLANK

INTENTIONALLY BLANK

INSTRUMENT	AERODROME ELEV 599 ft	APP : 125.55	BURI RUM / Buri Rum
APPROACH	HEIGHT RELATED TO	TWR : 118.05, 236.6	NDB
CHART-ICAO	AERODROME ELEV	ATIS : 127.05	RWY 04



CHANGE: ATIS FREQUENCY.

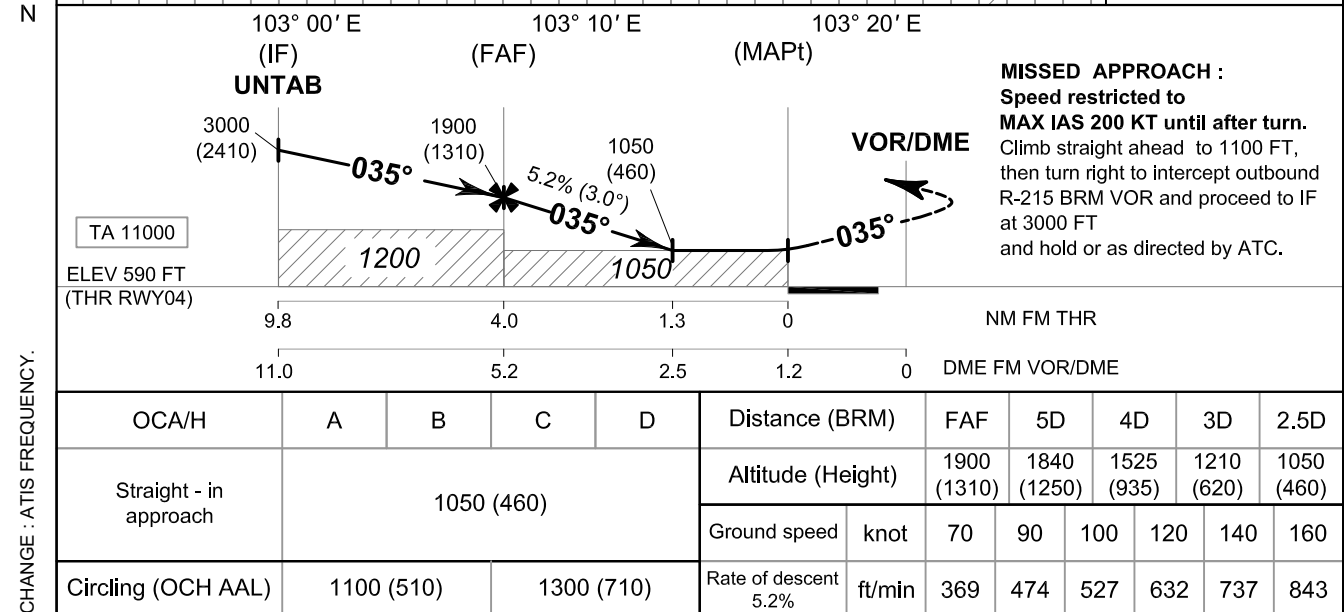
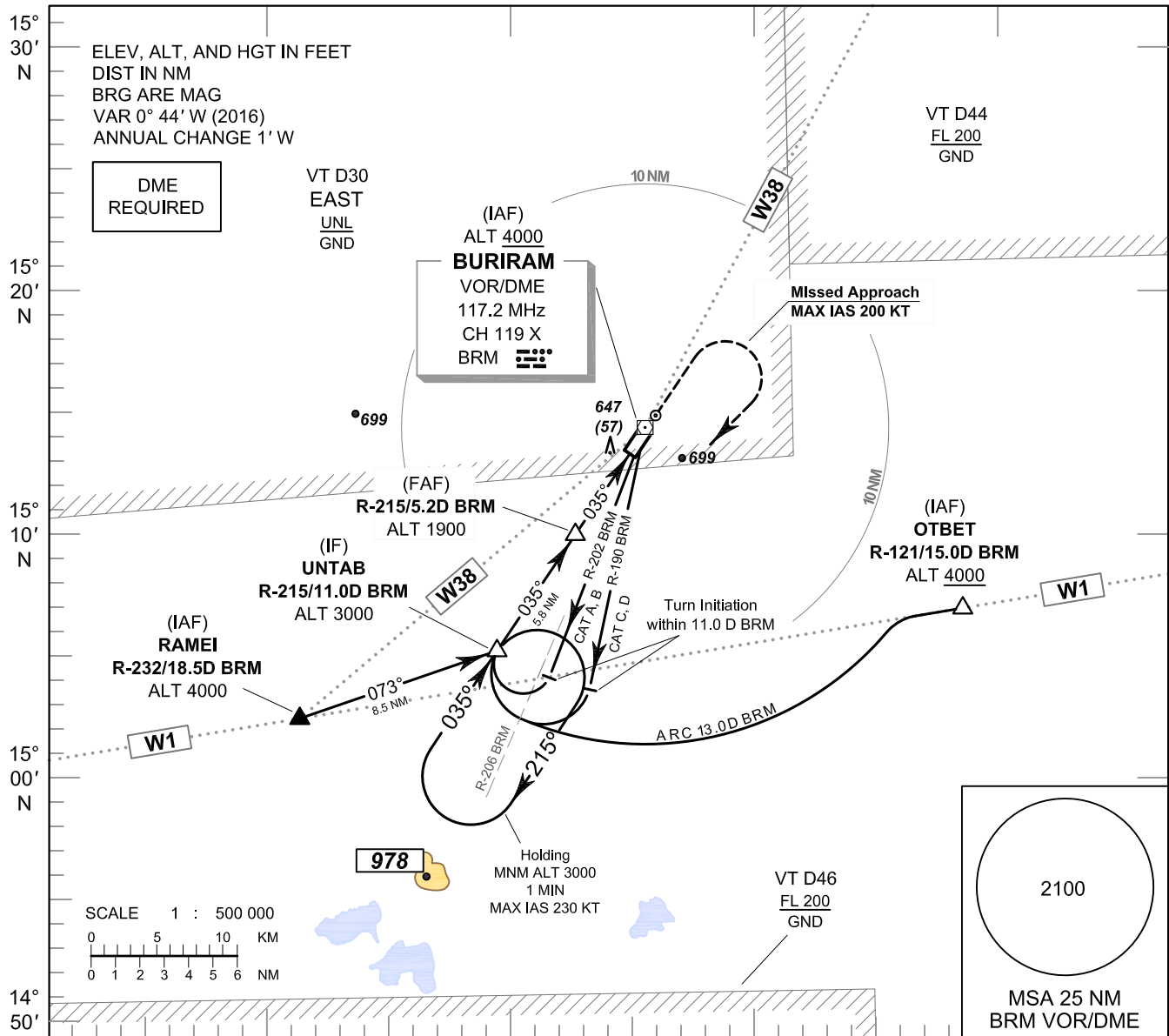
Cat of Aircraft	A	B	C	D
Straight-in Approach	999 (400)			
Circling	1009 (410)		1 300 (701)	

INTENTIONALLY BLANK

INSTRUMENT APPROACH CHART - ICAO **AERODROME ELEV 590 FT**
HEIGHTS RELATED TO THR RWY04 - ELEV 590 FT

APP : 125.55
TWR : 118.05, 236.6
ATIS : 127.05

BURI RAM / Buri ram (VTUO)
VOR RWY04



INSTRUMENT AERODROME ELEV 590 FT
APPROACH HEIGHTS RELATED TO
CHART - ICAO THR RWY04 - ELEV 590 FT

BURI RAM / Buri ram (VTUU)

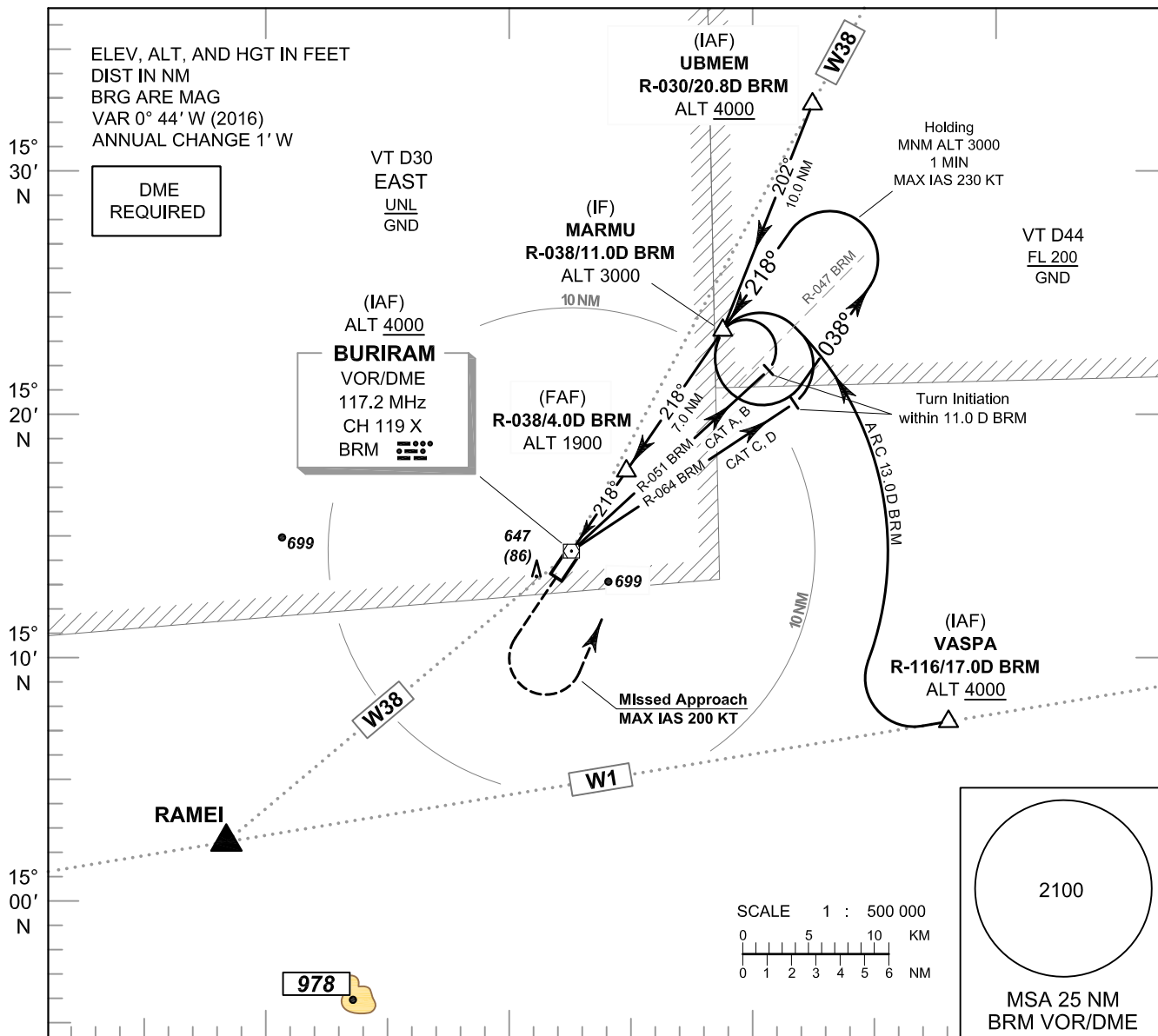
VOR RWY04

FIX/POINT		COORDINATES	
(IAF) VOR	BRM	15° 14' 22.43" N	103° 15' 31.59" E
(IAF) RAMEI	R-232 / 18.5 D BRM	15° 02' 40.15" N	103° 00' 40.02" E
(IAF) OTBET	R-121 / 15.0 D BRM	15° 06' 41.69" N	103° 28' 52.23" E
(IF) UNTAB	R-215 / 11.0 D BRM	15° 05' 17.27" N	103° 09' 03.46" E
(FAF)	R-215 / 5.2 D BRM	15° 10' 02.55" N	103° 12' 26.48" E
(MAPt)	R-215 / 1.2 D BRM	15° 13' 20.79" N	103° 14' 47.67" E

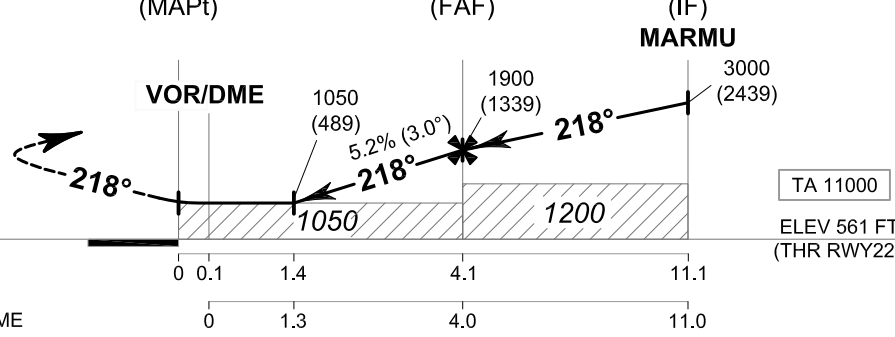
INSTRUMENT APPROACH CHART - ICAO **AERODROME ELEV 590 FT**
HEIGHTS RELATED TO THR RWY22 - ELEV 561 FT

APP : 125.55
TWR : 118.05, 236.6
ATIS : 127.05

BURI RAM / Buri ram (VTUU)
VOR RWY22



MISSED APPROACH :
Speed restricted to **MAX IAS 200 KT** until after turn.
Climb straight ahead to 1100 FT, then turn left to intercept outbound R-038 BRM VOR and proceed to IF at 3000 FT and hold or as directed by ATC.



CHANGE : ATIS FREQUENCY.

OCA/H	Distance (BRM)				Distance (BRM)	1.3D	2D	3D	FAF						
	A	B	C	D											
Straight - in approach	1050 (489)				1050 (489)	1275 (714)	1590 (1029)	1900 (1339)							
	Ground speed	knot				70	90	100	120	140	160				
Circling (OCH AAL)	1100 (510)		1300 (710)		Rate of descent 5.2%	ft/min				369	474	527	632	737	843

INSTRUMENT AERODROME ELEV 590 FT
APPROACH HEIGHTS RELATED TO
CHART - ICAO THR RWY22 - ELEV 561 FT

BURI RAM / Buri ram (VTUA)

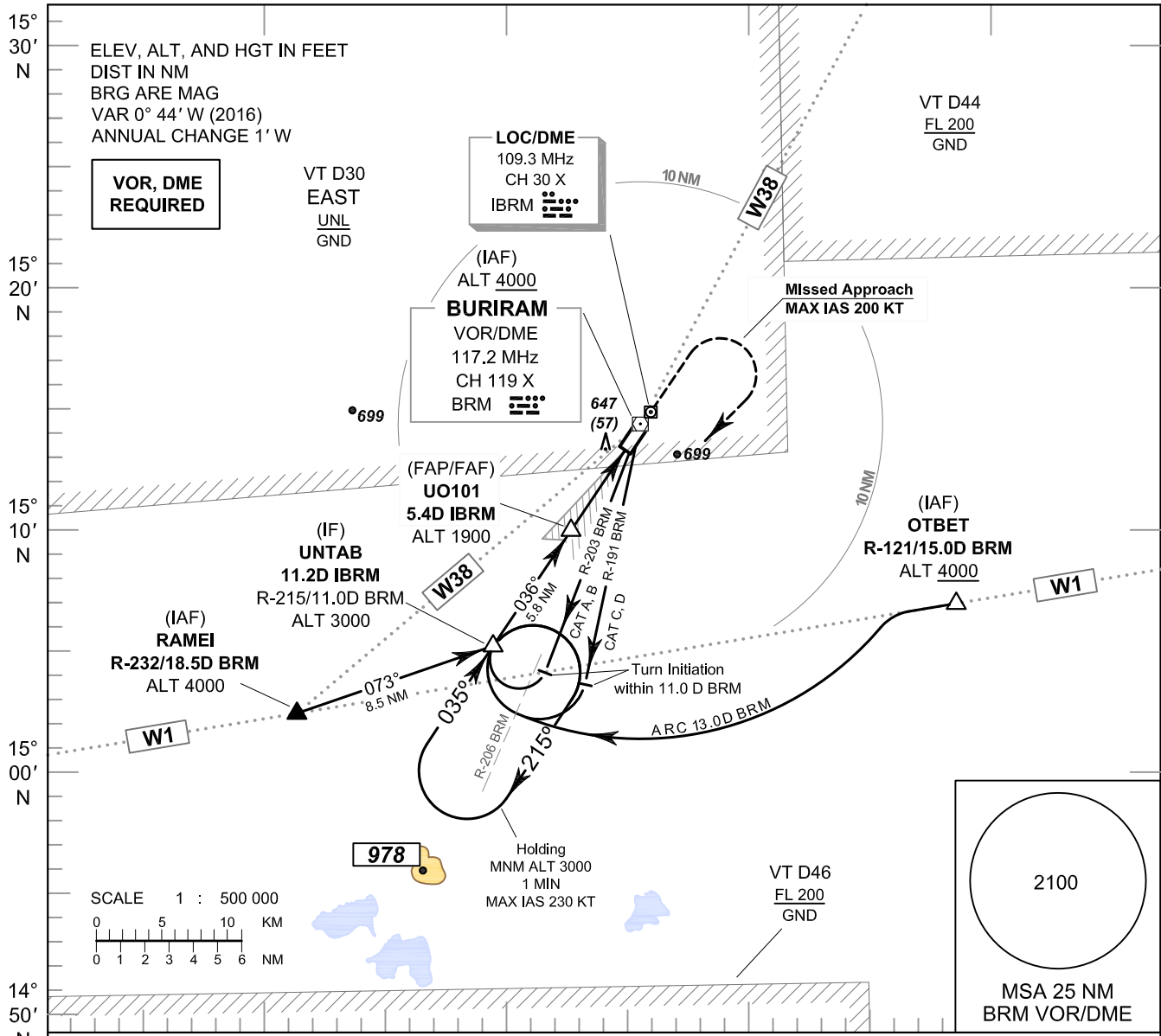
VOR RWY22

FIX/POINT		COORDINATES	
(IAF) VOR	BRM	15° 14' 22.43" N	103° 15' 31.59" E
(IAF) VASPA	R-116 / 17.0 D BRM	15° 07' 03.23" N	103° 31' 24.45" E
(IAF) UBMEM	R-030 / 20.8 D BRM	15° 32' 32.62" N	103° 26' 07.39" E
(IF) MARMU	R-038 / 11.0 D BRM	15° 23' 10.05" N	103° 22' 24.90" E
(FAF)	R-038 / 4.0 D BRM	15° 17' 34.32" N	103° 18' 01.82" E
(MAPt)	R-218 / 0.1 D BRM	15° 14' 17.63" N	103° 15' 27.84" E

INSTRUMENT APPROACH CHART - ICAO
AERODROME ELEV 590 FT
HEIGHTS RELATED TO THR RWY04 - ELEV 590 FT

APP : 125.55
TWR : 118.05, 236.6
ATIS : 127.05

BURI RAM / Buri ram (VTUU)
ILS or LOC y RWY04



		103° 00' E (IF) UNTAB	103° 10' E (FAP/FAF) UO101	MAPt (LOC only)									
		3000 (2410)	1900 (1310)	1050 (460)									
		036°		036°		036°							
		GP 3.0° (5.2%)											
		1200		1050									
		RDH 50 FT											
		TA 11000											
		ELEV 590 FT (THR RWY04)											
		9.8	4.0	1.3	0	NM FM THR							
		11.2	5.4	2.7	1.4	DME FM LOC/DME							
OCA/H		A	B	C	D	Distance (IBRM)							
Straight - in approach		CAT I	820 (230)	840 (250)		FAF	5D	4D	3D	2.7D			
						Altitude (Height)	1900 (1310)	1775 (1185)	1460 (870)	1145 (555)	1050 (460)		
LOC only		1050 (460)				Ground speed	knot	70	90	100	120	140	160
Circling (OCH AAL)		1100 (510)		1300 (710)		Rate of descent 5.2%	ft/min	369	474	527	632	737	843

CHANGE : ATIS FREQUENCY.

MISSED APPROACH :
Speed restricted to
MAX IAS 200 KT until after turn.
Climb straight ahead to 1100 FT,
then turn right to intercept outbound
R-215 BRM VOR and proceed to IF
at 3000 FT
and hold or as directed by ATC.

INSTRUMENT AERODROME ELEV 590 FT
APPROACH HEIGHTS RELATED TO
CHART - ICAO THR RWY04 - ELEV 590 FT

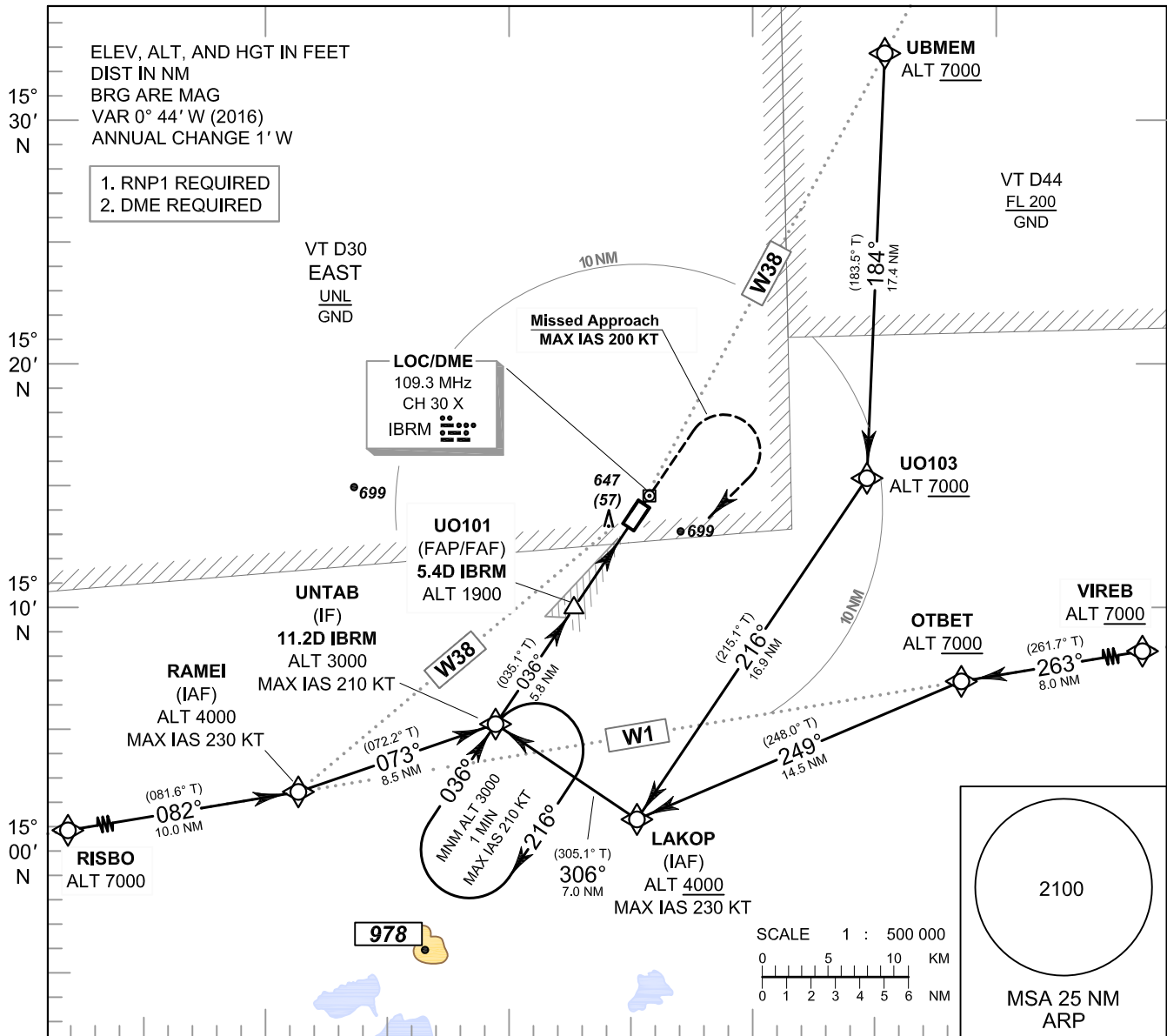
BURI RAM / Buri ram (VTUU)
ILS or LOC y RWY04

FIX/POINT		COORDINATES	
(IAF) VOR	BRM	15° 14' 22.43" N	103° 15' 31.59" E
(IAF) RAMEI	R-232 / 18.5 D BRM	15° 02' 40.15" N	103° 00' 40.02" E
(IAF) OTBET	R-121 / 15.0 D BRM	15° 06' 41.69" N	103° 28' 52.23" E
(IF) UNTAB	11.2 D IBRM	15° 05' 17.27" N	103° 09' 03.46" E
(FAP/FAF) UO101	5.4 D IBRM	15° 10' 01.26" N	103° 12' 28.77" E
MAPt (LOC only) THR RWY04	1.4 D IBRM	15° 13' 18.31" N	103° 14' 51.34" E

INSTRUMENT AERODROME ELEV 590 FT
APPROACH HEIGHTS RELATED TO
CHART - ICAO THR RWY04 - ELEV 590 FT

APP : 125.55
TWR : 118.05, 236.6
ATIS : 127.05

BURI RAM / Buri ram (VTUO)
ILS or LOC z RWY04



		103° 00' E	103° 10' E	103° 20' E									
		UNTAB (IF)	UO101 (FAP/FAF)	MAPt (LOC only)									
		3000 (2410)	1900 (1310)	1050 (460)									
		RDH 50 FT											
		TA 11000											
		ELEV 590 FT (THR RWY04)											
		9.8	4.0	1.3	0	NM FM THR							
		11.2	5.4	2.7	1.4	DME FM LOC/DME							
CHANGE : ATIS FREQUENCY	OCA/H	A	B	C	D	GS OUT	Distance (IBRM)	FAF	5D	4D	3D	2.7D	
	Straight - in approach	CAT I	820 (230)	840 (250)			Altitude (Height)	1900 (1310)	1775 (1185)	1460 (870)	1145 (555)	1050 (460)	
	LOC only	1050 (460)				Ground speed	knot	70	90	100	120	140	160
	Circling (OCH AAL)	1100 (510)	1300 (710)		Rate of descent	ft/min	369	474	527	632	737	843	

INSTRUMENT AERODROME ELEV 590 FT
APPROACH HEIGHTS RELATED TO
CHART - ICAO THR RWY04 - ELEV 590 FT

BURI RAM / Buri ram (VTUU)
ILS or LOC z RWY04

TABULAR DESCRIPTION

ILS or LOC z RWY04											
Serial Number	Path Descriptor	Waypoint Identifier	Flyover	Course ° M (° T)	Magnetic Variation	Distance (NM)	Turn Direction	Altitude (FT)	Speed (KT)	VPA/ RDH	Navigation Specification
010	IF	RISBO	-	-	+0.77	-	-	@7000	-	-	RNP 1
020	TF	RAMEI (IAF)	-	082°(081.6°)	+0.77	10.0	L	@4000	-230	-	RNP 1
030	TF	UNTAB (IF)	-	073°(072.2°)	+0.77	8.5	-	@3000	-210	-	RNP 1
010	IF	VIREB	-	-	+0.77	-	-	+7000	-	-	RNP 1
020	TF	OTBET	-	263°(261.7°)	+0.77	8.0	L	+7000	-	-	RNP 1
030	TF	LAKOP (IAF)	-	249°(248.0°)	+0.77	14.5	R	+4000	-230	-	RNP 1
040	TF	UNTAB (IF)	-	306°(305.1°)	+0.77	7.0	-	@3000	-210	-	RNP 1
010	IF	UBMEM	-	-	+0.77	-	-	+7000	-	-	RNP 1
020	TF	UO103	-	184°(183.5°)	+0.77	17.4	R	+7000	-	-	RNP 1
030	TF	LAKOP (IAF)	-	216°(215.1°)	+0.77	16.9	R	+4000	-230	-	RNP 1
040	TF	UNTAB (IF)	-	306°(305.1°)	+0.77	7.0	-	@3000	-210	-	RNP 1
010	IF	UNTAB (IF)	-	-	+0.77	-	-	@3000	-210	-	RNP 1
TRANSITION TO ILS or LOC											
020	TF	UO101 (FAF)	-	036°(035.1°)	+0.77	5.8	-	@1900	-	-	ILS
030	TF	UO102 (MAPt)	Y	036°(035.1°)	+0.77	4.0	-	@640	-	-3.0/50	ILS
040	CA	-	-	036°(035.1°)	+0.77	-	-	+1100	-200	-	RNP 1
050	DF	UNTAB (IF)	-	-	+0.77	-	R	+3000	-200	-	RNP 1
060	HM	UNTAB (IF)	Y	036°(035.1°)	+0.77	1 minute	R	+3000	-210	-	RNP 1

INSTRUMENT AERODROME ELEV 590 FT
APPROACH HEIGHTS RELATED TO
CHART - ICAO THR RWY04 - ELEV 590 FT

BURI RAM / Buri ram (VTUA)
ILS or LOC z RWY04

FIX/POINT		COORDINATES	
(IF) UNTAB	11.2 D IBRM	15° 05' 17.27" N	103° 09' 03.46" E
(FAP/FAF) UO101	5.4 D IBRM	15° 10' 01.26" N	103° 12' 28.77" E
MAPt (LOC only) THR RWY04	1.4 D IBRM	15° 13' 18.31" N	103° 14' 51.34" E
LOC/DME	IBRM	15° 14' 27.29" N	103° 15' 41.27" E

INSTRUMENT AERODROME ELEV 590 FT
APPROACH HEIGHTS RELATED TO
CHART - ICAO THR RWY04 - ELEV 590 FT

BURI RAM / Buri ram (VTUA)
ILS or LOC z RWY04

WAYPOINT LIST

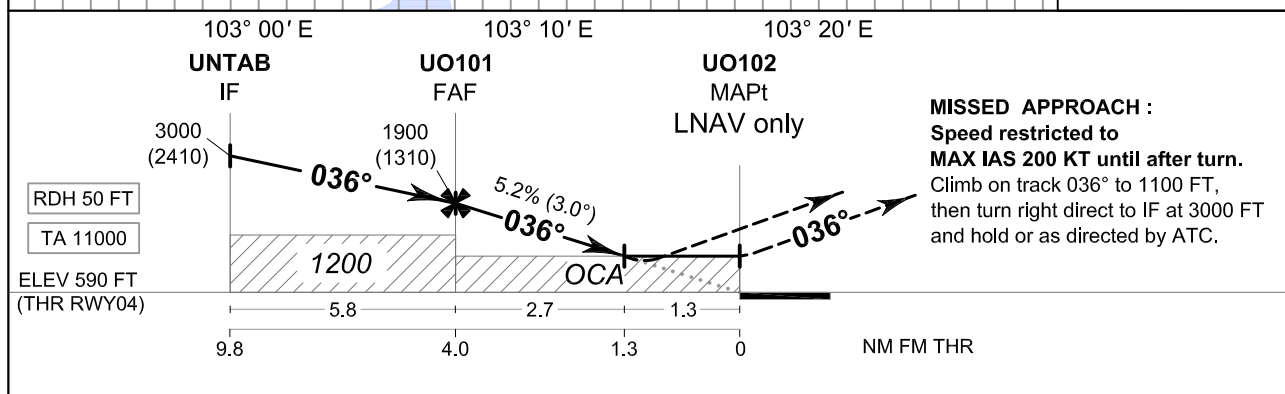
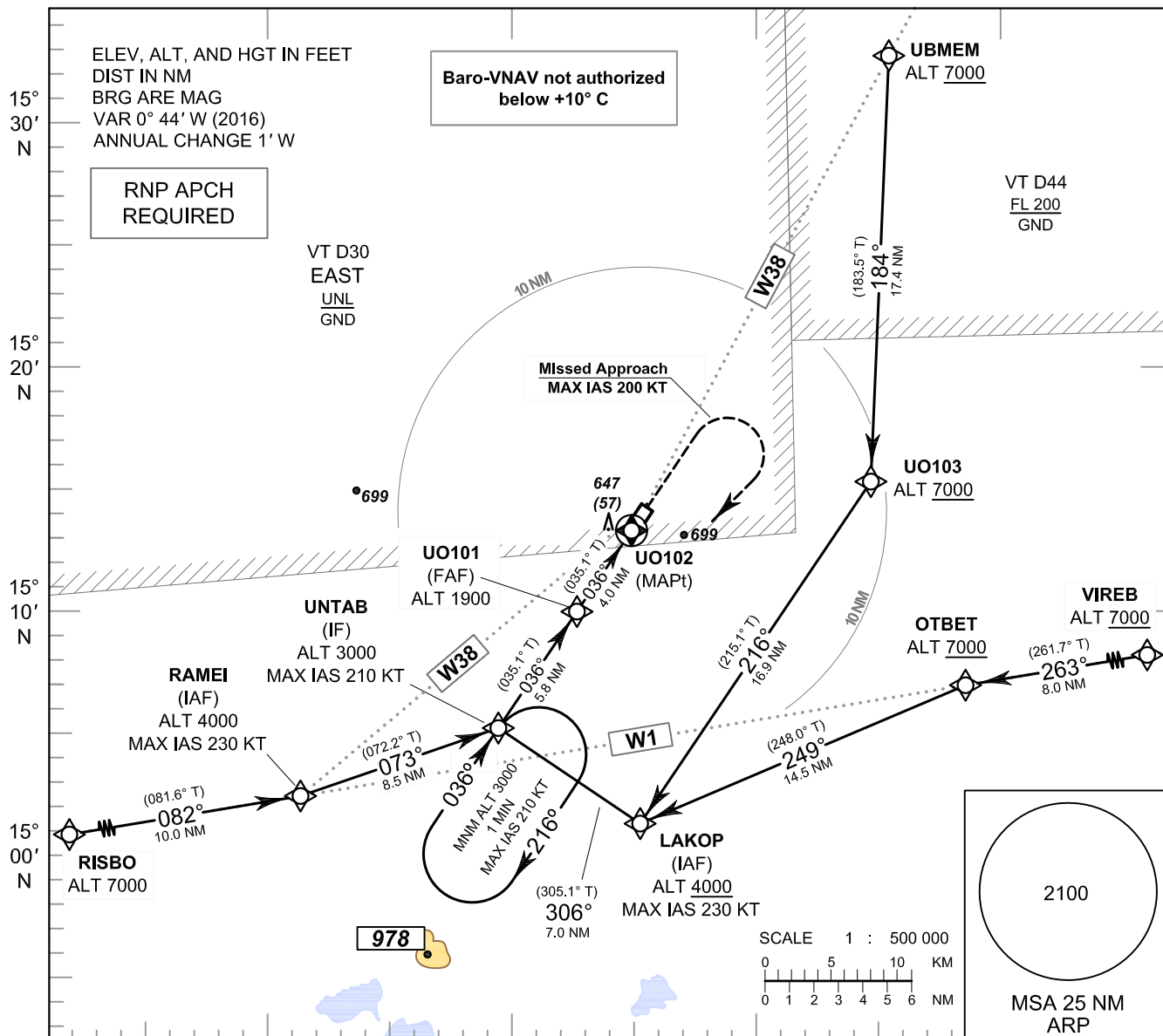
ILS or LOC z RWY04	
Waypoint Identifier	Coordinates
RISBO	15° 01' 11.70" N 102° 50' 26.73" E
RAMEI	15° 02' 40.15" N 103° 00' 40.02" E
VIREB	15° 07' 51.06" N 103° 37' 03.27" E
OTBET	15° 06' 41.69" N 103° 28' 52.23" E
UBMEM	15° 32' 32.62" N 103° 26' 07.39" E
UO103	15° 15' 07.45" N 103° 25' 01.52" E
LAKOP	15° 01' 14.86" N 103° 14' 58.67" E
UNTAB	15° 05' 17.27" N 103° 09' 03.46" E
UO101	15° 10' 01.26" N 103° 12' 28.77" E
UO102	15° 13' 18.31" N 103° 14' 51.34" E

INSTRUMENT APPROACH CHART - ICAO
AERODROME ELEV 590 FT
HEIGHTS RELATED TO THR RWY04 - ELEV 590 FT

APP : 125.55
 TWR : 118.05, 236.6
 ATIS : 127.05

BURI RAM / Buri ram (VTUO)

RNP RWY04



OCA/H	A	B	C	D	NM to NEXT WPT	FAF	3NM	2NM	1.3NM				
LNAV/VNAV	900 (310)				Altitude (Height)	1900 (1310)	1590 (1000)	1270 (680)	1050 (460)				
LNAV	1050 (460)				Ground speed	knot	70	90	100	120	140	160	
Circling (OCH AAL)	1100 (510)		1300 (710)		Rate of descent	5.2%	ft/min	369	474	527	632	737	843

CHANGE : ATIS FREQUENCY.

INSTRUMENT AERODROME ELEV 590 FT
APPROACH HEIGHTS RELATED TO
CHART - ICAO THR RWY04 - ELEV 590 FT

BURI RAM / Buri ram (VTUA)
RNP RWY04

TABULAR DESCRIPTION

RNP RWY04											
Serial Number	Path Descriptor	Waypoint Identifier	Flyover	Course ° M (° T)	Magnetic Variation	Distance (NM)	Turn Direction	Altitude (FT)	Speed (KT)	VPA/TCH	Navigation Specification
010	IF	RISBO	-	-	+0.77	-	-	@7000	-	-	RNP APCH
020	TF	RAMEI (IAF)	-	082°(081.6°)	+0.77	10.0	L	@4000	-230	-	RNP APCH
030	TF	UNTAB (IF)	-	073°(072.2°)	+0.77	8.5	-	@3000	-210	-	RNP APCH
010	IF	VIREB	-	-	+0.77	-	-	+7000	-	-	RNP APCH
020	TF	OTBET	-	263°(261.7°)	+0.77	8.0	L	+7000	-	-	RNP APCH
030	TF	LAKOP (IAF)	-	249°(248.0°)	+0.77	14.5	R	+4000	-230	-	RNP APCH
040	TF	UNTAB (IF)	-	306°(305.1°)	+0.77	7.0	-	@3000	-210	-	RNP APCH
010	IF	UBMEM	-	-	+0.77	-	-	+7000	-	-	RNP APCH
020	TF	UO103	-	184°(183.5°)	+0.77	17.4	R	+7000	-	-	RNP APCH
030	TF	LAKOP (IAF)	-	216°(215.1°)	+0.77	16.9	R	+4000	-230	-	RNP APCH
040	TF	UNTAB (IF)	-	306°(305.1°)	+0.77	7.0	-	@3000	-210	-	RNP APCH
010	IF	UNTAB (IF)	-	-	+0.77	-	-	@3000	-210	-	RNP APCH
020	TF	UO101 (FAF)	-	036°(035.1°)	+0.77	5.8	-	@1900	-	-	RNP APCH
030	TF	UO102 (MAPt)	Y	036°(035.1°)	+0.77	4.0	-	@640	-	-3.0/50	RNP APCH
040	CA	-	-	036°(035.1°)	+0.77	-	-	+1100	-200	-	RNP APCH
050	DF	UNTAB (IF)	-	-	+0.77	-	R	+3000	-200	-	RNP APCH
060	HM	UNTAB (IF)	Y	036°(035.1°)	+0.77	1 minute	R	+3000	-210	-	RNP APCH

CHANGE: CHART TITLE.

INSTRUMENT AERODROME ELEV 590 FT
APPROACH HEIGHTS RELATED TO
CHART - ICAO THR RWY04 - ELEV 590 FT

BURI RAM / Buri ram (VTUA)
RNP RWY04

WAYPOINT LIST

RNP RWY04	
Waypoint Identifier	Coordinates
RISBO	15° 01' 11.70" N 102° 50' 26.73" E
RAMEI	15° 02' 40.15" N 103° 00' 40.02" E
VIREB	15° 07' 51.06" N 103° 37' 03.27" E
OTBET	15° 06' 41.69" N 103° 28' 52.23" E
UBMEM	15° 32' 32.62" N 103° 26' 07.39" E
UO103	15° 15' 07.45" N 103° 25' 01.52" E
LAKOP	15° 01' 14.86" N 103° 14' 58.67" E
UNTAB	15° 05' 17.27" N 103° 09' 03.46" E
UO101	15° 10' 01.26" N 103° 12' 28.77" E
UO102	15° 13' 18.31" N 103° 14' 51.34" E

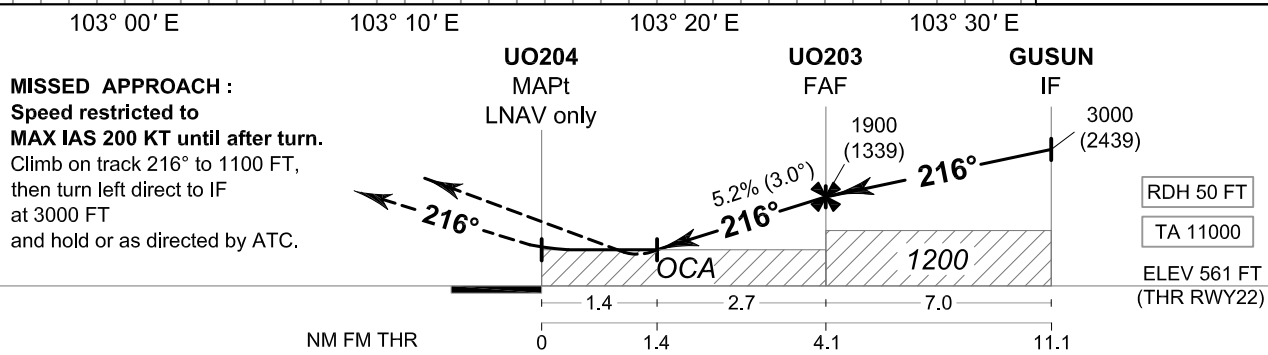
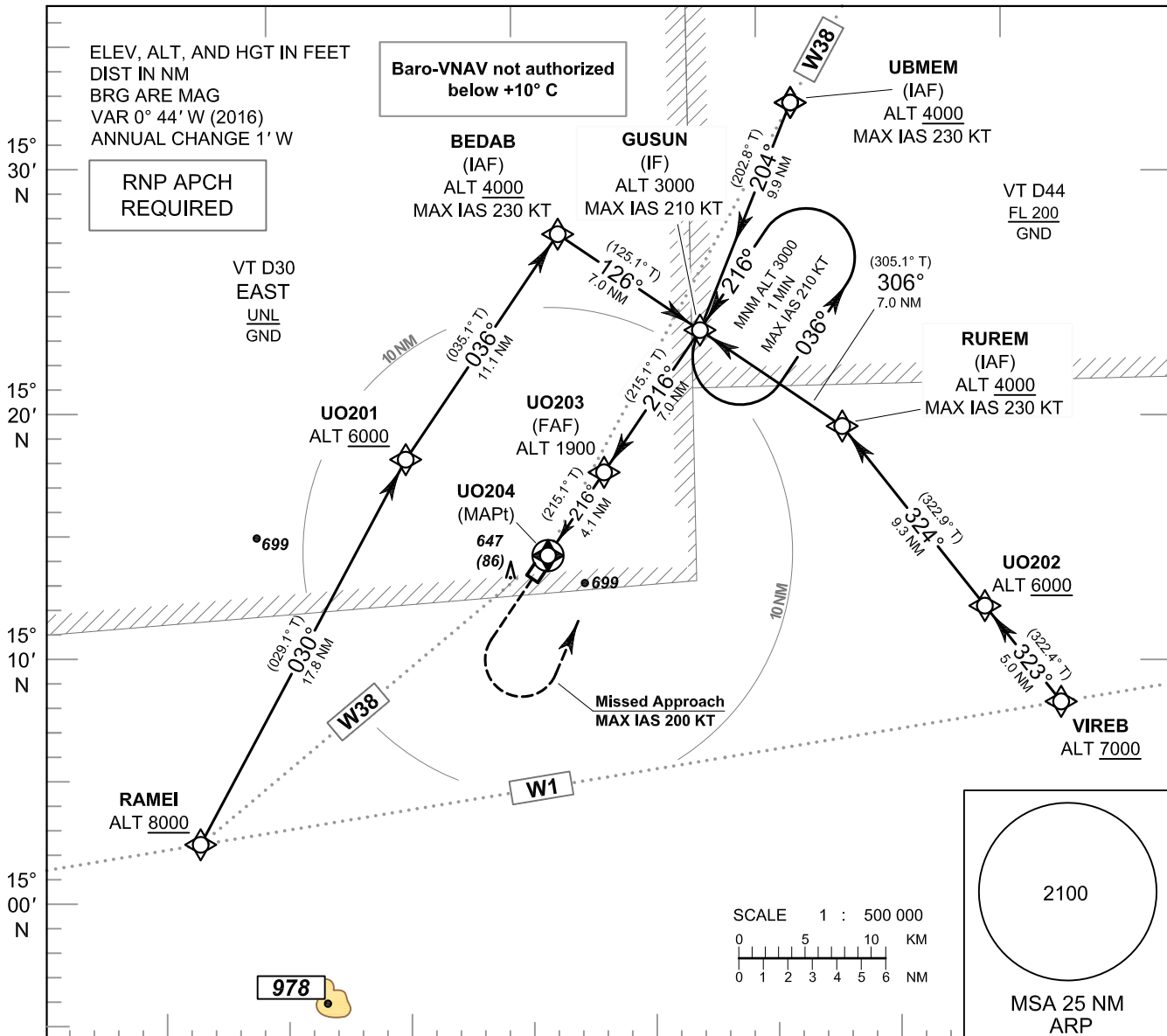
CHANGE: CHART TITLE.

INTENTIONALLY BLANK

INSTRUMENT APPROACH CHART - ICAO **AERODROME ELEV 590 FT**
HEIGHTS RELATED TO
THR RWY22 - ELEV 561 FT

APP : 125.55
TWR : 118.05, 236.6
ATIS : 127.05

BURI RAM / Buri ram (VTUU)
RNP RWY22



CHANGE : ATIS FREQUENCY.

OCA/H	A	B	C	D	NM to NEXT WPT	1.4 NM	2 NM	3 NM	FAF				
LNAV/VNAV	850 (289)				Altitude (Height)	1050 (489)	1245 (684)	1560 (999)	1900 (1339)				
LNAV	1050 (489)				Ground speed	knot	70	90	100	120	140	160	
Circling (OCH AAL)	1100 (510)		1300 (710)		Rate of descent	5.2%	ft/min	369	474	527	632	737	843

INSTRUMENT AERODROME ELEV 590 FT
APPROACH HEIGHTS RELATED TO
CHART - ICAO THR RWY22 - ELEV 561 FT

BURI RAM / Buri ram (VTUA)
RNP RWY22

TABULAR DESCRIPTION

RNP RWY22											
Serial Number	Path Descriptor	Waypoint Identifier	Flyover	Course ° M (° T)	Magnetic Variation	Distance (NM)	Turn Direction	Altitude (FT)	Speed (KT)	VPA/TCH	Navigation Specification
010	IF	UBMEM (IAF)	-	-	+0.77	-	-	+4000	-230	-	RNP APCH
020	TF	GUSUN (IF)	-	204°(202.8°)	+0.77	9.9	-	@3000	-210	-	RNP APCH
010	IF	RAMEI	-	-	+0.77	-	-	+8000	-	-	RNP APCH
020	TF	UO201	-	030°(029.1°)	+0.77	17.8	R	+6000	-	-	RNP APCH
030	TF	BEDAB (IAF)	-	036°(035.1°)	+0.77	11.1	R	+4000	-230	-	RNP APCH
040	TF	GUSUN (IF)	-	126°(125.1°)	+0.77	7.0	-	@3000	-210	-	RNP APCH
010	IF	VIREB	-	-	+0.77	-	-	+7000	-	-	RNP APCH
020	TF	UO202	-	323°(322.4°)	+0.77	5.0	R	+6000	-	-	RNP APCH
030	TF	RUREM (IAF)	-	324°(322.9°)	+0.77	9.3	L	+4000	-230	-	RNP APCH
040	TF	GUSUN (IF)	-	306°(305.1°)	+0.77	7.0	-	@3000	-210	-	RNP APCH
010	IF	GUSUN (IF)	-	-	+0.77	-	-	@3000	-210	-	RNP APCH
020	TF	UO203 (FAF)	-	216°(215.1°)	+0.77	7.0	-	@1900	-	-	RNP APCH
030	TF	UO204 (MAPt)	Y	216°(215.1°)	+0.77	4.1	-	@611	-	-3.0/50	RNP APCH
040	CA	-	-	216°(215.1°)	+0.77	-	-	+1100	-200	-	RNP APCH
050	DF	GUSUN (IF)	-	-	+0.77	-	L	+3000	-200	-	RNP APCH
060	HM	GUSUN (IF)	Y	216°(215.1°)	+0.77	1 minute	L	+3000	-210	-	RNP APCH

CHANGE: CHART TITLE.

INSTRUMENT AERODROME ELEV 590 FT
APPROACH HEIGHTS RELATED TO
CHART - ICAO THR RWY22 - ELEV 561 FT

BURI RAM / Buri ram (VTUA)
RNP RWY22

WAYPOINT LIST

RNP RWY22	
Waypoint Identifier	Coordinates
UBMEM	15° 32' 32.62" N 103° 26' 07.39" E
RAMEI	15° 02' 40.15" N 103° 00' 40.02" E
UO201	15° 18' 16.76" N 103° 09' 36.36" E
BEDAB	15° 27' 24.34" N 103° 16' 12.84" E
VIREB	15° 07' 51.06" N 103° 37' 03.27" E
UO202	15° 11' 50.96" N 103° 33' 53.10" E
RUREM	15° 19' 19.03" N 103° 28' 04.00" E
GUSUN	15° 23' 21.76" N 103° 22' 08.54" E
UO203	15° 17' 36.46" N 103° 17' 58.27" E
UO204	15° 14' 14.36" N 103° 15' 31.92" E

CHANGE: CHART TITLE.

INTENTIONALLY BLANK