

VTCT AD 2.1 AERODROME LOCATION INDICATOR AND NAME

VTCT - CHIANG RAI / Mae Fah Luang-CHIANG RAI INTERNATIONAL AIRPORT

VTCT AD 2.2 AERODROME GEOGRAPHICAL AND ADMINISTRATIVE DATA

1	ARP coordinates and site at AD	195708N 0995259E Centre Line of RWY, 1500 M from THR RWY21
2	Direction and distance from (city)	9 KM, NE from city
3	Elevation/Reference temperature	390.23 M (1280 FT) / 35°C
4	Geoid Undulation at AD ELEV PSN	NIL
5	MAG VAR/Annual change	0°51'W (2016)/ 0°0'E
6	AD Administration, address, telephone, telefax, telex, AFS	Director of Mae Fah Luang-Chiang Rai International Airport Mae Fah Luang-Chiang Rai International Airport 404 Chiang Rai-Maechan Road Rimkok-Baan Doo Sub-District Amphoe Mueang Chiang Rai 57100 Thailand Tel: +665 379 8000 +665 379 8999 Fax: +665 379 8049 AFS: VTCTYDYX
7	Types of traffic permitted (IFR/VFR)	IFR/VFR
8	Remarks	Operator: Airports of Thailand Public Company Limited (AOT)

VTCT AD 2.3 OPERATIONAL HOURS

1	Aerodrome Operator	H24
2	Customs and immigration	Customs: 0130-0930 or available on request Immigration: Available with AD hours
3	Health and sanitation	Available on request
4	AIS Briefing Office	2300-1400
5	ATS Reporting Office (ARO)	NIL
6	MET Briefing Office	H24
7	ATS	2300 – 1430, Other than this period 1 HR PN to ATC
8	Fuelling	H24
9	Handling	Available with AD hours
10	Security	H24
11	De-icing	NIL
12	Remarks	NIL

VTCT AD 2.4 HANDLING SERVICES AND FACILITIES

1	Cargo-handling facilities	2 High lifts. Handling weights up to 8 T per day. Provided by Thai Airways International Public Co.,Ltd Tel: +665 379 8200 +665 379 8201 Fax: +665 379 3059 +665 379 3060 1 Hand lift. Handling weights up to 4 T per day. Provided by Bags Ground Services Co.,Ltd Tel: +665 202 9856
2	Fuel/oil types	JET A-1
3	Fuelling facilities/capacity	1 Jet A-1 Refueller @ 12,000 L
4	De-icing facilities	NIL
5	Hangar space for visiting aircraft	Not available
6	Repair facilities for visiting aircraft	Not available
7	Remarks	NIL

VTCT AD 2.5 PASSENGER FACILITIES

1	Hotels	In the city
2	Restaurants	Available at the AD and in the city
3	Transportation	Taxi limousine, Taxi meter, Car rental service and public bus
4	Medical facilities	First aid at AD and hospitals in the city
5	Bank and Post Office	In the city / At AD Bank open: 0200-1300 Post Office open: 0130-1400
6	Tourist Office	In the city
7	Remarks	NIL

VTCT AD 2.6 RESCUE AND FIRE FIGHTING SERVICES

1	AD category for fire fighting	Category 9
2	Rescue equipment	Adequately provided as recommended by ICAO
3	Capability for removal of disabled aircraft	NIL
4	Remarks	NIL

VTCT AD 2.7 SEASONAL AVAILABILITY - CLEARING

1	Types of clearing equipment	NIL
2	Clearance priorities	NIL
3	Remarks	The aerodrome is available all seasons.

VTCT AD 2.8 APRONS, TAXIWAYS AND CHECK LOCATIONS/POSITIONS DATA

1	Apron surface and strength	Apron Aircraft Stand NR 1-4 Surface: Concrete Strength: PCN 73/R/D/X/T Apron Aircraft Stand NR 5-7 Surface: Concrete Strength: PCN 73/R/C/X/T
2	Taxiway width, surface and strength	Width: 23 M Surface: Concrete and asphalt Strength: PCN 84/F/D/X/T
3	Altimeter checkpoint location and elevation	Location: At Apron Elevation: 388.55 M (1274 FT)
4	VOR checkpoints	NIL
5	INS checkpoints	NIL
6	Remarks	Aircraft stand NR 6-7 are allowed to be used from sunrise to sunset only.

VTCT AD 2.9 SURFACE MOVEMENT GUIDANCE AND CONTROL SYSTEM AND MARKINGS

1	Use of aircraft stand ID signs, TWY guide lines and visual docking/parking guidance system of aircraft stands	Taxiway centre line are painted in yellow and illuminated guidance signs are provided at various intersections. TWY edge and TWY holding position are provided. Nose-Wheel guide lines at apron. Solid Nose-Wheel guide lines at aircraft stands. Visual Docking Guidance System at aircraft stand number 3 and 4 are serviceable.
2	RWY and TWY markings and LGT	RWY marking: RWY Designation, THR, TDZ, Centre line, Aiming Point and Side Strip RWY LGT: THR, RWY EDGE and RWY End lights TWY marking: Centre line, Edge and RWY Holding Position TWY LGT: TWY EDGE lights
3	Stop bars	NIL
4	Remarks	See AIP Page AD 2-VTCT-2-2

VTCT AD 2.10 AERODROME OBSTACLES

In approach/TKOF areas			In circling areas and at AD		Remarks
1			2		
RWY/Area affected	Obstacle type Elevation Markings/LGT	Coordinates	Obstacle type Elevation Markings/LGT	Coordinates	
a	b	c	a	b	
NIL	NIL	NIL	NIL	NIL	NIL

VTCT AD 2.11 METEOROLOGICAL INFORMATION PROVIDED

1	Associated MET Office	Aeronautical Meteorological Station - Chiang Rai, Northern Meteorological Center, Thai Meteorological Department (TMD)
2	Hours of service MET Office outside hours	H24 NIL
3	Office responsible for TAF preparation Periods of validity	Supply TAF from Northern Meteorological Center 30 HR
4	Type of landing forecast Interval of issuance	TREND 1 HR
5	Briefing/consultation provided	Personal Consultation Tel: +665 379 3062-3, +665 379 3698-9 Fax: +665 379 3061
6	Flight documentation Language(s) used	NIL
7	Charts and other information available for briefing or consultation	S, U85, Daily Weather Forecast, satellite and radar images
8	Supplementary equipment available for providing information	Automated Weather Observation System (AWOS), Low Level Wind Shear Alert System (LLWAS) and Weather Radar
9	ATS units provided with information	Chiang Rai TWR
10	Additional information (limitation of service, etc.)	NIL

VTCT AD 2.12 RUNWAY PHYSICAL CHARACTERISTICS

Designations RWY NR	TRUE BRG	Dimensions of RWY(M)	Strength (PCN) and surface of RWY and SWY	THR coordinates RWY end coordinates THR geoid undulation	THR elevation and highest elevation of TDZ of precision APP RWY
1	2	3	4	5	6
03	030°	3000x45	PCN 84/F/D/X/T Asphalt	195625.75N 0995233.51E	390.23 M (1280 FT AMSL)
21	210°	3000x45	PCN 84/F/D/X/T Asphalt	195751.10N 0995323.57E	388.77 M (1275 FT AMSL)

Slope of RWY-SWY	SWY dimensions (M)	CWY dimensions (M)	Strip dimensions (M)	OFZ	Remarks
7	8	9	10	11	12
-0.05%	60x60	NIL	3240x300	NIL	NIL
0.05%	60x60	NIL	3240x300	NIL	NIL

VTCT AD 2.13 DECLARED DISTANCES

RWY Designator	TORA (M)	TODA (M)	ASDA (M)	LDA (M)	Remarks
1	2	3	4	5	6
03	3000	3000	3060	3000	NIL
21	3000	3000	3060	3000	NIL

VTCT AD 2.14 APPROACH AND RUNWAY LIGHTING

RWY Designator	APCH LGT type LEN INTST	THR LGT colour WBAR	VASIS (MEHT) PAPI	TDZ, LGT LEN	RWY Centre Line LGT Length, spacing, colour, INTST	RWY edge LGT LEN, spacing, colour INTST	RWY End LGT colour WBAR	SWY LGT LEN (M) colour	Remarks
1	2	3	4	5	6	7	8	9	10
03	CAT1 900 M LIH	Green	PAPI BOTH 3° (65.16 FT)	NIL	NIL	3000 M 60 M White LIH	Red	Red	NIL
21	SALS 420 M LIH	Green	PAPI BOTH 3° (60.66 FT)	NIL	NIL	3000 M 60 M White LIH	Red	Red	NIL

VTCT AD 2.15 OTHER LIGHTING, SECONDARY POWER SUPPLY

1	ABN/IBN location, characteristics and hours of operation	ABN: At Tower Building, FLG WG EV 3 SEC
2	LDI location and LGT Anemometer location and LGT	2WDIs at 300 M from THR 03 offset to the left side 120 M from RWY centre line, at 450 M from THR 21 offset to the left side 105 M from RWY centre line. All are illuminated.
3	TWY edge and centre line lighting	EDGE: All TWY
4	Secondary power supply/switch-over time	Secondary power supply to all lighting at AD. Switch-over time 12 SEC.
5	Remarks	NIL

VTCT AD 2.16 HELICOPTER LANDING AREA

1	Coordinates TLOF or THR of FATO Geoid undulation	NIL
2	TLOF and/or FATO elevation M/FT	NIL
3	TLOF and FATO area dimensions, surface, strength, marking	NIL
4	True and MAG BRG of FATO	NIL
5	Declared distance available	NIL
6	APP and FATO lighting	NIL
7	Remarks	NIL

VTCT AD 2.17 ATS AIRSPACE

1	Designation and lateral limits	A circle of 5 NM radius centred on CTR DVOR/DME (195653.65N 0995300.12E)
2	Vertical limits	2000 FT/AGL
3	Airspace classification	C
4	ATS unit call sign Language(s)	Chiang Rai Tower English, Thai
5	Transition altitude	11000 FT
6	Remarks	NIL

VTCT AD 2.18 ATS COMMUNICATION FACILITIES

Service designation	Call sign	Frequency	Hours of operation	Remarks
1	2	3	4	5
APP	Chiang Rai Approach	120.05 MHZ 257.8 MHZ	23:00-14:30	1) Emergency frequency
TWR	Chiang Rai Tower	118.4 MHZ 236.6 MHZ 121.5 MHZ 1)	23:00-14:30	
ATIS	Chiang Rai Intl Airport	127.85 MHZ	23:00-14:30	

VTCT AD 2.19 RADIO NAVIGATION AND LANDING AIDS

Type of aid, MAG VAR, CAT of ILS/MLS (For VOR/ILS/MLS, give declination)	ID	Frequency	Hours of operation	Position of transmitting antenna coordinates	Elevation of DME transmitting antenna	Remarks
1	2	3	4	5	6	7
NDB	CT	277 KHZ	H24	195735.1N 0995259.1E		The coverage clockwise orbit data refer to commissioning due to mountainous terrain and border limit as follows: 1. 25 NM – Bearing 001°-140° at altitude 5 500 FT – Bearing 281°-360° at altitude 7 500 FT 2. 40 NM – Bearing 141°-180° at altitude 6 000 FT – Bearing 181°-280° at altitude 7 500 FT
DVOR/DME	CTR	116.5 MHZ CH 112X	H24	195653.65N 0995300.12E		DVOR/DME restriction due to mountainous terrain surround DVOR/DME station, coverage check does not provide adequate signal at the required altitude in various areas as follows: 1. 40 NM – Radial 141°-180° altitude should not below 5 000 FT – Radial 181°-210° altitude should not below 7 500 FT – Radial 211°-255° altitude should not below 9 000 FT – Radial 256°-265° altitude should not below 10 000 FT – Radial 266°-270° altitude should not below 9 000 FT 2. 20 NM (Due to border limited) – Radial 271°-340° altitude should not below 6 500 FT – Radial 341°-140° altitude should not below 5 000 FT

Type of aid, MAG VAR CAT of ILS/MLS (For VOR/ILS/ MLS, give declination)	ID	Frequency	Hours of operation	Position of transmitting antenna coordinates	Elevation of DME transmittin g antenna	Remarks
1	2	3	4	5	6	7
ILS CAT I LOC/ DME RWY03	ICTR	109.5 MHZ CH 32X	H24	195759.50N 0995328.50E		a) Instrument Landing System (ILS) coverage over a sector of 35 either side of the runway centre line, no back course. The antenna array is located on the extended runway centre line at the distance of 300 M from the threshold of RWY 21, height of the array is 2 M b) Glide Path 3°. c) Middle marker distance 1 150 M from approached of RWY 03. d) DME co - located with localizer, power output 100 watts omnidirectional.
GP		332.6 MHZ	H24	195632.60N 0995242.60E		
MM		75 MHZ	H24	195552.9N 0995214.0E		

VTCT AD 2.20 LOCAL AERODROME REGULATIONS**1. 180 DEGREES TURN ON THE RUNWAY**

To prevent runway pavement damage which may result in the closure of the aerodrome if such damage is severe, aircraft code letter C or higher shall make a 180 degrees turn at the runway turn pads located on both end of runway. Any breach done by the aircraft operator shall be recorded and reported to the The Civil Aviation Authority Of Thailand/ the Headquarters of that operator and shall be liable for the compensation caused by such violation.

2. APRON MANAGEMENT

- 2.1 In case of B737-800 parked at aircraft stand NR 2, aircrafts code E are not allowed to taxi behind this stand.
- 2.2 In case of B747-400 parked at aircraft stand NR 2, aircrafts code C,D,E are not allowed to taxi behind this stand.
- 2.3 In case of A300-600 parked at aircraft stand NR 2, aircrafts code D with wing span exceed 45 M. and code E are not allowed to taxi behind this stand.
- 2.4 In case of B747-400 parked at aircraft stand NR 3, aircrafts code C with wing span exceed 30 M. and code D, E are not allowed to taxi behind this stand.
- 2.5 In case of B777-300 parked at aircraft stand NR 3, aircrafts code C, D, E are not allowed to taxi behind this stand.
- 2.6 Aircraft stand NR 6 and NR 7 are allowed to be used from sunrise to sunset only.

3. OPERATION OF ALL NON-SCHEDULED FLIGHT AT MAE FAH LUANG-CHIANG RAI INTERNATIONAL AIRPORT

- 3.1 All aircraft wishing to operate at Mae Fah Luang-Chiang Rai International Airport shall adhere to the following procedures;
- 3.1.1 All flights, including flight selecting Mae Fah Luang-Chiang Rai International Airport as an alternate aerodrome, shall have handling agent at Mae Fah Luang-Chiang Rai International Airport.
- 3.1.2 Nose-in parking is applicable to all aircraft.
- 3.1.3 All aircraft ready to taxi out shall prepare their own tow bars.

VTCT AD 2.21 NOISE ABATEMENT PROCEDURES

Between 1500-2259 UTC, departing aircraft shall use runway 03 avoid the residential area, unless it would affect the safety of flight.

VTCT AD 2.22 FLIGHT PROCEDURES

NIL

VTCT AD 2.23 ADDITIONAL INFORMATION

1. AERODROME CONFUSION

Aircraft landing at Mae Fah Luang-Chiang Rai International Airport (VTCT) shall be aware of another operative aerodrome, Rob Wiang Airport (VTCR) located 5 miles southeast of Mae Fah Luang-Chiang Rai International Airport (radial 218 from CTR VOR).

VTCT AD 2.24 CHARTS RELATED TO AN AERODROME

Chart name	Page
Aerodrome chart - ICAO	AD 2-VTCT-2-1
Aircraft Parking/Docking Chart - ICAO	AD 2-VTCT-2-3
Aerodrome Ground Movement Chart - ICAO	AD 2-VTCT-2-5
Aerodrome Obstacle Chart - ICAO Type A - RWY 03/21	AD 2-VTCT-3-1
Standard Instrument Departure Chart - RWY 03	AD 2-VTCT-6-1
Standard Instrument Departure Chart - RWY 21	AD 2-VTCT-6-3
Standard Departure Chart - Instrument (SID) - ICAO - RNAV RWY 03 - BENVI1A DUBEN1A NUMDO1A PONUK1A	AD 2-VTCT-6-4
Standard Departure Chart - Instrument (SID) - ICAO - RNAV RWY 03 - BENVI1A DUBEN1A NUMDO1A PONUK1A (Tabular description)	AD 2-VTCT-6-5
Standard Departure Chart - Instrument (SID) - ICAO - RNAV RWY 21 - BENVI1B DUBEN1B NUMDO1B PONUK1B	AD 2-VTCT-6-6
Standard Departure Chart - Instrument (SID) - ICAO - RNAV RWY 21 - BENVI1B DUBEN1B NUMDO1B PONUK1B (Tabular description)	AD 2-VTCT-6-7
Instrument Approach Chart - ICAO - NDB/DME RWY 03	AD 2-VTCT-8-1
Instrument Approach Chart - ICAO - VOR RWY 03	AD 2-VTCT-8-3
Instrument Approach Chart - ICAO - VOR RWY 03 (Fix and point list table)	AD 2-VTCT-8-4
Instrument Approach Chart - ICAO - VOR RWY 21	AD 2-VTCT-8-5
Instrument Approach Chart - ICAO - VOR RWY 21 (Fix and point list table)	AD 2-VTCT-8-6
Instrument Approach Chart - ICAO - ILS or LOC y RWY 03	AD 2-VTCT-8-7
Instrument Approach Chart - ICAO - ILS or LOC y RWY 03 (Fix and point list table)	AD 2-VTCT-8-8
Instrument Approach Chart - ICAO - ILS or LOC z RWY 03	AD 2-VTCT-8-9
Instrument Approach Chart - ICAO - ILS or LOC z RWY 03 (Fix and point list table)	AD 2-VTCT-8-10
Instrument Approach Chart - ICAO - ILS or LOC z RWY 03 (Tabular description)	AD 2-VTCT-8-11
Instrument Approach Chart - ICAO - RNP RWY 03	AD 2-VTCT-8-13
Instrument Approach Chart - ICAO - RNP RWY 03 (Tabular description)	AD 2-VTCT-8-14
Instrument Approach Chart - ICAO - RNP RWY 21	AD 2-VTCT-8-15
Instrument Approach Chart - ICAO - RNP RWY 21 (Tabular description)	AD 2-VTCT-8-16

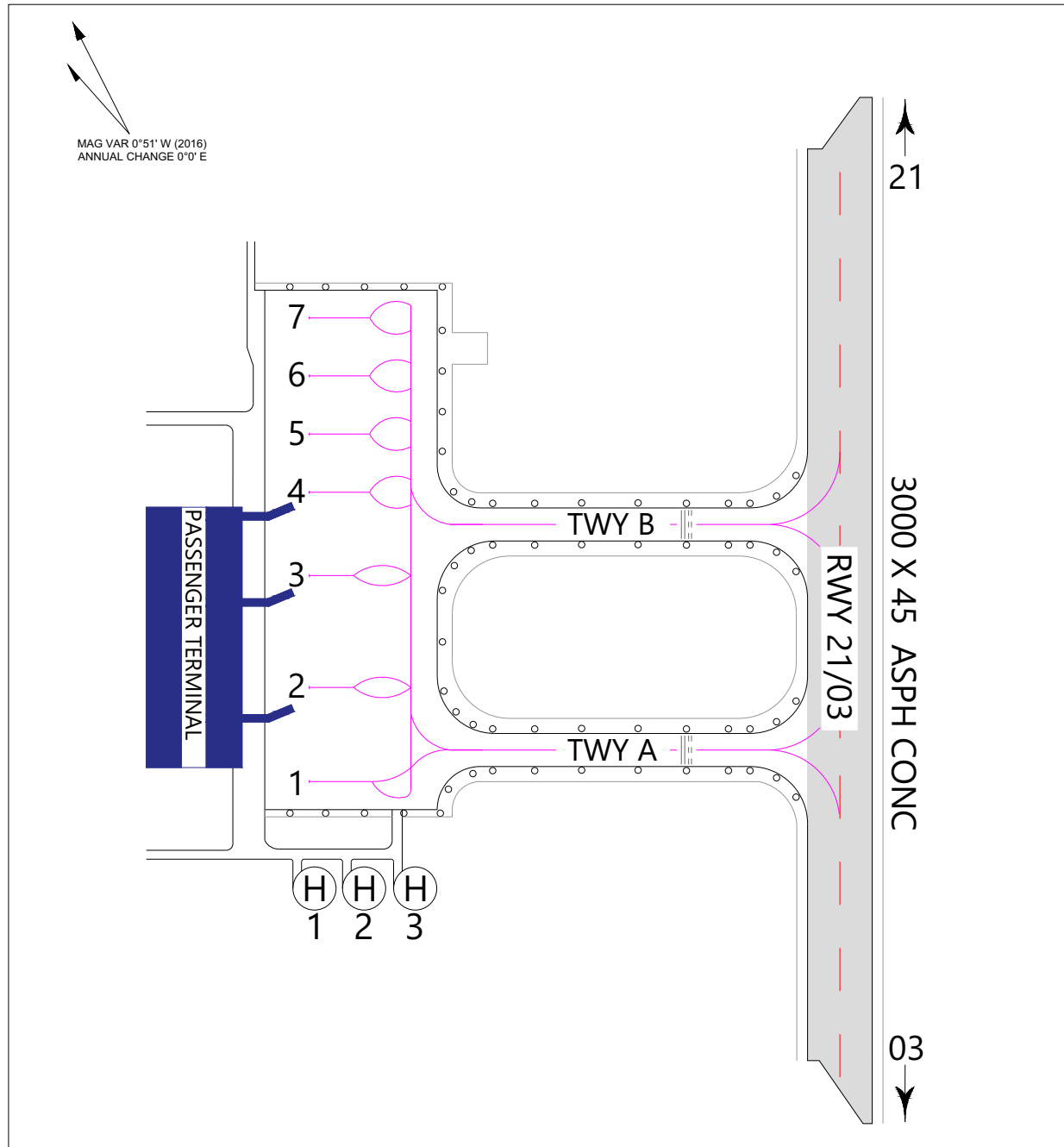
INTENTIONALLY BLANK

**AIRCRAFT PARKING/
DOCKING CHART - ICAO**

APRON ELEV
1274 FT

TWR 118.4

**CHIANG RAI /
Mae Fah Luang-Chiang Rai Intl**



REMARKS

1. AIRCRAFT STAND NR 2, 3 AND 4 AVAILABLE WITH SINGLE END PASSENGER LOADING BRIDGES
2. APRON ACFT STAND NR 1-4 SURFACE, STRENGTH : CONCRETE , PCN 73/R/D/X/T
3. APRON ACFT STAND NR 5-7 SURFACE, STRENGTH : CONCRETE , PCN 73/R/C/X/T

LEGEND	
AIRCRAFT STAND NR	1—
TWY APRON LIGHT	o
RUNWAY HOLDING POSITION	≡≡≡
HELIPAD	(H) 1-3

AIRCRAFT STAND COORDINATES			
STAND NR	COORDINATES		ACFT UP TO
1	19 57 11.64 N	099 52 45.34 E	B737
2	19 57 13.42 N	099 52 46.57 E	B747
3	19 57 15.72 N	099 52 47.70 E	B747
4	19 57 17.16 N	099 52 49.09 E	B737-900
5	19 57 18.53 N	099 52 49.34 E	A321
6	19 57 19.69 N	099 52 50.02 E	A321
7	19 57 20.84 N	099 52 50.69 E	A321
H1	19 57 09.44 N	099 52 44.64 E	
H2	19 57 08.90 N	099 52 45.68 E	
H3	19 57 08.34 N	099 52 46.76 E	

CHANGE: APRON ACFT STAND NR 6 AND 7 ADDED. AWOS REVISED. REMARKS REVISED. LEGEND REVISED. ACFT STAND COORD REVISED.

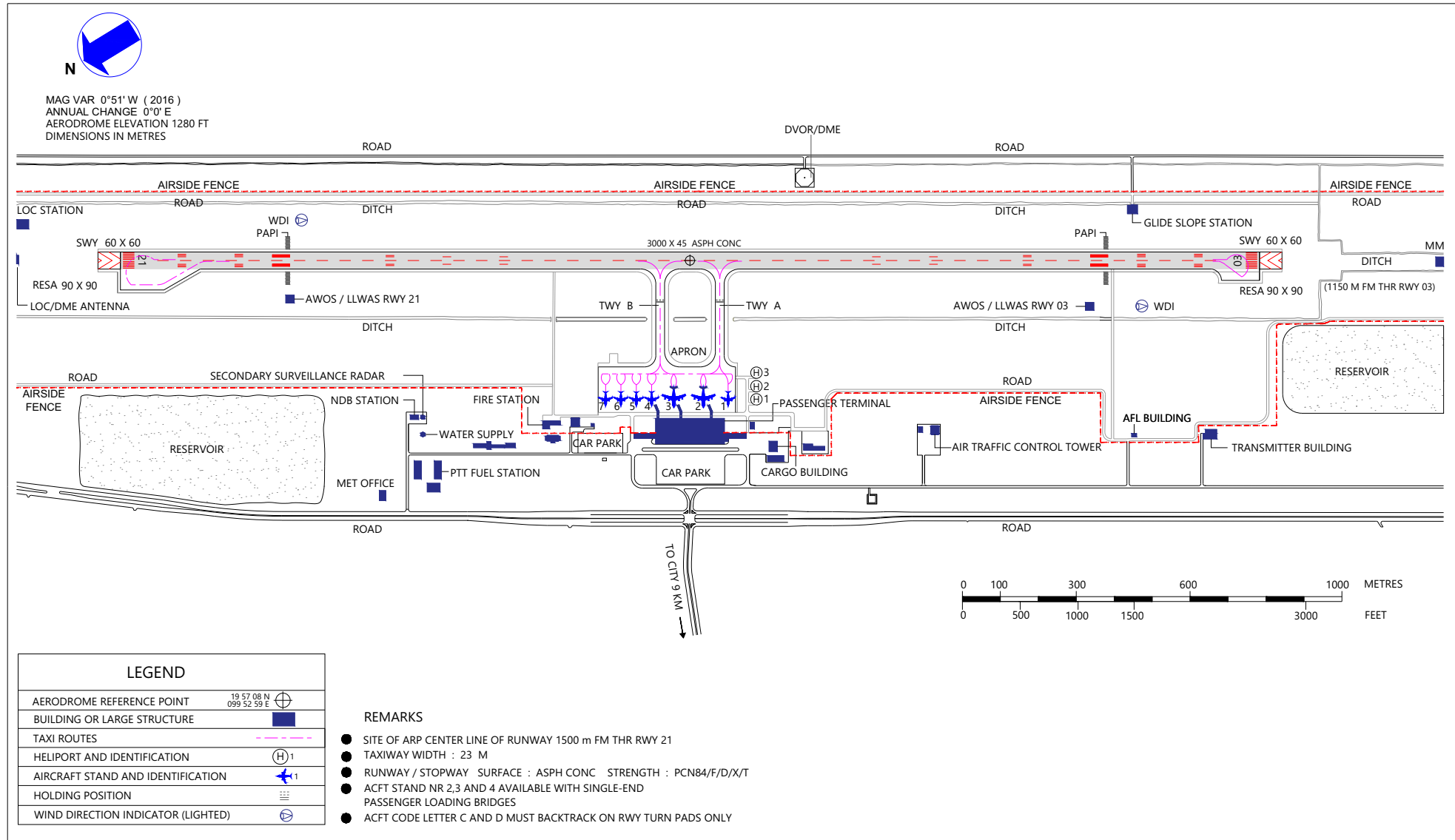
INTENTIONALLY BLANK

**AERODROME GROUND
MOVEMENT CHART - ICAO**

**APRON ELEV
1274 FT**

TWR 118.4

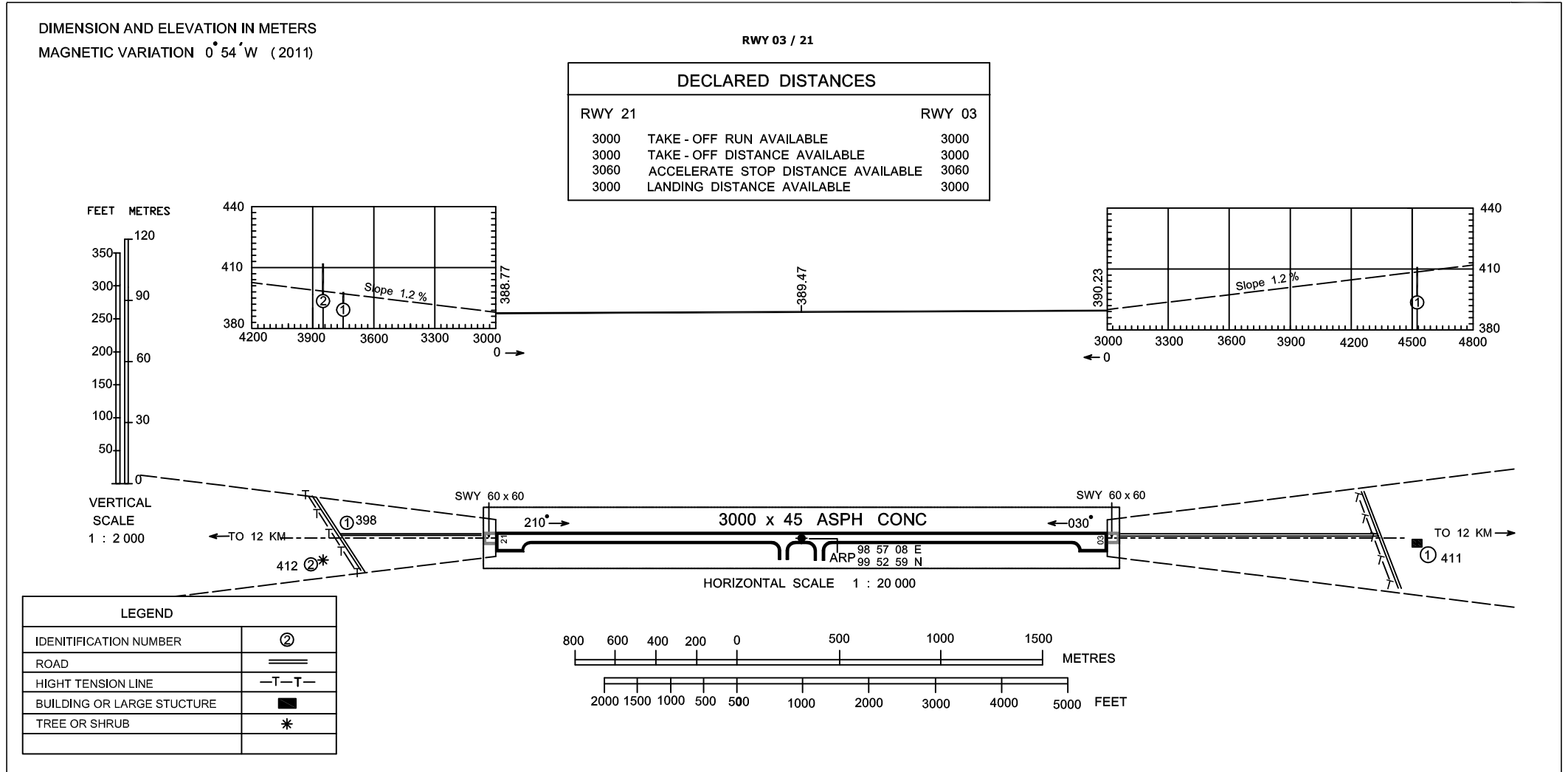
**CHIANG RAI /
Mae Fah Luang-Chiang Rai Intl**



INTENTIONALLY BLANK

AERODROME OBSTACLE CHART - ICAO
TYPE A (OPERATING LIMITATIONS)

Mae Fah Luang-Chiang Rai International Airport



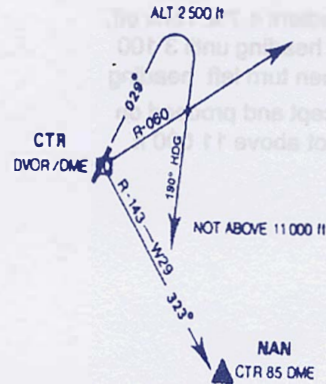
INTENTIONALLY BLANK

STANDARD INSTRUMENT DEPARTURE (SID) CHIANG RAI INTERNATIONAL AIRPORT

STANDARD INSTRUMENT DEPARTURE RUNWAY 03

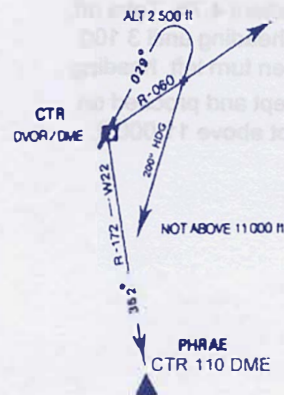
NAN ONE ALFA (NAN 1A)

Take off, climb runway heading until 2 500 FT or above, then turn right heading 190° to cross CTR R-060 not below 2 900 FT, to intercept and proceed on CTR R-143 not above 11 000 FT.



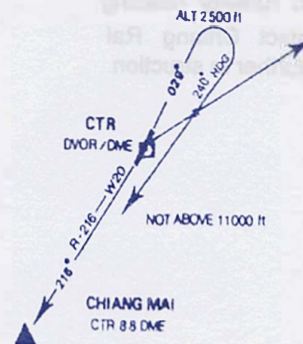
PHRAE ONE ALFA (PAE 1A)

Take off, climb runway heading until 2 500 FT or above, then turn right heading 200° to cross CTR R-060 not below 2 900 FT, to intercept and proceed on CTR R-172 not above 11 000 FT.



CHIANG MAI ONE ALFA (CMA 1A)

Take off, climb runway heading until 2 500 FT or above, then turn right heading 240° to cross CTR R-060 not below 2 900 FT, to intercept and proceed on CTR R-216 not above 11 000 FT.



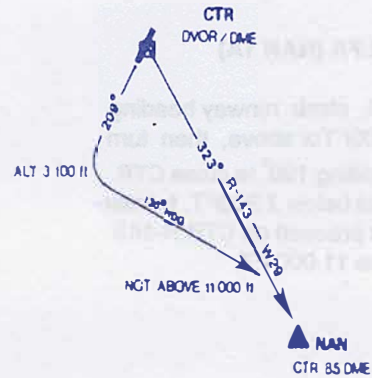
INTENTIONALLY BLANK

STANDARD INSTRUMENT DEPARTURE (SID) CHIANG RAI INTERNATIONAL AIRPORT

STANDARD INSTRUMENT DEPARTURE RUNWAY 21

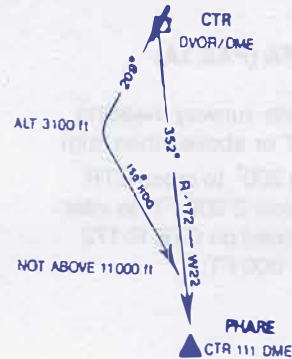
NAN ONE BRAVO (NAN 1B)

Departure gradient 4.7% Take off, climb runway heading until 3 100 ft or above, then turn left heading 130° to intercept and proceed on CTR R-143 not above 11 000 ft.



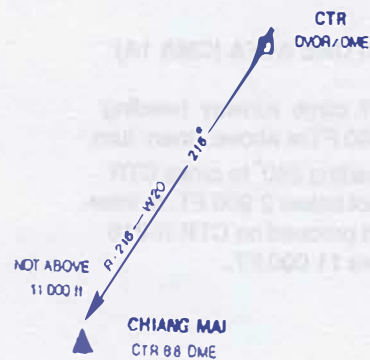
PHRAE ONE BRAVO (PAE 1B)

Departure gradient 4.7% Take off, climb runway heading until 3 100 ft or above, then turn left heading 150° to intercept and proceed on CTR R-172 not above 11 000 ft.



CHIANG MAI ONE BRAVO (CMA 1B)

Take off, climb runway heading 216° and contact Chiang Rai Approach for further in struction.



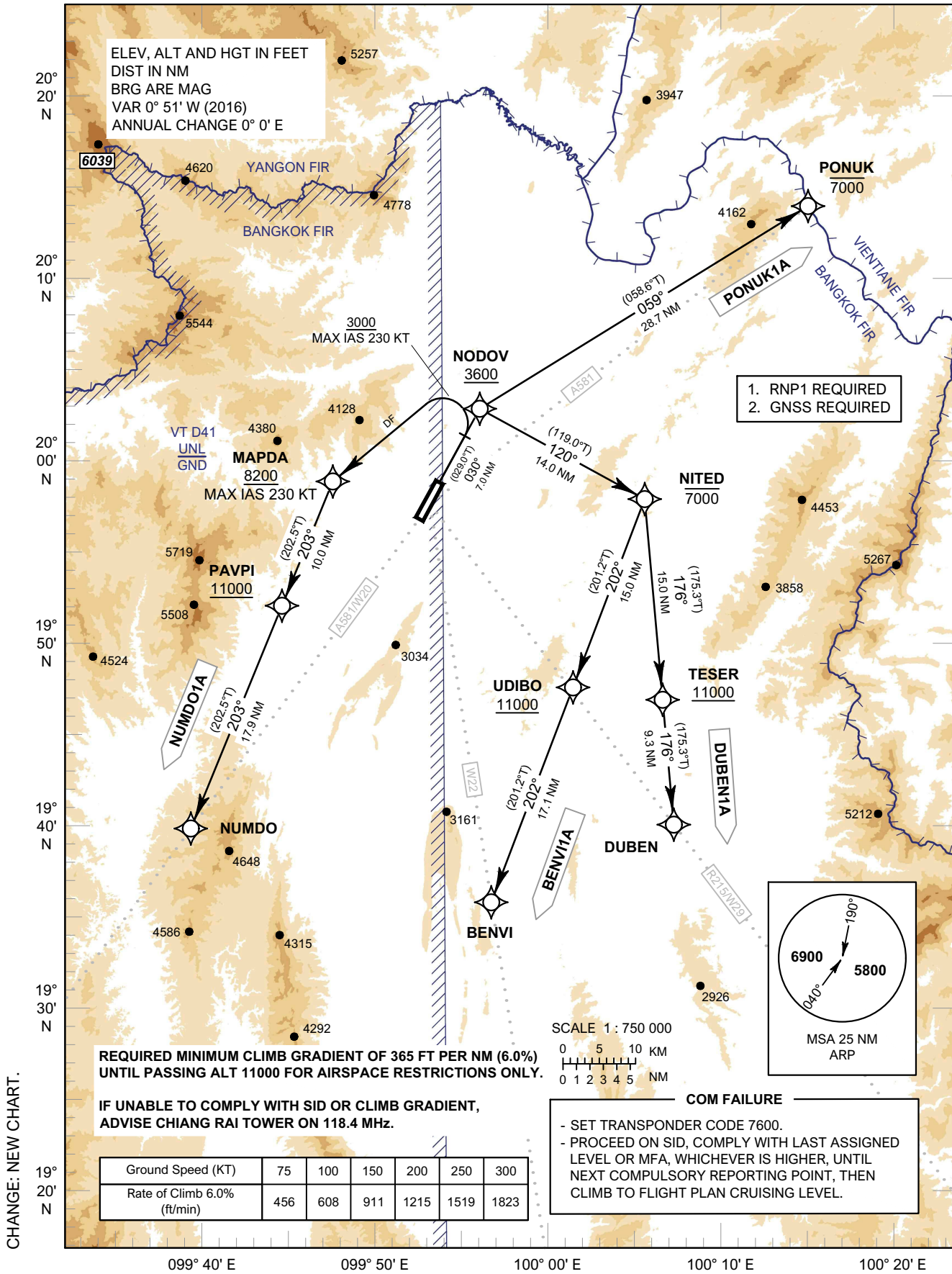
**STANDARD DEPARTURE CHART -
INSTRUMENT (SID) - ICAO**

TRANSITION ALTITUDE
11000 FT

APP : 120.05 , 257.8
TWR : 118.4 , 236.6
ATIS : 127.85

**CHIANG RAI /
Mae Fah Luang-Chiang Rai Intl (VTCT)
RNAV RWY03**

BENV1A DUBEN1A NUMDO1A PONUK1A



STANDARD DEPARTURE CHART -
INSTRUMENT (SID) - ICAO

CHIANG RAI /
Mae Fah Luang-Chiang Rai Intl (VTCT)
RNAV RWY03

BENVI1A DUBEN1A NUMDO1A PONUK1A

TABULAR DESCRIPTION

RNAV RWY03											
Serial Number	Path Descriptor	Waypoint Identifier	Flyover	Course °M (°T)	Magnetic Variation	Distance (NM)	Turn Direction	Altitude (FT)	Speed (KT)	VPA/TCH	Navigation Specification
BENVI1A											
010	-	DER RWY03	-	-	+0.85	-	-	-	-	-	RNP 1
020	TF	NODOV	-	030° (029.0°)	+0.85	7.0	R	+3600	-	-	RNP 1
030	TF	NITED	-	120° (119.0°)	+0.85	14.0	R	-7000	-	-	RNP 1
040	TF	UDIBO	-	202° (201.2°)	+0.85	15.0	-	+11000	-	-	RNP 1
050	TF	BENVI	-	202° (201.2°)	+0.85	17.1	-	-	-	-	RNP 1
DUBEN1A											
010	-	DER RWY03	-	-	+0.85	-	-	-	-	-	RNP 1
020	TF	NODOV	-	030° (029.0°)	+0.85	7.0	R	+3600	-	-	RNP 1
030	TF	NITED	-	120° (119.0°)	+0.85	14.0	R	-7000	-	-	RNP 1
040	TF	TESER	-	176° (175.3°)	+0.85	15.0	-	+11000	-	-	RNP 1
050	TF	DUBEN	-	176° (175.3°)	+0.85	9.3	-	-	-	-	RNP 1
NUMDO1A											
010	-	DER RWY03	-	-	+0.85	-	-	-	-	-	RNP 1
020	CA	-	-	030° (029.0°)	+0.85	-	-	+3000	-230	-	RNP 1
030	DF	MAPDA	-	-	+0.85	-	L	+8200	-230	-	RNP 1
040	TF	PAVPI	-	203° (202.5°)	+0.85	10.0	-	+11000	-	-	RNP 1
050	TF	NUMDO	-	203° (202.5°)	+0.85	17.9	-	-	-	-	RNP 1
PONUK1A											
010	-	DER RWY03	-	-	+0.85	-	-	-	-	-	RNP 1
020	TF	NODOV	-	030° (029.0°)	+0.85	7.0	R	+3600	-	-	RNP 1
030	TF	PONUK	-	059° (058.6°)	+0.85	28.7	-	-7000	-	-	RNP 1

WAYPOINT LIST

RNAV RWY03	
Waypoint Identifier	Coordinates
DER RWY03	19° 57' 51.10" N 099° 53' 23.57" E
BENVI	19° 27' 06.52" N 099° 57' 41.02" E
DUBEN	19° 32' 49.42" N 100° 12' 06.83" E
MAPDA	19° 58' 37.25" N 099° 45' 20.92" E
NITED	19° 57' 10.08" N 100° 09' 59.64" E
NODOV	20° 03' 59.77" N 099° 56' 59.90" E
NUMDO	19° 32' 43.43" N 099° 34' 01.89" E
PAVPI	19° 49' 20.82" N 099° 41' 17.30" E
PONUK	20° 18' 58.10" N 100° 23' 05.80" E
TESER	19° 42' 09.74" N 100° 11' 18.11" E
UDIBO	19° 43' 07.93" N 100° 04' 14.12" E

STANDARD DEPARTURE CHART -
INSTRUMENT (SID) - ICAO

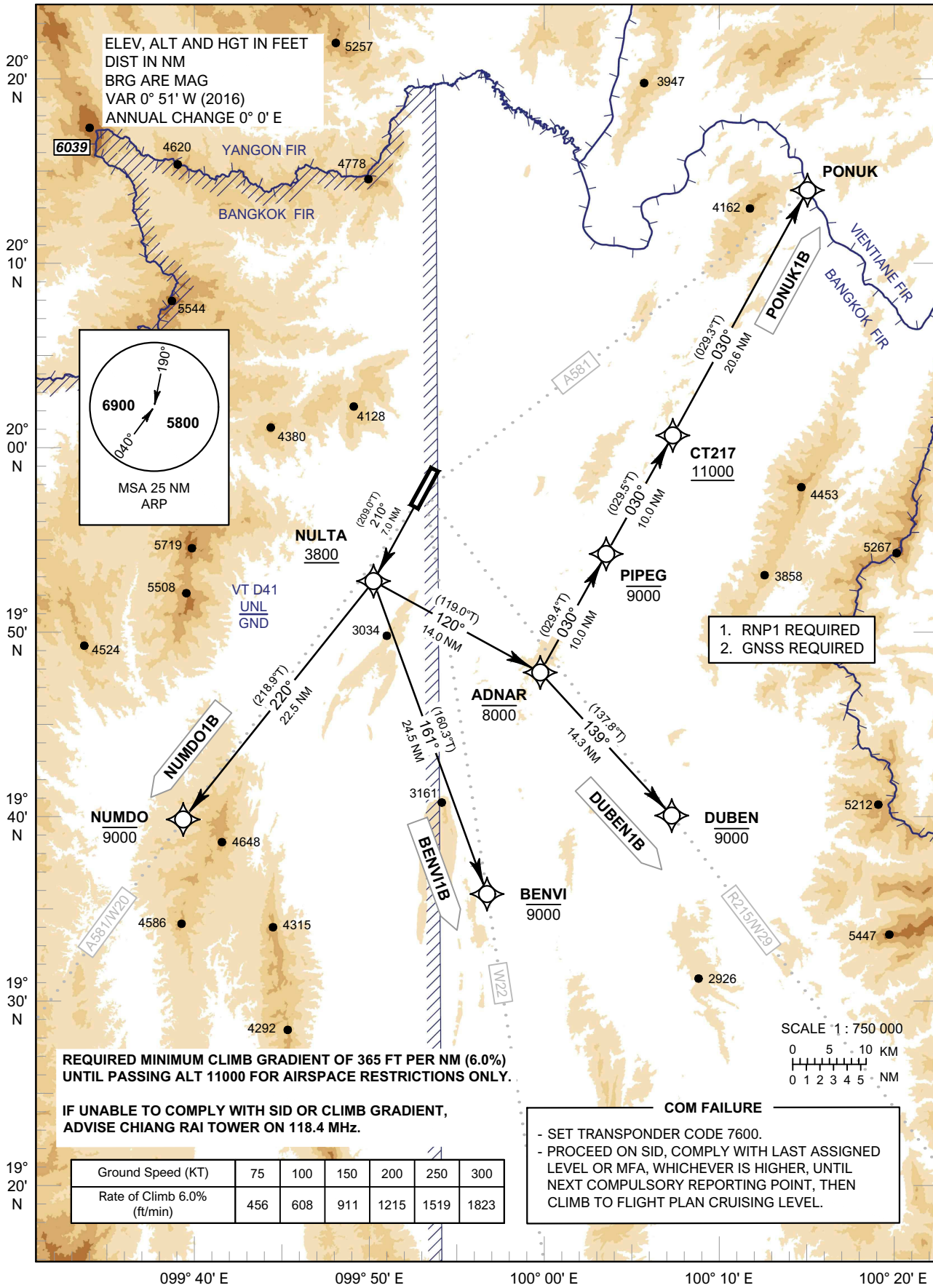
TRANSITION ALTITUDE
11000 FT

APP : 120.05 , 257.8
TWR : 118.4 , 236.6
ATIS : 127.85

CHIANG RAI /
Mae Fah Luang-Chiang Rai Intl (VTCT)

RNAV RWY21

BENVI1B DUBEN1B NUMDO1B PONUK1B



CHANGE: NEW CHART.

STANDARD DEPARTURE CHART -
INSTRUMENT (SID) - ICAO

CHIANG RAI /
Mae Fah Luang-Chiang Rai Intl (VTCT)
RNAV RWY21

BENVI1B DUBEN1B NUMDO1B PONUK1B

TABULAR DESCRIPTION

RNAV RWY21											
Serial Number	Path Descriptor	Waypoint Identifier	Flyover	Course °M (°T)	Magnetic Variation	Distance (NM)	Turn Direction	Altitude (FT)	Speed (KT)	VPA/TCH	Navigation Specification
BENVI1B											
010	-	DER RWY21	-	-	+0.85	-	-	-	-	-	RNP 1
020	TF	NULTA	-	210° (209.0°)	+0.85	7.0	L	+3800	-	-	RNP 1
030	TF	BENVI	-	161° (160.3°)	+0.85	24.5	-	-9000	-	-	RNP 1
DUBEN1B											
010	-	DER RWY21	-	-	+0.85	-	-	-	-	-	RNP 1
020	TF	NULTA	-	210° (209.0°)	+0.85	7.0	L	+3800	-	-	RNP 1
030	TF	ADNAR	-	120° (119.0°)	+0.85	14.0	R	-8000	-	-	RNP 1
040	TF	DUBEN	-	139° (137.8°)	+0.85	14.3	-	-9000	-	-	RNP 1
NUMDO1B											
010	-	DER RWY21	-	-	+0.85	-	-	-	-	-	RNP 1
020	TF	NULTA	-	210° (209.0°)	+0.85	7.0	R	+3800	-	-	RNP 1
030	TF	NUMDO	-	220° (218.9°)	+0.85	22.5	-	-9000	-	-	RNP 1
PONUK1B											
010	-	DER RWY21	-	-	+0.85	-	-	-	-	-	RNP 1
020	TF	NULTA	-	210° (209.0°)	+0.85	7.0	L	+3800	-	-	RNP 1
030	TF	ADNAR	-	120° (119.0°)	+0.85	14.0	L	-8000	-	-	RNP 1
040	TF	PIPEG	-	030° (029.4°)	+0.85	10.0	-	-9000	-	-	RNP 1
050	TF	CT217	-	030° (029.5°)	+0.85	10.0	-	+11000	-	-	RNP 1
060	TF	PONUK	-	030° (029.3°)	+0.85	20.6	-	-	-	-	RNP 1

WAYPOINT LIST

RNAV RWY21	
Waypoint Identifier	Coordinates
DER RWY21	19° 56' 25.75" N 099° 52' 33.51" E
ADNAR	19° 43' 27.89" N 100° 01' 56.29" E
BENVI	19° 27' 06.52" N 099° 57' 41.02" E
CT217	20° 00' 56.46" N 100° 12' 22.85" E
DUBEN	19° 32' 49.42" N 100° 12' 06.83" E
NULTA	19° 50' 17.04" N 099° 48' 57.42" E
NUMDO	19° 32' 43.43" N 099° 34' 01.89" E
PIPEG	19° 52' 12.36" N 100° 07' 09.09" E
PONUK	20° 18' 58.10" N 100° 23' 05.80" E

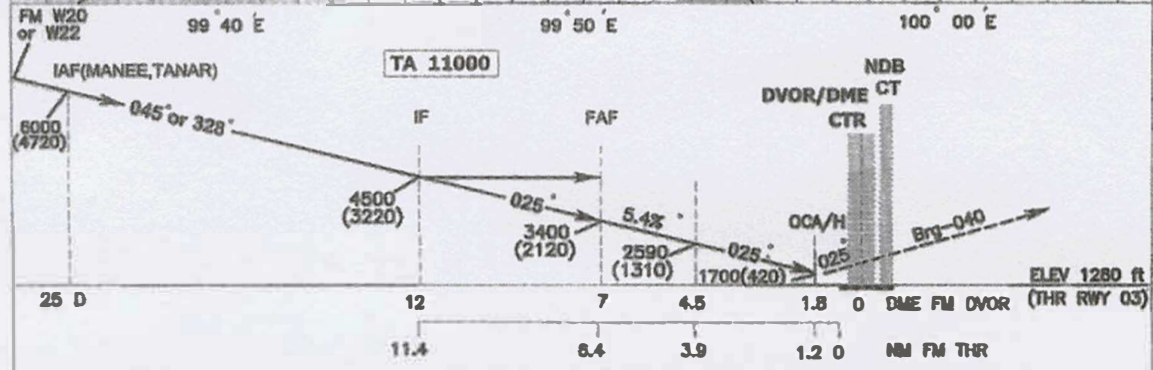
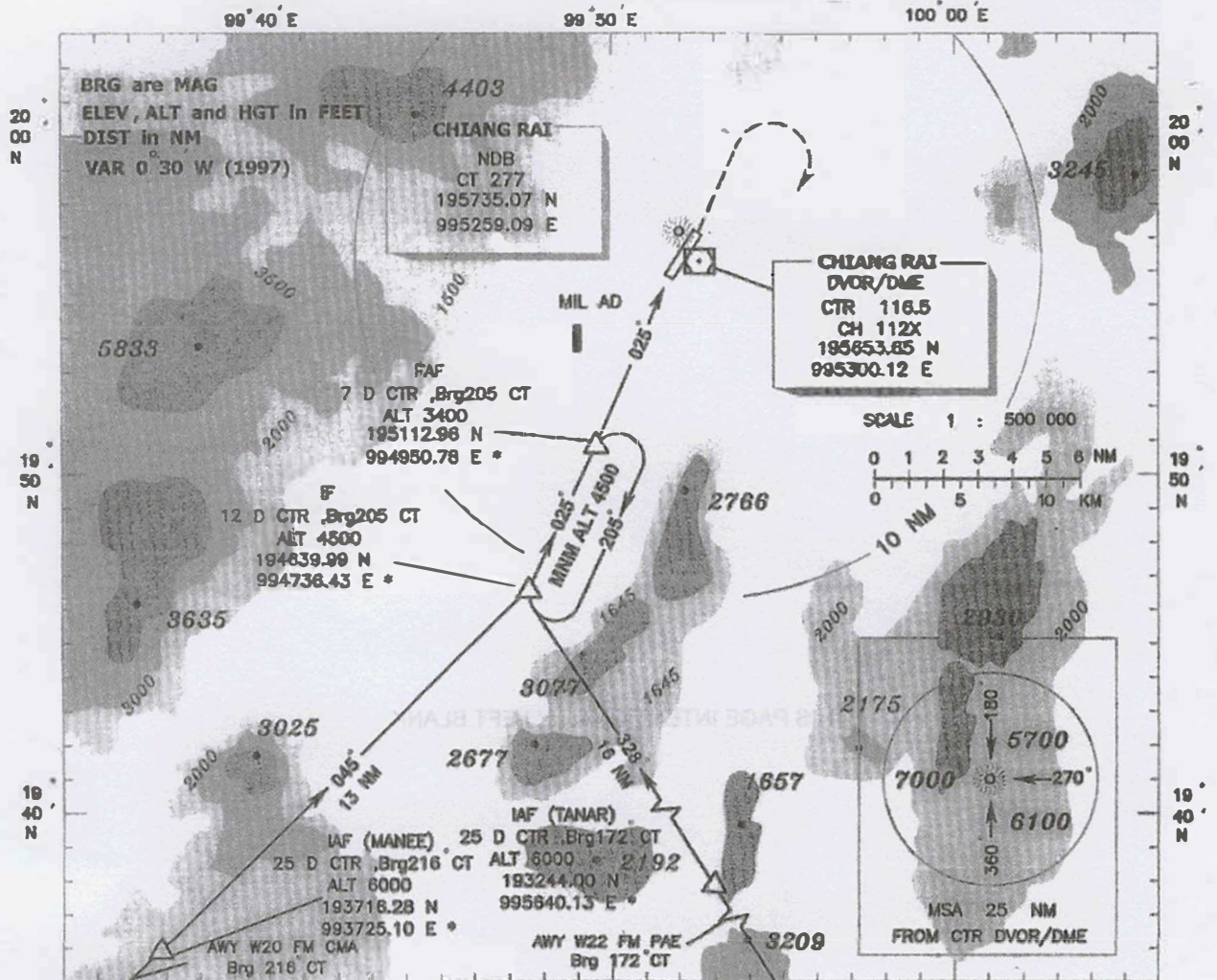
INTENTIONALLY BLANK

**INSTRUMENT
APPROACH
CHART - ICAO**

**AERODROME ELEV 1280 ft
HEIGHTS RELATED TO
AERODROME ELEV**

**APP : 120.05 ,257.8
TWR : 118.4 ,236.6**

**CHIANG RAI / Chiang Rai
NDB/DME
RWY 03**



MISSED APPROACH : Climb on track 025 to the NDB ,then climb on Brq-040 to 2600(1220) ft within 5 D ,then turn right to NDB and continuing climb on Brq 205 to FAF 4500(3220) ft and hold.
Remark : ACFT CAT C and D circling to the right only.

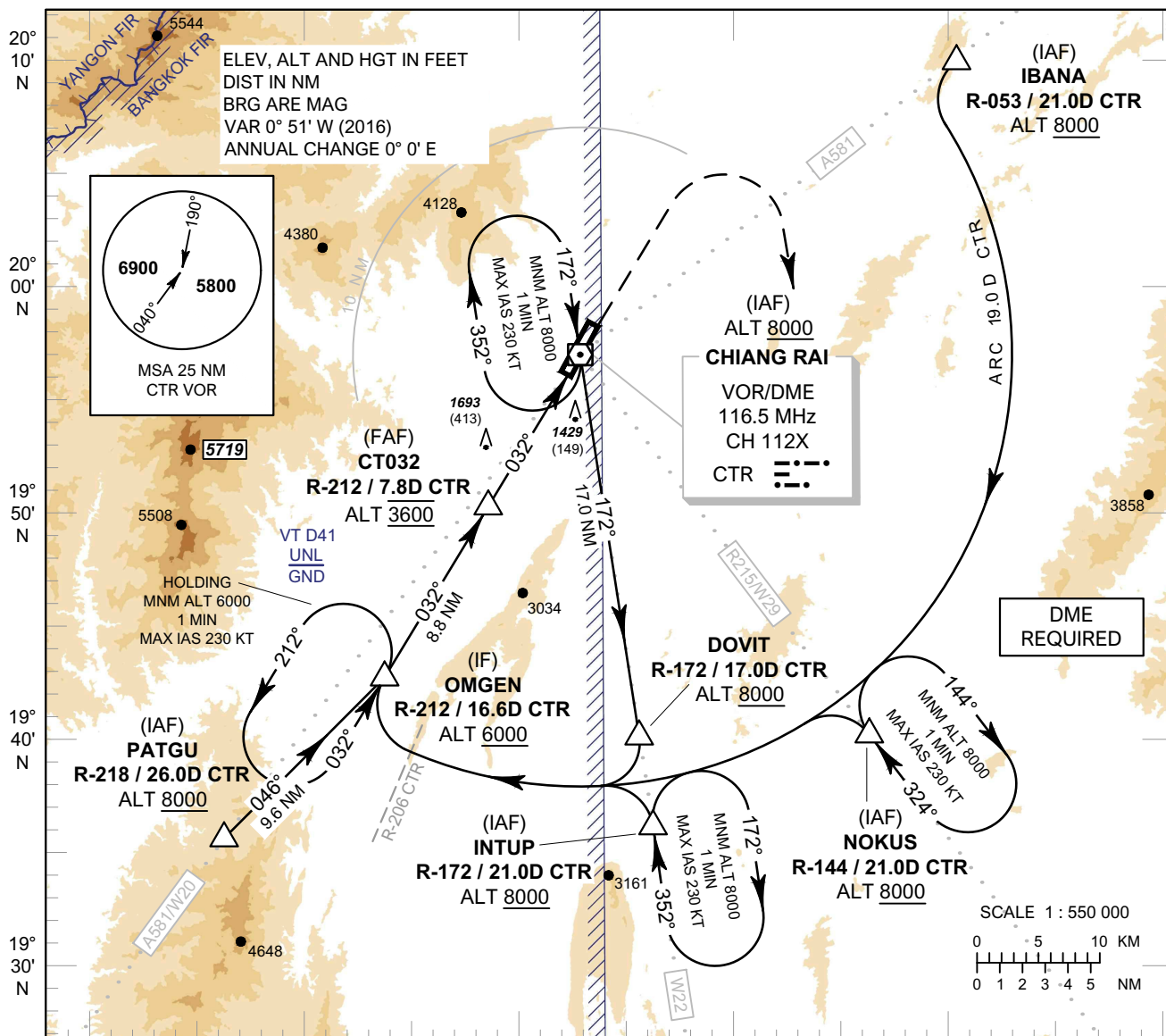
		Distance				2 D	3 D	4 D	5 D
OCA/H	A	B	C	D	Altitude(Height)	1770 (490)	2100 (820)	2425 (1145)	2755 (1475)
Straight-in approach	1700(420)				GS	knot	100	120	140
Circling	1800(520)	1870 (590)	1970 (690)		Rate of descent (ft/min)	545	655	765	875
						160	180	200	1095

INTENTIONALLY BLANK

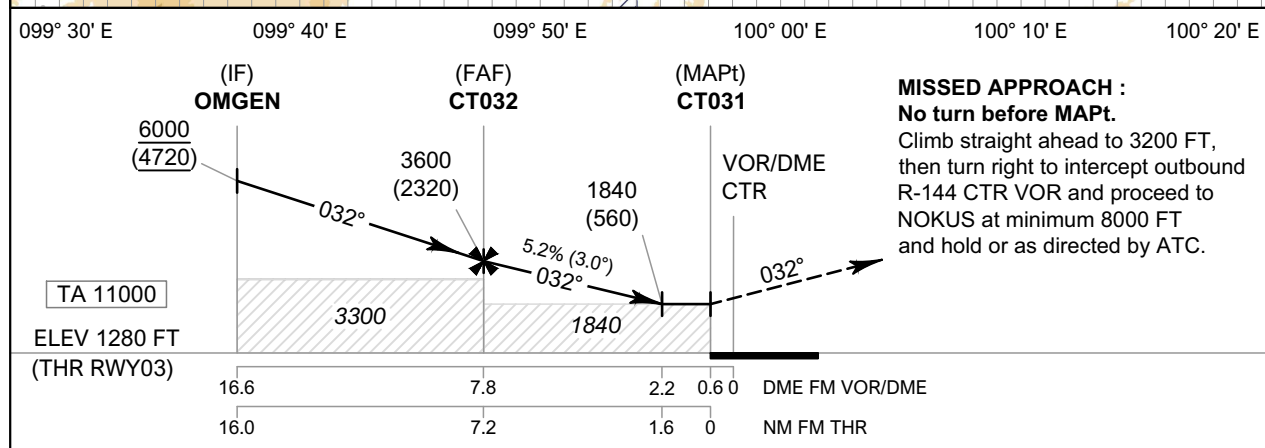
INSTRUMENT APPROACH CHART - ICAO
AERODROME ELEV 1280 FT
HEIGHTS RELATED TO AERODROME ELEV

APP : 120.05 , 257.8
TWR : 118.4 , 236.6
ATIS : 127.85

CHIANG RAI / Mae Fah Luang-Chiang Rai Intl (VTCT)
VOR RWY03



CHANGE: REVISED CHART. INTERMEDIATE APPROACH SEGMENT - NO HORIZONTAL DISTANCE 1.5 NM DUE TO TERRAIN RESTRICTIONS.



OCA/H	Distance (CTR)				Distance (CTR)	FAF	7 D	6 D	5 D	4 D	3 D	2.2 D
	A	B	C	D								
Straight-in Approach	1840 (560)				Altitude (Height)	3600 (2320)	3350 (2070)	3035 (1755)	2720 (1440)	2405 (1125)	2090 (810)	1840 (560)
					Ground Speed	knot	70	90	100	120	140	160
Circling (OCH AAL)	1900 (620)		3070 (1790)		Rate of Descent 5.2%	ft/min	369	474	527	632	737	843

INSTRUMENT AERODROME ELEV 1280 FT
APPROACH HEIGHTS RELATED TO
CHART - ICAO AERODROME ELEV

CHIANG RAI /
Mae Fah Luang-Chiang Rai Intl (VTCT)
VOR RWY03

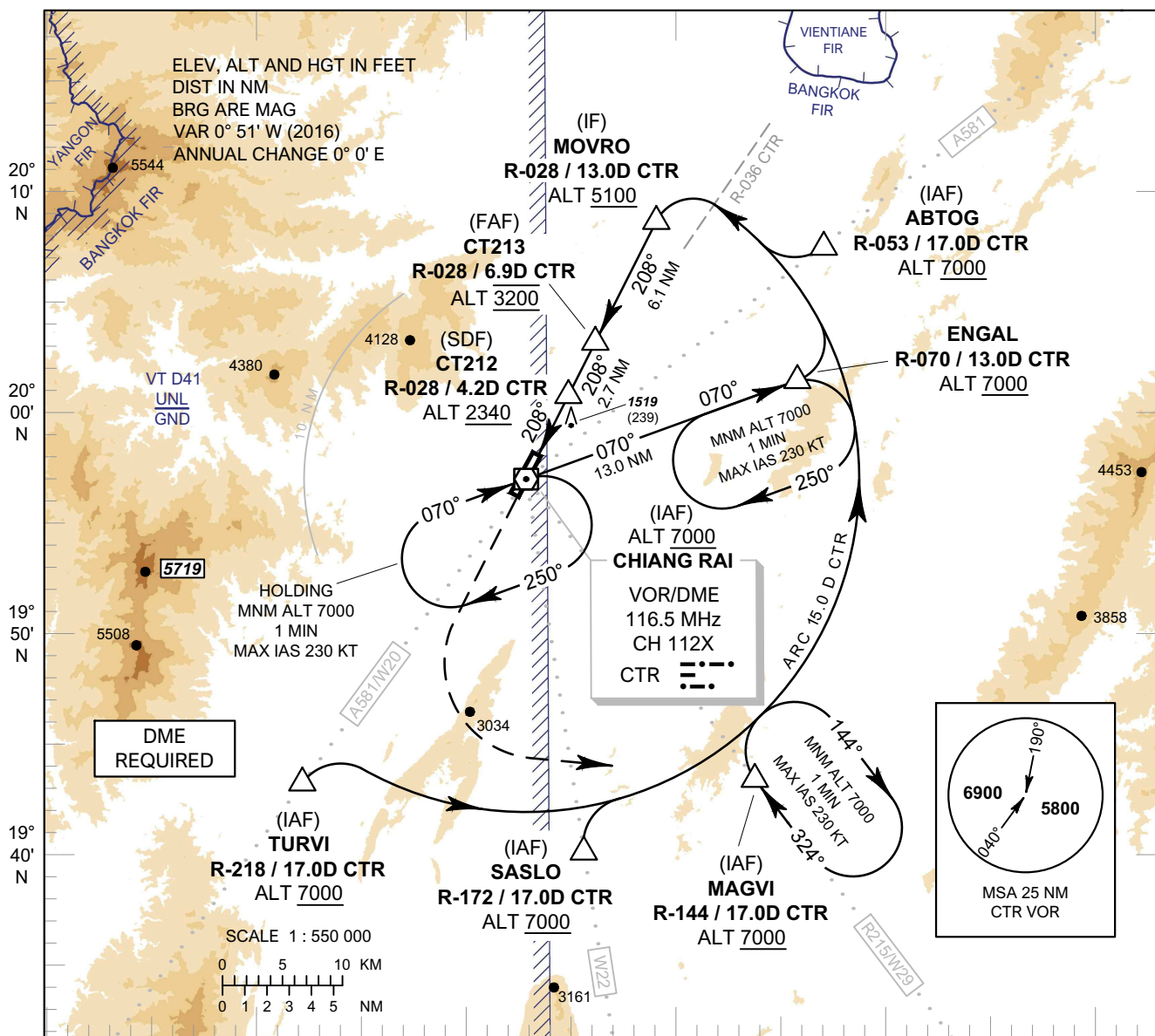
Fix / Point		Coordinates	
(IAF) PATGU	R-218 / 26.0D CTR	19° 35' 56.91" N	099° 36' 33.32" E
(IAF) IBANA	R-053 / 21.0D CTR	20° 09' 45.26" N	100° 10' 40.57" E
(IAF) NOKUS	R-144 / 21.0D CTR	19° 40' 02.91" N	100° 06' 23.41" E
(IAF) INTUP	R-172 / 21.0D CTR	19° 36' 02.68" N	099° 56' 16.93" E
DOVIT	R-172 / 17.0D CTR	19° 40' 00.97" N	099° 55' 39.51" E
(IF) OMGEN	R-212 / 16.6D CTR	19° 42' 40.73" N	099° 43' 47.92" E
(FAF) CT032	R-212 / 7.8D CTR	19° 50' 12.68" N	099° 48' 40.28" E
(MAPt) CT031	R-212 / 0.6D CTR	19° 56' 21.62" N	099° 52' 39.35" E
(IAF) VOR	CTR	19° 56' 53.65" N	099° 53' 00.12" E

**INSTRUMENT
APPROACH
CHART - ICAO**

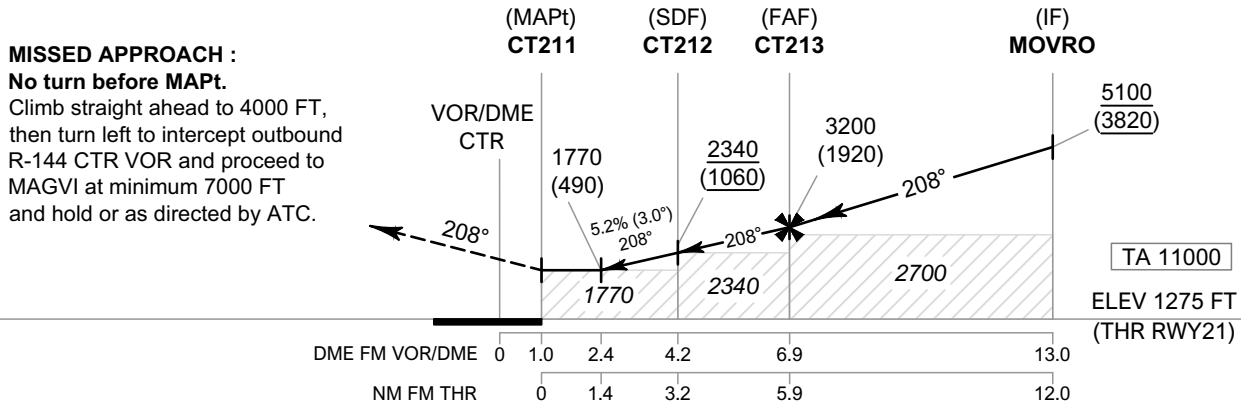
**AERODROME ELEV 1280 FT
HEIGHTS RELATED TO
AERODROME ELEV**

APP : 120.05 , 257.8
TWR : 118.4 , 236.6
ATIS : 127.85

**CHIANG RAI /
Mae Fah Luang-Chiang Rai Intl (VTCT)
VOR RWY21**



099° 30' E 099° 40' E 099° 50' E 100° 00' E 100° 10' E 100° 20' E



OCA/H	A	B	C	D	Distance (CTR)	2.4 D	3 D	4 D	5 D	6 D	FAF	
Straight-in Approach	1770 (490)				Altitude (Height)	1770 (490)	1960 (680)	2280 (1000)	2595 (1315)	2910 (1630)	3200 (1920)	
					Ground Speed	knot	70	90	100	120	140	160
Circling (OCH AAL)	1900 (620)		3070 (1790)		Rate of Descent 5.2%	ft/min	369	474	527	632	737	843

CHANGE: REVISED CHART. INTERMEDIATE APPROACH SEGMENT - NO HORIZONTAL DISTANCE 1.5 NM DUE TO TERRAIN RESTRICTIONS.

INSTRUMENT APPROACH CHART - ICAO
AERODROME ELEV 1280 FT
HEIGHTS RELATED TO
AERODROME ELEV

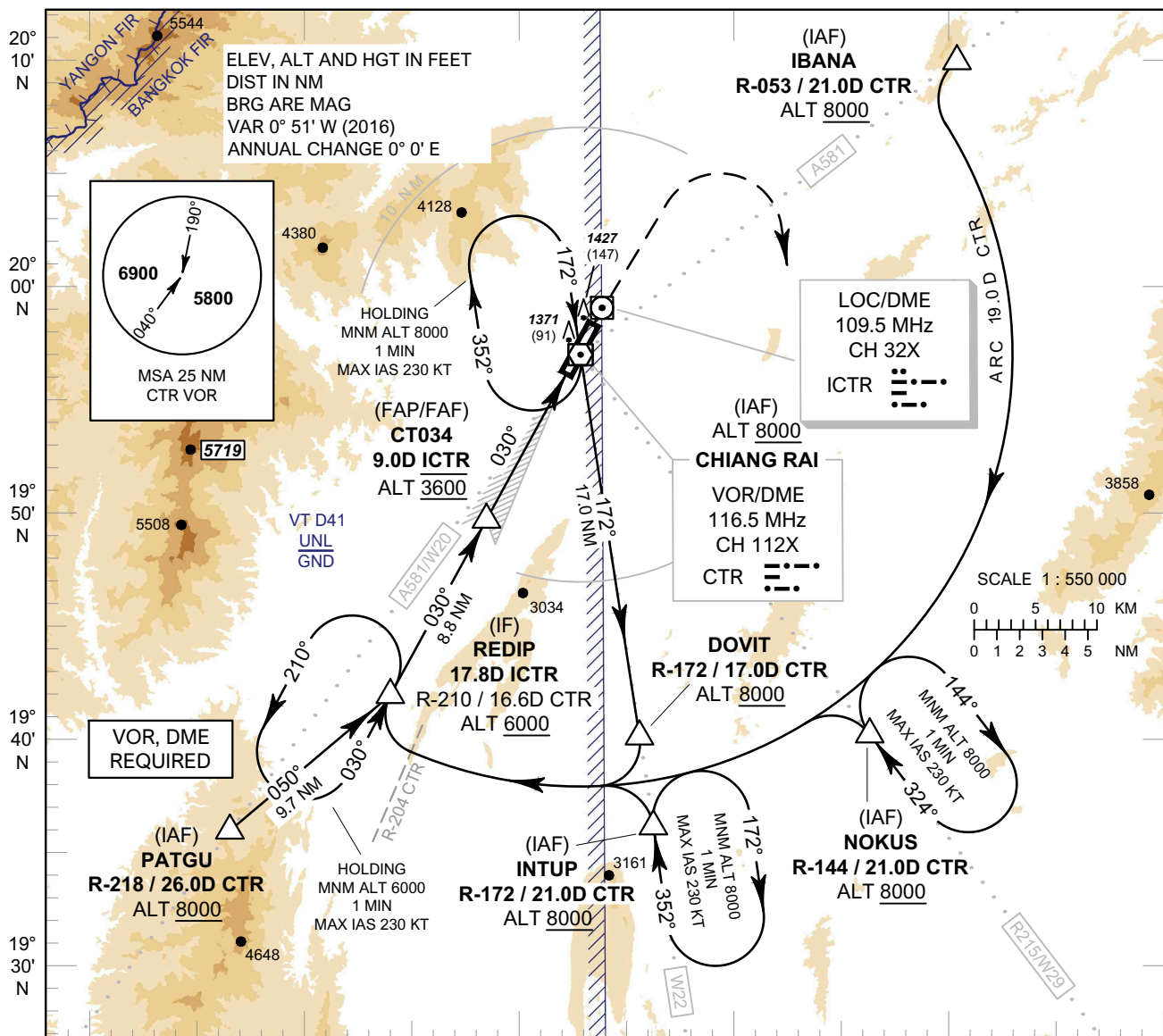
CHIANG RAI /
Mae Fah Luang-Chiang Rai Intl (VTCT)
VOR RWY21

Fix / Point		Coordinates	
(IAF) TURVI	R-218 / 17.0D CTR	19° 43' 12.11" N	099° 42' 14.42" E
(IAF) SASLO	R-172 / 17.0D CTR	19° 40' 00.97" N	099° 55' 39.51" E
(IAF) MAGVI	R-144 / 17.0D CTR	19° 43' 15.51" N	100° 03' 50.62" E
(IAF) ABTOG	R-053 / 17.0D CTR	20° 07' 18.42" N	100° 07' 18.36" E
ENGAL	R-070 / 13.0D CTR	20° 01' 33.76" N	100° 05' 53.48" E
(IF) MOVRO	R-028 / 13.0D CTR	20° 08' 31.36" N	099° 59' 17.89" E
(FAF) CT213	R-028 / 6.9D CTR	20° 03' 04.38" N	099° 56' 20.72" E
(SDF) CT212	R-028 / 4.2D CTR	20° 00' 40.06" N	099° 55' 02.59" E
(MAPt) CT211	R-028 / 1.0D CTR	19° 57' 48.48" N	099° 53' 29.77" E
(IAF) VOR	CTR	19° 56' 53.65" N	099° 53' 00.12" E

INSTRUMENT APPROACH CHART - ICAO
AERODROME ELEV 1280 FT
HEIGHTS RELATED TO THR RWY03 - ELEV 1280 FT

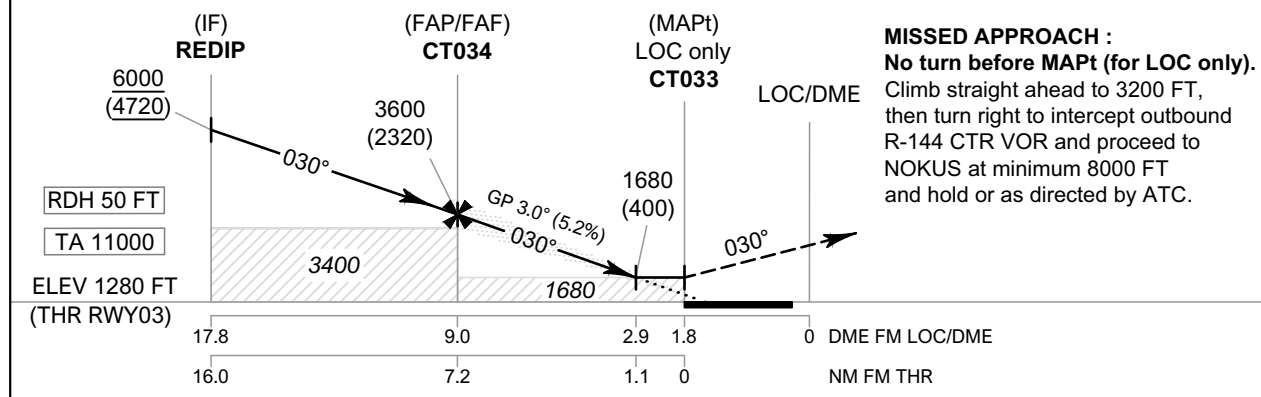
APP : 120.05 , 257.8
TWR : 118.4 , 236.6
ATIS : 127.85

CHIANG RAI / Mae Fah Luang-Chiang Rai Intl (VTCT)
ILS or LOC y RWY03



CHANGE: CTR VOR HOLDING MNM ALT. INTERMEDIATE APPROACH SEGMENT - NO HORIZONTAL DISTANCE 1.5 NM DUE TO TERRAIN RESTRICTIONS.

099° 30' E 099° 40' E 099° 50' E 100° 00' E 100° 10' E 100° 20' E



OCA/H	A	B	C	D	GS OUT	Distance (ICTR)	FAF	8 D	7 D	6 D	5 D	4 D	3 D	2.9 D
						Altitude (Height)	3600 (2320)	3290 (2010)	2975 (1695)	2655 (1375)	2340 (1060)	2025 (745)	1710 (430)	1680 (400)
Straight-in Approach	CAT I													
LOC only	1680 (400)					Ground Speed	knot	70	90	100	120	140	160	
Circling (OCH AAL)	1900 (620)		3070 (1790)			Rate of Descent	5.2%	ft/min	369	474	527	632	737	843

INSTRUMENT AERODROME ELEV 1280 FT
APPROACH HEIGHTS RELATED TO
CHART - ICAO THR RWY03 - 1280 FT

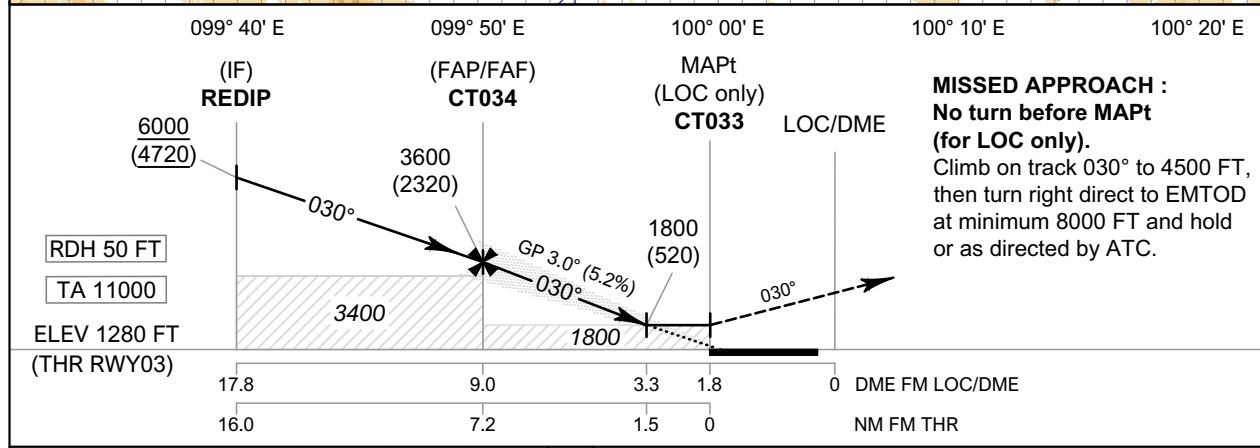
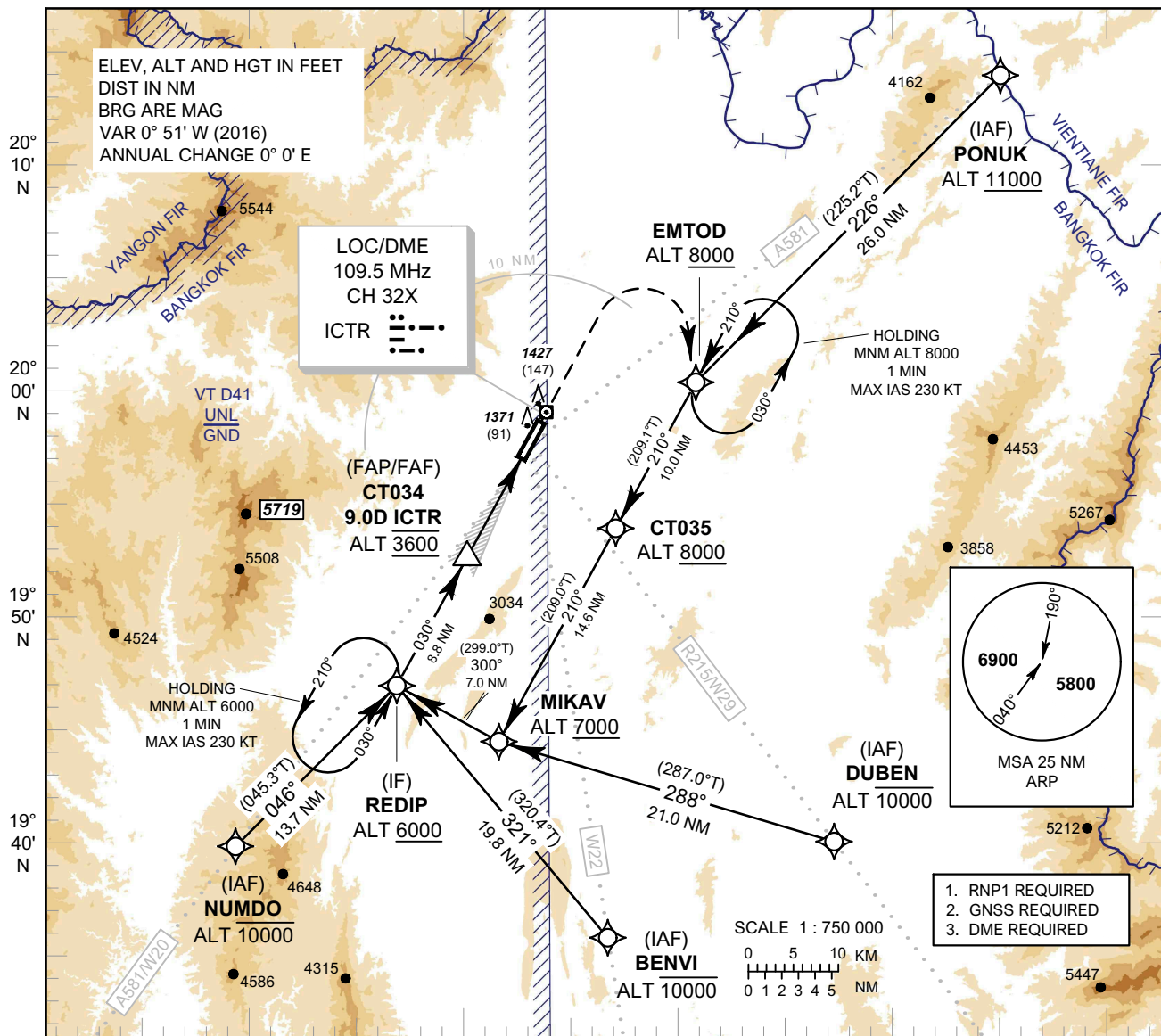
CHIANG RAI /
Mae Fah Luang-Chiang Rai Intl (VTCT)
ILS or LOC y RWY03

Fix / Point		Coordinates	
(IAF) PATGU	R-218 / 26.0D CTR	19° 35' 56.91" N	099° 36' 33.32" E
(IAF) IBANA	R-053 / 21.0D CTR	20° 09' 45.26" N	100° 10' 40.57" E
(IAF) NOKUS	R-144 / 21.0D CTR	19° 40' 02.91" N	100° 06' 23.41" E
(IAF) INTUP	R-172 / 21.0D CTR	19° 36' 02.68" N	099° 56' 16.93" E
DOVIT	R-172 / 17.0D CTR	19° 40' 00.97" N	099° 55' 39.51" E
(IF) REDIP	17.8D ICTR	19° 42' 22.84" N	099° 44' 20.05" E
(FAP/FAF) CT034	9.0D ICTR	19° 50' 06.49" N	099° 48' 51.27" E
(MAPt @ THR03) CT033	1.8D ICTR	19° 56' 25.75" N	099° 52' 33.51" E
LOC/DME	ICTR	19° 57' 59.50" N	099° 53' 28.50" E
GP	-	19° 56' 32.60" N	099° 52' 42.60" E
(IAF) VOR	CTR	19° 56' 53.65" N	099° 53' 00.12" E

INSTRUMENT APPROACH CHART - ICAO
AERODROME ELEV 1280 FT
HEIGHTS RELATED TO THR RWY03 - ELEV 1280 FT

APP : 120.05 , 257.8
TWR : 118.4 , 236.6
ATIS : 127.85

CHIANG RAI / Mae Fah Luang-Chiang Rai Intl (VTCT)
ILS or LOC z RWY03



OCA/H	A	B	C	D	GS OUT	Distance (ICTR)	FAF	8 D	7 D	6 D	5 D	4 D	3.3 D
						Straight-in Approach	1800 (520)				Altitude (Height)	3600 (2320)	3290 (2010)
LOC only					Ground Speed	knot	70	90	100	120	140	160	
Circling (OCH AAL)	1900 (620)		3070 (1790)		Rate of Descent	ft/min	369	474	527	632	737	843	

NOTE :

- OCA/H 1480 (200) FT of ILS procedure can be achieved for all aircraft categories which can commence a missed approach climb gradient of 3.5% (213 FT/NM) until after turn.
- OCA/H 1680 (400) FT of LOC only procedure can be achieved for all aircraft categories which can commence a missed approach climb gradient of 3.5% (213 FT/NM) until after turn.

CHANGE: NEW CHART. INTERMEDIATE APPROACH SEGMENT - NO HORIZONTAL DISTANCE 1.5 NM DUE TO TERRAIN RESTRICTIONS.

INSTRUMENT AERODROME ELEV 1280 FT
APPROACH HEIGHTS RELATED TO
CHART - ICAO THR RWY03 - ELEV 1280 FT

CHIANG RAI /
Mae Fah Luang-Chiang Rai Intl (VTCT)
ILS or LOC z RWY03

Fix / Point		Coordinates	
(IF) REDIP	17.8D ICTR	19° 42' 22.84" N	099° 44' 20.05" E
(FAP/FAF) CT034	9.0D ICTR	19° 50' 06.49" N	099° 48' 51.27" E
(MAPt @ THR03) CT033	1.8D ICTR	19° 56' 25.75" N	099° 52' 33.51" E
LOC/DME	ICTR	19° 57' 59.50" N	099° 53' 28.50" E
GP	-	19° 56' 32.60" N	099° 52' 42.60" E

INSTRUMENT APPROACH CHART - ICAO **AERODROME ELEV 1280 FT**
HEIGHTS RELATED TO
THR RWY03 - ELEV 1280 FT

CHIANG RAI /
Mae Fah Luang-Chiang Rai Intl (VTCT)
ILS or LOC z RWY03

TABULAR DESCRIPTION

ILS or LOC z RWY03											
Serial Number	Path Descriptor	Waypoint Identifier	Flyover	Course °M (°T)	Magnetic Variation	Distance (NM)	Turn Direction	Altitude (FT)	Speed (KT)	VPA/RDH	Navigation Specification
010	IF	(IAF) PONUK	-	-	+0.85	-	-	+11000	-	-	RNP 1
020	TF	EMTOD	-	226° (225.2°)	+0.85	26.0	L	+8000	-	-	RNP 1
030	TF	CT035	-	210° (209.1°)	+0.85	10.0	-	+8000	-	-	RNP 1
040	TF	MIKAV	-	210° (209.0°)	+0.85	14.6	R	+7000	-	-	RNP 1
050	TF	(IF) REDIP	-	300° (299.0°)	+0.85	7.0	-	+6000	-	-	RNP 1
010	IF	(IAF) DUBEN	-	-	+0.85	-	-	-10000	-	-	RNP 1
020	TF	MIKAV	-	288° (287.0°)	+0.85	21.0	R	+7000	-	-	RNP 1
030	TF	(IF) REDIP	-	300° (299.0°)	+0.85	7.0	-	+6000	-	-	RNP 1
010	IF	(IAF) BENVI	-	-	+0.85	-	-	-10000	-	-	RNP 1
020	TF	(IF) REDIP	-	321° (320.4°)	+0.85	19.8	-	+6000	-	-	RNP 1
010	IF	(IAF) NUMDO	-	-	+0.85	-	-	-10000	-	-	RNP 1
020	TF	(IF) REDIP	-	046° (045.3°)	+0.85	13.7	-	+6000	-	-	RNP 1
010	IF	(IF) REDIP	-	-	+0.85	-	-	+6000	-	-	RNP 1
TRANSITION TO ILS or LOC											
020	TF	(FAF/FAP) CT034	-	030° (029.0°)	+0.85	8.8	-	@3600	-	-	ILS
030	TF	(MAPt @THR03) CT033	Y	030° (029.0°)	+0.85	7.2	-	@1330	-	-3.0/50	ILS
040	CA	-	-	030° (029.0°)	+0.85	-	-	+4500	-	-	RNP 1
050	DF	EMTOD	-	-	+0.85	-	R	+8000	-	-	RNP 1
060	HM	EMTOD	Y	210° (209.1°)	+0.85	1 minute	L	+8000	-230	-	RNP 1

WAYPOINT LIST

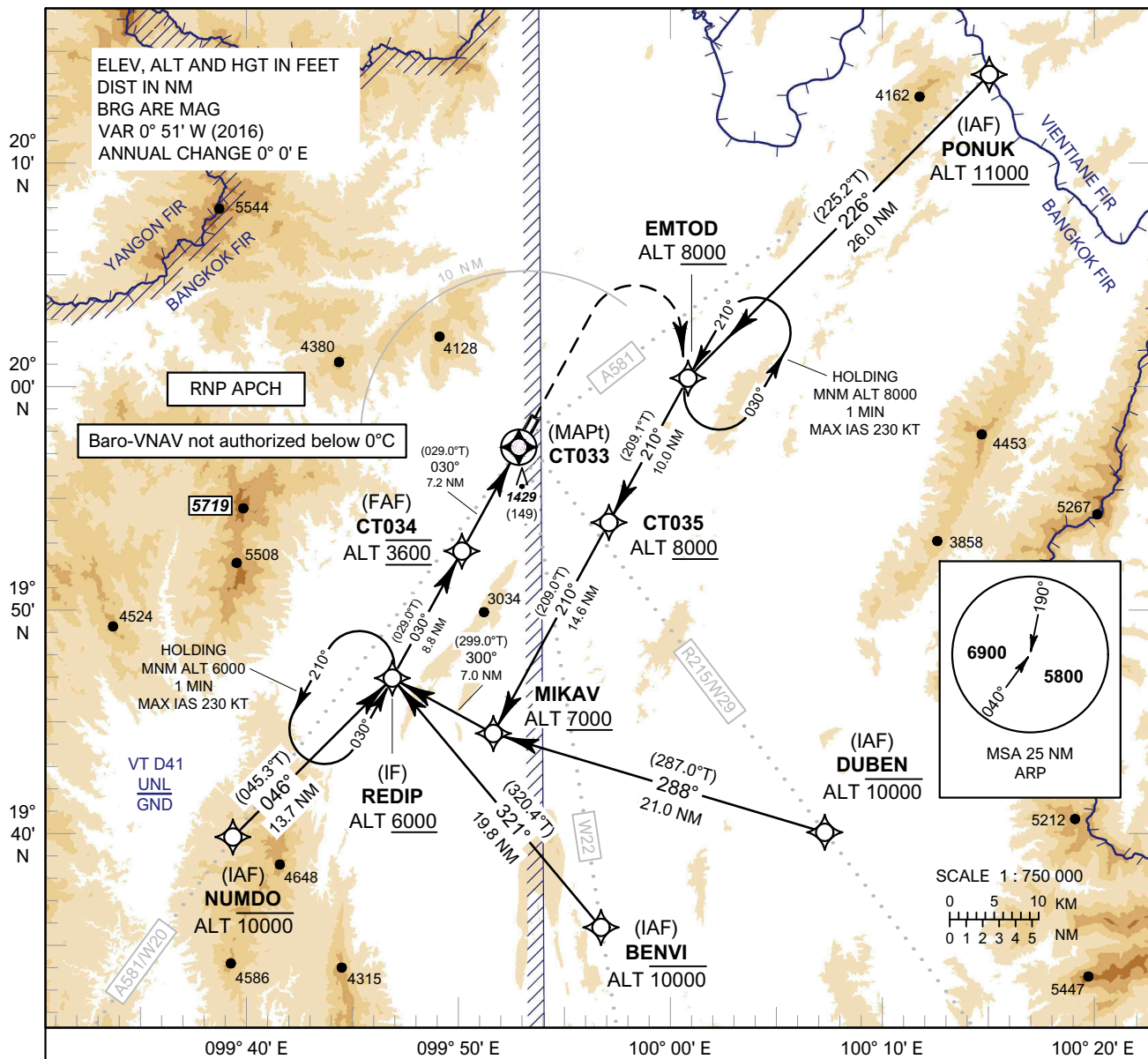
ILS or LOC z RWY03	
Waypoint Identifier	Coordinates
BENVI	19° 27' 06.52" N 099° 57' 41.02" E
CT033	19° 56' 25.75" N 099° 52' 33.51" E
CT034	19° 50' 06.49" N 099° 48' 51.27" E
CT035	19° 51' 48.57" N 099° 58' 20.63" E
DUBEN	19° 32' 49.42" N 100° 12' 06.83" E
EMTOD	20° 00' 35.03" N 100° 03' 29.95" E
MIKAV	19° 38' 58.56" N 099° 50' 49.39" E
NUMDO	19° 32' 43.43" N 099° 34' 01.89" E
PONUUK	20° 18' 58.10" N 100° 23' 05.80" E
REDIP	19° 42' 22.84" N 099° 44' 20.05" E

INTENTIONALLY BLANK

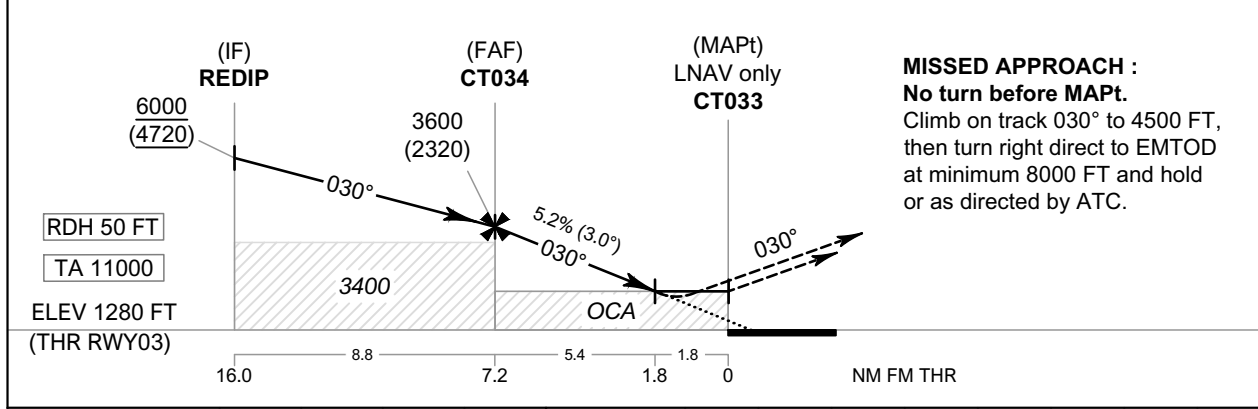
INSTRUMENT APPROACH CHART - ICAO
AERODROME ELEV 1280 FT
HEIGHTS RELATED TO THR RWY03 - ELEV 1280 FT

APP : 120.05 , 257.8
TWR : 118.4 , 236.6
ATIS : 127.85

CHIANG RAI / Mae Fah Luang-Chiang Rai Intl (VTCT)
RNP RWY03



CHANGE: REVISED CHART. INTERMEDIATE APPROACH SEGMENT - NO HORIZONTAL DISTANCE 1.5 NM DUE TO TERRAIN RESTRICTIONS.



OCA/H	A	B	C	D	NM to NEXT WPT	FAF	7 NM	6 NM	5 NM	4 NM	3 NM	2 NM	1.8 NM
LNAV / VNAV	1900 (620)				Altitude (Height)	3600 (2320)	3540 (2260)	3225 (1945)	2910 (1630)	2595 (1315)	2280 (1000)	1960 (680)	1900 (620)
LNAV					Ground Speed	knot		70	90	100	120	140	160
Circling (OCH AAL)	1900 (620)		3070 (1790)		Rate of Descent FAF-MAPt 5.2%	ft/min		369	474	527	632	737	843

NOTE :

- OCA/H 1600 (320) FT of LNAV/VNAV procedure can be achieved for all aircraft categories which can commence a missed approach climb gradient of 3.5% (213 FT/NM) until after turn.
- OCA/H 1680 (400) FT of LNAV procedure can be achieved for all aircraft categories which can commence a missed approach climb gradient of 3.5% (213 FT/NM) until after turn.

INSTRUMENT AERODROME ELEV 1280 FT
APPROACH HEIGHTS RELATED TO
CHART - ICAO THR RWY03 - ELEV 1280 FT

CHIANG RAI /
Mae Fah Luang-Chiang Rai Intl (VTCT)
RNP RWY03

TABULAR DESCRIPTION

RNP RWY03											
Serial Number	Path Descriptor	Waypoint Identifier	Flyover	Course °M (°T)	Magnetic Variation	Distance (NM)	Turn Direction	Altitude (FT)	Speed (KT)	VPA/TCH	Navigation Specification
010	IF	(IAF) PONUK	-	-	+0.85	-	-	+11000	-	-	RNP APCH
020	TF	EMTOD	-	226° (225.2°)	+0.85	26.0	L	+8000	-	-	RNP APCH
030	TF	CT035	-	210° (209.1°)	+0.85	10.0	-	+8000	-	-	RNP APCH
040	TF	MIKAV	-	210° (209.0°)	+0.85	14.6	R	+7000	-	-	RNP APCH
050	TF	(IF) REDIP	-	300° (299.0°)	+0.85	7.0	-	+6000	-	-	RNP APCH
010	IF	(IAF) DUBEN	-	-	+0.85	-	-	-10000	-	-	RNP APCH
020	TF	MIKAV	-	288° (287.0°)	+0.85	21.0	R	+7000	-	-	RNP APCH
030	TF	(IF) REDIP	-	300° (299.0°)	+0.85	7.0	-	+6000	-	-	RNP APCH
010	IF	(IAF) BENVI	-	-	+0.85	-	-	-10000	-	-	RNP APCH
020	TF	(IF) REDIP	-	321° (320.4°)	+0.85	19.8	-	+6000	-	-	RNP APCH
010	IF	(IAF) NUMDO	-	-	+0.85	-	-	-10000	-	-	RNP APCH
020	TF	(IF) REDIP	-	046° (045.3°)	+0.85	13.7	-	+6000	-	-	RNP APCH
010	IF	(IF) REDIP	-	-	+0.85	-	-	+6000	-	-	RNP APCH
020	TF	(FAF) CT034	-	030° (029.0°)	+0.85	8.8	-	@3600	-	-	RNP APCH
030	TF	(MAPt@THR03) CT033	Y	030° (029.0°)	+0.85	7.2	-	@1330	-	-3.0/50	RNP APCH
040	CA	-	-	030° (029.0°)	+0.85	-	-	+4500	-	-	RNP APCH
050	DF	EMTOD	-	-	+0.85	-	R	+8000	-	-	RNP APCH
060	HM	EMTOD	Y	210° (209.1°)	+0.85	1 minute	L	+8000	-230	-	RNP APCH

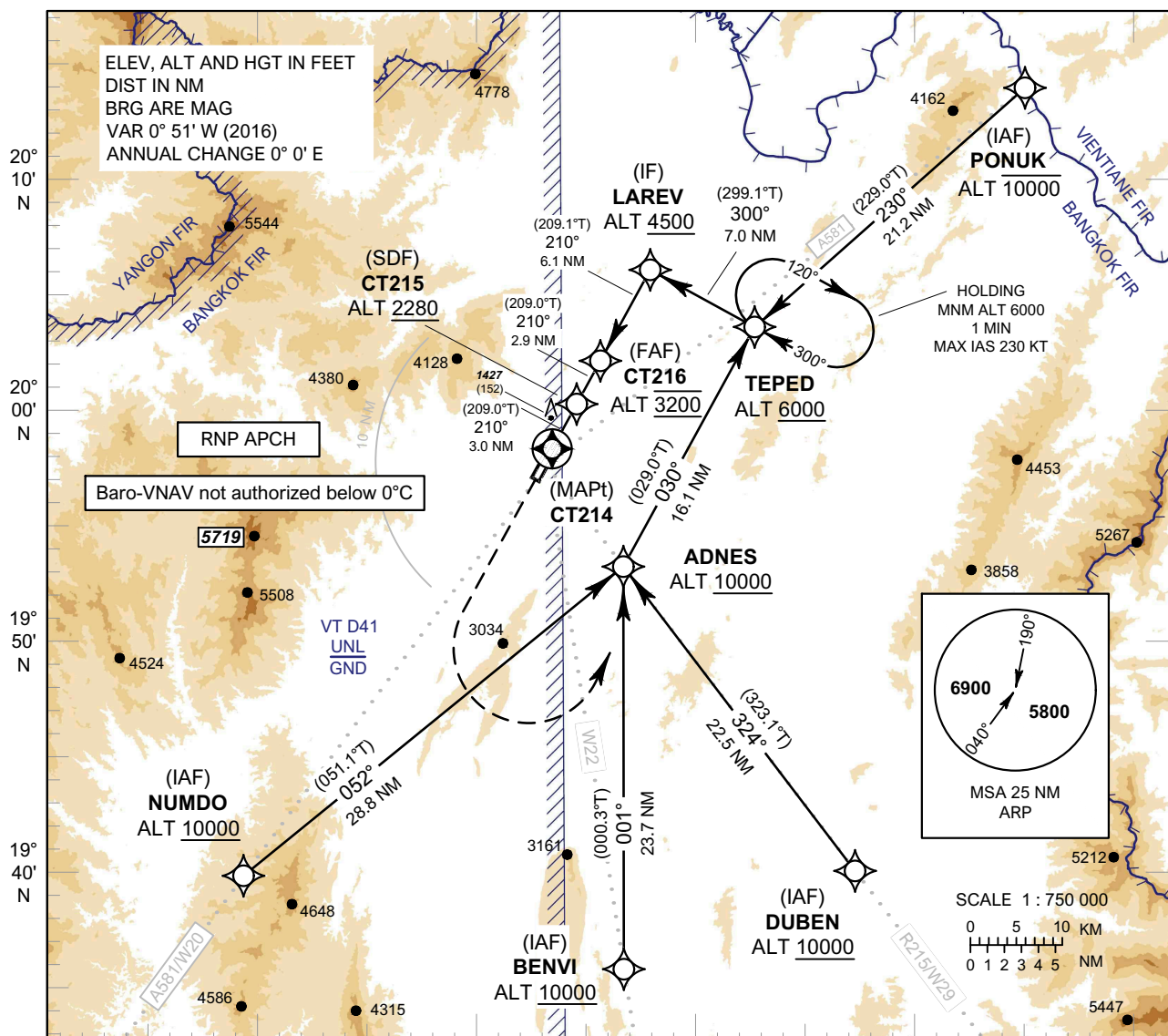
WAYPOINT LIST

RNP RWY03	
Waypoint Identifier	Coordinates
BENVI	19° 27' 06.52" N 099° 57' 41.02" E
CT033	19° 56' 25.75" N 099° 52' 33.51" E
CT034	19° 50' 06.49" N 099° 48' 51.27" E
CT035	19° 51' 48.57" N 099° 58' 20.63" E
DUBEN	19° 32' 49.42" N 100° 12' 06.83" E
EMTOD	20° 00' 35.03" N 100° 03' 29.95" E
MIKAV	19° 38' 58.56" N 099° 50' 49.39" E
NUMDO	19° 32' 43.43" N 099° 34' 01.89" E
PONUUK	20° 18' 58.10" N 100° 23' 05.80" E
REDIP	19° 42' 22.84" N 099° 44' 20.05" E

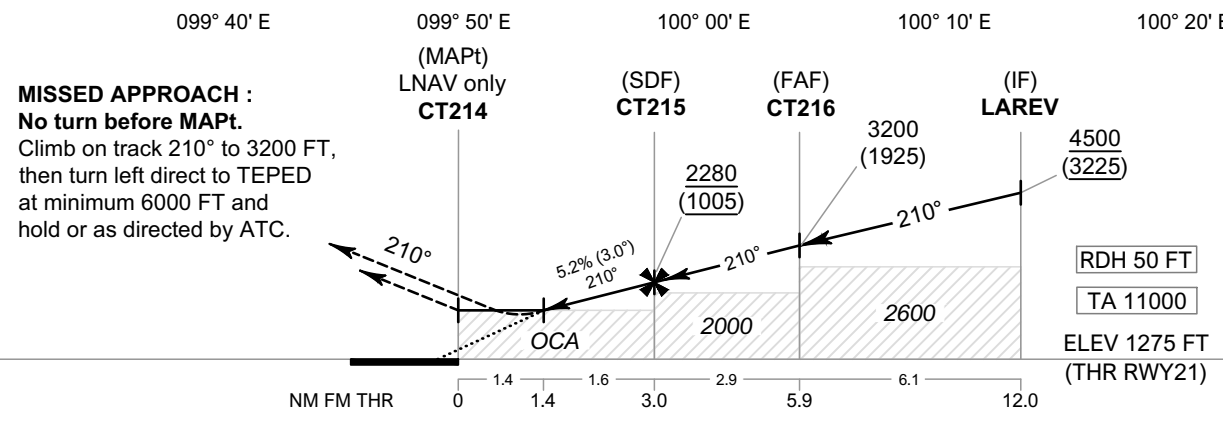
INSTRUMENT APPROACH CHART - ICAO
AERODROME ELEV 1280 FT
HEIGHTS RELATED TO THR RWY21 - ELEV 1275 FT

APP : 120.05 , 257.8
TWR : 118.4 , 236.6
ATIS : 127.85

CHIANG RAI / Mae Fah Luang-Chiang Rai Intl (VTCT)
RNP RWY21



CHANGE: REVISED CHART.



OCA/H	A	B	C	D	NM to NEXT WPT	1.4 NM	2 NM	3 NM	4 NM	5 NM	FAF	
LNAV / VNAV	1600 (325)				Altitude (Height)	1770 (475)	1955 (680)	2275 (1000)	2590 (1315)	2905 (1630)	3200 (1925)	
LNAV	1770 (475)				Ground Speed	knot	70	90	100	120	140	160
Circling (OCH AAL)	1900 (620)	3070 (1790)			Rate of Descent FAF-MAPt 5.2%	ft/min	369	474	527	632	737	843

INSTRUMENT AERODROME ELEV 1280 FT
APPROACH HEIGHTS RELATED TO
CHART - ICAO THR RWY21 - ELEV 1275 FT

CHIANG RAI /
Mae Fah Luang-Chiang Rai Intl (VTCT)
RNP RWY21

TABULAR DESCRIPTION

RNP RWY21											
Serial Number	Path Descriptor	Waypoint Identifier	Flyover	Course °M (°T)	Magnetic Variation	Distance (NM)	Turn Direction	Altitude (FT)	Speed (KT)	VPA/TCH	Navigation Specification
010	IF	(IAF) PONUK	-	-	+0.85	-	-	-10000	-	-	RNP APCH
020	TF	TEPRD	-	230° (229.0°)	+0.85	21.2	R	+6000	-	-	RNP APCH
030	TF	(IF) LAREV	-	300° (299.1°)	+0.85	7.0	-	+4500	-	-	RNP APCH
010	IF	(IAF) NUMDO	-	-	+0.85	-	-	+10000	-	-	RNP APCH
020	TF	ADNES	-	052° (051.1°)	+0.85	28.8	L	+10000	-	-	RNP APCH
030	TF	TEPED	-	030° (029.0°)	+0.85	16.1	L	+6000	-	-	RNP APCH
040	TF	(IF) LAREV	-	300° (299.1°)	+0.85	7.0	-	+4500	-	-	RNP APCH
010	IF	(IAF) BENVI	-	-	+0.85	-	-	+10000	-	-	RNP APCH
020	TF	ADNES	-	001° (000.3°)	+0.85	23.7	R	+10000	-	-	RNP APCH
030	TF	TEPED	-	030° (029.0°)	+0.85	16.1	-	+6000	-	-	RNP APCH
040	TF	(IF) LAREV	-	300° (299.1°)	+0.85	7.0	-	+4500	-	-	RNP APCH
010	IF	(IAF) DUBEN	-	-	+0.85	-	-	+10000	-	-	RNP APCH
020	TF	ADNES	-	324° (323.1°)	+0.85	22.5	R	+10000	-	-	RNP APCH
030	TF	TEPED	-	030° (029.0°)	+0.85	16.1	L	+6000	-	-	RNP APCH
040	TF	(IF) LAREV	-	300° (299.1°)	+0.85	7.0	-	+4500	-	-	RNP APCH
010	IF	(IF) LAREV	-	-	+0.85	-	-	+4500	-	-	RNP APCH
020	TF	(FAF) CT216	-	210° (209.1°)	+0.85	6.1	-	@3200	-	-	RNP APCH
030	TF	(SDF) CT215	-	210° (209.0°)	+0.85	2.9	-	+2280	-	-	RNP APCH
040	TF	(MAPt@THR21) CT214	Y	210° (209.0°)	+0.85	3.0	-	@1325	-	-3.0/50	RNP APCH
050	CA	-	-	210° (209.0°)	+0.85	-	-	+3200	-	-	RNP APCH
060	DF	TEPED	-	-	+0.85	-	L	+6000	-	-	RNP APCH
070	HM	TEPED	Y	300° (299.1°)	+0.85	1 minute	R	+6000	-230	-	RNP APCH

WAYPOINT LIST

RNP RWY21	
Waypoint Identifier	Coordinates
ADNES	19° 50' 52.39" N 099° 57' 47.65" E
BENVI	19° 27' 06.52" N 099° 57' 41.02" E
CT214	19° 57' 51.10" N 099° 53' 23.57" E
CT215	20° 00' 29.09" N 099° 54' 56.28" E
CT216	20° 03' 01.81" N 099° 56' 25.95" E
DUBEN	19° 32' 49.42" N 100° 12' 06.83" E
LAREV	20° 08' 22.99" N 099° 59' 34.73" E
NUMDO	19° 32' 43.43" N 099° 34' 01.89" E
PONUUK	20° 18' 58.10" N 100° 23' 05.80" E
TEPED	20° 04' 58.14" N 100° 06' 04.80" E