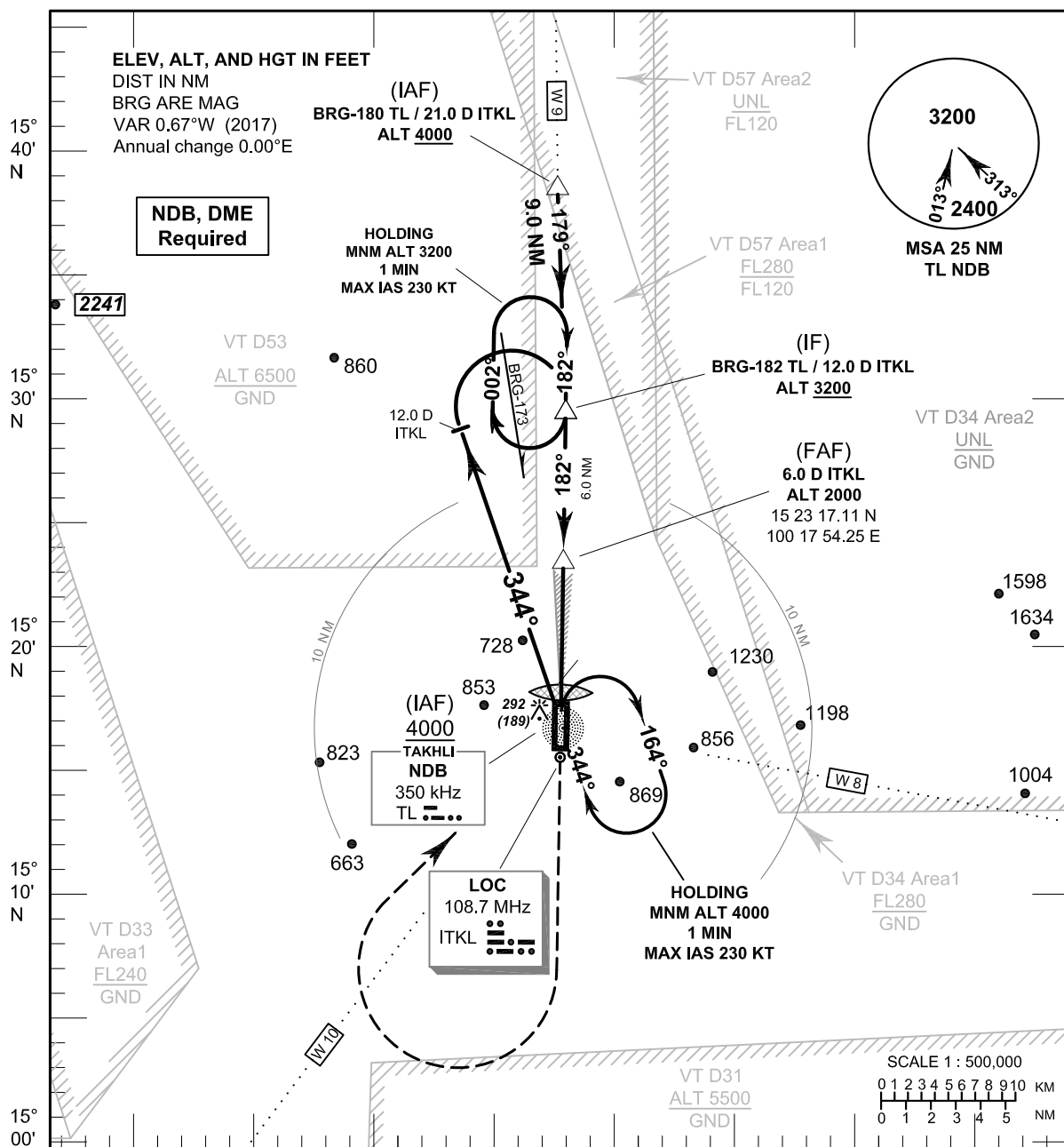


INSTRUMENT AERODROME ELEV 103 FT
APPROACH HEIGHTS RELATED TO
CHART-ICAO THR RWY18 - ELEV 103 FT

APP : 124.0, 325.0
 TWR : 133.25, 241.5
 GND : 121.75, 257.8

NAKHON SAWAN/Takhlī (VTPI)
ILS or LOC z RWY18

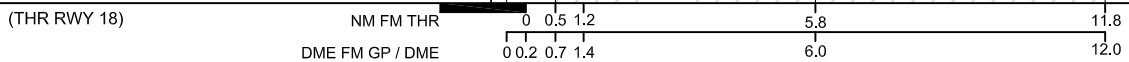


Missed Approach :
No turn before MAPt (for LOC only).
 Climb straight ahead to 3000 FT,
 then turn right to intercept inbound
 BRG-001 TL NDB, then proceed to
 IF at 3200 FT and hold
 or as directed by ATC.

ILS RDH 50 FT

ELEV 103 FT

(THR RWY 18)



OCA/H	C	D	GS out	Distance (ITKL)	1.4 D	2 D	3 D	4 D	5 D	FAF	
Straight-In approach CAT I	310 (207)			Altitude (Height)	540 (437)	720 (617)	1040 (937)	1355 (1252)	1670 (1567)	2000 (1897)	
				Ground Speed	knot	70	90	100	120	140	160
LOC Only	540 (437)			Rate of descent (3.0°)	(ft/min)	372	478	531	637	743	849
Circling (OCH AAL)	1380 (1277)										

CHANGE: VT D33. MORSE CODE OF RADIO NAVIGATION AIDS ADDED.