

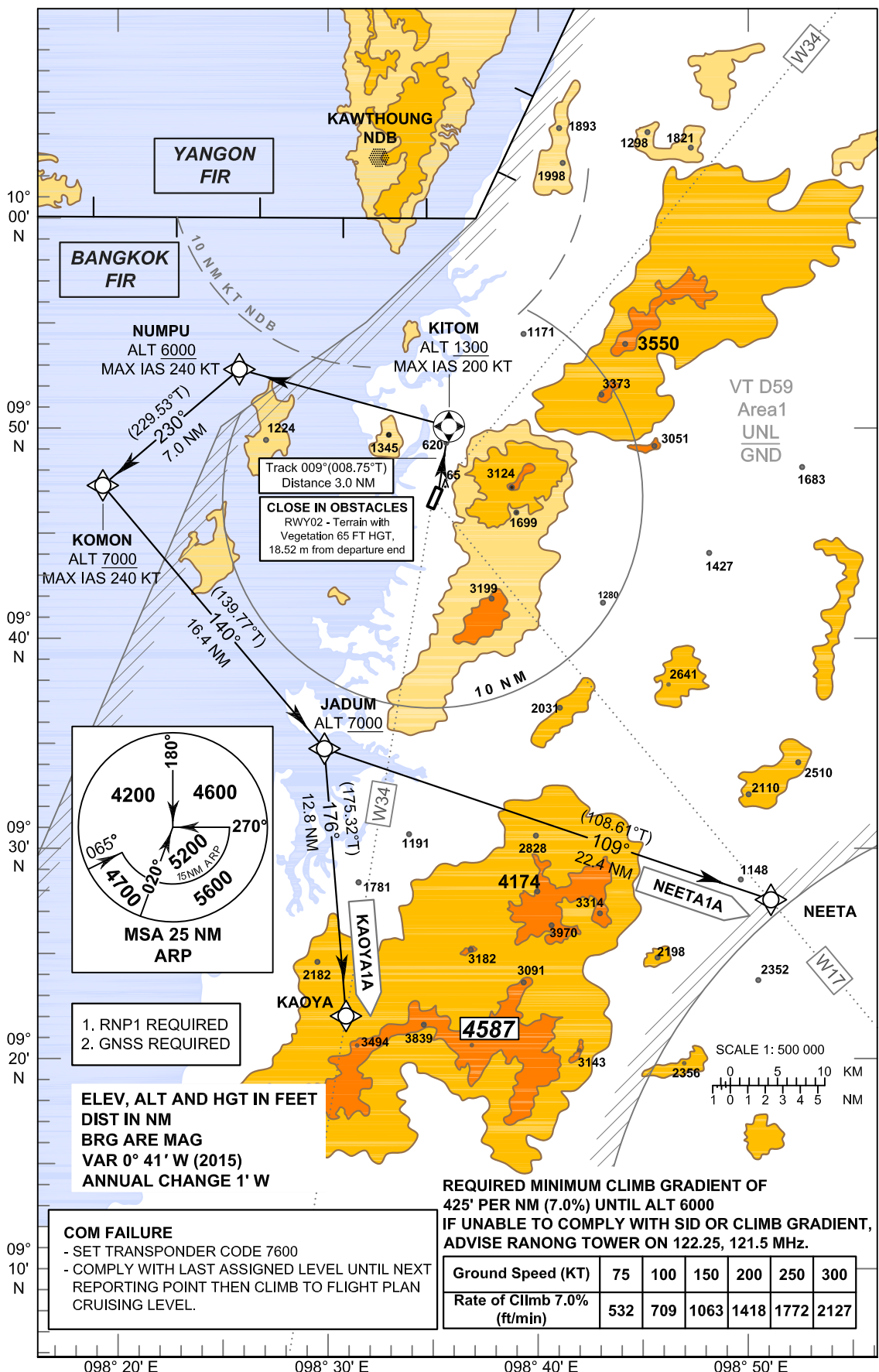
**STANDARD INSTRUMENT CHART -  
INSTRUMENT (SID) - ICAO**

TRANSITION ALTITUDE  
11000 FT

APP : 125.1  
TWR : 122.25 , 121.5

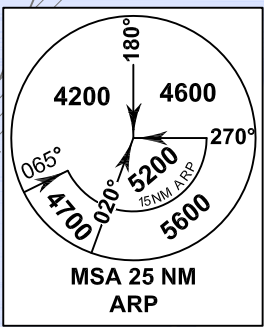
**RANONG / Ranong (VTSR)  
RNAV Rwy02**

**KAOYA1A, NEETA1A**



Track 009°(008.75°T)  
Distance 3.0 NM

**CLOSE IN OBSTACLES**  
RWY02 - Terrain with  
Vegetation 65 FT HGT,  
18.52 m from departure end



- 1. RNP1 REQUIRED
- 2. GNSS REQUIRED

**ELEV, ALT AND HGT IN FEET  
DIST IN NM  
BRG ARE MAG  
VAR 0° 41' W (2015)  
ANNUAL CHANGE 1' W**

**REQUIRED MINIMUM CLIMB GRADIENT OF  
425' PER NM (7.0%) UNTIL ALT 6000  
IF UNABLE TO COMPLY WITH SID OR CLIMB GRADIENT,  
ADVISE RANONG TOWER ON 122.25, 121.5 MHz.**

<b>Ground Speed (KT)</b>	75	100	150	200	250	300
<b>Rate of Climb 7.0% (ft/min)</b>	532	709	1063	1418	1772	2127

**COM FAILURE**

- SET TRANSPONDER CODE 7600
- COMPLY WITH LAST ASSIGNED LEVEL UNTIL NEXT REPORTING POINT THEN CLIMB TO FLIGHT PLAN CRUISING LEVEL.