

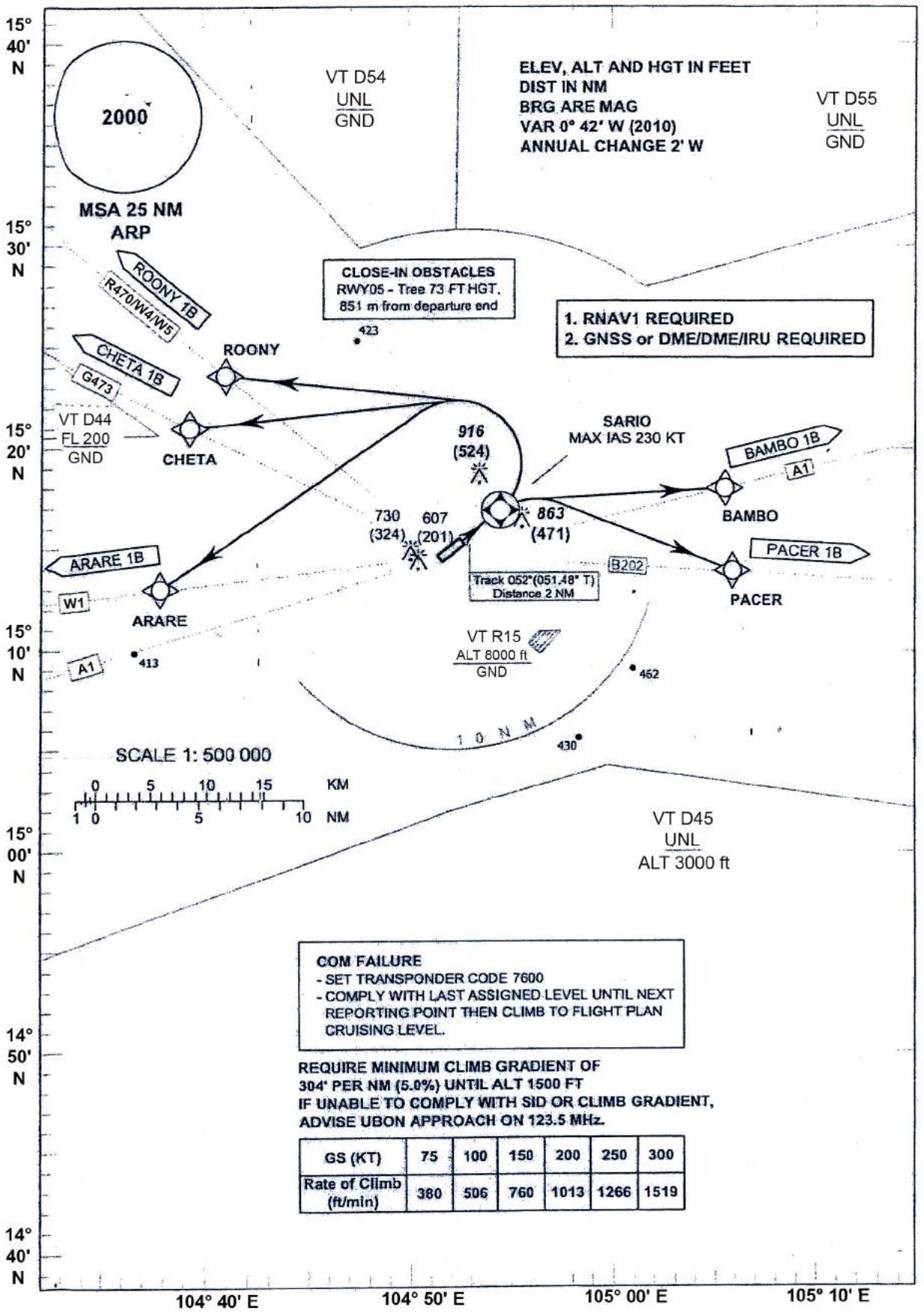
STANDARD DEPARTURE CHART
INSTRUMENT (SID) - ICAO

TRANSITION ALTITUDE
11000 FT

APP : 123.5 , 257.8
TWR : 119.9 , 274.5
GND : 121.9 , 275.8

UBON RATCHATHANI /
Ubon Ratchathani (VTUU)
RNAV RWY05

ARARE1B, BAMBO1B, CHETA1B, PACER1B, ROONY1B



ELEV, ALT AND HGT IN FEET
DIST IN NM
BRG ARE MAG
VAR 0° 42' W (2010)
ANNUAL CHANGE 2' W

VT D55
UNL
GND

CLOSE-IN OBSTACLES
RWY05 - Tree 73 FT HGT,
851 m from departure end

1. RNAV1 REQUIRED
2. GNSS or DME/DME/IRU REQUIRED

SARIO
MAX IAS 230 KT

Track 052°(051.48° T)
Distance 2 NM

VT R15
ALT 8000 ft
GND

COM FAILURE
- SET TRANSPONDER CODE 7600
- COMPLY WITH LAST ASSIGNED LEVEL UNTIL NEXT REPORTING POINT THEN CLIMB TO FLIGHT PLAN CRUISING LEVEL.

REQUIRE MINIMUM CLIMB GRADIENT OF
304' PER NM (5.0%) UNTIL ALT 1500 FT
IF UNABLE TO COMPLY WITH SID OR CLIMB GRADIENT,
ADVISE UBON APPROACH ON 123.5 MHz.

GS (KT)	75	100	150	200	250	300
Rate of Climb (ft/min)	380	506	760	1013	1266	1519