

**STANDARD DEPARTURE CHART -
INSTRUMENT (SID) - ICAO**

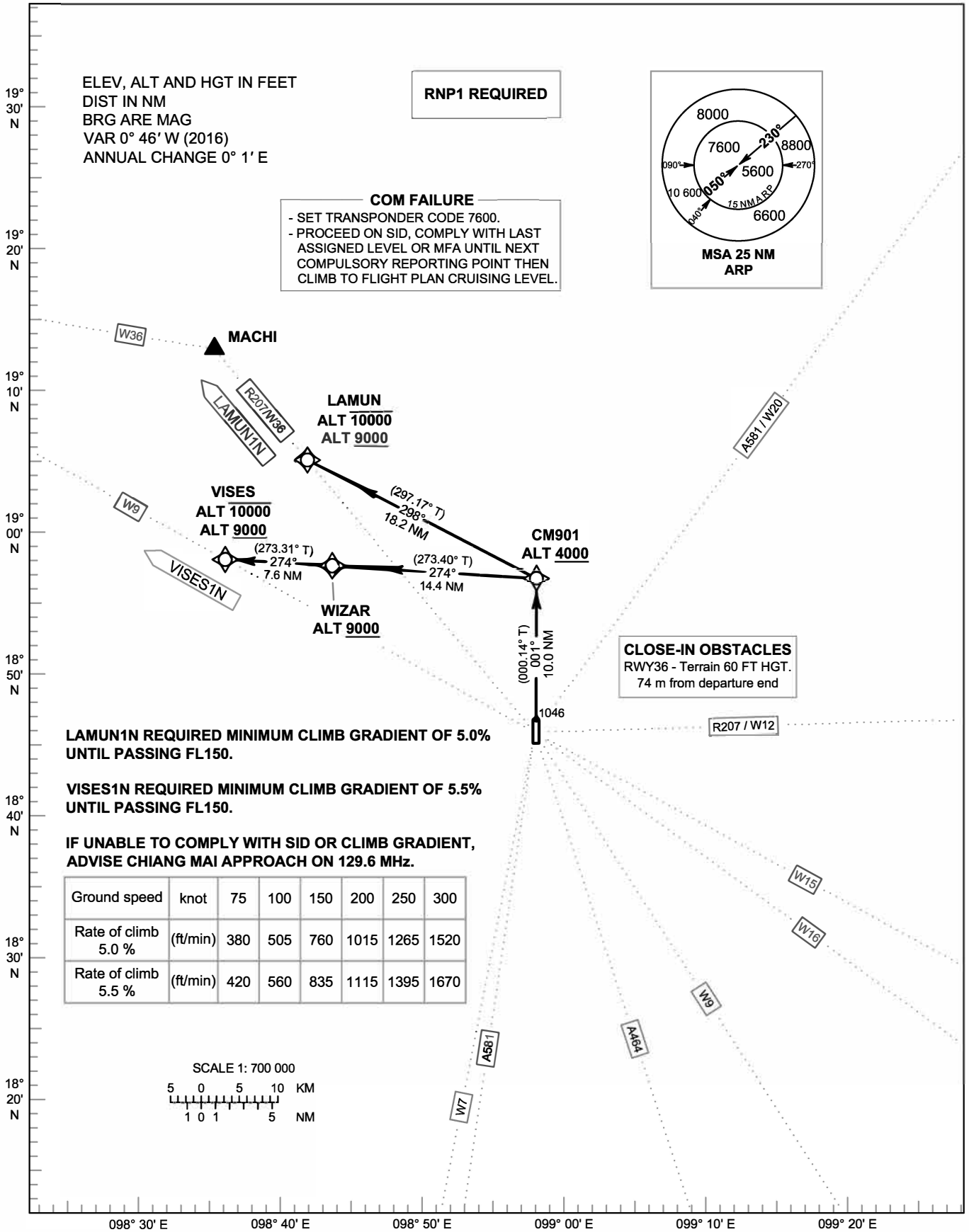
TRANSITION ALTITUDE
11000 FT

APP : 129.6 , 305.4
TWR : 118.1 , 236.6
GND : 121.9 , 275.8
ATIS : 127.2 , 301.5

**CHIANG MAI /
Chiang Mai Intl (VTCC)**

RNAV RWY36

LAMUN1N VISES1N

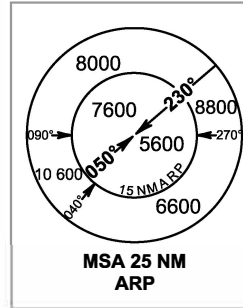


ELEV, ALT AND HGT IN FEET
DIST IN NM
BRG ARE MAG
VAR 0° 46' W (2016)
ANNUAL CHANGE 0° 1' E

RNP1 REQUIRED

COM FAILURE

- SET TRANSPONDER CODE 7600.
- PROCEED ON SID, COMPLY WITH LAST ASSIGNED LEVEL OR MFA UNTIL NEXT COMPULSORY REPORTING POINT THEN CLIMB TO FLIGHT PLAN CRUISING LEVEL.



CLOSE-IN OBSTACLES
RWY36 - Terrain 60 FT HGT.
74 m from departure end

LAMUN1N REQUIRED MINIMUM CLIMB GRADIENT OF 5.0% UNTIL PASSING FL150.

VISES1N REQUIRED MINIMUM CLIMB GRADIENT OF 5.5% UNTIL PASSING FL150.

IF UNABLE TO COMPLY WITH SID OR CLIMB GRADIENT, ADVISE CHIANG MAI APPROACH ON 129.6 MHz.

Ground speed	knot	75	100	150	200	250	300
Rate of climb 5.0 %	(ft/min)	380	505	760	1015	1265	1520
Rate of climb 5.5 %	(ft/min)	420	560	835	1115	1395	1670

