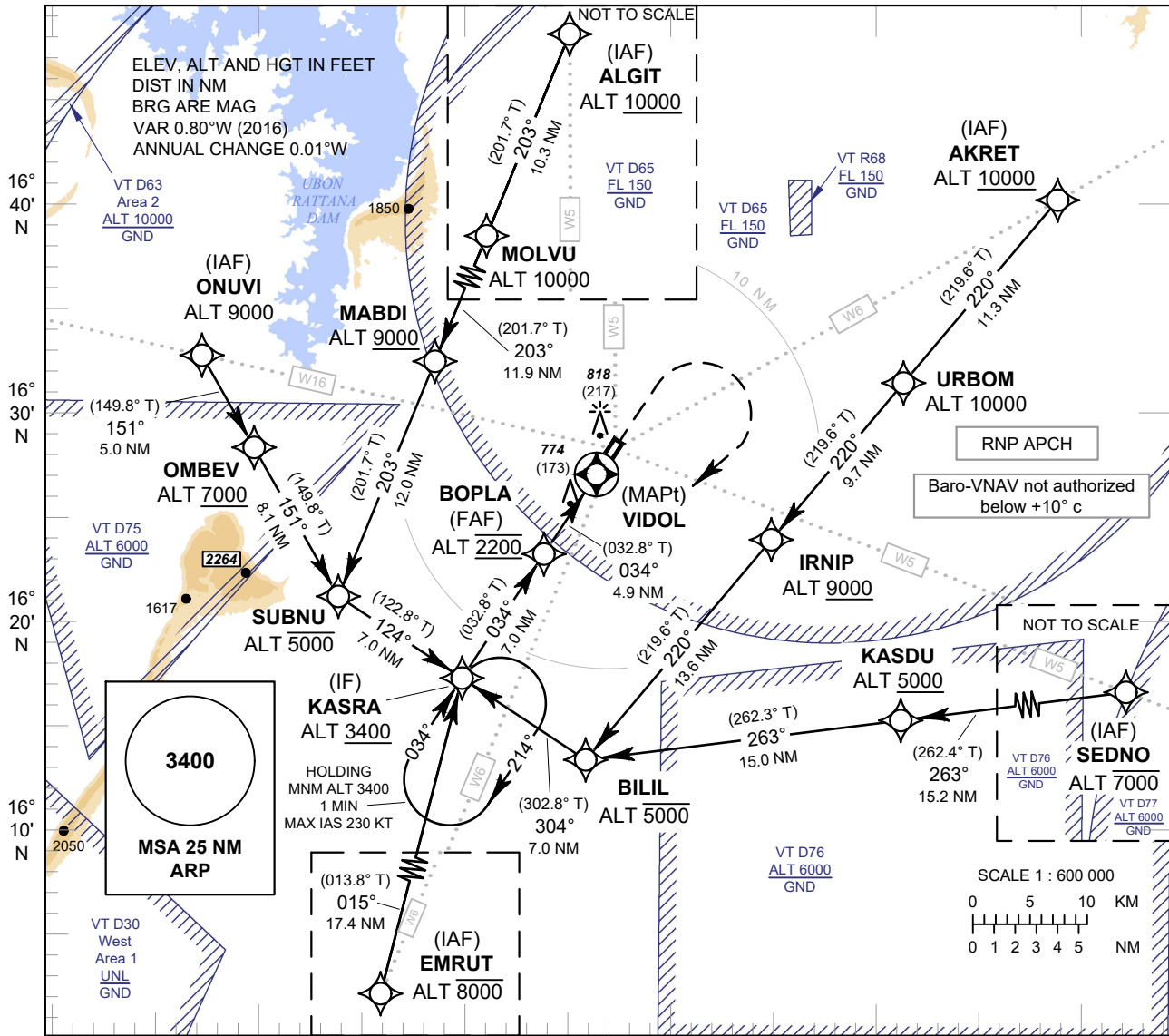


**INSTRUMENT
APPROACH
CHART - ICAO**

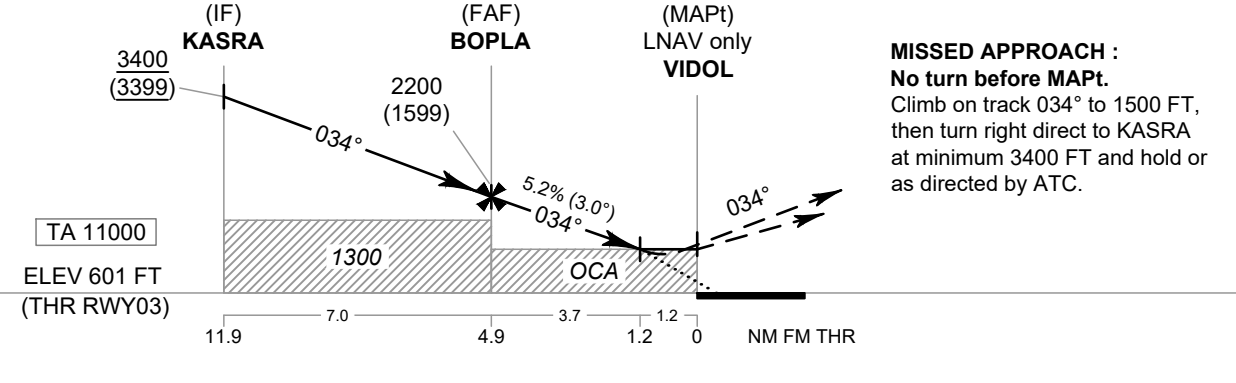
**AERODROME ELEV 670 FT
HEIGHTS RELATED TO
THR RWY03 - ELEV 601 FT**

APP : 123.4 , 240.0
TWR : 122.25 , 236.6
GND : 121.9
ATIS : 126.85

**KHON KAEN /
Khon Kaen (VTUK)
RNP RWY03**



102° 20' E 102° 30' E 102° 40' E 102° 50' E 103° 00' E 103° 10' E



OCA/H	A	B	C	D	NM to NEXT WPT	FAF	4 NM	3 NM	2 NM	1.2NM
LNAV / VNAV	960 (359)				Altitude (Height)	2200 (1599)	1915 (1314)	1600 (999)	1280 (679)	1030 (429)
LNAV	1090 (489)				Ground Speed	knot	70	90	100	120 140 160
Circling (OCH AAL)	1500 (830)				Rate of Descent 5.2%	ft/min	369	474	527	632 737 843

CHANGE: REVISED CHART.