

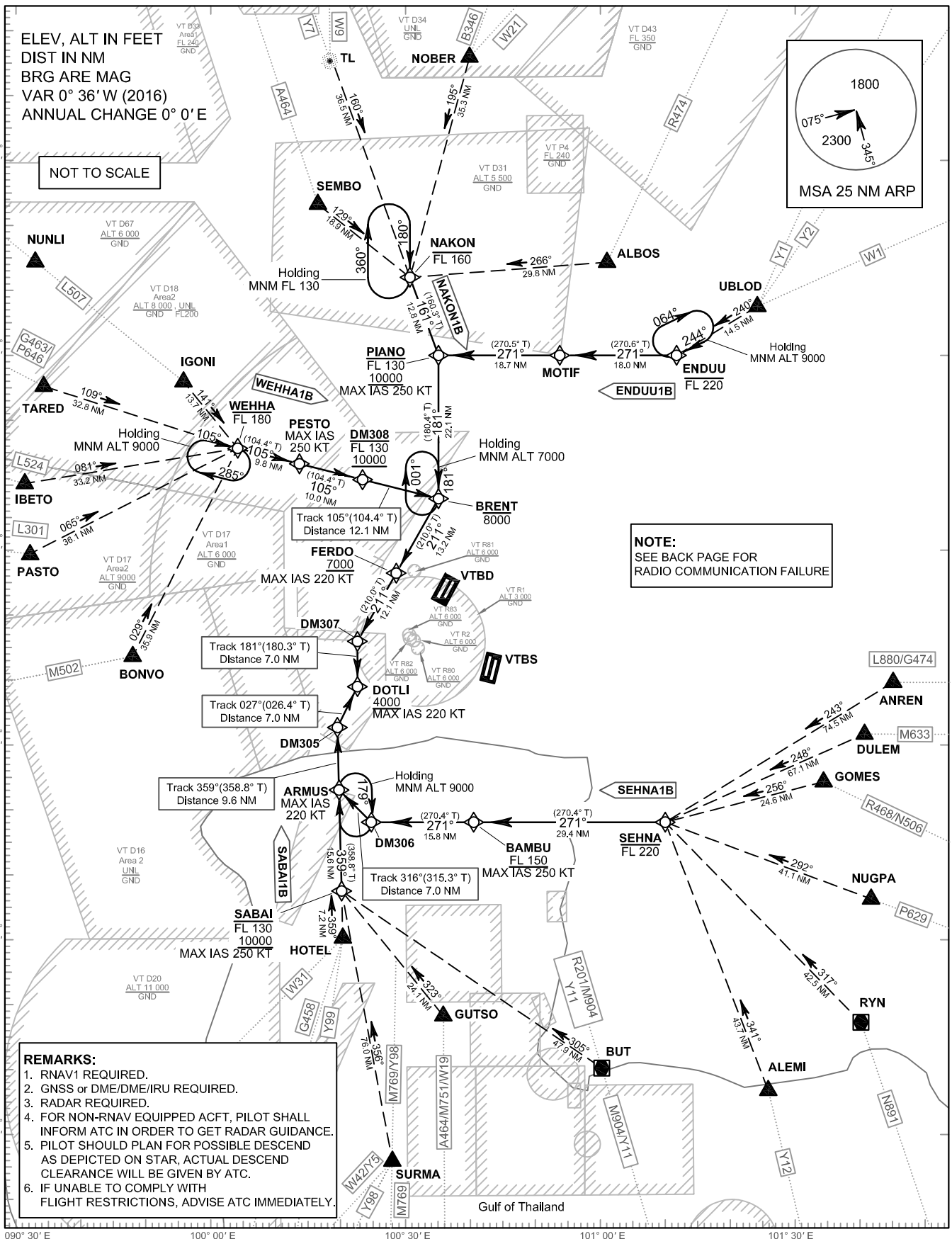
**STANDARD ARRIVAL CHART-
INSTRUMENT (STAR) - ICAO**

TRANSITION ALTITUDE 11000 FT
SPEED RESTRICTION MAX IAS 250 KT AT OR BELOW ALT 10000 FT UNLESS OTHERWISE AUTHORIZED BY ATC.

APP :	119.1, 262.5
:	119.4, 262.5
:	120.3, 262.5
:	128.95, 262.5
:	122.35, 262.5
:	124.35, 262.5
:	125.2, 262.5
DAR :	133.0, 262.5
TWR :	118.1, 236.6
ATIS :	126.4, 344.6

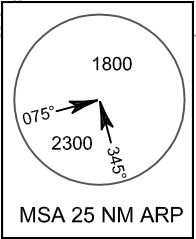
**BANGKOK/Don Mueang Intl (VTBD)
RNAV RWY03L/03R**

ENDUU1B NAKON1B
SABAI1B SEHNA1B WEHHA1B



ELEV, ALT IN FEET
DIST IN NM
BRG ARE MAG
VAR 0° 36' W (2016)
ANNUAL CHANGE 0° 0' E

NOT TO SCALE



NOTE:
SEE BACK PAGE FOR
RADIO COMMUNICATION FAILURE

- REMARKS:**
1. RNAV1 REQUIRED.
 2. GNSS or DME/DME/IRU REQUIRED.
 3. RADAR REQUIRED.
 4. FOR NON-RNAV EQUIPPED ACFT, PILOT SHALL INFORM ATC IN ORDER TO GET RADAR GUIDANCE.
 5. PILOT SHOULD PLAN FOR POSSIBLE DESCEND AS DEPICTED ON STAR, ACTUAL DESCEND CLEARANCE WILL BE GIVEN BY ATC.
 6. IF UNABLE TO COMPLY WITH FLIGHT RESTRICTIONS, ADVISE ATC IMMEDIATELY.

CHANGE: DOTLI ADDED. CANCEL DM301, DM302, DM303.