

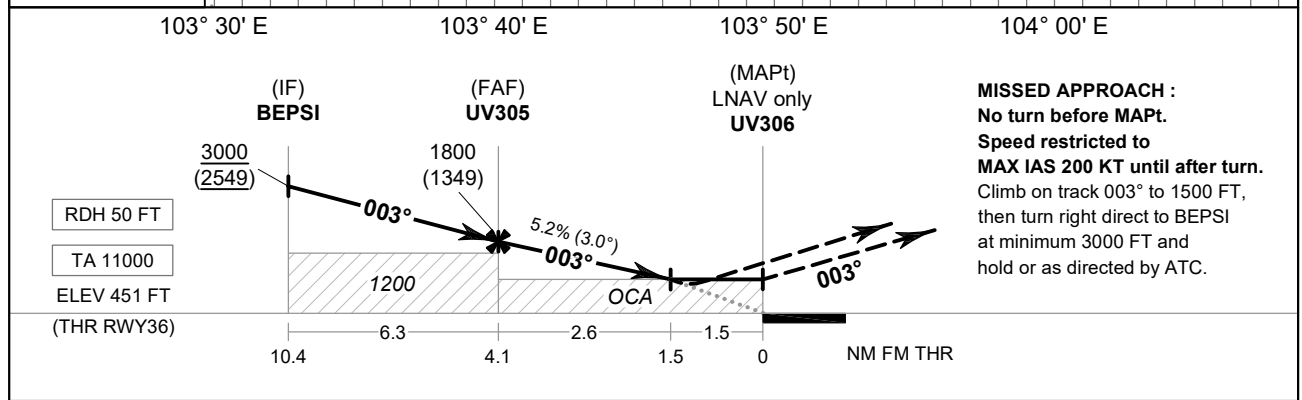
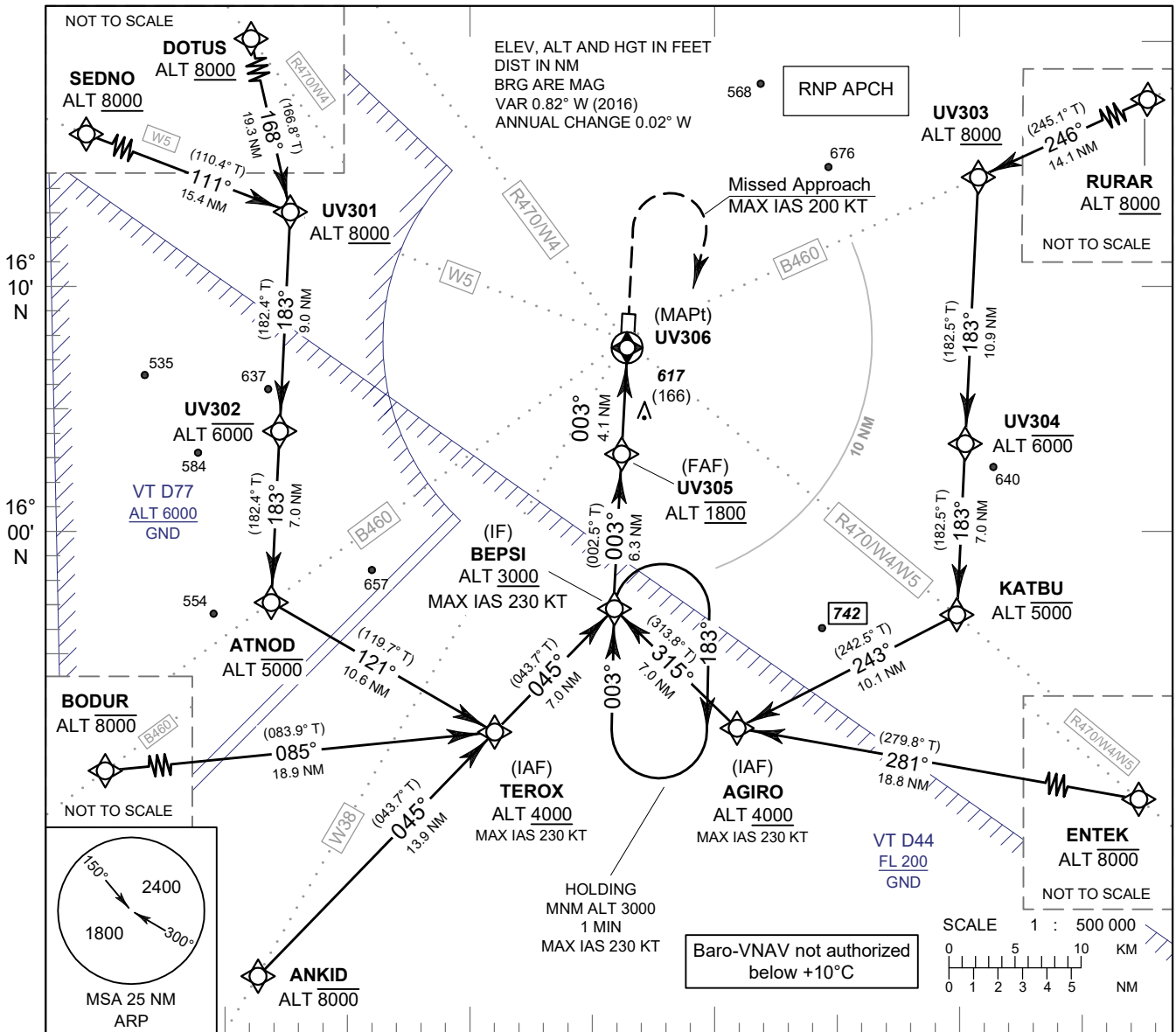
**INSTRUMENT
APPROACH
CHART - ICAO**

**AERODROME ELEV 451 FT
HEIGHTS RELATED TO
THR RWY36 - ELEV 451 FT**

APP : 125.4 MHz
TWR : 119.75 , 236.6 MHz
ATIS : 319 kHz

ROI ET / Roi Et (VTUV)

RNP RWY36



MISSED APPROACH :
No turn before MAPt.
Speed restricted to
MAX IAS 200 KT until after turn.
Climb on track 003° to 1500 FT,
then turn right direct to BEPSI
at minimum 3000 FT and
hold or as directed by ATC.

| OCA/H | A | B | C | D | NM to NEXT WPT | FAF | 4 NM | 3 NM | 2 NM | 1.5 NM | | | |
|--------------------|------------|---|---|---|-------------------|---------------|-------------|------------|------------|-----------|-----|-----|-----|
| LNVA/VNAV | 800 (349) | | | | Altitude (Height) | 1800 (1349) | 1765 (1314) | 1450 (999) | 1135 (684) | 970 (519) | | | |
| LNVA | 970 (519) | | | | Ground Speed | knot | 70 | 90 | 100 | 120 | 140 | 160 | |
| Circling (OCH AAL) | 1200 (749) | | | | Rate of Descent | FAF-MAPt 5.2% | ft/min | 369 | 474 | 527 | 632 | 737 | 843 |

CHANGE: CHART TITLE.