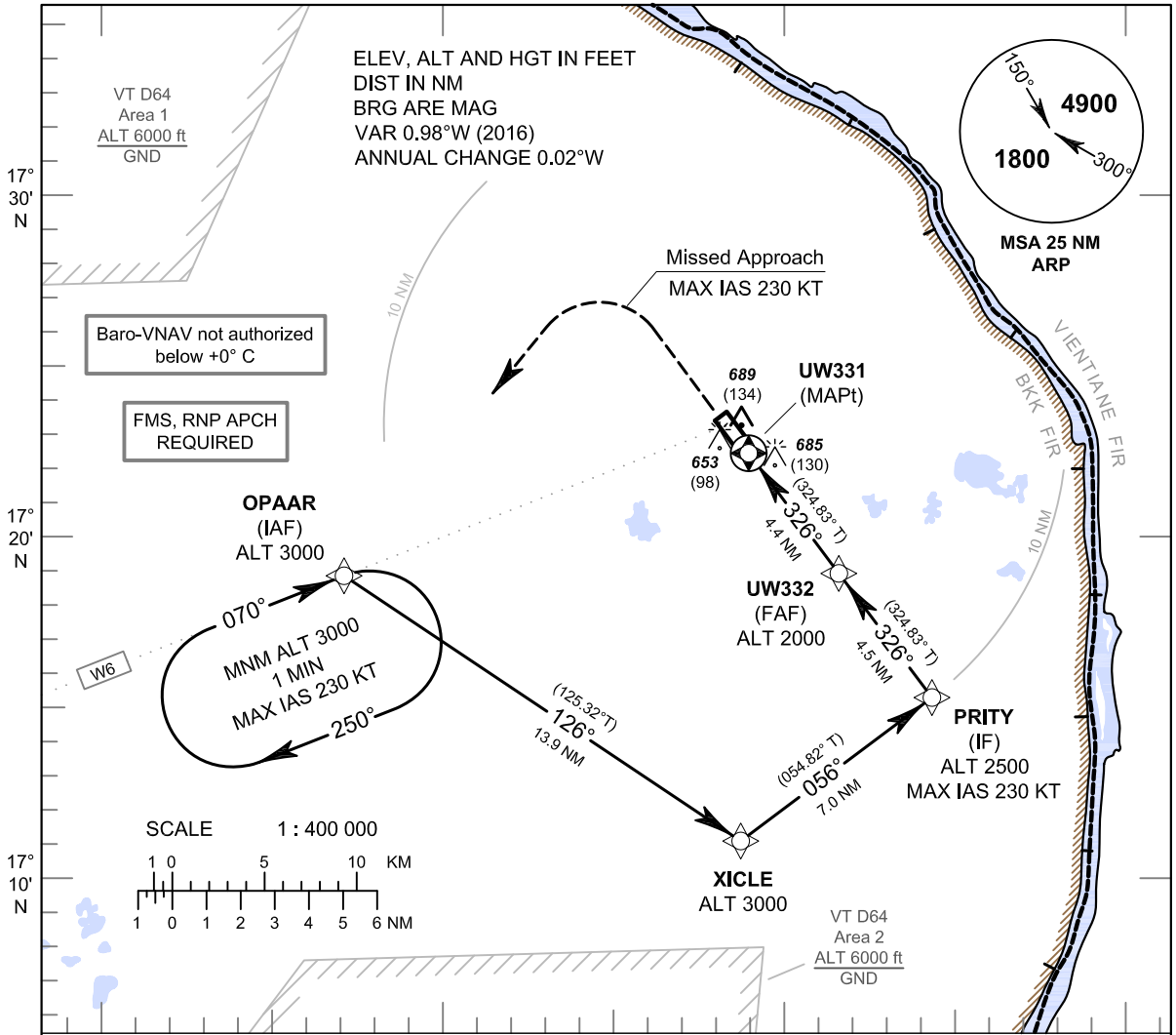


**INSTRUMENT  
APPROACH  
CHART - ICAO**

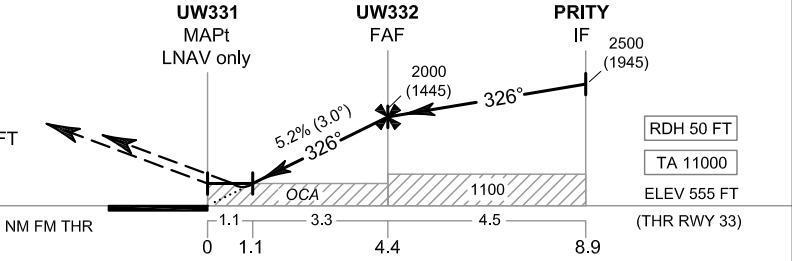
**AERODROME ELEV 587 FT**  
HEIGHTS RELATED TO  
THR RWY33 - ELEV 555 FT

APP : 123.35 , 284.0  
TWR : 122.5  
GND : 121.9

**NAKHON PHANOM / Nakhon Phanom  
(VTUW)**  
RNP RWY33



**MISSED APPROACH :**  
No turn before MAPt.  
Speed restricted to  
MAX IAS 230 KT until after turn.  
Climb on track 326° to 2400 FT  
then turn left direct to OPAAR at 3000 FT  
and hold or as directed by ATC.



| OCA/H              | A          | B          | C | D | NM to NEXT WPT         | 1.1 NM    | 2 NM       | 3 NM       | 4 NM        | FAF         |     |     |
|--------------------|------------|------------|---|---|------------------------|-----------|------------|------------|-------------|-------------|-----|-----|
| LNAV/VNAV          | 850 (295)  |            |   |   | Altitude (Height)      | 950 (395) | 1235 (680) | 1550 (995) | 1870 (1315) | 2000 (1445) |     |     |
| LNAV               | 950 (395)  |            |   |   | Ground speed           | knot      | 70         | 90         | 100         | 120         | 140 | 160 |
| Circling (OCH AAL) | 1100 (513) | 1300 (713) |   |   | Rate of descent (5.2%) | (ft/min)  | 369        | 474        | 527         | 632         | 737 | 843 |

CHANGE: CHART TITLE.