

**STANDARD ARRIVAL CHART-
INSTRUMENT (STAR) - ICAO**

TRANSITION ALTITUDE
11000 FT

SPEED RESTRICTION
MAX IAS 250 KT AT OR
BELOW ALT 10000 FT
UNLESS OTHERWISE
AUTHORIZED BY ATC.

APP : 119.1, 262.5
: 120.3, 262.5
: 121.7, 262.5
: 122.35, 262.5
: 124.35, 262.5
: 125.2, 262.5

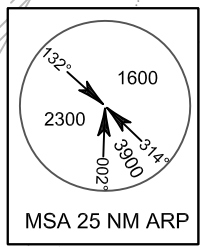
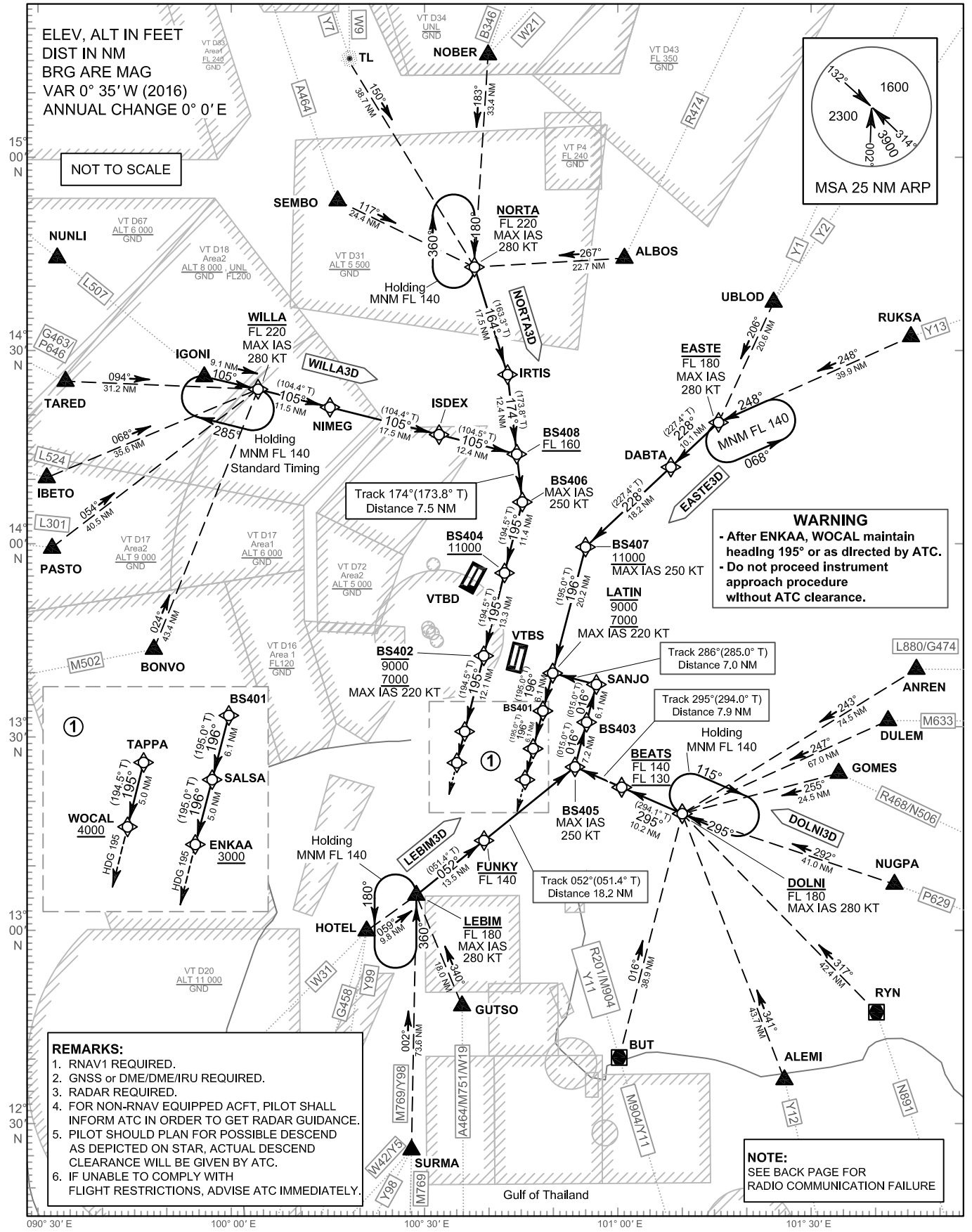
ARR : 121.1
: 126.3

TWR : 118.2, 274.5
: 119.0

ATIS : 133.6, 278.6

**BANGKOK/Suvarnabhumi Intl (VTBS)
RNAV RWY01L/01R**

DOLNI3D EASTE3D
LEBIM3D NORTA3D WILLA3D



WARNING

- After ENKAA, WOCAL maintain heading 195° or as directed by ATC.
- Do not proceed instrument approach procedure without ATC clearance.

REMARKS:

1. RNAV1 REQUIRED.
2. GNSS or DME/DME/IRU REQUIRED.
3. RADAR REQUIRED.
4. FOR NON-RNAV EQUIPPED ACFT, PILOT SHALL INFORM ATC IN ORDER TO GET RADAR GUIDANCE.
5. PILOT SHOULD PLAN FOR POSSIBLE DESCEND AS DEPICTED ON STAR, ACTUAL DESCEND CLEARANCE WILL BE GIVEN BY ATC.
6. IF UNABLE TO COMPLY WITH FLIGHT RESTRICTIONS, ADVISE ATC IMMEDIATELY.

NOTE:
SEE BACK PAGE FOR RADIO COMMUNICATION FAILURE

CHANGE: L880 M633 N506 AND P629 ADDED. ANREN DULEM AND NUGPA TRANSITION WAYPOINT ADDED. CANCEL BATOK TRANSITION WAYPOINT.