

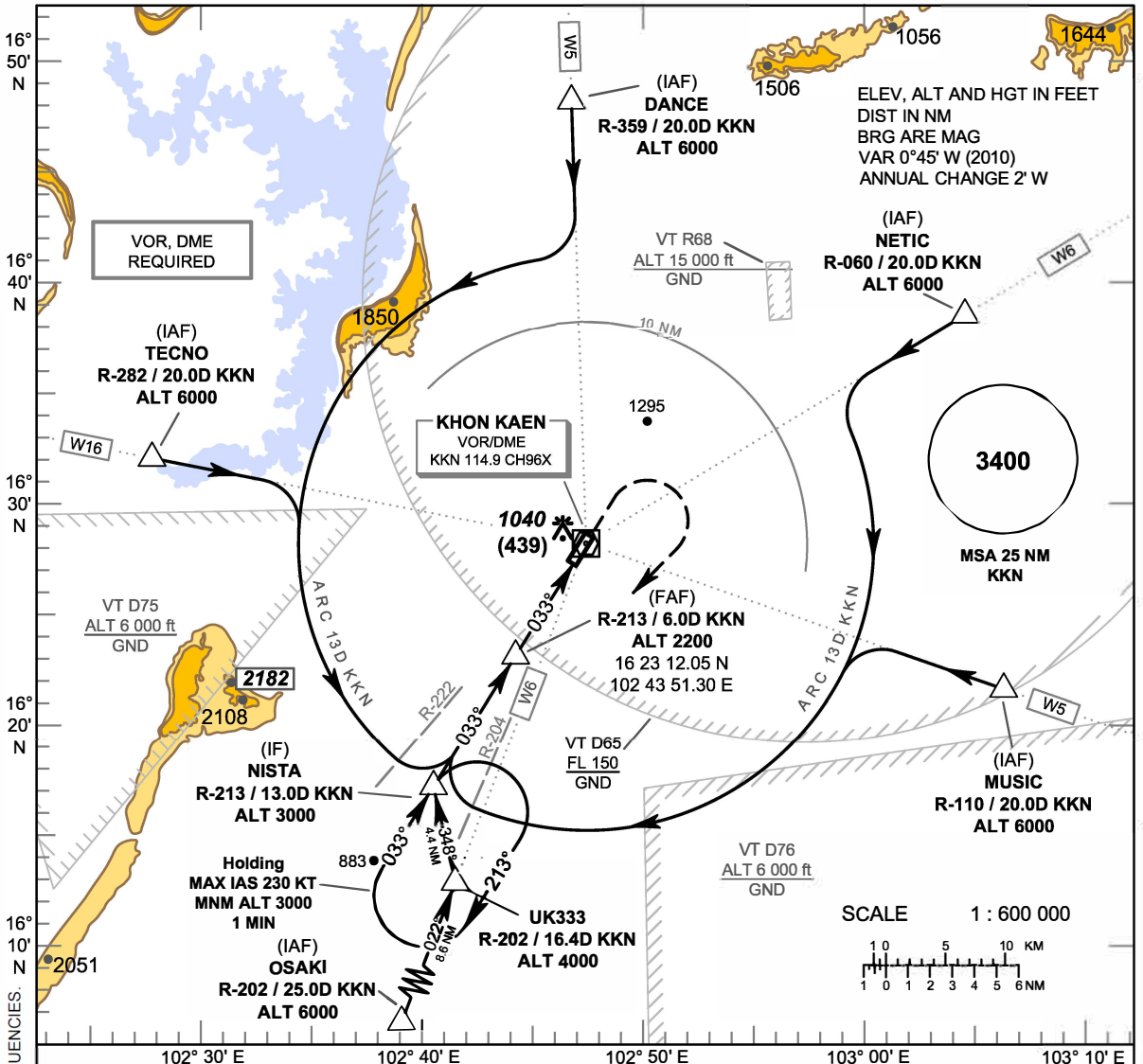
**INSTRUMENT APPROACH CHART - ICAO**

**AERODROME ELEV 670 FT**  
**HEIGHTS RELATED TO THR RWY 03 - ELEV 601 FT**

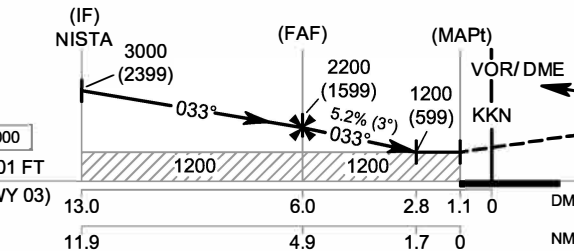
APP : 123.4, 240.0  
 TWR : 122.25, 236.6  
 GND : 121.9  
 ATIS : 126.85

**KHON KAEN / Khon Kaen (VTUK)**

**VOR z RWY 03**



CHANGE : ADDED GND FREQUENCIES. ADDED ATIS FREQUENCIES.



**MISSED APPROACH :**  
**No turn before MAPt.**  
 Climb straight ahead to 1500 (899) FT then turn right to intercept R-213 KKN VOR then proceed to IF at 3000 (2399) FT and hold or as directed by ATC.

OCA/H	A	B	C	D	Distance to KKN	FAF	5 D	4 D	3 D	2.8 D		
Straight-in Approach	1200 (599)				Altitude (Height)	2200 (1599)	1880 (1279)	1570 (969)	1250 (649)	1200 (599)		
					Ground speed (GS)	Knot	100	120	140	160	180	200
Circling (OCH AAL)	1600 (930)				Rate of descent	(ft/min)	530	630	740	845	950	1055