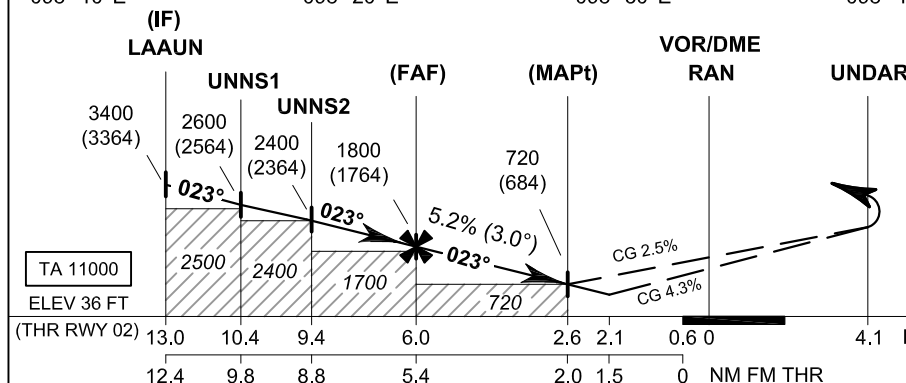
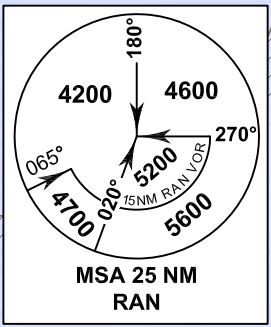
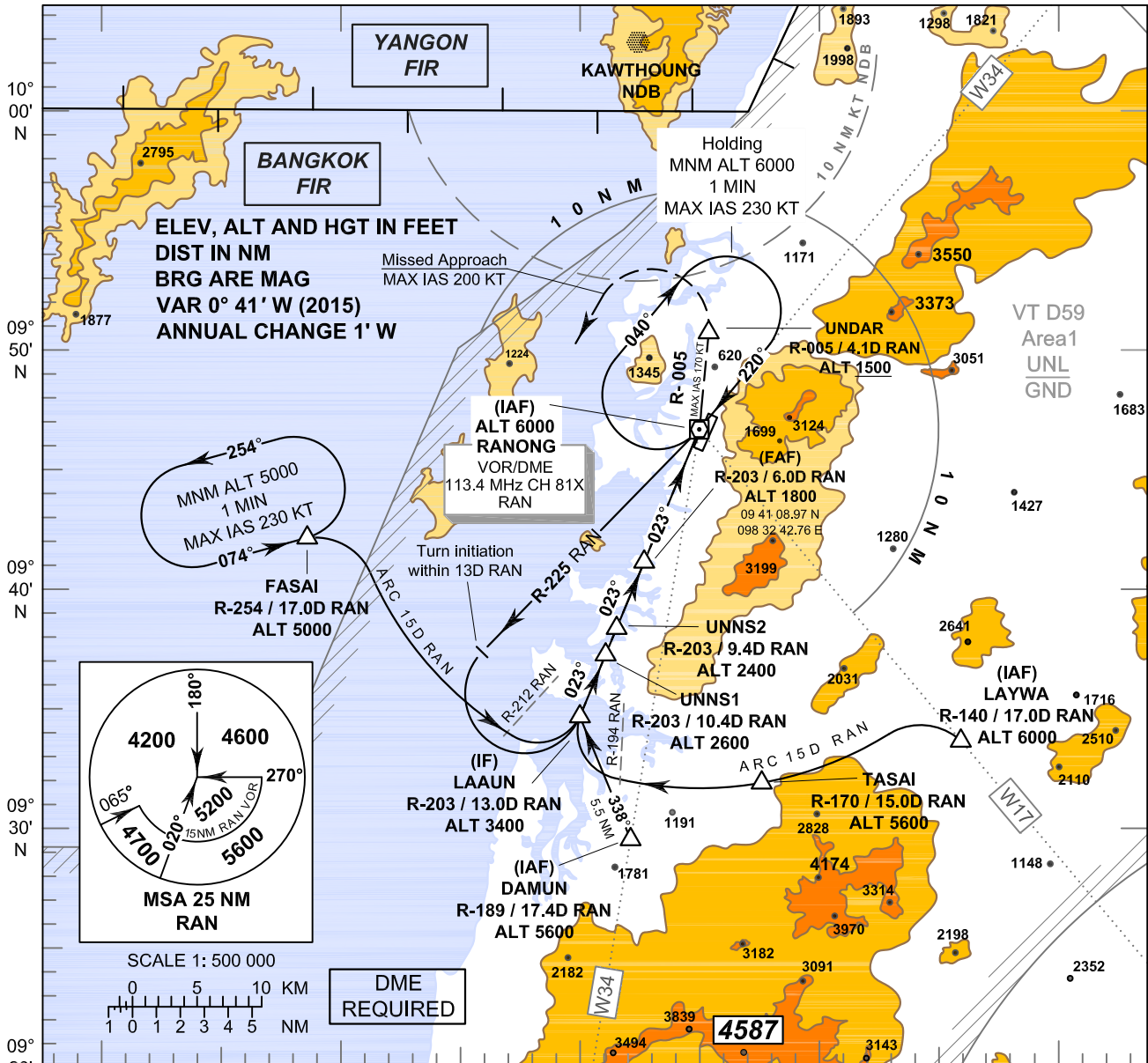


INSTRUMENT APPROACH CHART - ICAO

AERODROME ELEV 57 FT
HEIGHTS RELATED TO THR RWY 02 - ELEV 36 FT

APP : 125.1
 TWR : 122.25 , 236.6
 ATIS : 126.475

RANONG / Ranong (VTSR)
VOR RWY02



MISSED APPROACH:
 No turn before MAPt.
 Speed restricted to MAX IAS 170 KT until UNDAR and 200 KT until after turn.
 At MAPt, turn left climb to intercept R-005 RAN VOR until UNDAR at or above 1500 FT.
 After UNDAR, turn left to intercept outbound R-254 RAN VOR, then proceed to FASAI at 5000 FT and hold or as directed by ATC.

OCA/H	A	B	C	D	Distance (RAN)	FAF	5 D	4 D	3 D	2.6 D		
Straight-in Approach	720 (684)				Altitude (Height)	1800 (1764)	1475 (1439)	1160 (1124)	845 (809)	720 (684)		
					Ground speed	knot	70	90	100	120	140	160
Circling (OCH AAL)	Not Authorized				Rate of descent	(ft/min)	369	474	527	632	737	843

NOTE : OCA (OCH): 560 (524) FT; MAPt at 2.1 D FM VOR/DME can be achieved for all aircraft categories which can commence a missed approach climb gradient of 4.3% (261 FT/NM) until passing UNDAR.

CHANGE : TWR FREQUENCY. ATIS FREQUENCY ADDED.