

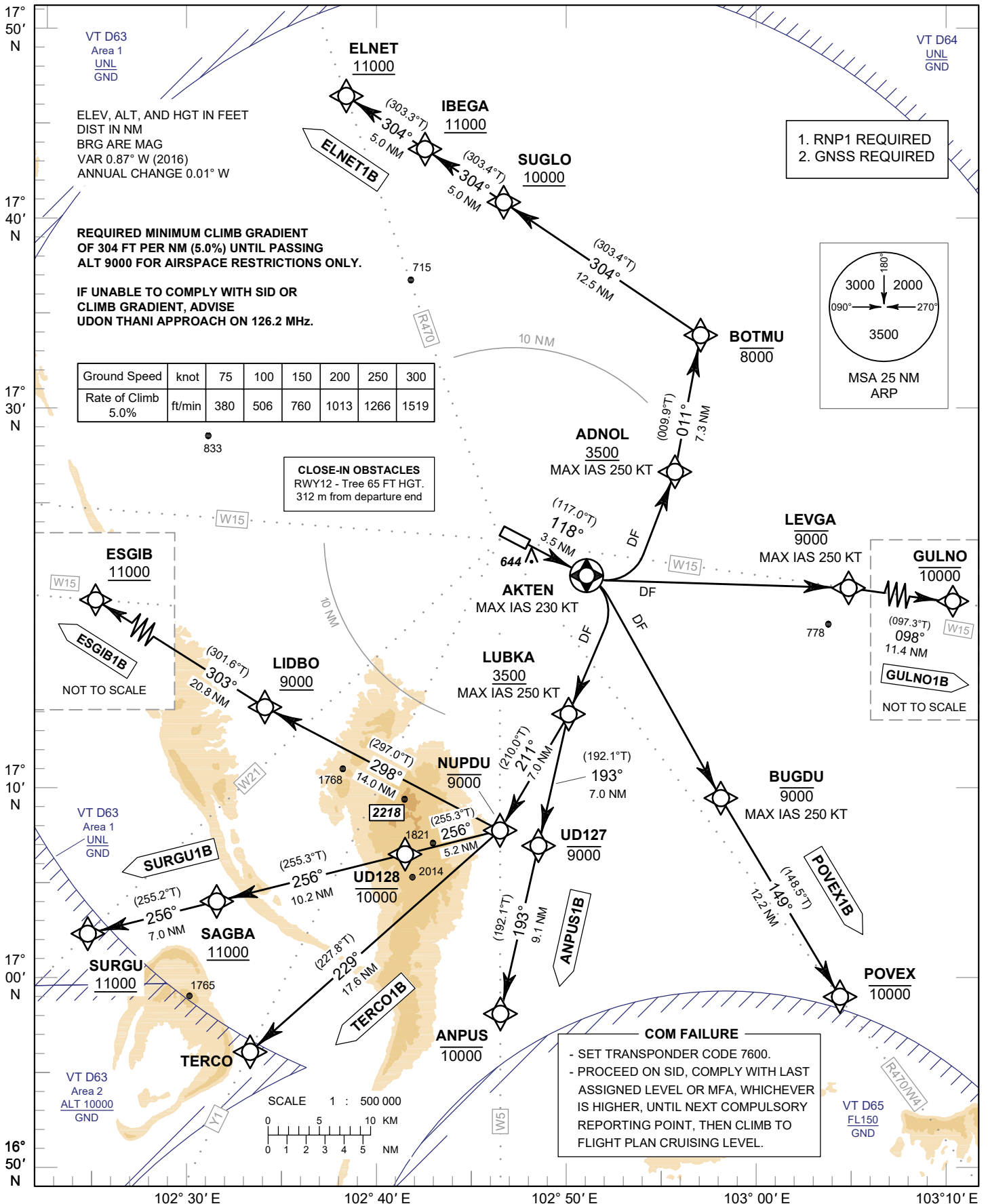
**STANDARD DEPARTURE CHART -  
INSTRUMENT (SID) - ICAO**

TRANSITION ALTITUDE  
11000 FT

APP : 126.2, 265.9  
TWR : 122.5, 355.4  
GND : 121.9, 275.8  
ATIS : 127.6

**UDON THANI / Udon Thani (VTUD)  
RNAV RWY12**

ANPUS1B ELNET1B ESGIB1B  
GULNO1B POVEX1B SURGU1B TERCO1B



CHANGE: NEW CHART.