

**STANDARD DEPARTURE CHART - INSTRUMENT (SID) - ICAO**

TRANSITION ALTITUDE 11000 FT
<b>SPEED RESTRICTION</b> MAX IAS 250 KT AT OR BELOW ALT 10000 FT UNLESS OTHERWISE AUTHORIZED BY ATC.

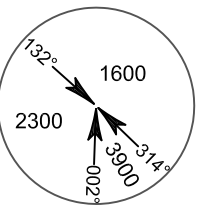
APP	: 119.1, 262.5
	: 120.3, 262.5
	: 128.95, 262.5
	: 122.35, 262.5
	: 124.35, 262.5
	: 125.2, 262.5
ARR	: 121.1
	: 126.3
TWR	: 118.2, 274.5
	: 119.0
DEP ATIS	: 127.65

**BANGKOK/Suvarnabhumi Intl (VTBS)  
RNAV RWY19L**

DOSBU3J GORSI3J HHN3J  
KASNI3J KIGOB3J REGOS3J  
RYN3J SABIS3J UKERA3J

ELEV, ALT IN FEET  
DIST IN NM  
BRG ARE MAG  
VAR 0° 35' W (2016)  
ANNUAL CHANGE 0° 0' E

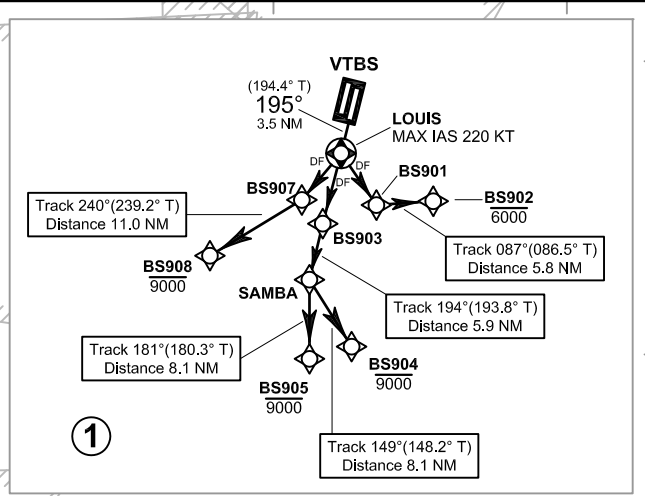
**INITIAL CLIMB CLEARANCE 6000 FT OR AS DIRECTED BY ATC.**



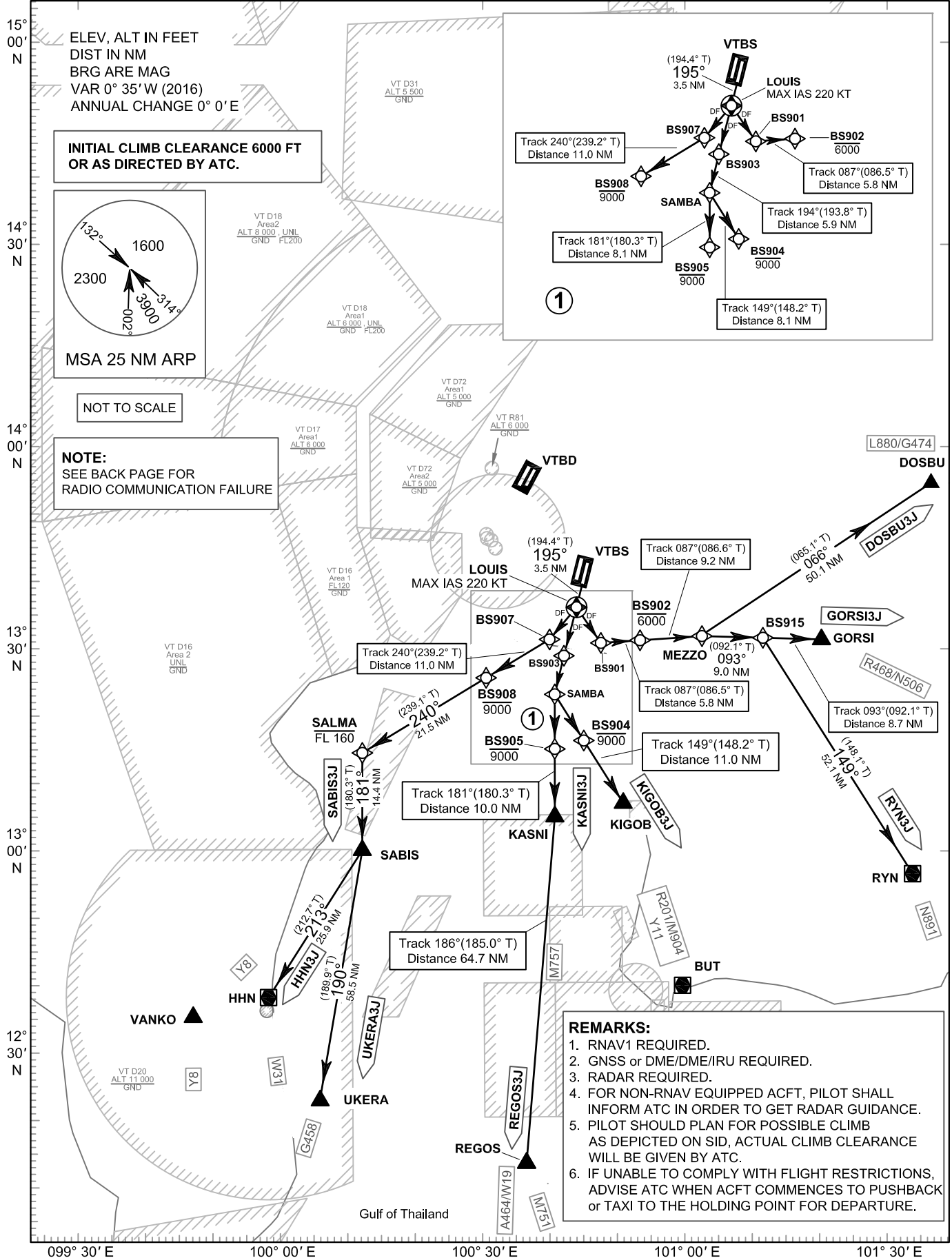
MSA 25 NM ARP

NOT TO SCALE

**NOTE:**  
SEE BACK PAGE FOR RADIO COMMUNICATION FAILURE



CHANGE: APP FREQ, DEP ATIS ADDED.



- REMARKS:**
1. RNAV1 REQUIRED.
  2. GNSS or DME/DME/IRU REQUIRED.
  3. RADAR REQUIRED.
  4. FOR NON-RNAV EQUIPPED ACFT, PILOT SHALL INFORM ATC IN ORDER TO GET RADAR GUIDANCE.
  5. PILOT SHOULD PLAN FOR POSSIBLE CLIMB AS DEPICTED ON SID, ACTUAL CLIMB CLEARANCE WILL BE GIVEN BY ATC.
  6. IF UNABLE TO COMPLY WITH FLIGHT RESTRICTIONS, ADVISE ATC WHEN ACFT COMMENCES TO PUSHBACK OR TAXI TO THE HOLDING POINT FOR DEPARTURE.