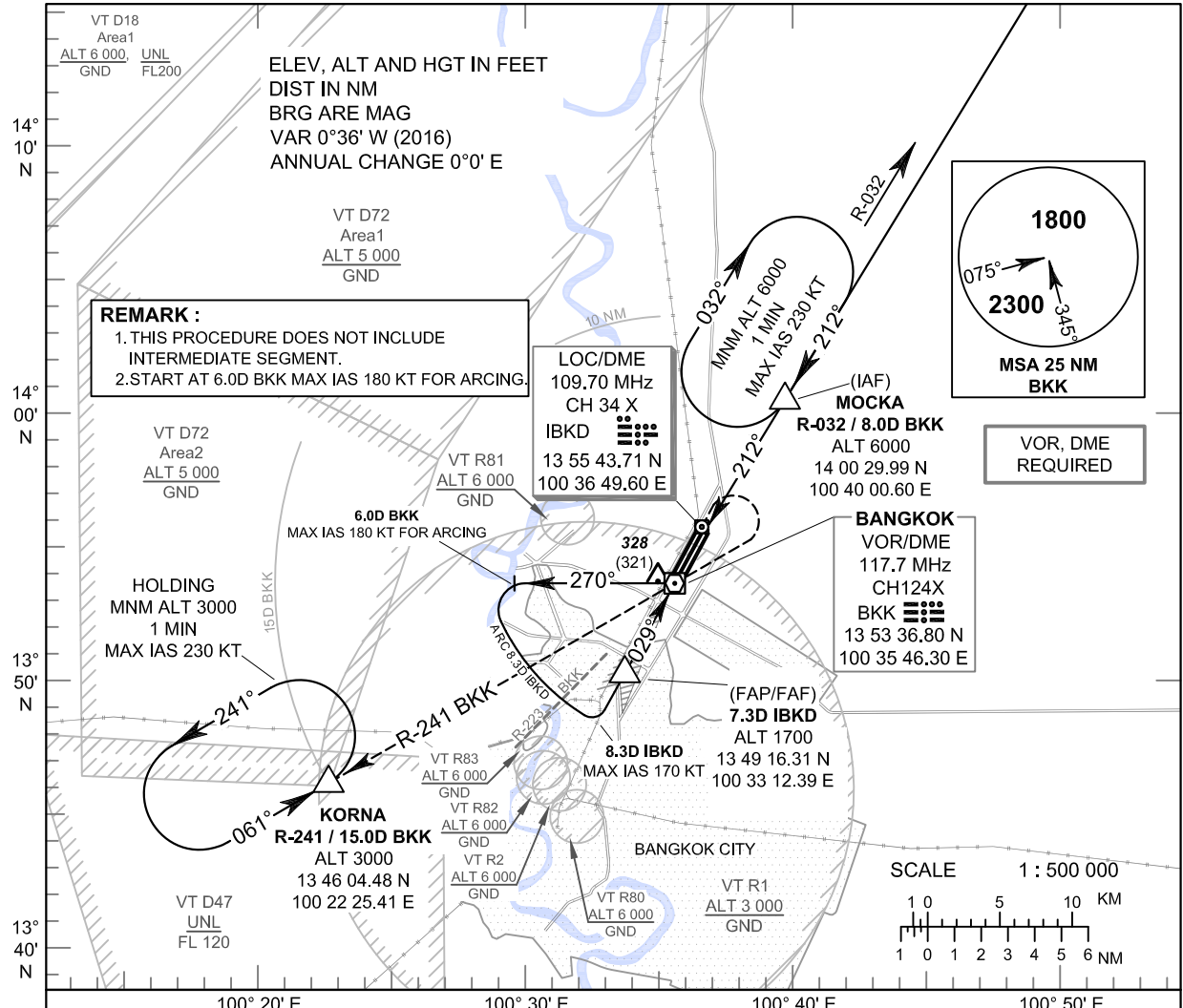


INSTRUMENT APPROACH CHART - ICAO **AERODROME ELEV 9 FT**
HEIGHTS RELATED TO THR RWY03L - ELEV 7 FT

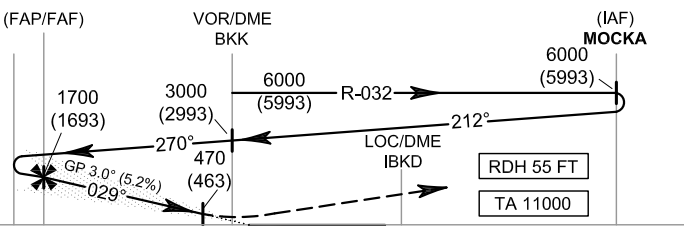
| | |
|------|-----------------|
| APP | : 119.1, 262.5 |
| | : 119.4, 262.5 |
| | : 120.3, 262.5 |
| | : 128.95, 262.5 |
| | : 122.35, 262.5 |
| | : 124.35, 262.5 |
| | : 125.2, 262.5 |
| DAR | : 133.0, 262.5 |
| TWR | : 118.1, 236.6 |
| ATIS | : 126.4, 344.6 |

BANGKOK / Don Mueang Intl (VTBD)
ILS or LOC RWY03L



MISSED APPROACH :
No turn before MAPt (for LOC only).
 Climb on track 029° direct to the LOC/DME then climb outbound on R-029 BKK VOR to 1500 FT then turn right to VOR/DME BKK and continue climb on R-241 BKK VOR to 15 DME BKK VOR FIX at 3000 FT and hold or as directed by ATC.

ELEV 7 FT
(THR RWY03L)



| | | | | | |
|----------------|-----|-----|-----|---|-----|
| DME FM VOR/DME | 6.0 | 5.0 | 1.1 | 0 | 8.0 |
| DME FM LOC/DME | 7.3 | 3.4 | 2.1 | 0 | |
| NM FM THR 03L | 5.2 | 1.3 | 0 | | |

CHANGE: APP FREQ, DAR FREQ.

| OCA/H | | A | B | C | D | Distance (IBKD) | 7 DME | 6 DME | 5 DME | 4 DME | 3.4 DME | | |
|------------------------|----------|---------------------------------|---|---|---|-------------------|-------------|-------------|-----------|-----------|-----------|------|------|
| Straight - in Approach | CAT I | 220 (213) | | | | Altitude (Height) | 1605 (1598) | 1290 (1283) | 975 (968) | 660 (653) | 470 (463) | | |
| | LOC only | 470 (463) | | | | Ground speed | knot | 100 | 120 | 140 | 160 | 180 | 200 |
| Circling (OCH AAL) | | 700 (691) 800 (791) 1100 (1091) | | | | FAF-MAPt 3.9 NM | (min:s) | 2:20 | 1:57 | 1:40 | 1:28 | 1:18 | 1:10 |
| | | | | | | Rate of descent | (ft/min) | 530 | 637 | 743 | 849 | 955 | 1061 |