

**STANDARD DEPARTURE CHART-
INSTRUMENT (SID) - ICAO**

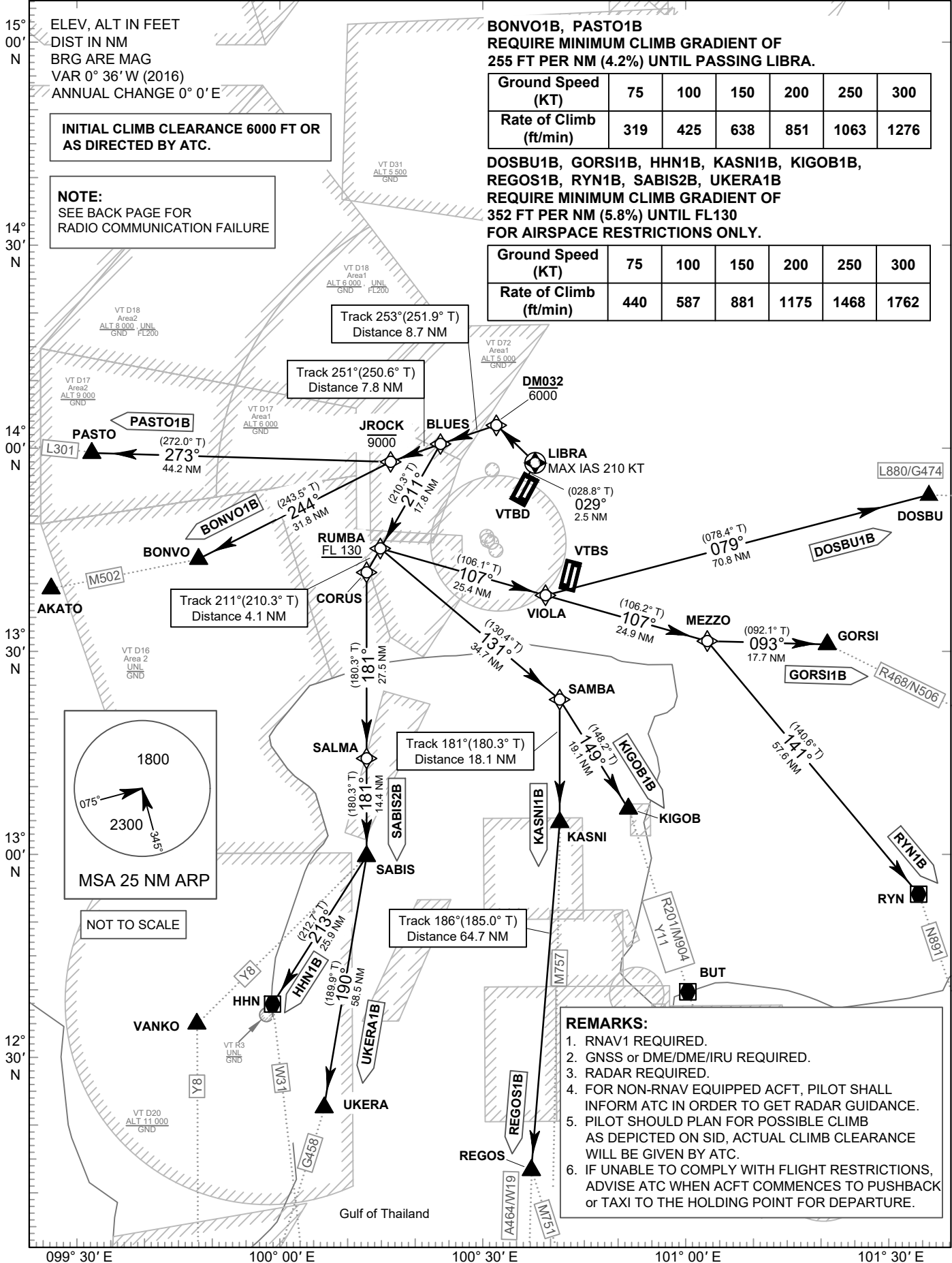
TRANSITION ALTITUDE
11000 FT

SPEED RESTRICTION
MAX IAS 250 KT AT OR
BELOW ALT 10000 FT
UNLESS OTHERWISE
AUTHORIZED BY ATC.

APP : 119.1, 262.5
: 119.4, 262.5
: 120.3, 262.5
: 128.95, 262.5
: 122.35, 262.5
: 124.35, 262.5
: 125.2, 262.5
DAR : 133.0, 262.5
TWR : 118.1, 236.6
DEP ATIS : 118.55

**BANGKOK/Don Mueang Intl (VTBD)
RNAV RWY03L**

BONVO1B DOSBU1B GORSI1B
HHN1B KASNI1B KIGOB1B
PASTO1B REGOS1B
RYN1B SABIS2B UKERA1B



**INITIAL CLIMB CLEARANCE 6000 FT OR
AS DIRECTED BY ATC.**

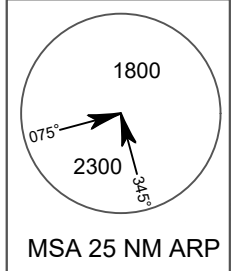
NOTE:
SEE BACK PAGE FOR
RADIO COMMUNICATION FAILURE

**BONVO1B, PASTO1B
REQUIRE MINIMUM CLIMB GRADIENT OF
255 FT PER NM (4.2%) UNTIL PASSING LIBRA.**

Ground Speed (KT)	75	100	150	200	250	300
Rate of Climb (ft/min)	319	425	638	851	1063	1276

**DOSBU1B, GORSI1B, HHN1B, KASNI1B, KIGOB1B,
REGOS1B, RYN1B, SABIS2B, UKERA1B
REQUIRE MINIMUM CLIMB GRADIENT OF
352 FT PER NM (5.8%) UNTIL FL130
FOR AIRSPACE RESTRICTIONS ONLY.**

Ground Speed (KT)	75	100	150	200	250	300
Rate of Climb (ft/min)	440	587	881	1175	1468	1762



- REMARKS:**
1. RNAV1 REQUIRED.
 2. GNSS or DME/DME/IRU REQUIRED.
 3. RADAR REQUIRED.
 4. FOR NON-RNAV EQUIPPED ACFT, PILOT SHALL INFORM ATC IN ORDER TO GET RADAR GUIDANCE.
 5. PILOT SHOULD PLAN FOR POSSIBLE CLIMB AS DEPICTED ON SID, ACTUAL CLIMB CLEARANCE WILL BE GIVEN BY ATC.
 6. IF UNABLE TO COMPLY WITH FLIGHT RESTRICTIONS, ADVISE ATC WHEN ACFT COMMENCES TO PUSHBACK or TAXI TO THE HOLDING POINT FOR DEPARTURE.

CHANGE: APP FREQ. DAR FREQ. DEP ATIS ADDED.