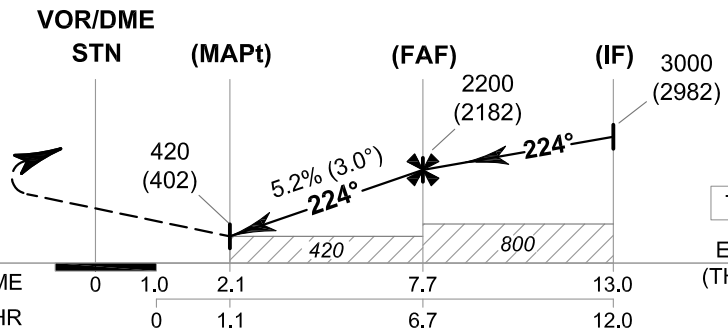


MISSED APPROACH:

No turn before MAPt.
**Speed restricted to
MAX IAS 200 KT until after turn.**
Climb straight ahead to 1200 FT,
then turn left to intercept outbound
R-110 STN VOR, then proceed to
15 DME STN VOR and follow arc
to GULNA at 3000 FT and hold
or as directed by ATC.



DME FM VOR/DME	0	1.0	2.1	7.7	13.0
NM FM THR	0	1.1	6.7	12.0	

TA 11000
ELEV 18 FT
(THR RWY22)

CHANGE: NEW PROCEDURES.

OCA/H	A	B	C	D	Distance (STN)	2.1 D	3 D	4 D	5 D	6 D	7 D	FAF
Straight - in Approach	420 (402)				Altitude (Height)	420 (402)	700 (682)	1015 (997)	1330 (1312)	1650 (1632)	1965 (1947)	2200 (2182)
					Ground speed	knot	70	90	100	120	140	160
Circling (OCH AAL)	860 (840)				Rate of descent	ft/min	369	474	527	632	737	843