

**STANDARD DEPARTURE CHART -  
INSTRUMENT (SID) - ICAO**

APP : 123.6  
TWR : 119.8, 236.6  
ATIS : 126.6

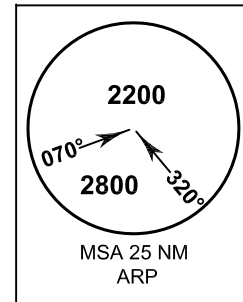
**NAKHON RATCHASIMA/  
Nakhon Ratchasima (VTUQ)  
RNAV RWY06**

**SAMBY1A SITTA1A VOBOT1A**

ELEV, ALT, AND HGT IN FEET  
DIST IN NM  
BRG ARE MAG  
VAR 0° 49' W (2015)  
Annual Change 2' W

VT D30  
WEST  
UNL  
GND

VT D30  
EAST  
UNL  
GND



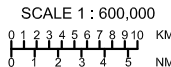
COM FAILURE  
- SET TRANSPONDER CODE 7600.  
- COMPLY WITH LAST ASSIGNED LEVEL UNTIL NEXT REPORTING POINT THEN CLIMB TO FLIGHT PLAN CRUISING LEVEL.

TRANSITION ALTITUDE  
11000

**1. RNP 1 Required  
2. GNSS Required**

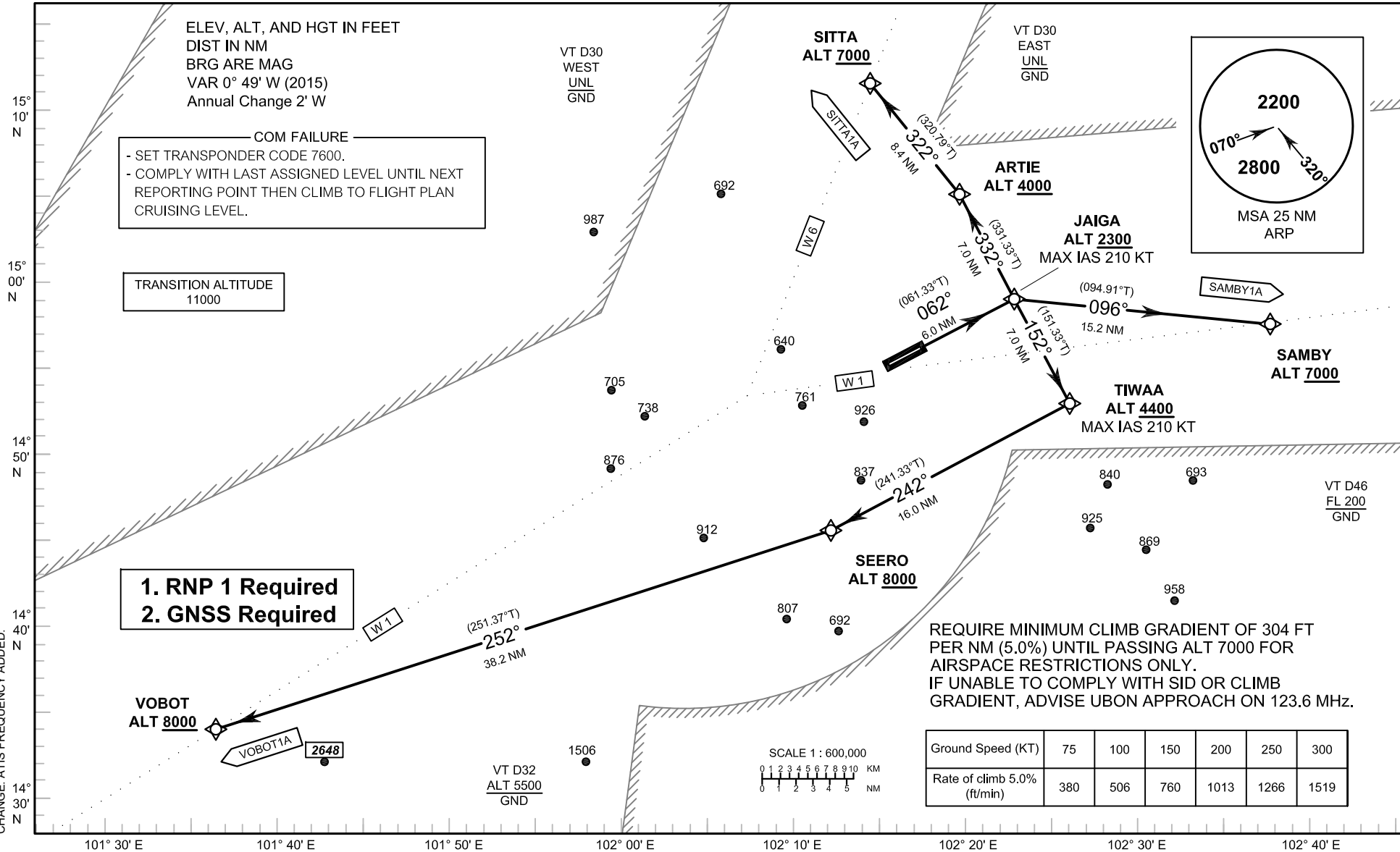
REQUIRE MINIMUM CLIMB GRADIENT OF 304 FT PER NM (5.0%) UNTIL PASSING ALT 7000 FOR AIRSPACE RESTRICTIONS ONLY.  
IF UNABLE TO COMPLY WITH SID OR CLIMB GRADIENT, ADVISE UBON APPROACH ON 123.6 MHz.

Ground Speed (KT)	75	100	150	200	250	300
Rate of climb 5.0% (ft/min)	380	506	760	1013	1266	1519



VT D32  
ALT 5500  
GND

VT D46  
FL 200  
GND



CHANGE: ATIS FREQUENCY ADDED.