

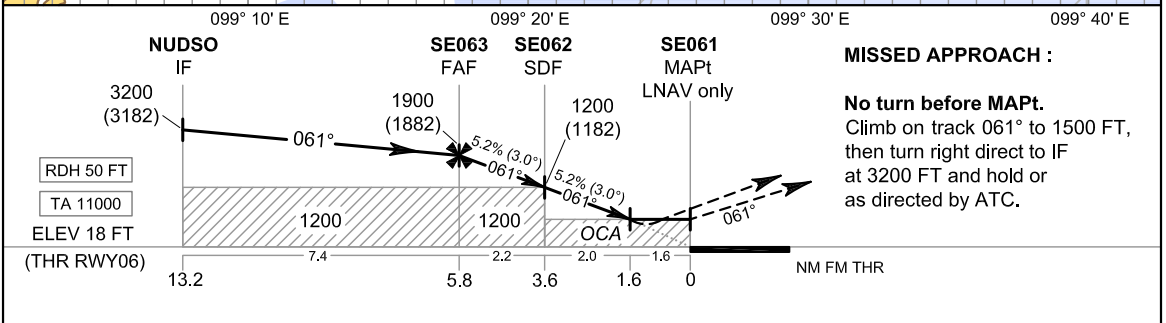
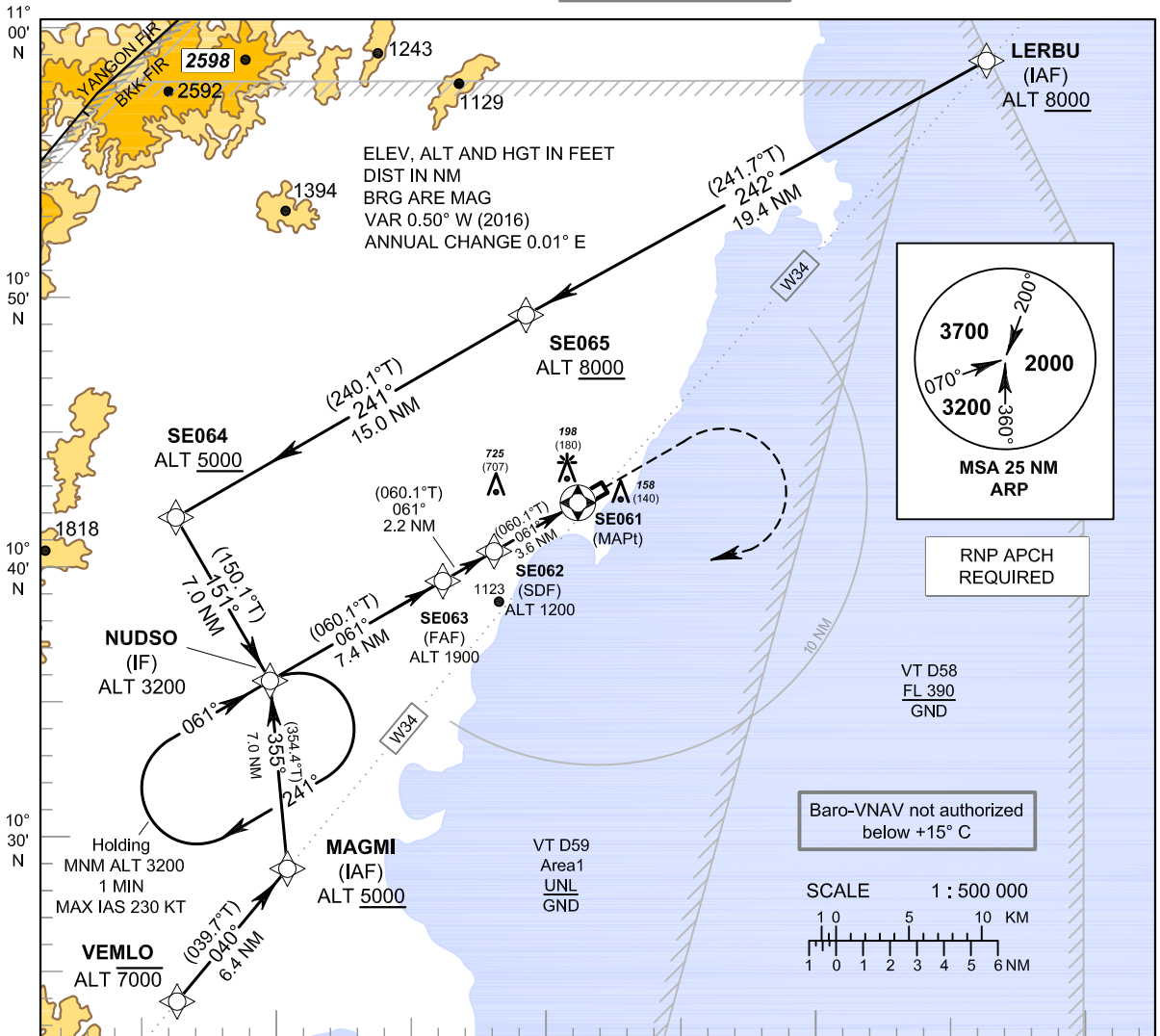
**INSTRUMENT
APPROACH
CHART - ICAO**

**AERODROME ELEV 18 FT
HEIGHTS RELATED TO
AERODROME ELEV**

APP : 122.6
TWR : 122.15 , 236.6
ATIS : 128.45

CHUMPHON / Chumphon (VTSE)

RNAV (GNSS) RWY06



MISSED APPROACH :

No turn before MAPt.
Climb on track 061° to 1500 FT,
then turn right direct to IF
at 3200 FT and hold or
as directed by ATC.

OCA/H	A	B	C	D	NM to NEXT WPT	FAF	5 NM	SDF	3 NM	2 NM	1.6 NM	
LNAV/VNAV	430 (412)				Altitude (Height)	1900 (1882)	1650 (1632)	1200 (1182)	1015 (997)	700 (682)	570 (552)	
LNAV	570 (552)				Ground speed	knot	70	90	100	120	140	160
Circling (OCH AAL)	1500 (1482)				Rate of descent (5.2%)	ft/min	369	474	527	632	737	843

CHANGE : ATIS FREQUENCY ADDED.