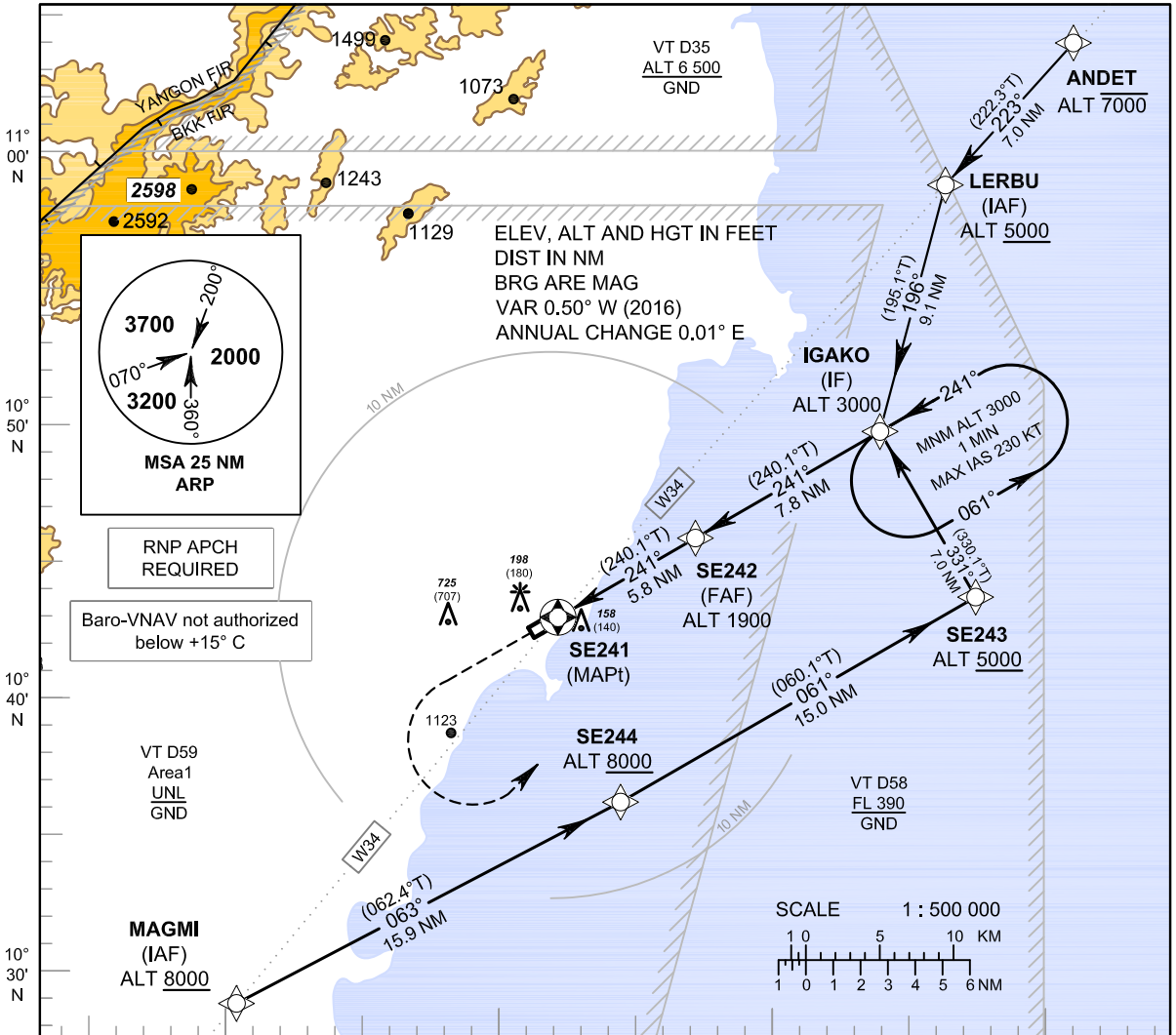


**INSTRUMENT
APPROACH
CHART - ICAO**

AERODROME ELEV 18 FT
HEIGHTS RELATED TO
AERODROME ELEV

APP : 122.6
TWR : 122.15 , 236.6
ATIS : 128.45

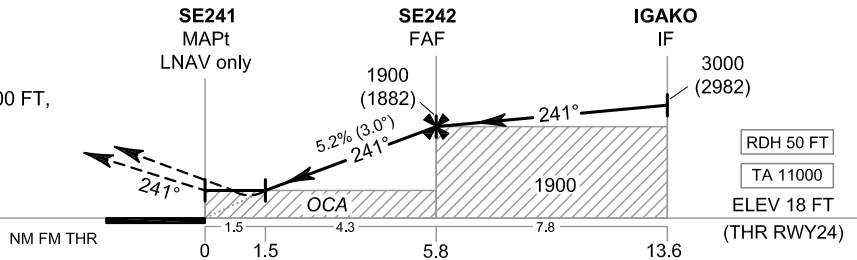
CHUMPHON / Chumphon (VTSE)
RNAV (GNSS) RWY24



MISSED APPROACH :

No turn before MAPt.

Climb on track 241° to 1500 FT,
then turn left direct to IF
at 3000 FT and hold or
as directed by ATC.



OCA/H	A	B	C	D	NM to NEXT WPT	1.5 NM	2 NM	3 NM	4 NM	5 NM	FAF	
LNNAV/VNAV	400 (382)				Altitude (Height)	540 (522)	700 (682)	1015 (997)	1330 (1312)	1650 (1632)	1900 (1882)	
LNNAV	540 (522)				Ground speed	knot	70	90	100	120	140	160
Circling (OCH AAL)	1500 (1482)				Rate of descent (5.2%)	ft/min	369	474	527	632	737	843

CHANGE : ATIS FREQUENCY ADDED.