

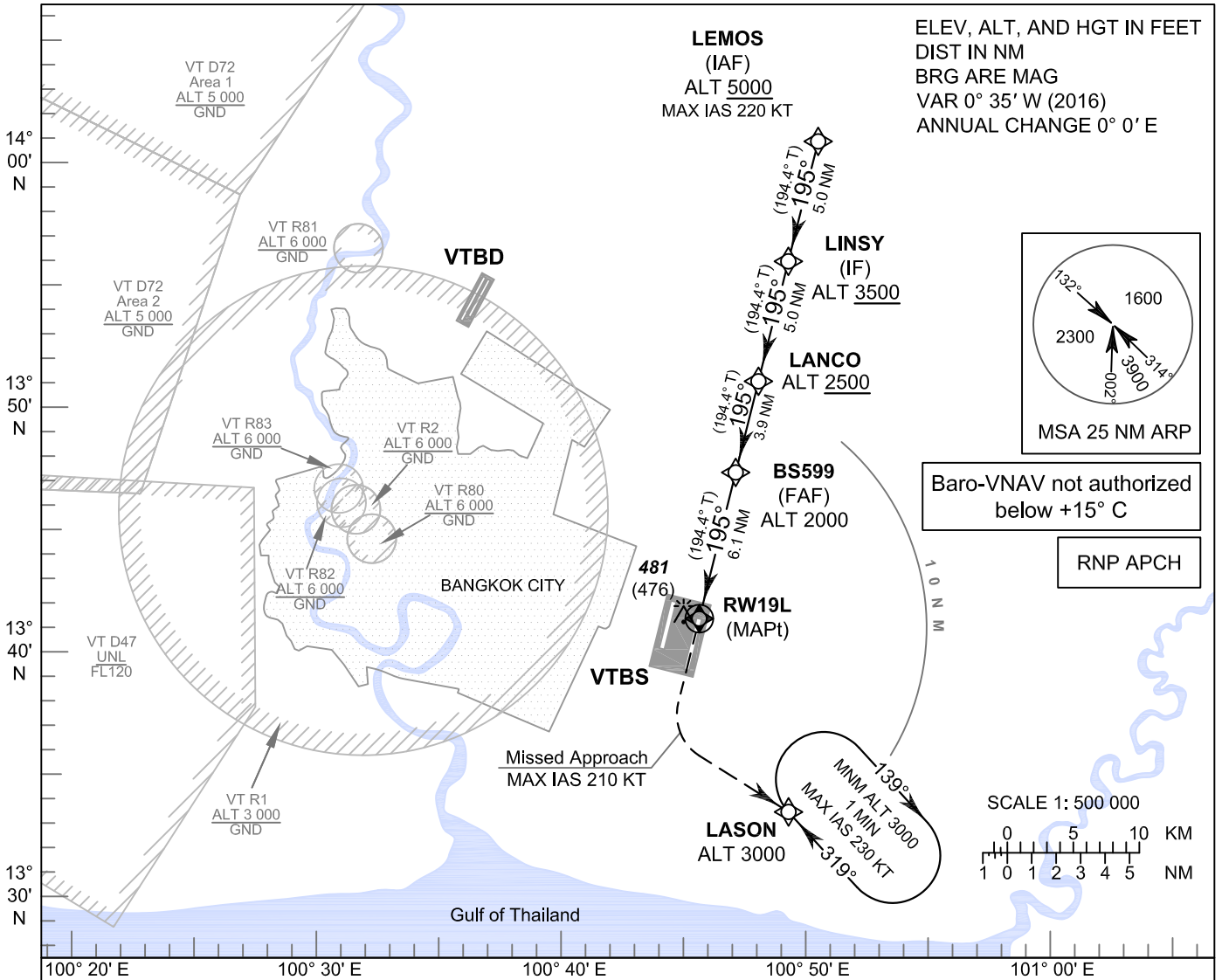
**INSTRUMENT  
APPROACH  
CHART - ICAO**

**AERODROME ELEV 5 FT  
HEIGHTS RELATED TO  
THR RWY19L - ELEV 5 FT**

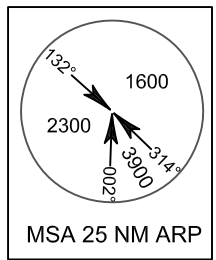
APP	: 119.1, 262.5
	: 120.3, 262.5
	: 128.95, 262.5
	: 122.35, 262.5
	: 124.35, 262.5
	: 125.2, 262.5
ARR	: 121.1
	: 126.3
TWR	: 118.2, 274.5
	: 119.0
ARR ATIS	: 133.6, 278.6

**BANGKOK / Suvarnabhumi Intl (VTBS)**

**RNAV (GNSS) RWY19L**

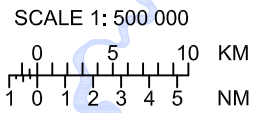


ELEV, ALT, AND HGT IN FEET  
DIST IN NM  
BRG ARE MAG  
VAR 0° 35' W (2016)  
ANNUAL CHANGE 0° 0' E



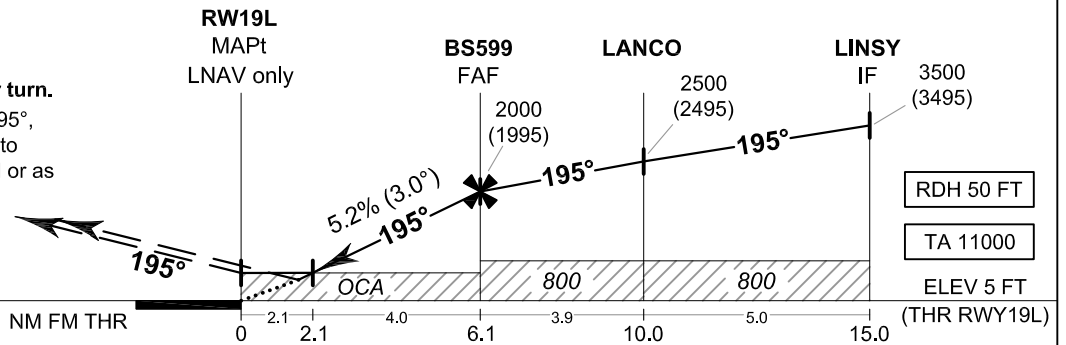
Baro-VNAV not authorized below +15° C

RNP APCH



**MISSED APPROACH:**

**No turn before MAPt.**  
**Speed restricted to MAX IAS 210 KT until after turn.**  
Climb to 1500 FT on track 195°, then climbing left turn direct to LASON at 3000 FT and hold or as directed by ATC.  
(If unable to reach 3000 FT at LASON, continue climb in the holding pattern.)



OCA/H	A	B	C	D	NM to NEXT WPT	2.1 NM	3 NM	4 NM	5 NM	6 NM	FAF	
LNAV / VNAV	600 (595)				Altitude (Height)	730 (725)	1005 (1000)	1320 (1315)	1635 (1630)	1950 (1945)	2000 (1995)	
LNAV	730 (725)				Ground speed	knot	70	90	100	120	140	160
Circling (OCH AAL)	800 (795)		900 (895)		Rate of descent FAF-MAPt 5.2%	ft/min	369	474	527	632	737	843

CHANGE: APP FREQ. ARR ATIS ADDED.