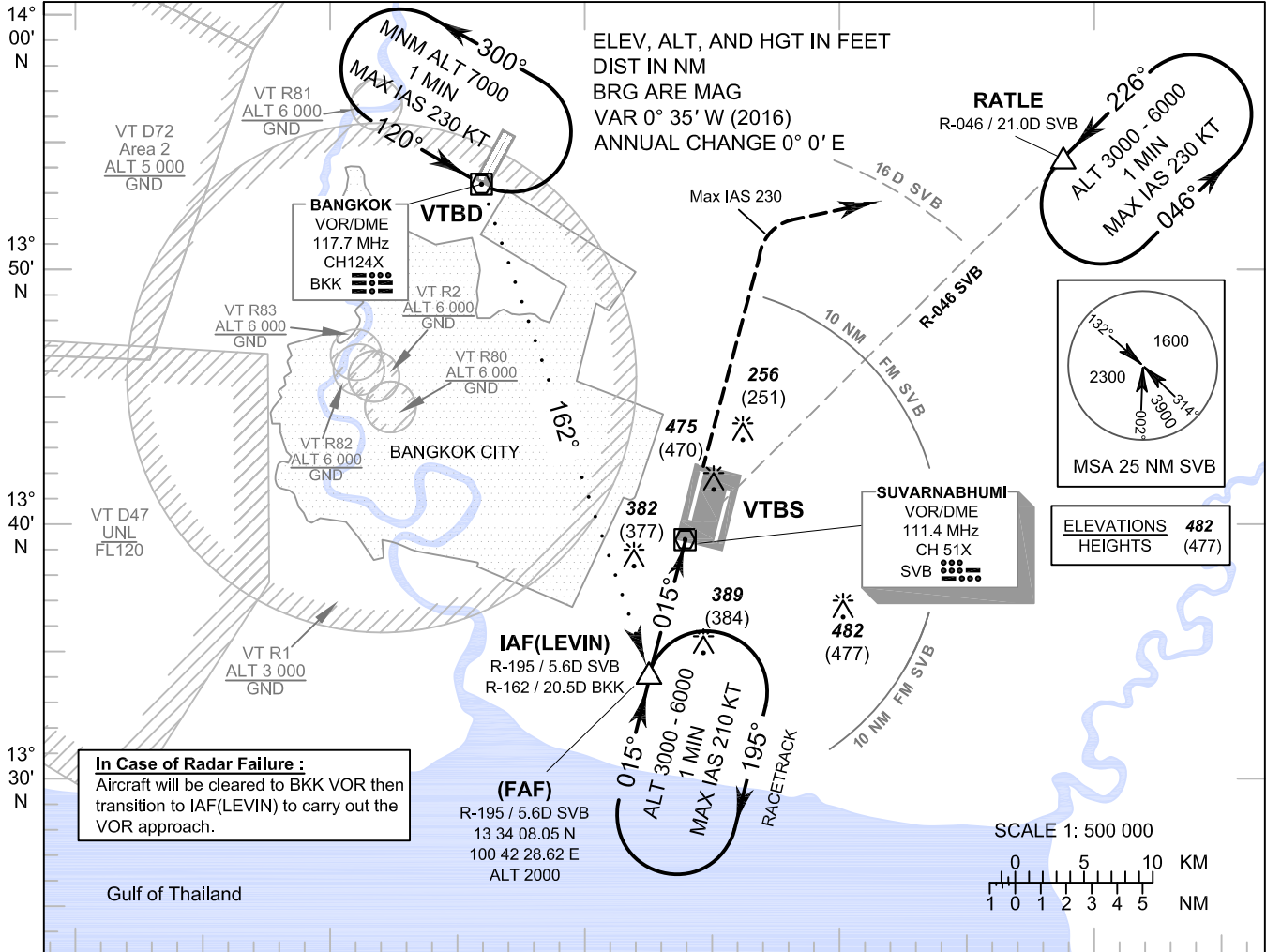


**INSTRUMENT
APPROACH
CHART - ICAO**

**AERODROME ELEV 5 FT
HEIGHTS RELATED TO
AERODROME ELEV**

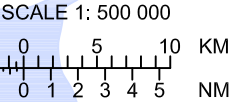
APP	: 119.1, 262.5
	: 120.3, 262.5
	: 128.95, 262.5
	: 122.35, 262.5
	: 124.35, 262.5
	: 125.2, 262.5
ARR	: 121.1
	: 126.3
TWR	: 118.2, 274.5
	: 119.0
ARR ATIS	: 133.6, 278.6

BANGKOK / Suvarnabhumi Intl (VTBS)
VOR RWY01L



In Case of Radar Failure:
Aircraft will be cleared to BKK VOR then transition to IAF(LEVIN) to carry out the VOR approach.

ELEVATIONS	482
HEIGHTS	(477)

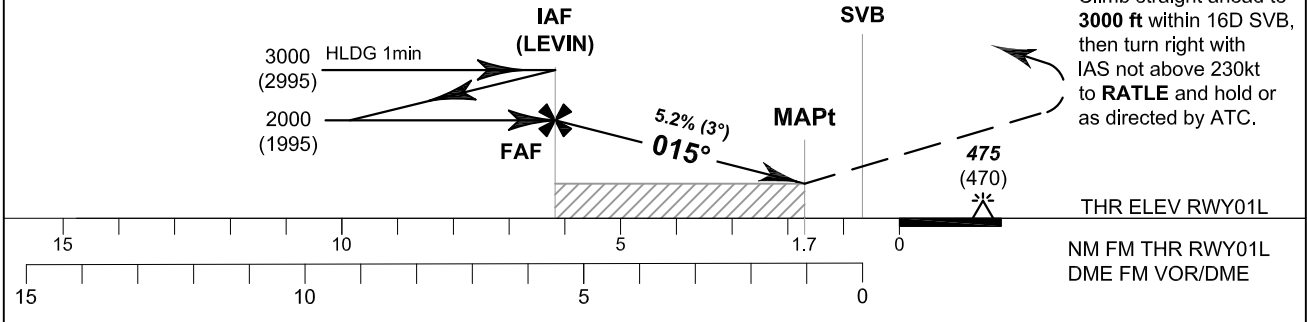


100° 20' E 100° 30' E 100° 40' E 100° 50' E 101° 00' E

VOR/DME	5D	4D	3D	2D
ALT (HGT) 3° APCH	1890 (1885)	1580 (1575)	1260 (1255)	940 (935)

TA 11000

MISSED APPROACH:
Climb straight ahead to 3000 ft within 16D SVB, then turn right with IAS not above 230kt to RATLE and hold or as directed by ATC.



OCA/H	A	B	C	D	Ground Speed	kt	100	120	140	160	180
Straight-in Approach	600 (595)				FAF-MAPt 4.4 NM	m:s	2 : 38	2 : 12	1 : 53	1 : 39	1 : 28
Circling (OCH AAL)	800 (795)	900 (895)			Rate of descent	ft/min	527	632	737	843	948

CHANGE: APP FREQ, ARR ATIS ADDED.