

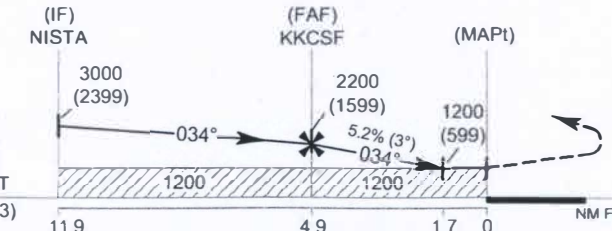
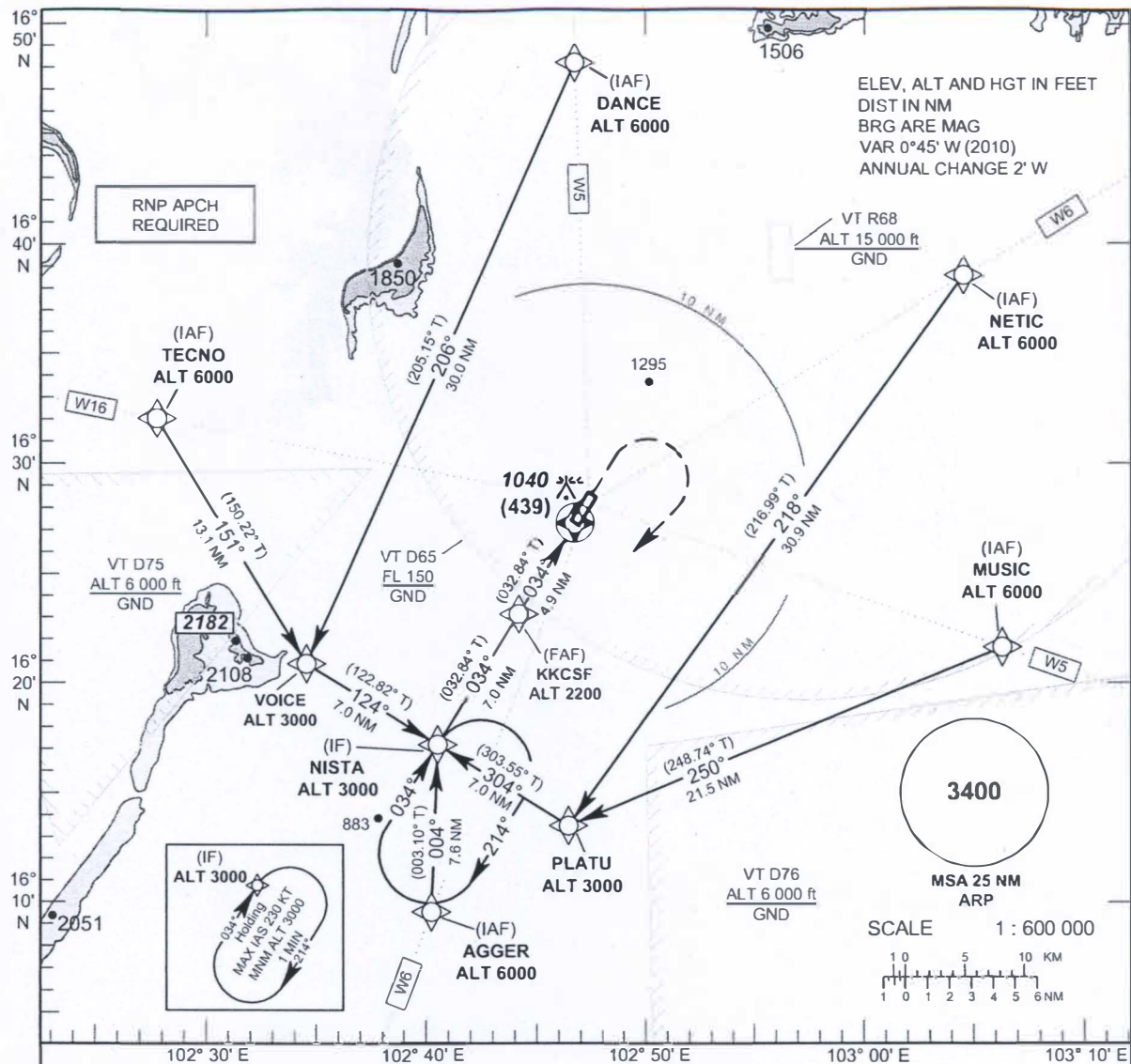
**INSTRUMENT
APPROACH
CHART - ICAO**

**AERODROME ELEV 670 FT
HEIGHTS RELATED TO
THR RWY 03 - ELEV 601 FT**

APP : 123.4, 240.0
TWR : 122.25, 236.6
GND : 121.9
ATIS : 126.85

KHON KAEN / Khon Kaen (VTUK)

RNP RWY 03



MISSED APPROACH :

No turn before MAPt.
Climb on track 034° to 1500 (899) FT
then turn right direct to IF at 3000 (2399) FT
and hold or as directed by ATC.

CHANGE: CHART TITLE:

OCA/H	A	B	C	D	NM to THR 03	FAF	4 NM	3 NM	2 NM	1.7 NM
LNAV	1200 (599)				Altitude (Height)	2200 (1599)	1915 (1314)	1600 (999)	1280 (679)	1200 (599)
					Ground speed (GS)	Knot	100	120	140	160
Circling (OCH AAL)	1600 (930)				Rate of descent	(ft/min)	530	630	740	845
							950	1055		