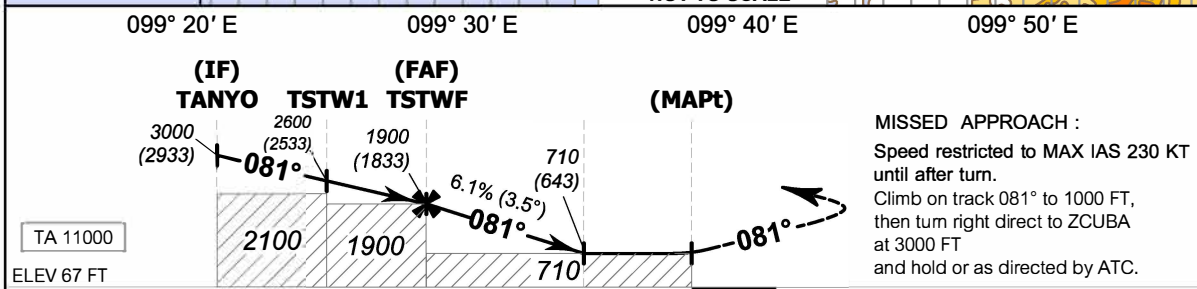
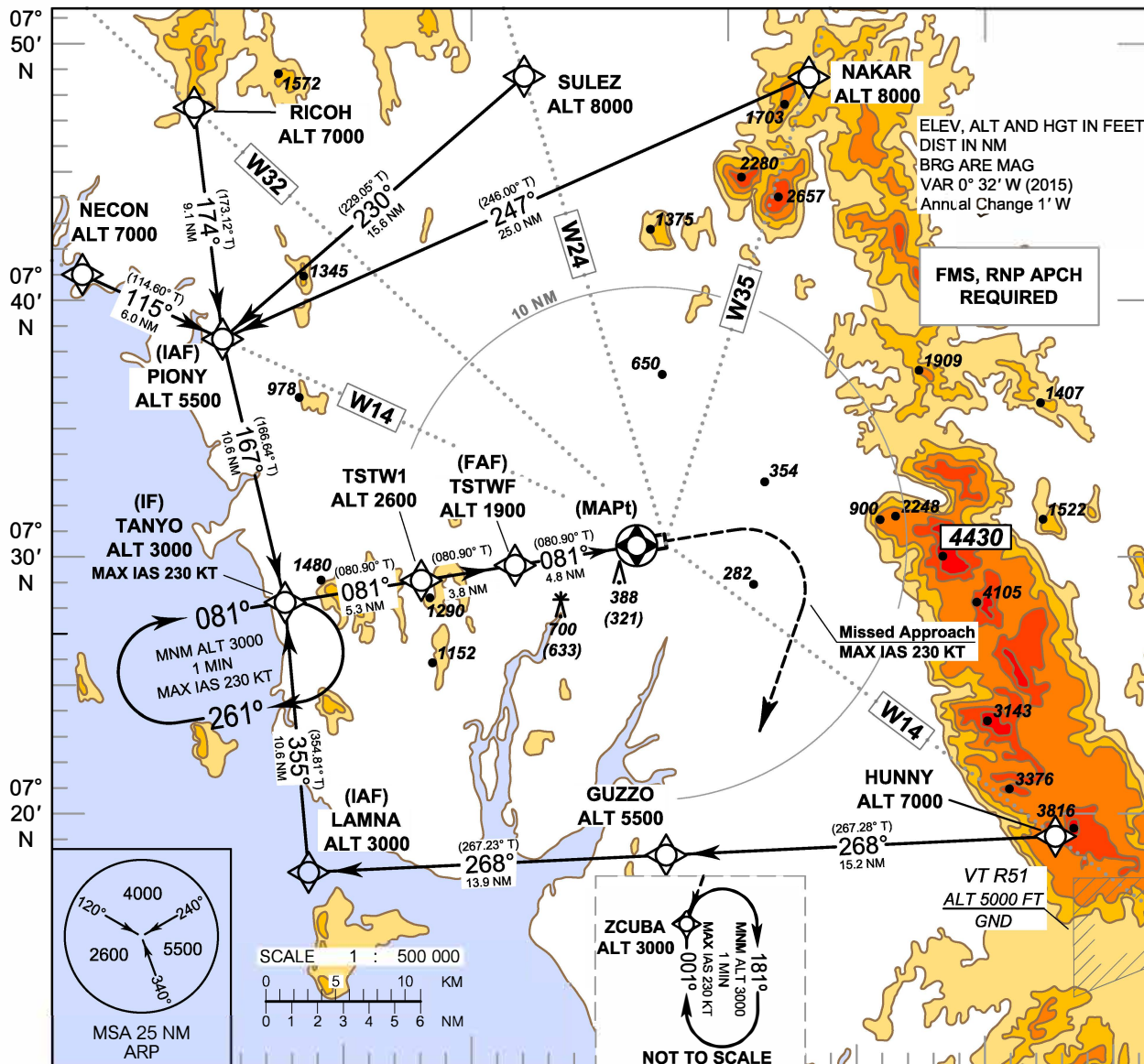


INSTRUMENT AERODROME ELEV 67 FT
 APPROACH HEIGHTS RELATED TO
 CHART - ICAO AERODROME ELEV

APP : 125.3
 TWR : 118.4 , 236.6

TRANG / Trang (VTST)

RNP RWY08



MISSED APPROACH :
 Speed restricted to MAX IAS 230 KT until after turn.
 Climb on track 081° to 1000 FT, then turn right direct to ZCUBA at 3000 FT and hold or as directed by ATC.

CHANGE : CHART TITLE

OCA/H	A	B	C	D	NM to THR08	FAF	4NM	3NM	2NM	1.6NM		
LNAV	710 (643)				Altitude (Height)	1900 (1833)	1600 (1533)	1230 (1163)	860 (793)	710 (643)		
Circling (OCH AAL)	1100 (1033)				Ground speed	knot	70	90	100	120	140	160
					Rate of descent	(ft/min)	432	556	618	741	865	988