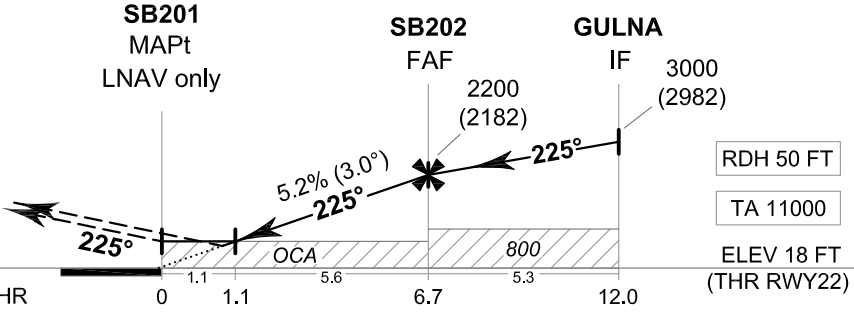


**MISSED APPROACH:**  
**No turn before MAPt .**  
**Speed restricted to MAX IAS 200 KT until after turn.**  
 Climb on track 225° to 1200 FT, then turn left direct to GOVDA. Continue to ELNON then GULNA at 3000 FT and hold or as directed by ATC.



OCA/H	A	B	C	D	NM to NEXT WPT	1.1 NM	2 NM	3 NM	4 NM	5 NM	6 NM	FAF
LNAV / VNAV	350 (332)				Altitude (Height)	420 (402)	700 (682)	1015 (997)	1330 (1312)	1650 (1632)	1965 (1947)	2200 (2182)
LNAV	420 (402)				Ground speed	knot	70	90	100	120	140	160
Circling (OCH AAL)	860 (840)				Rate of descent FAF-MAPt 5.2%	ft/min	369	474	527	632	737	843

CHANGE: NEW PROCEDURES.