

STANDARD DEPARTURE CHART - INSTRUMENT (SID) - ICAO

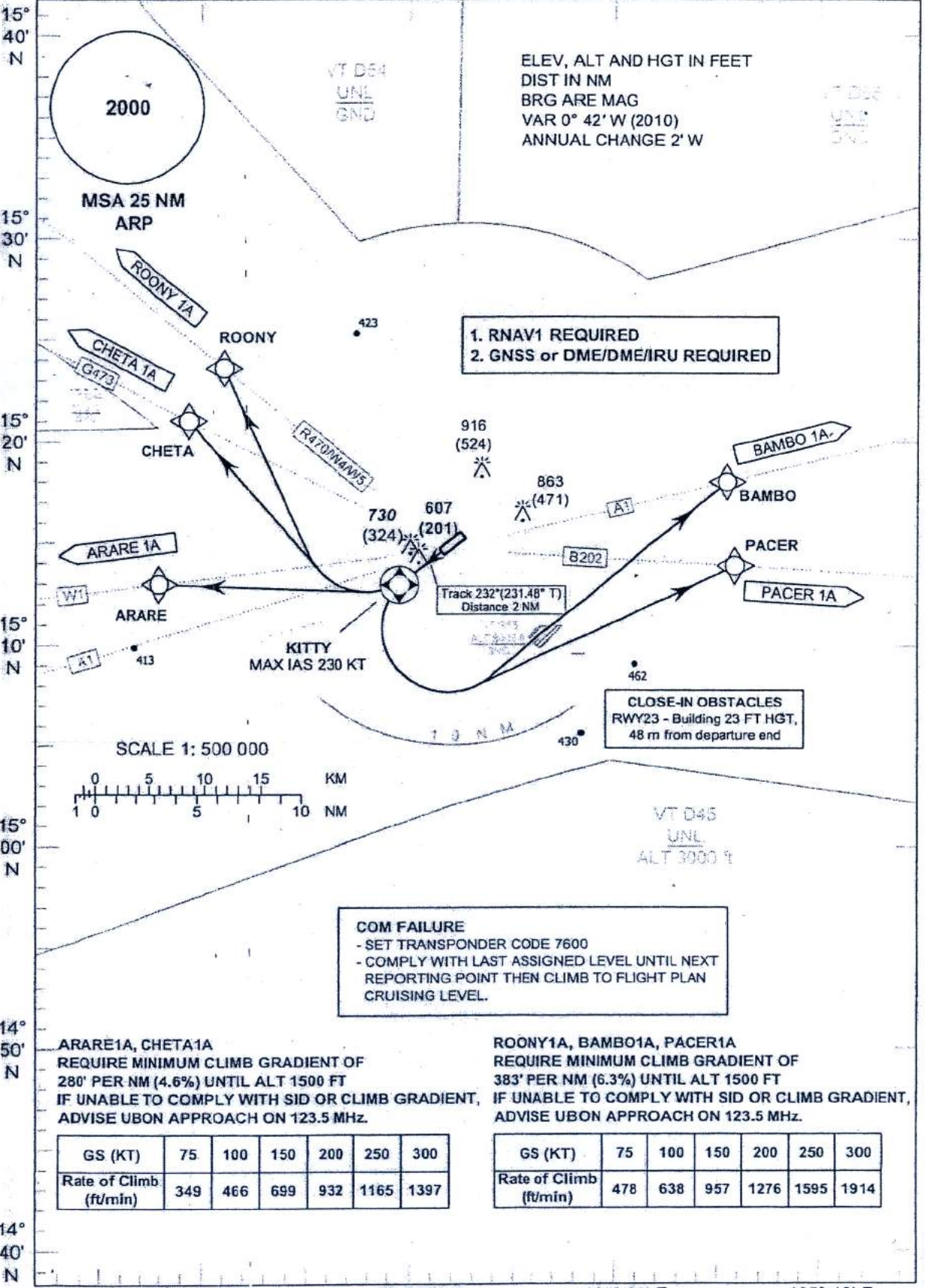
TRANSITION ALTITUDE
11000 FT

APP : 123.5 , 257.8
TWR : 119.9 , 274.5
GND : 121.9 , 275.8

UBON RATCHATHANI /
Ubun Ratchathani (VTUU)
RNAV RWY23

ARARE1A, BAMBO1A, CHETA1A, PACER1A, ROONY1A

ELEV, ALT AND HGT IN FEET
DIST IN NM
BRG ARE MAG
VAR 0° 42' W (2010)
ANNUAL CHANGE 2' W



1. RNAV1 REQUIRED
2. GNSS or DME/DME/IRU REQUIRED

CLOSE-IN OBSTACLES
RWY23 - Building 23 FT HGT,
48 m from departure end

COM FAILURE
- SET TRANSPONDER CODE 7600
- COMPLY WITH LAST ASSIGNED LEVEL UNTIL NEXT REPORTING POINT THEN CLIMB TO FLIGHT PLAN CRUISING LEVEL.

ARARE1A, CHETA1A
REQUIRE MINIMUM CLIMB GRADIENT OF
280' PER NM (4.6%) UNTIL ALT 1500 FT
IF UNABLE TO COMPLY WITH SID OR CLIMB GRADIENT,
ADVISE UBON APPROACH ON 123.5 MHz.

| | | | | | | |
|------------------------|-----|-----|-----|-----|------|------|
| GS (KT) | 75 | 100 | 150 | 200 | 250 | 300 |
| Rate of Climb (ft/min) | 349 | 466 | 699 | 932 | 1165 | 1397 |

ROONY1A, BAMBO1A, PACER1A
REQUIRE MINIMUM CLIMB GRADIENT OF
383' PER NM (6.3%) UNTIL ALT 1500 FT
IF UNABLE TO COMPLY WITH SID OR CLIMB GRADIENT,
ADVISE UBON APPROACH ON 123.5 MHz.

| | | | | | | |
|------------------------|-----|-----|-----|------|------|------|
| GS (KT) | 75 | 100 | 150 | 200 | 250 | 300 |
| Rate of Climb (ft/min) | 478 | 638 | 957 | 1276 | 1595 | 1914 |