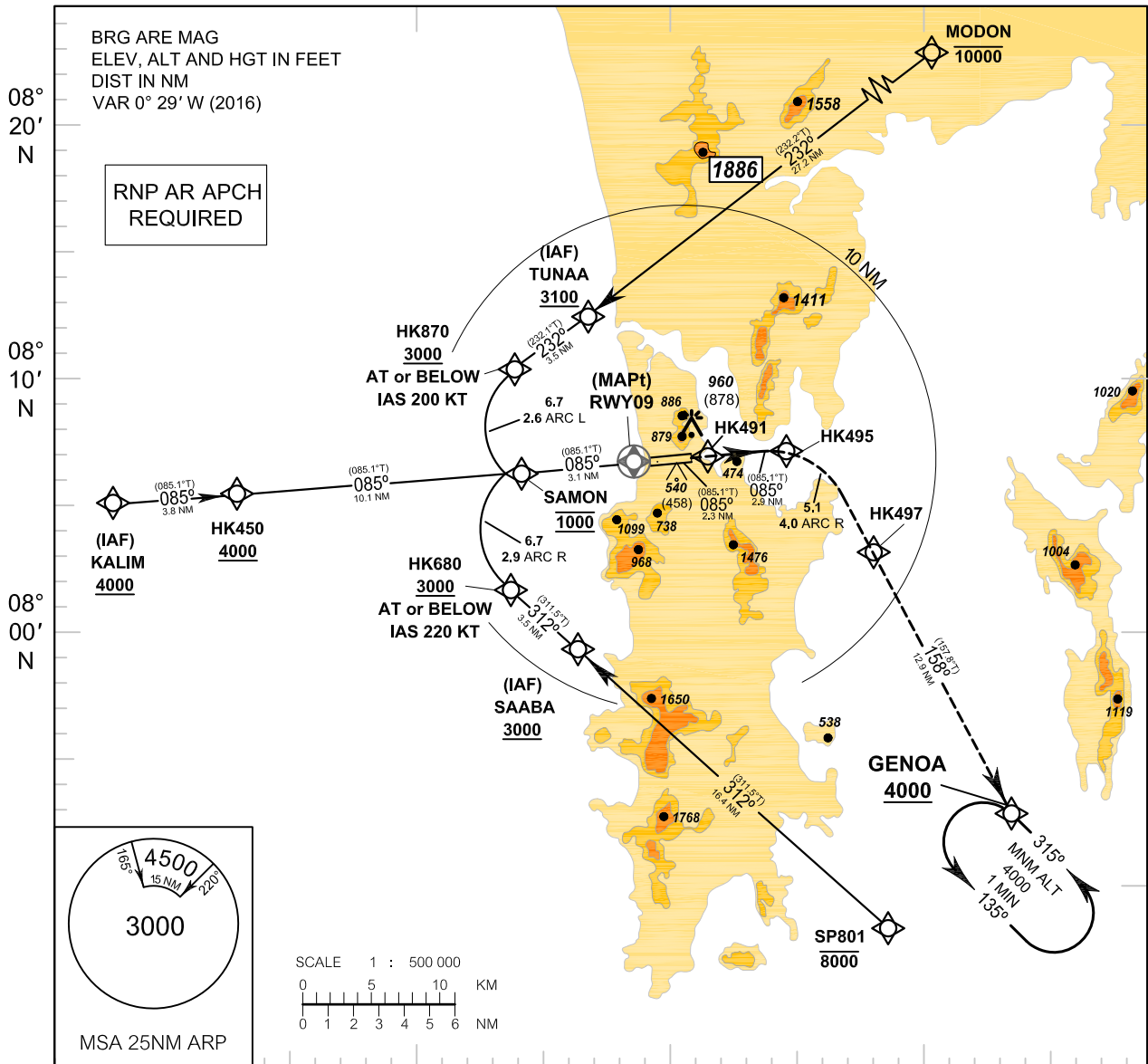


INSTRUMENT AERODROME ELEV 82 FT
APPROACH HEIGHTS RELATED TO
CHART - ICAO THR RWY09 - ELEV 19 FT

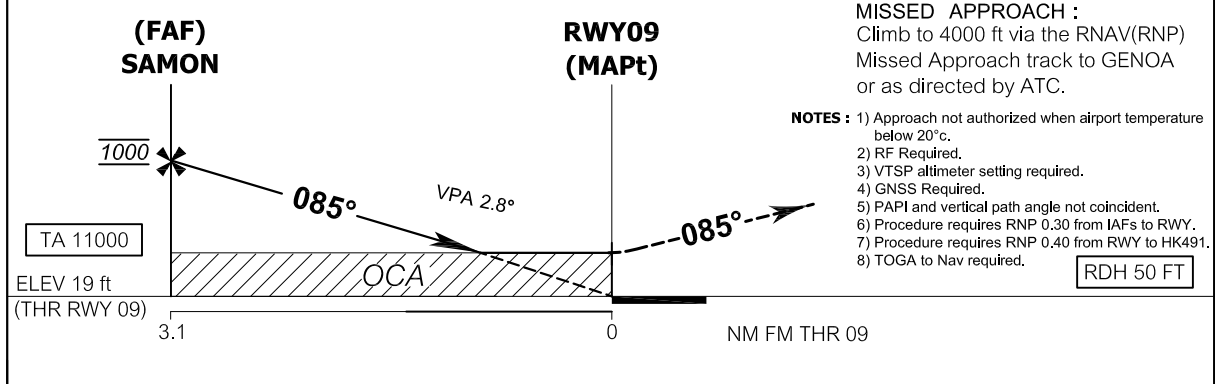
APP : 124.7, 284.0 GND : 121.9
 ARR : 120.7 ATIS : 128.0
 TWR : 118.1, 236.6

PHUKET / Phuket Intl (VTSP)

RNAV (RNP)y RWY 09



98° 10' E 98° 20' E 98° 30' E



MISSED APPROACH :
 Climb to 4000 ft via the RNAV(RNP)
 Missed Approach track to GENOA
 or as directed by ATC.

- NOTES :**
- 1) Approach not authorized when airport temperature below 20°C.
 - 2) RF Required.
 - 3) VTSP altimeter setting required.
 - 4) GNSS Required.
 - 5) PAPI and vertical path angle not coincident.
 - 6) Procedure requires RNP 0.30 from IAFs to RWY.
 - 7) Procedure requires RNP 0.40 from RWY to HK491.
 - 8) TOGA to Nav required.

OCA/H	C	D
RNP 0.30	650 (631)	

REMARK: 1. CIRCLING AND ALTERNATE - N/A
 2. AREA OUTSIDE IMAGE IS NOT TO SCALE

CHANGE: ARR FREQUENCY ADDED. GND FREQUENCY ADDED. ATIS FREQUENCY ADDED.