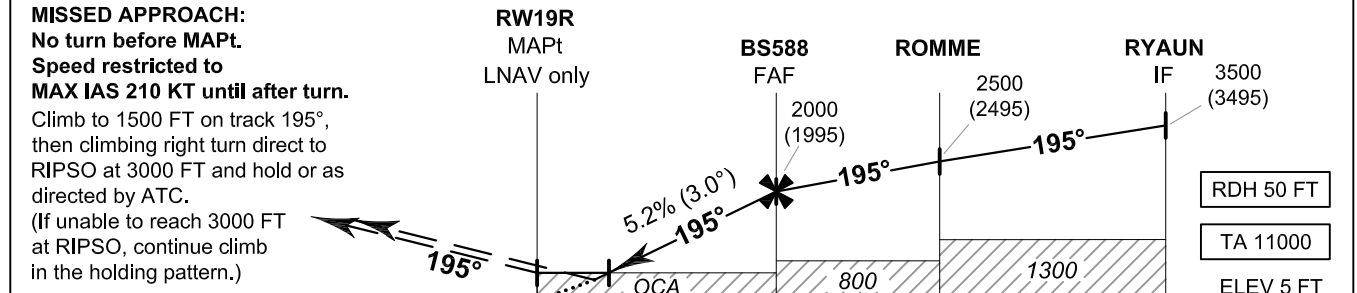
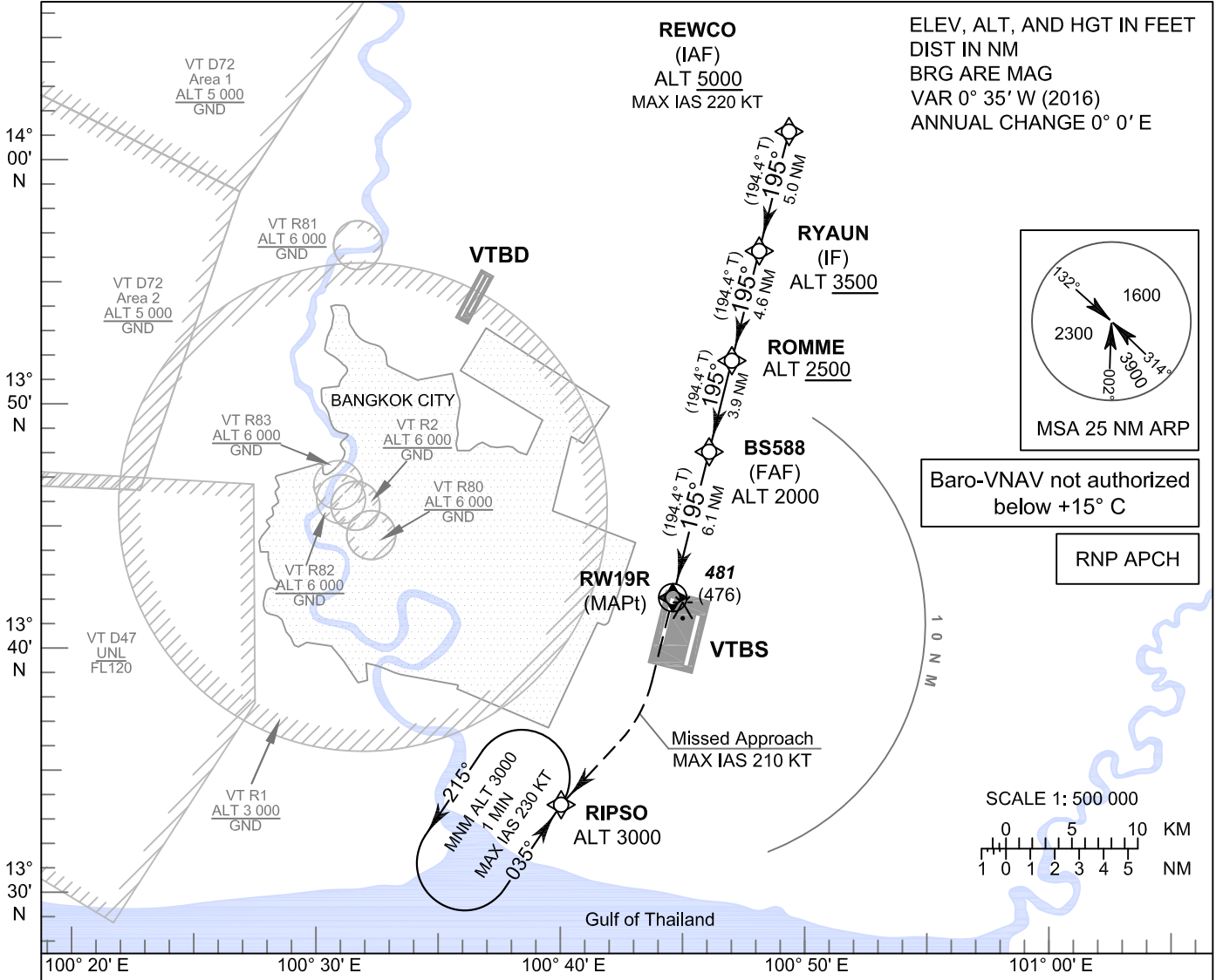


INSTRUMENT APPROACH CHART - ICAO **AERODROME ELEV 5 FT**
HEIGHTS RELATED TO THR RWY19R - ELEV 5 FT

APP	: 119.1, 262.5
	: 120.3, 262.5
	: 128.95, 262.5
	: 122.35, 262.5
	: 124.35, 262.5
	: 125.2, 262.5
ARR	: 121.1
	: 126.3
TWR	: 118.2, 274.5
	: 119.0
ARR ATIS	: 133.6, 278.6

BANGKOK / Suvarnabhumi Intl (VTBS)
RNAV (GNSS) RWY19R



MISSED APPROACH:
No turn before MAPt.
Speed restricted to MAX IAS 210 KT until after turn.
 Climb to 1500 FT on track 195°, then climbing right turn direct to RIPS0 at 3000 FT and hold or as directed by ATC.
 (If unable to reach 3000 FT at RIPS0, continue climb in the holding pattern.)

OCA/H	A	B	C	D	NM to NEXT WPT	2.1 NM	3 NM	4 NM	5 NM	6 NM	FAF	
LNNAV / VNAV	600 (595)				Altitude (Height)	730 (725)	1005 (1000)	1320 (1315)	1635 (1630)	1950 (1945)	2000 (1995)	
LNNAV	730 (725)				Ground speed	knot	70	90	100	120	140	160
Circling (OCH AAL)	800 (795)		900 (895)		Rate of descent FAF-MAPt 5.2%	ft/min	369	474	527	632	737	843

CHANGE: APP FREQ. ARR ATIS ADDED.