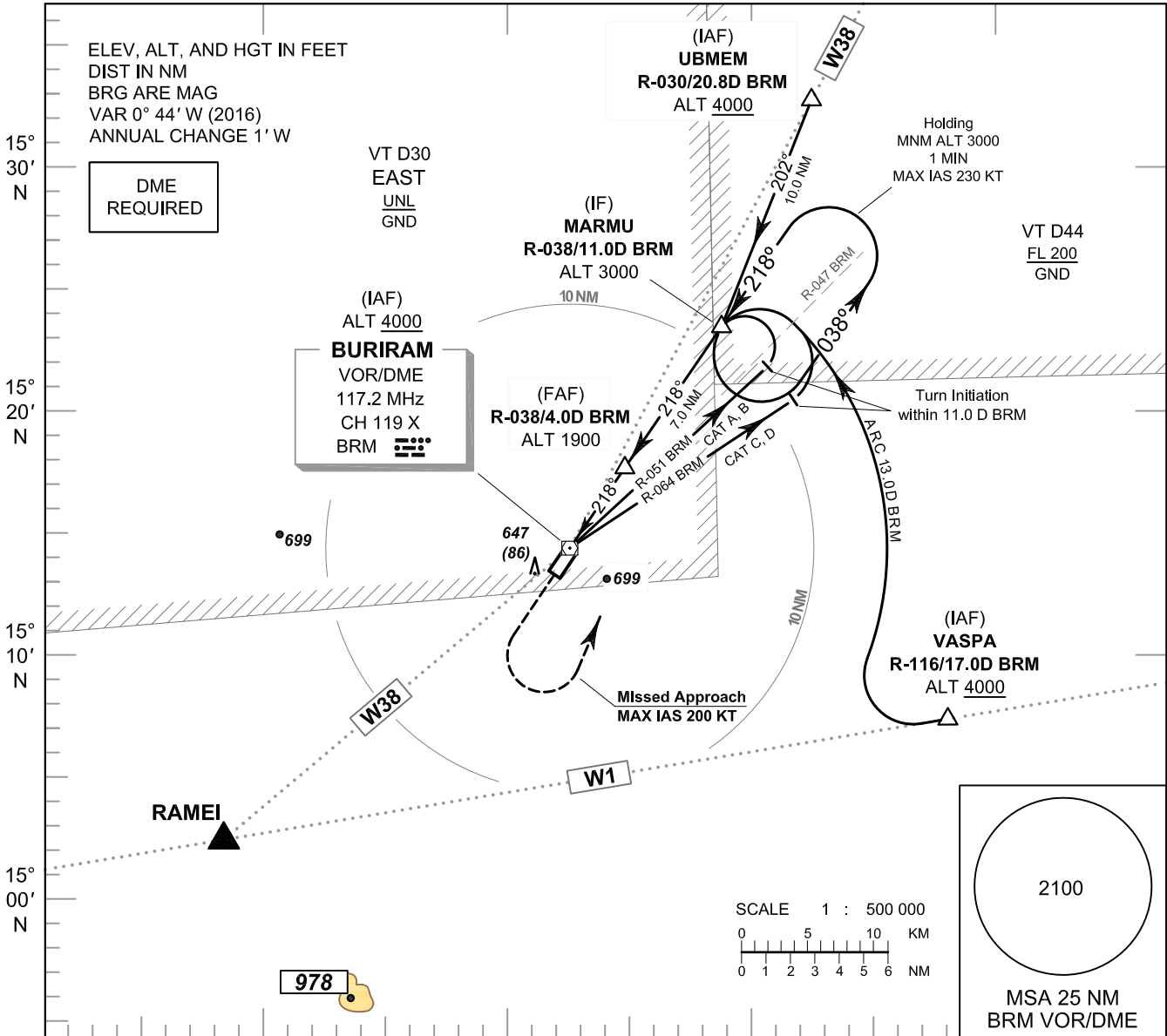


INSTRUMENT APPROACH CHART - ICAO **AERODROME ELEV 590 FT**
HEIGHTS RELATED TO THR RWY22 - ELEV 561 FT

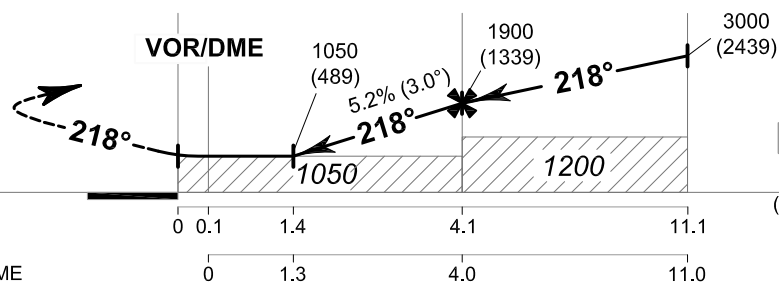
APP : 125.55 MHz
 TWR : 118.05, 236.6 MHz
 ATIS : 303 kHz

BURI RAM / Buri ram (VTUO)

VOR RWY22



MISSED APPROACH:
 Speed restricted to **MAX IAS 200 KT** until after turn.
 Climb straight ahead to 1100 FT, then turn left to intercept outbound R-038 BRM VOR and proceed to IF at 3000 FT and hold or as directed by ATC.



NM FM THR	0	0.1	1.4	4.1	11.1
DME FM VOR/DME	0	1.3	4.0	11.0	

OCA/H	A	B	C	D	Distance (BRM)	1.3D	2D	3D	FAF			
Straight - in approach	1050 (489)				Altitude (Height)	1050 (489)	1275 (714)	1590 (1029)	1900 (1339)			
					Ground speed	knot	70	90	100	120	140	160
Circling (OCH AAL)	1100 (510)		1300 (710)		Rate of descent 5.2%	ft/min	369	474	527	632	737	843

CHANGE : TWR FREQUENCIES.