

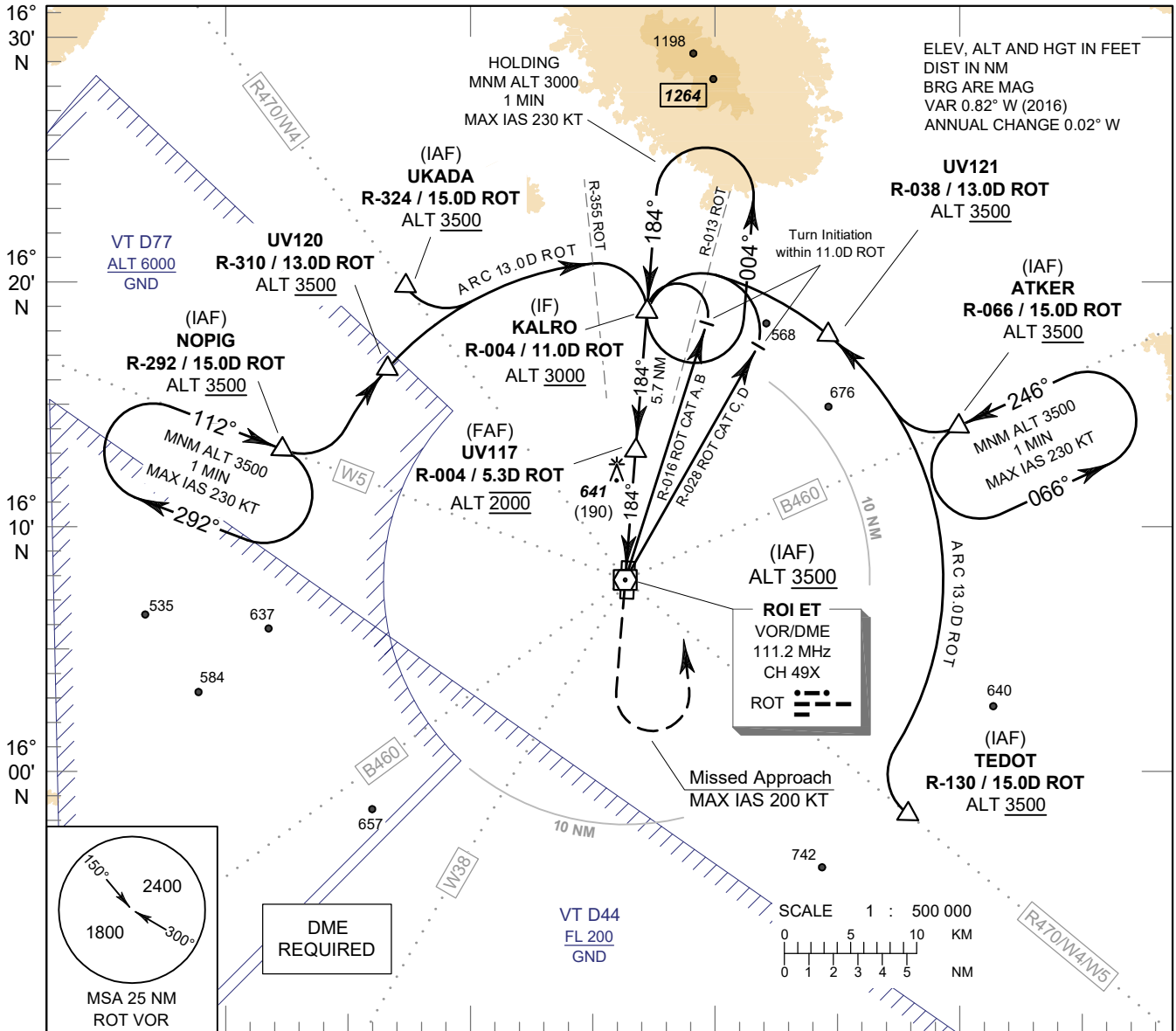
**INSTRUMENT
APPROACH
CHART - ICAO**

**AERODROME ELEV 451 FT
HEIGHTS RELATED TO
AERODROME ELEV**

APP : 125.4 MHz
TWR : 119.75 , 236.6 MHz
ATIS : 319 kHz

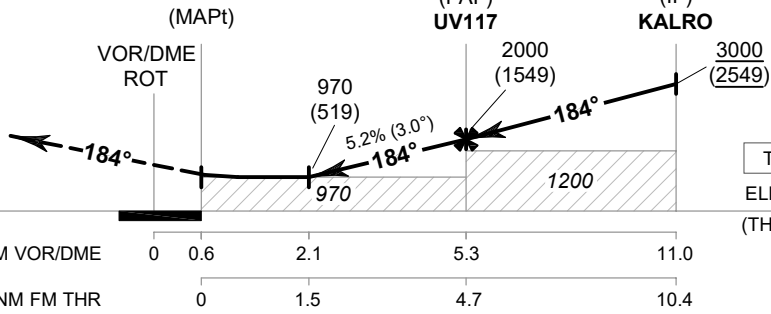
ROI ET / Roi Et (VTUV)

VOR RWY18



MISSED APPROACH :

No turn before MAPt.
**Speed restricted to
MAX IAS 200 KT until after turn.**
Climb on track 184° to 1500 FT,
then turn left to intercept
outbound R-004 ROT VOR and
proceed to KALRO at minimum 3000 FT
and hold or as directed by ATC.



DME FM VOR/DME	0	0.6	2.1	5.3	11.0
NM FM THR	0	1.5	4.7	10.4	

OCA/H	A	B	C	D	Distance (ROT)	2.1D	3D	4D	5D	FAF		
Straight - in Approach	970 (519)				Altitude (Height)	970 (519)	1260 (809)	1575 (1124)	1890 (1439)	2000 (1549)		
					Ground Speed	knot	70	90	100	120	140	160
Circling (OCH AAL)	1200 (749)				Rate of Descent	ft/min	369	474	527	632	737	843

CHANGE : NEW CHART.