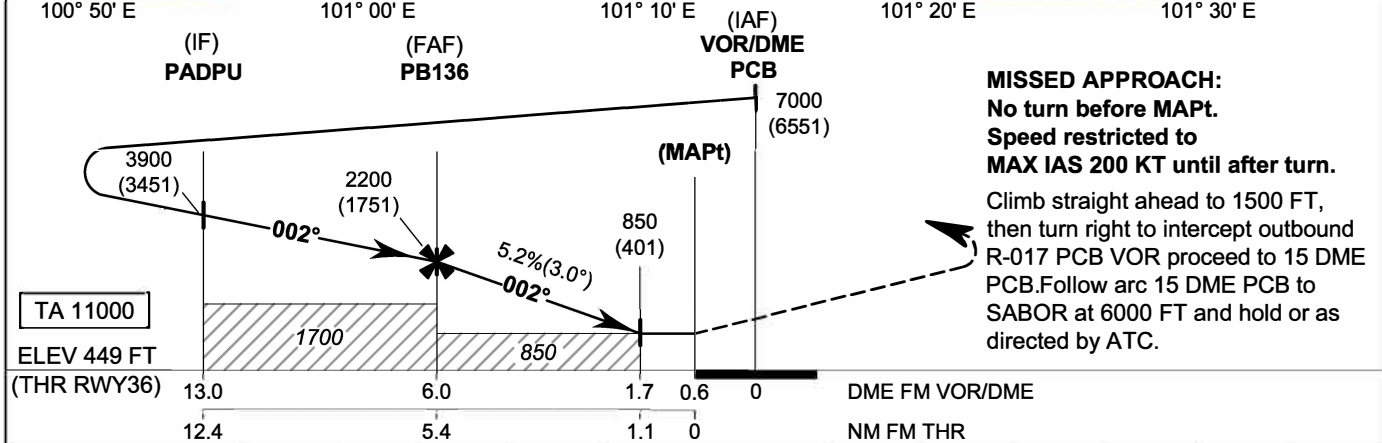


MISSED APPROACH:
No turn before MAPt.
Speed restricted to
MAX IAS 200 KT until after turn.
Climb straight ahead to 1500 FT,
then turn right to intercept outbound
R-017 PCB VOR proceed to 15 DME
PCB. Follow arc 15 DME PCB to
SABOR at 6000 FT and hold or as
directed by ATC.



OCA/H	A	B	C	D	Distance (PCB)	FAF	5 D	4 D	3 D	2 D	1.7 D	
Straight - in Approach	850 (401)				Altitude (Height)	2200 (1751)	1890 (1441)	1575 (1126)	1260 (811)	940 (491)	850 (401)	
Circling (OCH AAL)	1200 (750)				Ground speed	knot	70	90	100	120	140	160
* FOR CIRCLING RESTRICTIONS SEE VERSO					Rate of descent (5.2%)	(ft/min)	369	474	527	632	737	843