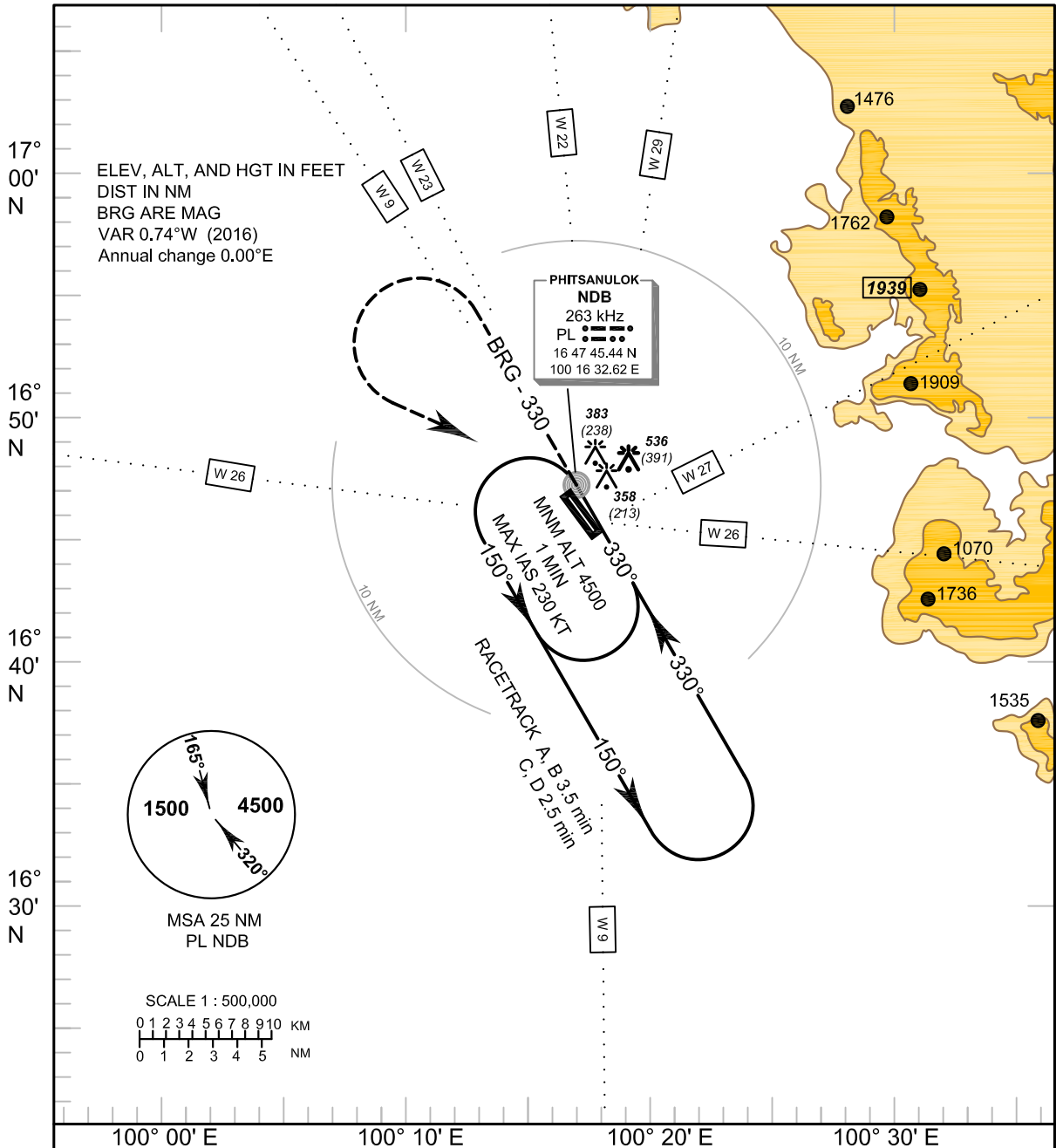


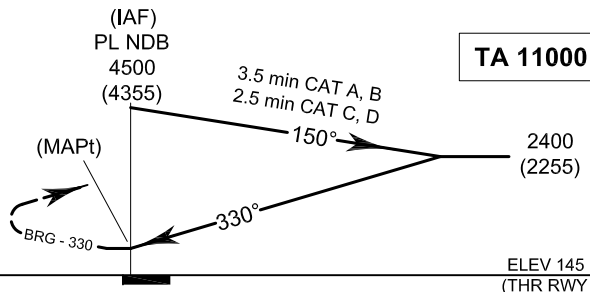
**INSTRUMENT AERODROME ELEV 145 FT**  
**APPROACH HEIGHTS RELATED TO**  
**CHART - ICAO AERODROME ELEV**

APP : 120.7, 284.0  
 TWR : 118.9, 236.6  
 GND : 121.9

**PHITSANULOK/Phitsanulok (VTPP)**  
**NDB RWY32**



**Missed Approach :**  
**No turn before MAPt.**  
 Climb on BRG - 330 until 2500 FT,  
 then turn left to PL NDB at 4500 FT  
 and hold or as directed by ATC.



ELEV 145 FT  
 (THR RWY 32)

OCA/H	A	B	C	D
Straight - in approach	790 (645)			
Circling (OCH AAL)	840 (695)		930 (785)	

CHANGE: MORSE CODE OF RADIO NAVIGATION AIDS ADDED.