

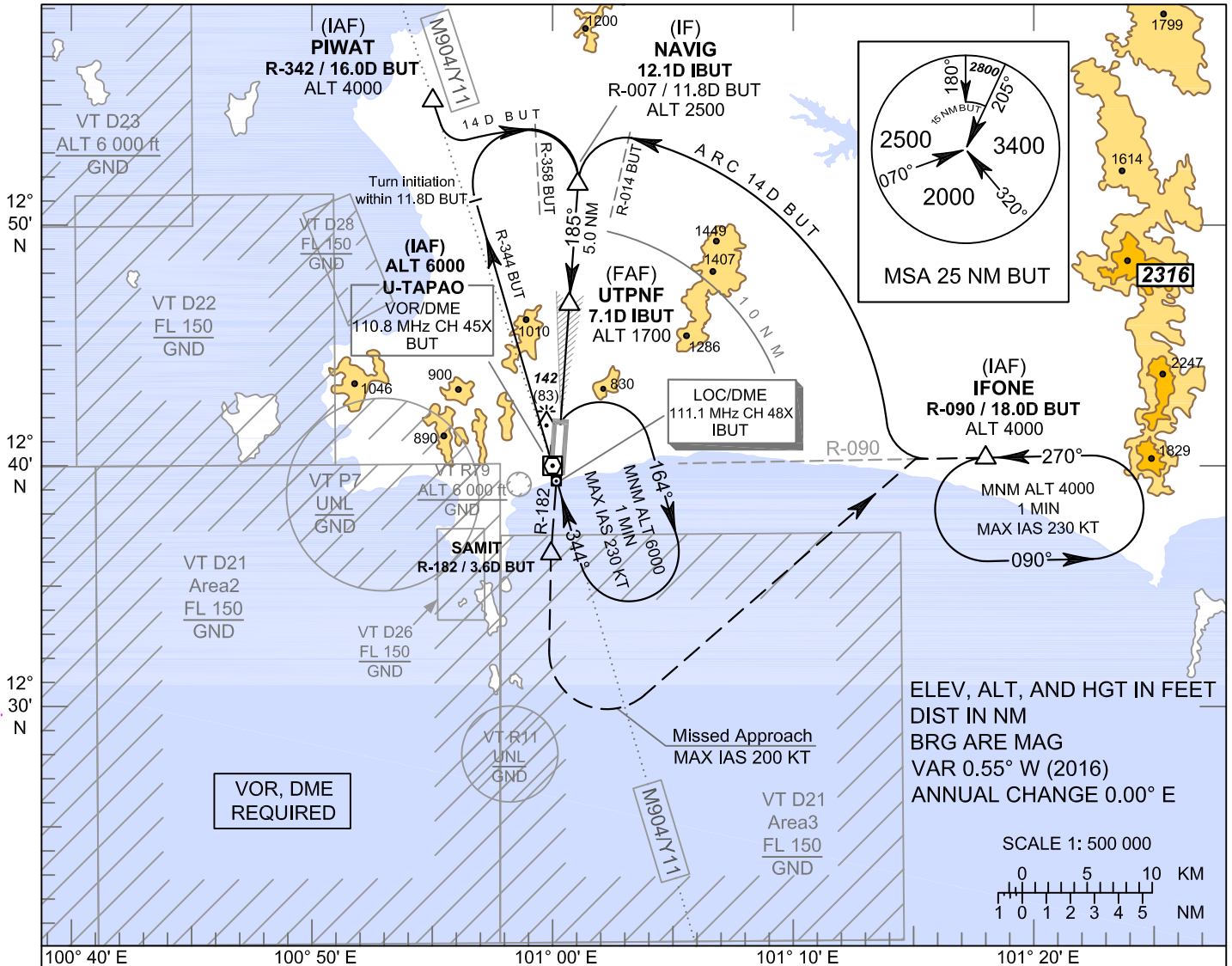
**INSTRUMENT
APPROACH
CHART - ICAO**

AERODROME ELEV 59 FT
HEIGHTS RELATED TO
THR RWY18 - ELEV 59 FT

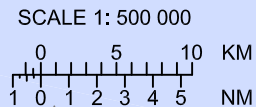
APP : 119.7 , 134.5
: 238.3 , 273.3
TWR : 118.1 , 118.3
: 227.0
GND : 121.9 , 275.8

**RAYONG / U-TAPAO RAYONG
PATTAYA INTL (VTBU)**

ILS or LOC RWY18

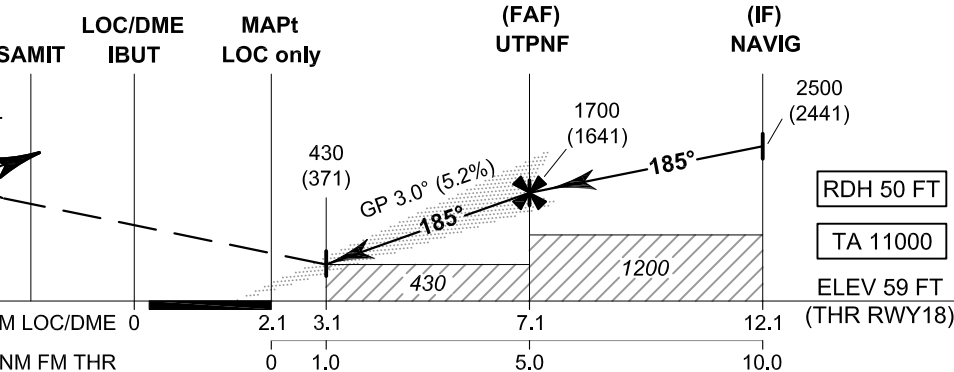


ELEV, ALT, AND HGT IN FEET
DIST IN NM
BRG ARE MAG
VAR 0.55° W (2016)
ANNUAL CHANGE 0.00° E



CAUTION: Aircraft shall avoid entering VT R11

MISSED APPROACH:
No turn before MAPt.
Speed restricted to
MAX IAS 200 KT until after turn.
Climb to intercept outbound R-182 BUT
VOR to SAMIT. After SAMIT and ALT
passing 1500 FT, turn left to intercept
outbound R-090 BUT VOR, then
proceed to IFONE and hold
or as directed by ATC.



OCA/H		A	B	C	D	GSOUT	Distance (IBUT)	3.1 D	4 D	5 D	6 D	FAF	
Straight - in Approach	CAT I	340 (281)					Altitude (Height)	430 (371)	710 (651)	1025 (966)	1340 (1281)	1700 (1641)	
		LOC only		430 (371)		Ground speed		knot	70	90	100	120	140
Circling (OCH AAL)		1200 (1141)		1450 (1391)		Rate of descent (5.2%)	(ft/min)	369	474	527	632	737	843