

**STANDARD DEPARTURE CHART  
INSTRUMENT (SID) - ICAO**

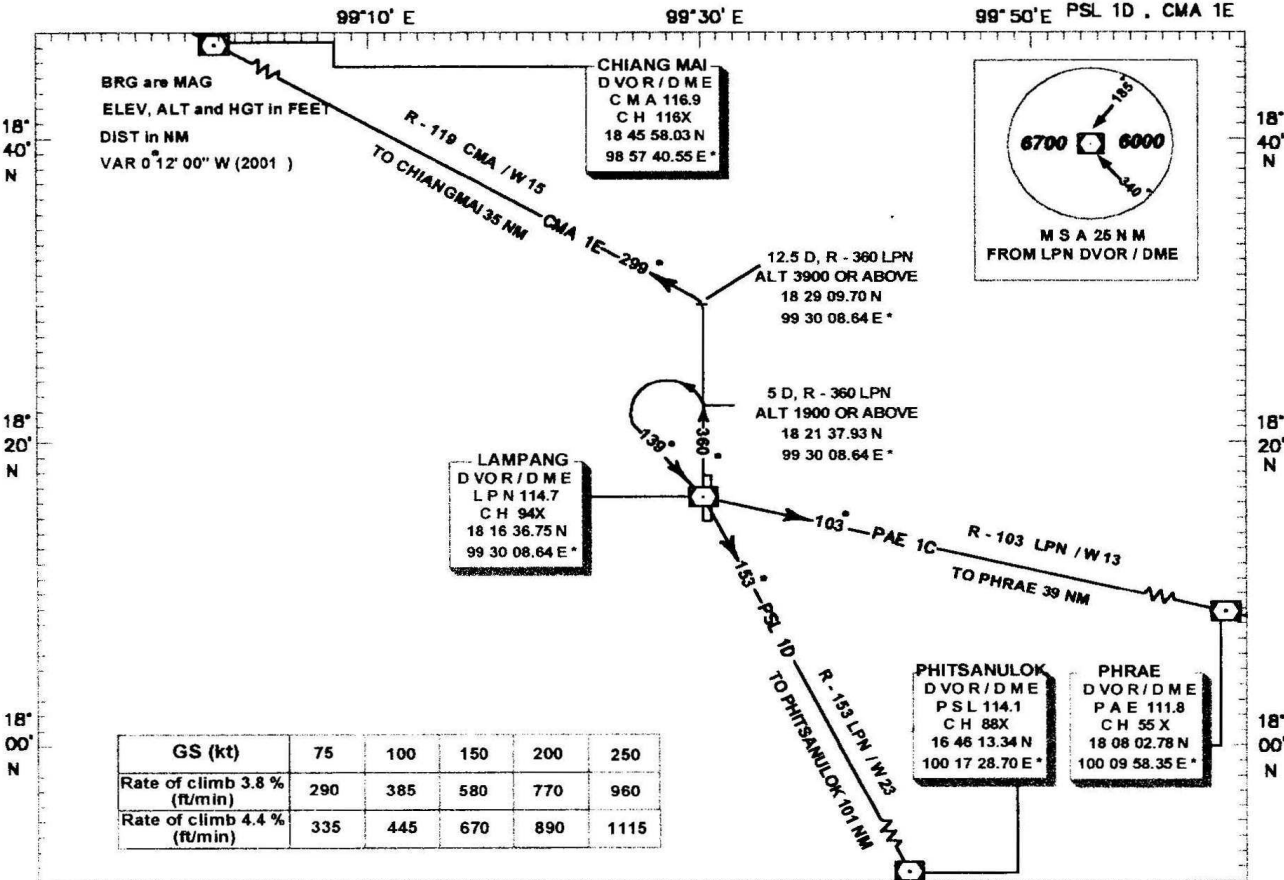
**TRANSITION ALTITUDE  
11 000 ft**

**APP 119.3  
TWR 122.3, 236.6**

**LAMPANG/Lampang  
RWY 36**

**PAE 1C**

**PSL 1D . CMA 1E**



**PHRAE ONE CHARLIE  
(PAE 1C)**

- MINIMUM DESIGN CLIMB GRADIENT 3.8 %
- AFTER DEPARTURE CLIMB ON TRACK-360° MAG UNTIL REACHING ALT 1900 FEET OR ABOVE W/ 5 DME
- TURN LEFT AND TRACK-139° MAG TO LPN DVOR/DME
- LEAVE LPN DVOR/DME TURN LEFT CLIMB ON R-103 LPN FOR ALT 11000 FEET TO PAE DVOR/DME

**PHITSANULOK ONE DELTA  
(PSL 1D)**

- MINIMUM DESIGN CLIMB GRADIENT 3.8 %
- AFTER DEPARTURE CLIMB ON TRACK-360° MAG UNTIL REACHING ALT 1900 FEET OR ABOVE W/ 5 DME
- TURN LEFT AND TRACK-139° MAG TO LPN DVOR/DME
- LEAVE LPN DVOR/DME TURN RIGHT CLIMB ON R-153 LPN FOR ALT 11000 FT TO PSL DVOR/DME

**CHIANG MAI ONE ECHO  
(CMA 1E)**

- MINIMUM DESIGN CLIMB GRADIENT 3.8 % UNTIL ALT 1900 FEET OR ABOVE W/ 5 DME THEN 4.4 %
- AFTER DEPARTURE CLIMB ON TRACK-360° MAG UNTIL REACHING ALT 1900 FEET OR ABOVE W/ 5 DME
- CONTINUING CLIMB ON TRACK-360° MAG TO INTERCEPT TRACK-299° MAG W/ 12.5 DME AND PROCEED ON TRACK-360° MAG (R-119 CMA) FOR 11000 FT TO CMA DVOR/DME