

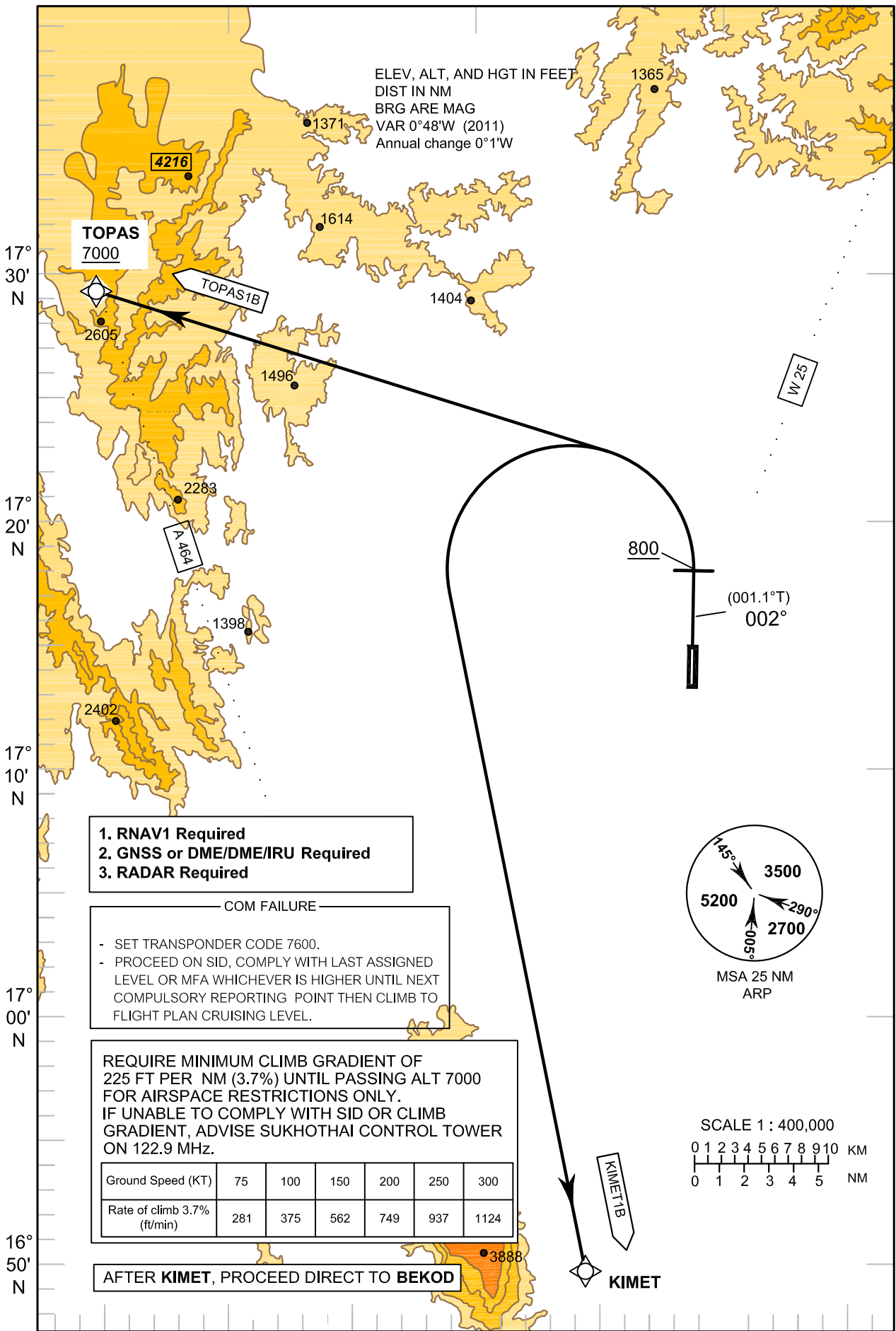
**STANDARD DEPARTURE CHART -
INSTRUMENT (SID) - ICAO**

TRANSITION ALTITUDE
11000 FT

APP : 120.7
TWR : 122.9

**SUKHOTHAI/Sukhothai (VTPO)
RNAV RWY36**

KIMET1B TOPAS1B



ELEV, ALT, AND HGT IN FEET
DIST IN NM
BRG ARE MAG
VAR 0°48'W (2011)
Annual change 0°1'W

- 1. RNAV1 Required
- 2. GNSS or DME/DME/IRU Required
- 3. RADAR Required

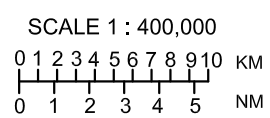
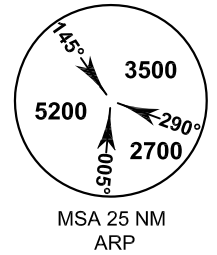
COM FAILURE

- SET TRANSPONDER CODE 7600.
- PROCEED ON SID, COMPLY WITH LAST ASSIGNED LEVEL OR MFA WHICHEVER IS HIGHER UNTIL NEXT COMPULSORY REPORTING POINT THEN CLIMB TO FLIGHT PLAN CRUISING LEVEL.

REQUIRE MINIMUM CLIMB GRADIENT OF 225 FT PER NM (3.7%) UNTIL PASSING ALT 7000 FOR AIRSPACE RESTRICTIONS ONLY. IF UNABLE TO COMPLY WITH SID OR CLIMB GRADIENT, ADVISE SUKHOTHAI CONTROL TOWER ON 122.9 MHz.

Ground Speed (KT)	75	100	150	200	250	300
Rate of climb 3.7% (ft/min)	281	375	562	749	937	1124

AFTER KIMET, PROCEED DIRECT TO BEKOD



17° 30' N
17° 20' N
17° 10' N
17° 00' N
16° 50' N

099° 30' E 099° 40' E 099° 50' E