

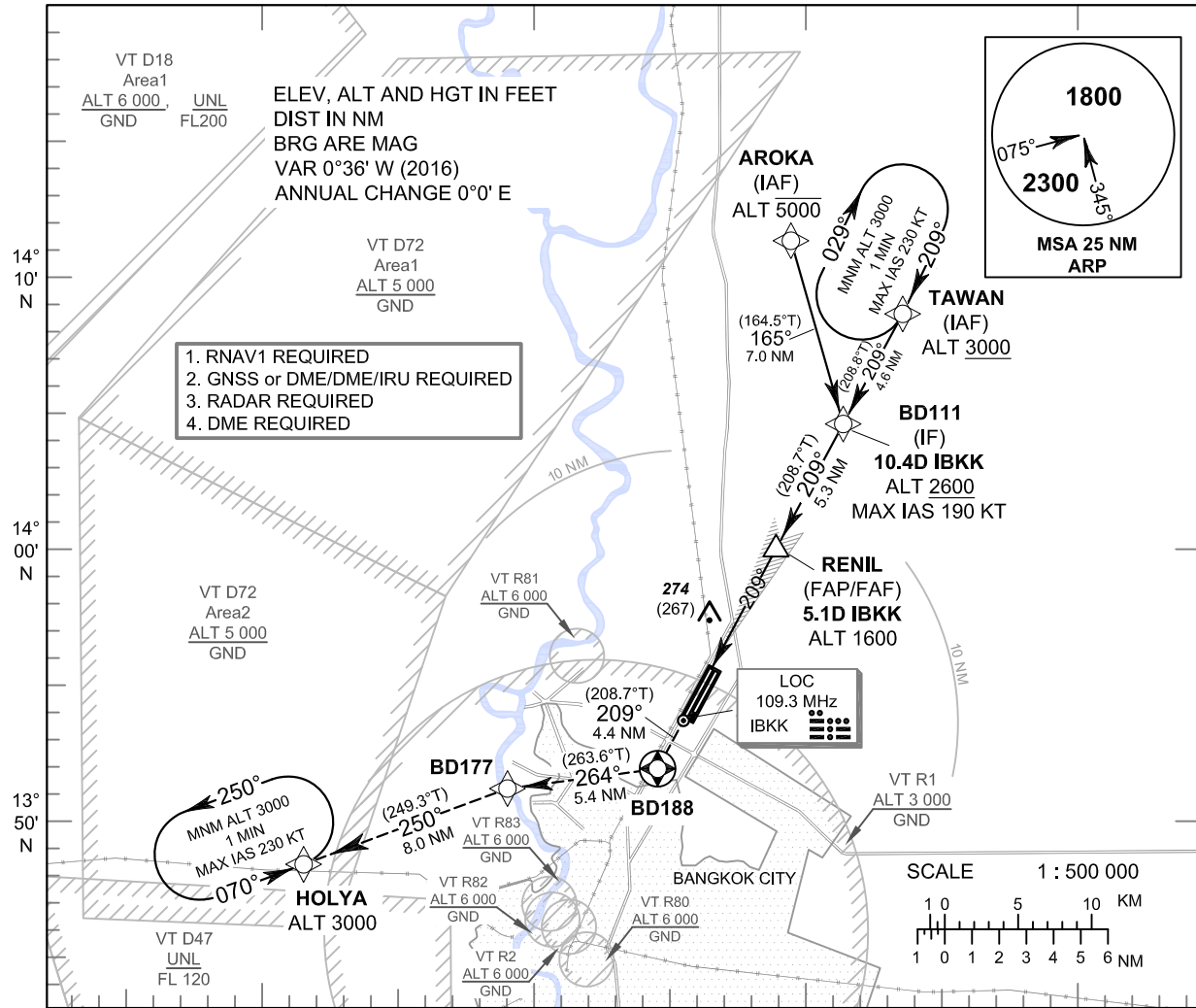
INSTRUMENT APPROACH CHART - ICAO **AERODROME ELEV 9 FT**
 HEIGHTS RELATED TO
 THR RWY21R - ELEV 7 FT

APP	: 119.1, 262.5
	: 119.4, 262.5
	: 120.3, 262.5
	: 128.95, 262.5
	: 122.35, 262.5
	: 124.35, 262.5
	: 125.2, 262.5
DAR	: 133.0, 262.5
TWR	: 118.1, 236.6
ATIS	: 126.4, 344.6

BANGKOK / Don Mueang Intl (VTBD)

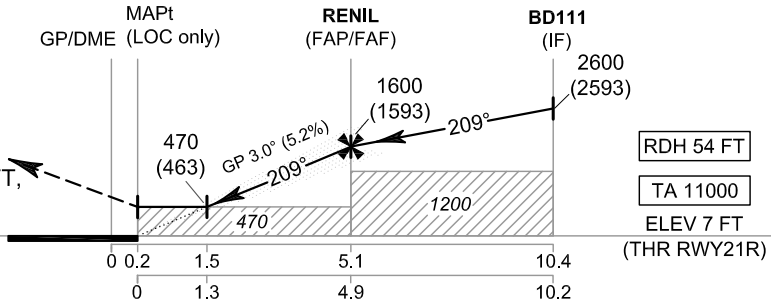
ILS or LOC z RWY21R

CAT II



MISSED APPROACH :
No turn before MAPt
(for LOC only).

Climb on track 209° to BD188,
 then turn right to BD177,
 then proceed to HOLYA at 3000 FT,
 and hold or as directed by ATC.



CHANGE: APP FREQ, DAR, FREQ.

OCA/H	A	B	C	D	GS OUT	Distance (IBKK)	1.5 D	2 D	3 D	4 D	5 D	FAF	
						Straight - in Approach	CAT I	220 (213)					Altitude (Height)
LOC only	470 (463)					Ground speed	knot	70	90	100	120	140	160
Circling (OCH AAL)	700 (691)	800 (791)	1100 (1091)		Rate of descent (5.2%)	(ft/min)	369	474	527	632	737	843	