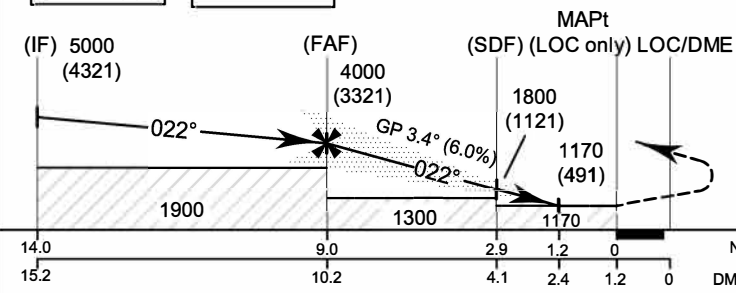


100° 30' E 100° 40' E 100° 50' E 101° 00' E

TA 11 000 **RDH 58 FT**



Missed Approach :
No turn before MAPt (for LOC only).
Speed restricted to
MAX IAS 210 KT until after turn.
 Climb on track 022° to 1900 FT,
 then turn right direct to **ASUBI** at 5000
 FT and hold or as directed by ATC.

ELEV 679 FT
 (THR RWY 02)

OCA/H	A	B	C	D	GS out	Distance (INAN)	FAF	10 D	9 D	8 D	7 D	6 D	5 D	4 D	3 D	2.4 D
						Altitude (Height)	(3321)	(3261)	(2896)	(2531)	(2166)	(1801)	(1436)	(1071)	(706)	(491)
Straight-in approach CAT I	1030 (351)					4000 (3321)	3940 (3261)	3575 (2896)	3210 (2531)	2845 (2166)	2480 (1801)	2115 (1436)	1750 (1071)	1385 (706)	1170 (491)	
LOC Only	1170 (491)							knot	70	90	100	120	140	160		
Circling (OCH AAL)	1500 (815)	2100 (1415)								(ft/min)	421	541	602	722	842	963