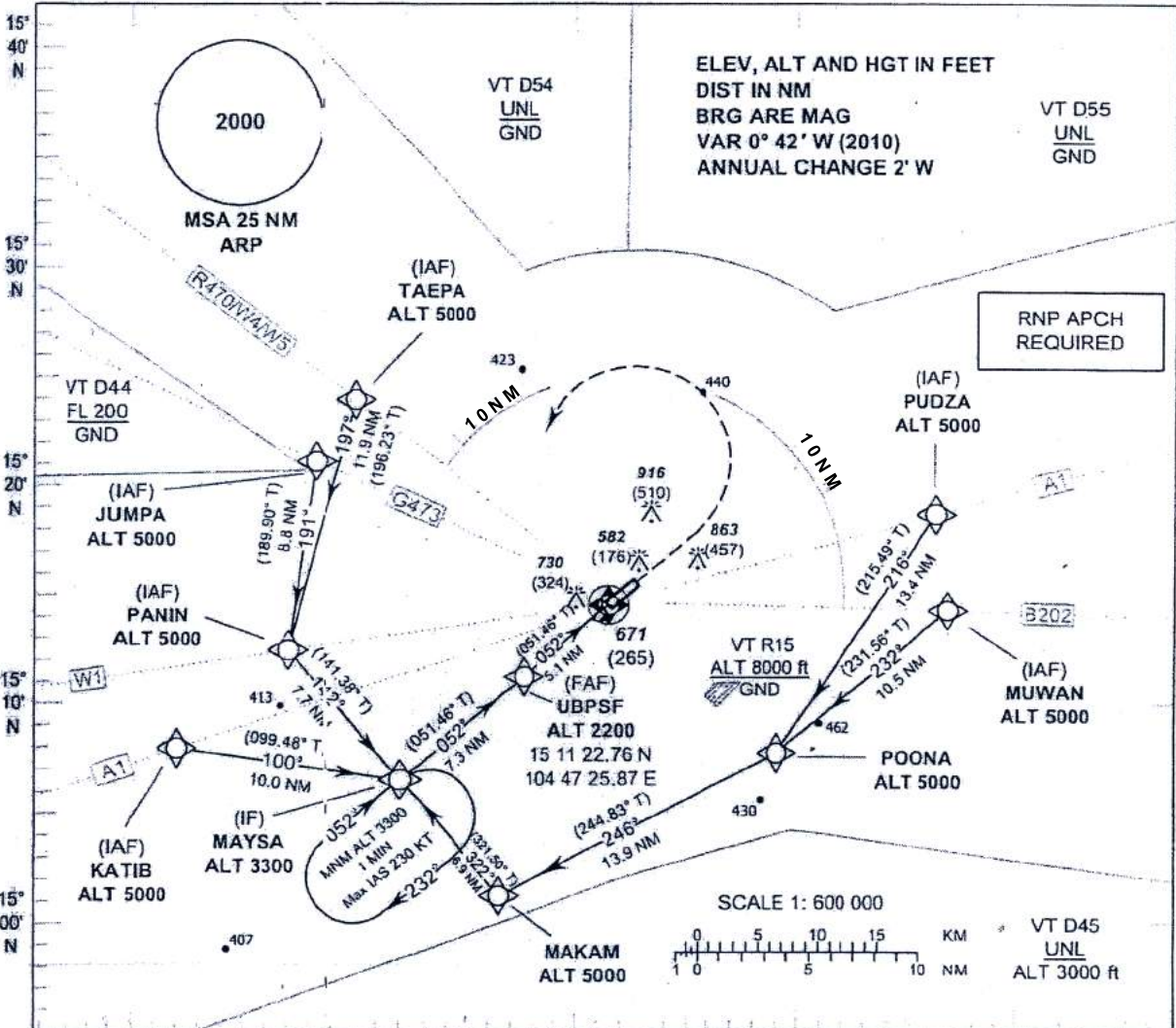


INSTRUMENT APPROACH CHART - ICAO

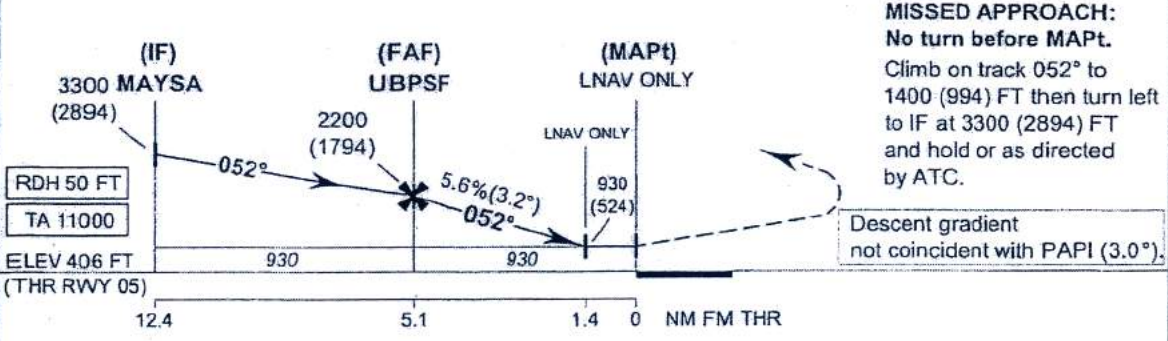
**AERODROME ELEV 406 FT
HEIGHTS RELATED TO AERODROME ELEV
BARO-VNAV NA BELOW 0°C**

APP : 123.5 , 257.8
TWR : 119.9 , 274.5
GND : 121.9 , 275.8

**UBON RATCHATHANI /
Ubun Ratchathani (VTUU)
RNAV (GNSS) RWY05**



104° 30' E 104° 40' E 104° 50' E 105° 00' E 105° 10' E



MISSED APPROACH:
No turn before MAPt.
Climb on track 052° to 1400 (994) FT then turn left to IF at 3300 (2894) FT and hold or as directed by ATC.

Descent gradient not coincident with PAPI (3.0°).

OCA/H	A	B	C	D	NM to THR 05	FAF	5 NM	4 NM	3 NM	2 NM	1.4 NM	
LNAV / VNAV	860 (454)	920 (514)				Altitude (Height)	2200 (1794)	2155 (1749)	1815 (1409)	1475 (1069)	1135 (729)	930 (524)
LNAV	930 (524)				Ground speed (GS)	knot	100	120	140	160	180	200
Circling (OCH AAL)	1350 (944)				Rate of descent	(ft/min)	565	680	795	905	1020	1135