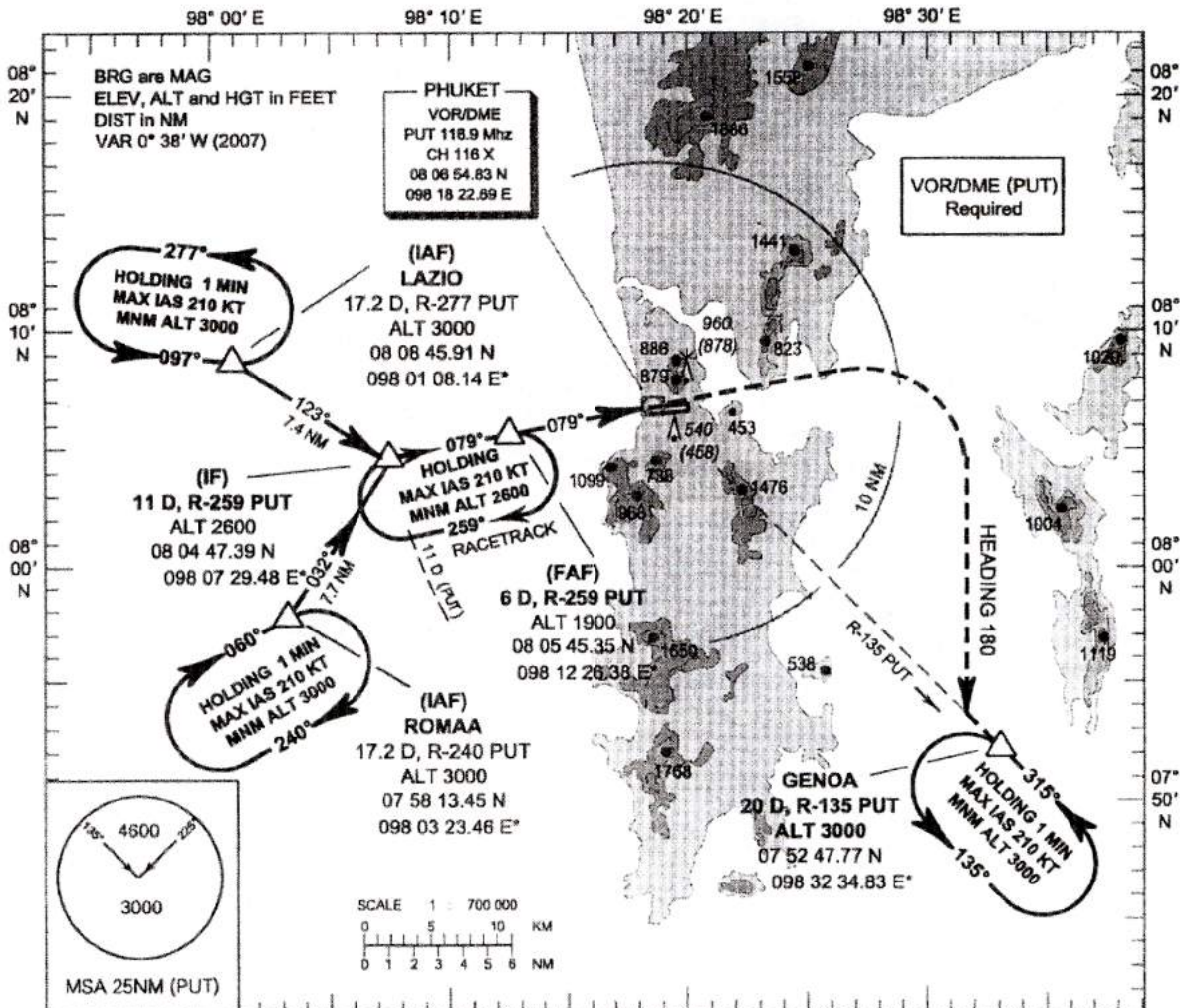


INSTRUMENT AERODROME ELEV. 82 ft
 APPROACH HEIGHTS RELATED TO
 CHART - ICAO THR RWY 09 ELEV 19 ft

APP : 124.7 , 284.0
 TWR : 118.1 , 236.6

PHUKET / Phuket Intl (VTSP)
 VOR Z RWY 09



TA 11000 ft

MISSED APPROACH :
 Climb straight ahead to 2500 (2481) ft then turn right continue climb on heading 180 to intercept R-135 (PUT) direct to GENOA at 3000 (2981) ft and hold or as directed by ATC.

		IF	FAF	MAPt									
ELEV 19 ft (THR RWY 09)		2600 (2581)	1900 (1881)	900 (881)									
		10.8	5.8	2.6	1.3	0	NM FM THR 09						
		11.0	6.0	2.8	1.5	0.2	DME FM VOR/DME (PUT)						
		Distance (PUT)				FAF	5 D	4 D	3 D	2.8 D			
OCA/H		A	B	C	D	1900 (1881)	1600 (1581)	1280 (1261)	960 (941)	900 (881)			
Straight-in approach		900 (881)				Ground speed (GS)	knot	100	120	140	160	180	200
Circling (OCH AAL)		1300 (1218)		1400 (1318)		Rate of descent (ft/min)	530	635	745	850	955	1060	
REMARK : Circling to the Left (North of aerodrome) only.		FAF-MAPt 4.5 NM				(min's)	2:42	2:15	1:56	1:42	1:30	1:21	