

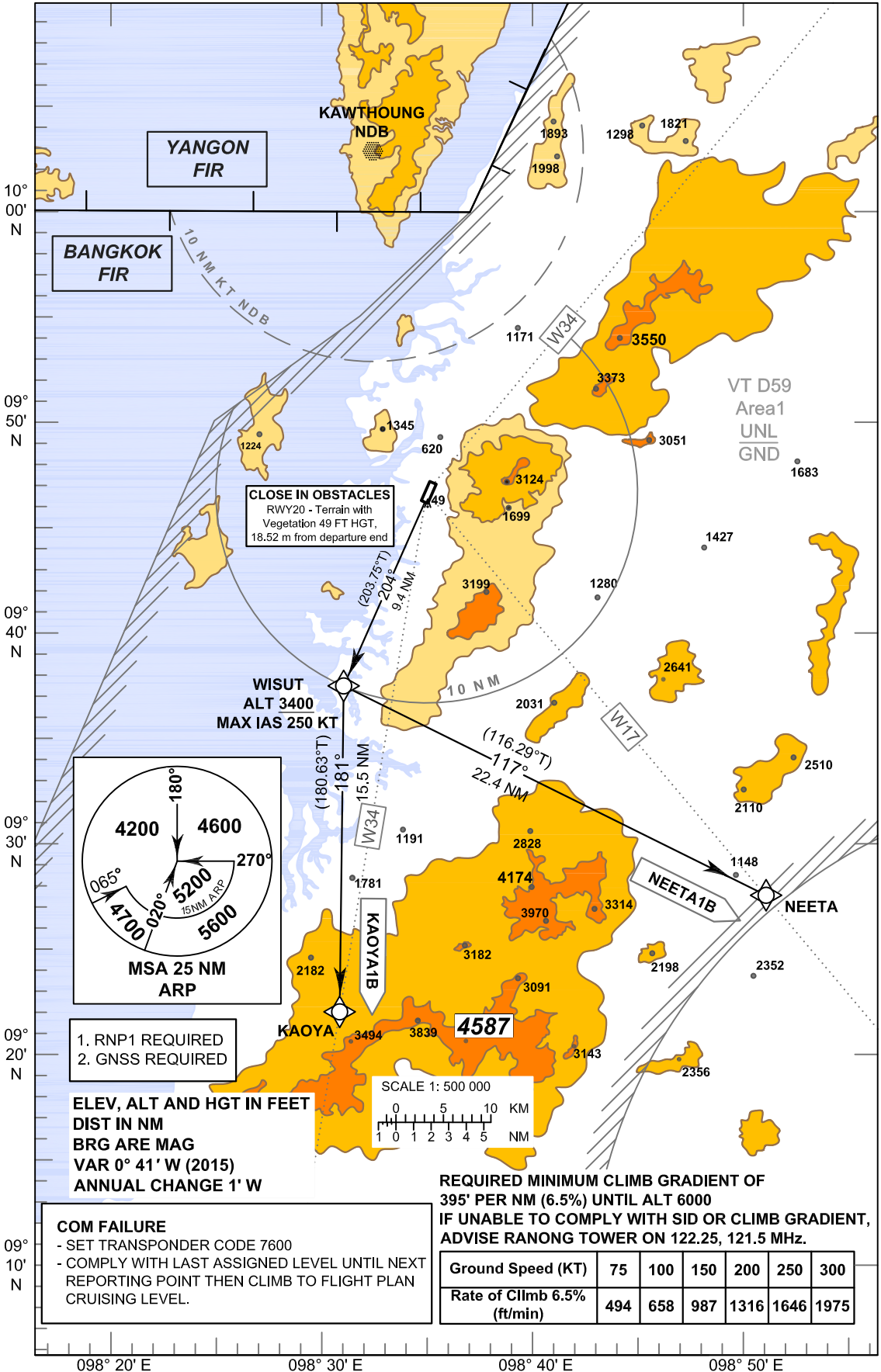
**STANDARD DEPARTURE CHART -  
INSTRUMENT (SID) - ICAO**

TRANSITION ALTITUDE  
11000 FT

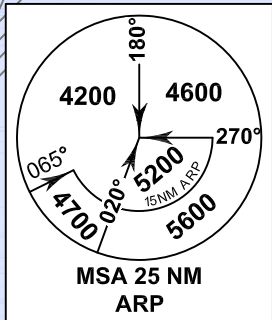
APP : 125.1  
TWR : 122.25 , 121.5

**RANONG / Ranong (VTSR)  
RNAV RWY20**

**KAOYA1B, NEETA1B**



**CLOSE IN OBSTACLES**  
RWY20 - Terrain with  
Vegetation 49 FT HGT,  
18.52 m from departure end



- 1. RNP1 REQUIRED
- 2. GNSS REQUIRED

**ELEV, ALT AND HGT IN FEET  
DIST IN NM  
BRG ARE MAG  
VAR 0° 41' W (2015)  
ANNUAL CHANGE 1' W**

**COM FAILURE**  
- SET TRANSPONDER CODE 7600  
- COMPLY WITH LAST ASSIGNED LEVEL UNTIL NEXT REPORTING POINT THEN CLIMB TO FLIGHT PLAN CRUISING LEVEL.

**REQUIRED MINIMUM CLIMB GRADIENT OF  
395' PER NM (6.5%) UNTIL ALT 6000  
IF UNABLE TO COMPLY WITH SID OR CLIMB GRADIENT,  
ADVISE RANONG TOWER ON 122.25, 121.5 MHZ.**

<b>Ground Speed (KT)</b>	75	100	150	200	250	300
<b>Rate of Climb 6.5% (ft/min)</b>	494	658	987	1316	1646	1975