

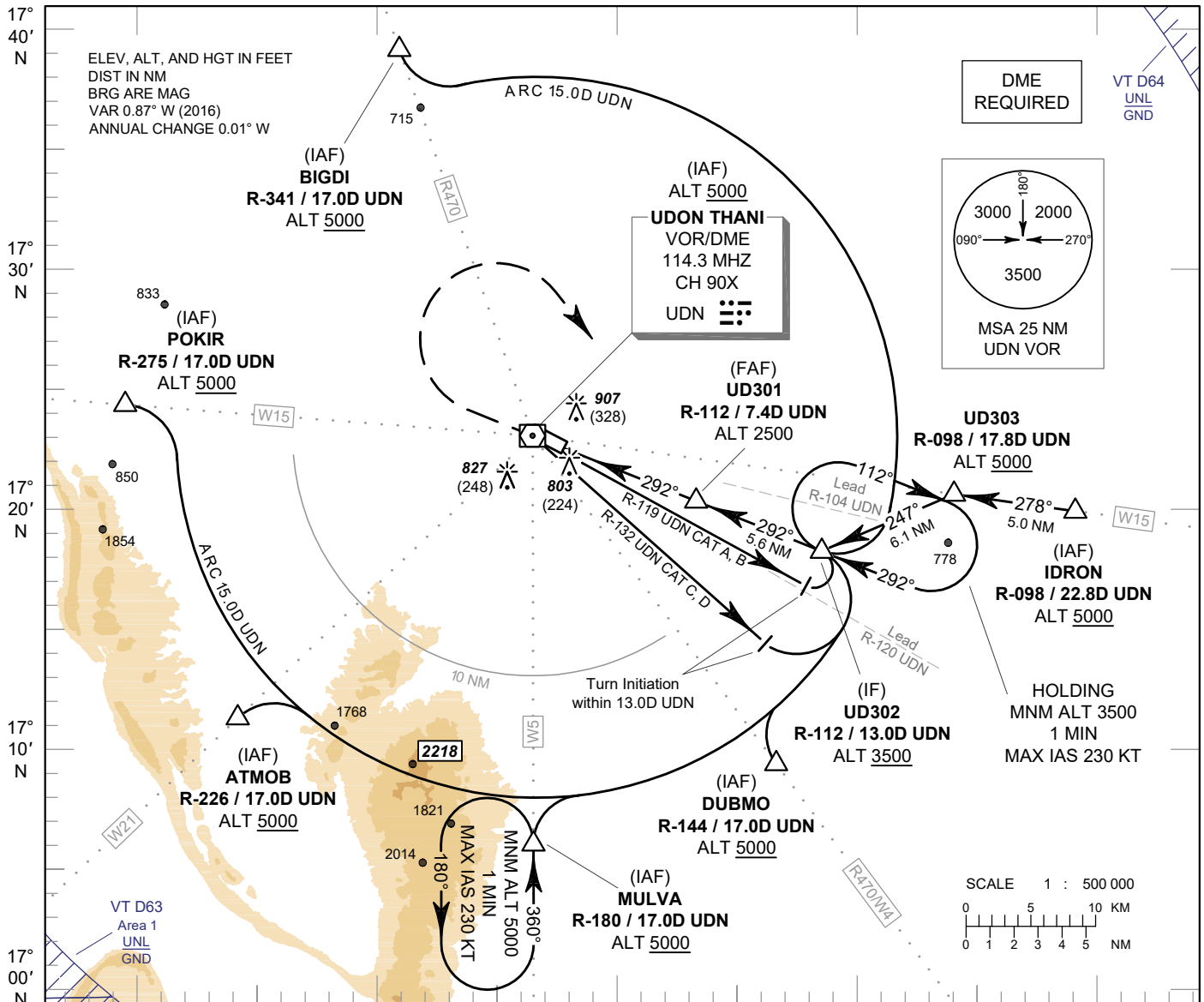
**INSTRUMENT  
APPROACH  
CHART - ICAO**

**AERODROME ELEV 579 FT**  
HEIGHTS RELATED TO  
AERODROME ELEV

APP : 126.2, 265.9  
TWR : 122.5, 355.4  
GND : 121.9, 275.8  
ATIS : 127.6

**UDON THANI / Udon Thani (VTUD)**

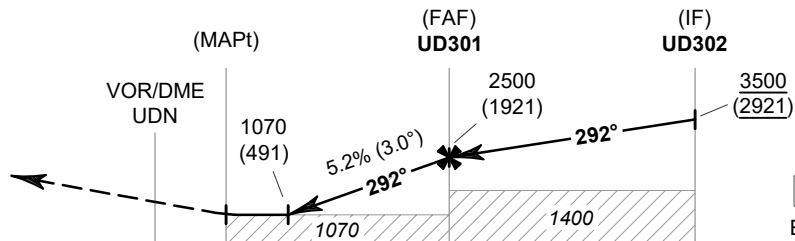
**VOR RWY30**



**MISSED APPROACH :**

**No turn before MAPt.**

Climb straight ahead to 1500 FT, then turn right to intercept outbound R-112 UDN VOR, then proceed to UD302 at minimum 3500 FT and hold or as directed by ATC.



TA 11000  
ELEV 579 FT  
(THR RWY30)

DME FM VOR/DME	0	1.5	2.9	7.4	13.0
NM FM THR	0	1.4	5.9	11.5	

OCA/H	A	B	C	D	Distance (UDN)	2.9D	3D	4D	5D	6D	7D	FAF
Straight - in Approach	1070 (491)				Altitude (Height)	1070 (491)	1100 (521)	1420 (841)	1735 (1156)	2050 (1471)	2365 (1786)	2500 (1921)
Circling* (OCH AAL)	1300 (721)				Ground Speed	knot	70	90	100	120	140	160
*FOR CIRCLING RESTRICTIONS SEE VERSO					Rate of Descent 5.2%	ft/min	369	474	527	632	737	843

CHANGE : REVISED CHART.