

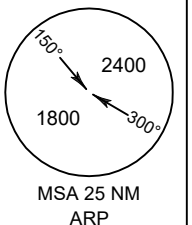
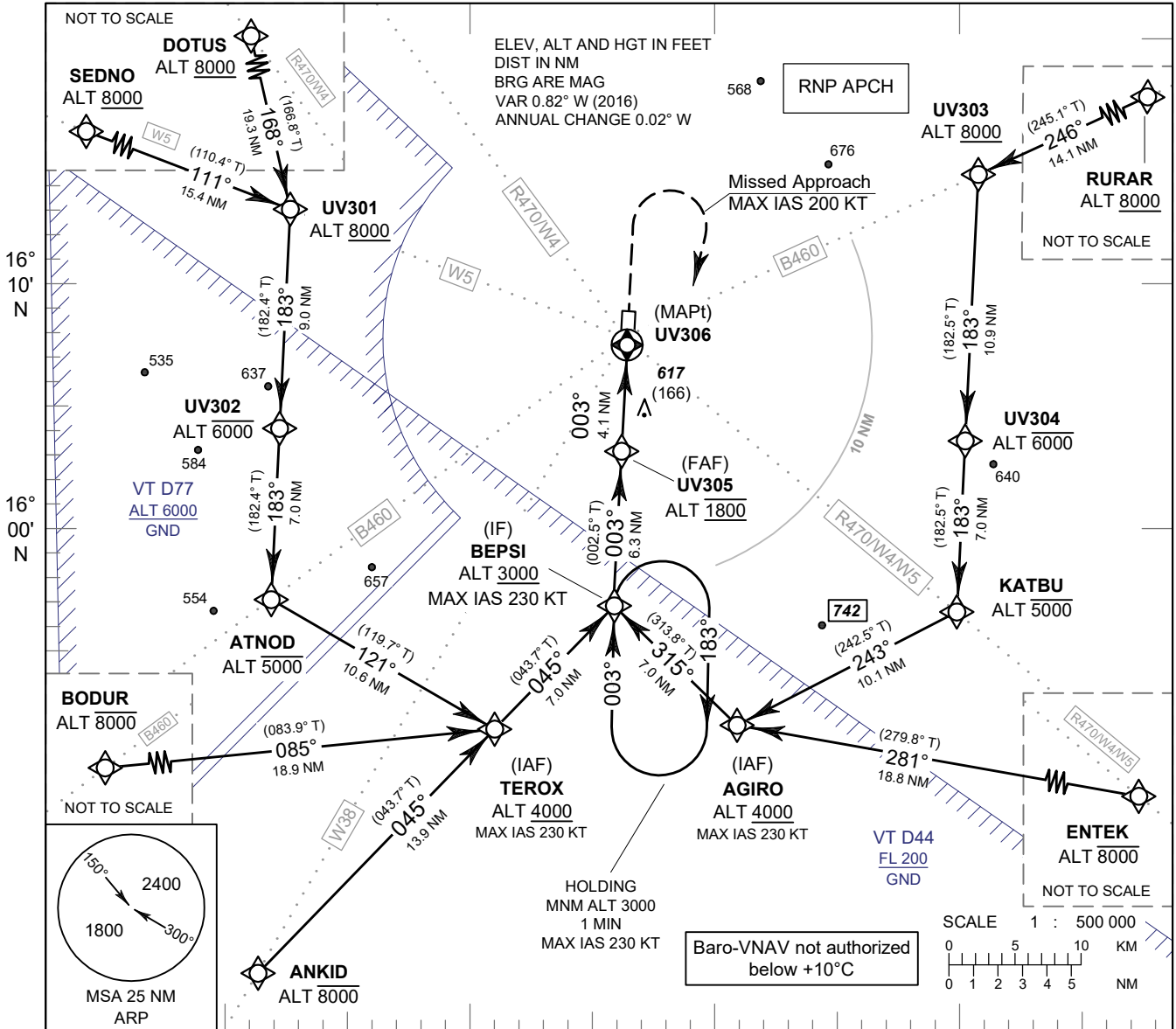
**INSTRUMENT
APPROACH
CHART - ICAO**

**AERODROME ELEV 451 FT
HEIGHTS RELATED TO
THR RWY36 - ELEV 451 FT**

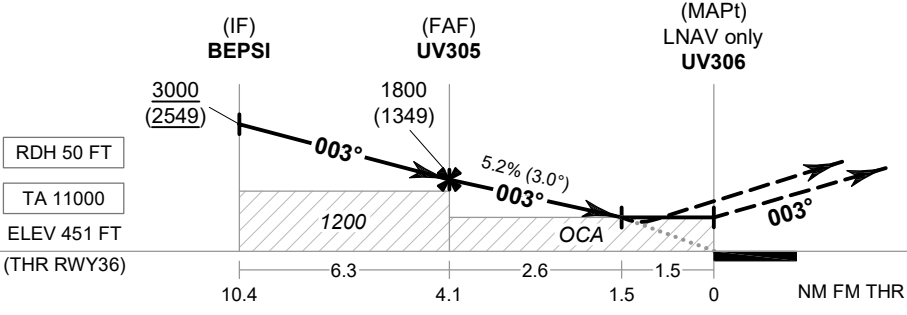
APP : 125.4 MHz
TWR : 119.75 , 236.6 MHz
ATIS : 319 kHz

ROI ET / Roi Et (VTUV)

RNAV (GNSS) RWY36



103° 30' E 103° 40' E 103° 50' E 104° 00' E



MISSED APPROACH :
No turn before MAPt.
Speed restricted to **MAX IAS 200 KT** until after turn.
Climb on track 003° to 1500 FT, then turn right direct to BEPSI at minimum 3000 FT and hold or as directed by ATC.

OCA/H	A	B	C	D	NM to NEXT WPT	FAF	4 NM	3 NM	2 NM	1.5 NM			
LNAV/VNAV	800 (349)				Altitude (Height)	1800 (1349)	1765 (1314)	1450 (999)	1135 (684)	970 (519)			
LNAV	970 (519)				Ground Speed	knot	70	90	100	120	140	160	
Circling (OCH AAL)	1200 (749)				Rate of Descent	FAF-MAPt 5.2%	ft/min	369	474	527	632	737	843

CHANGE : NEW CHART.