

**STANDARD ARRIVAL CHART-
INSTRUMENT (STAR) - ICAO**

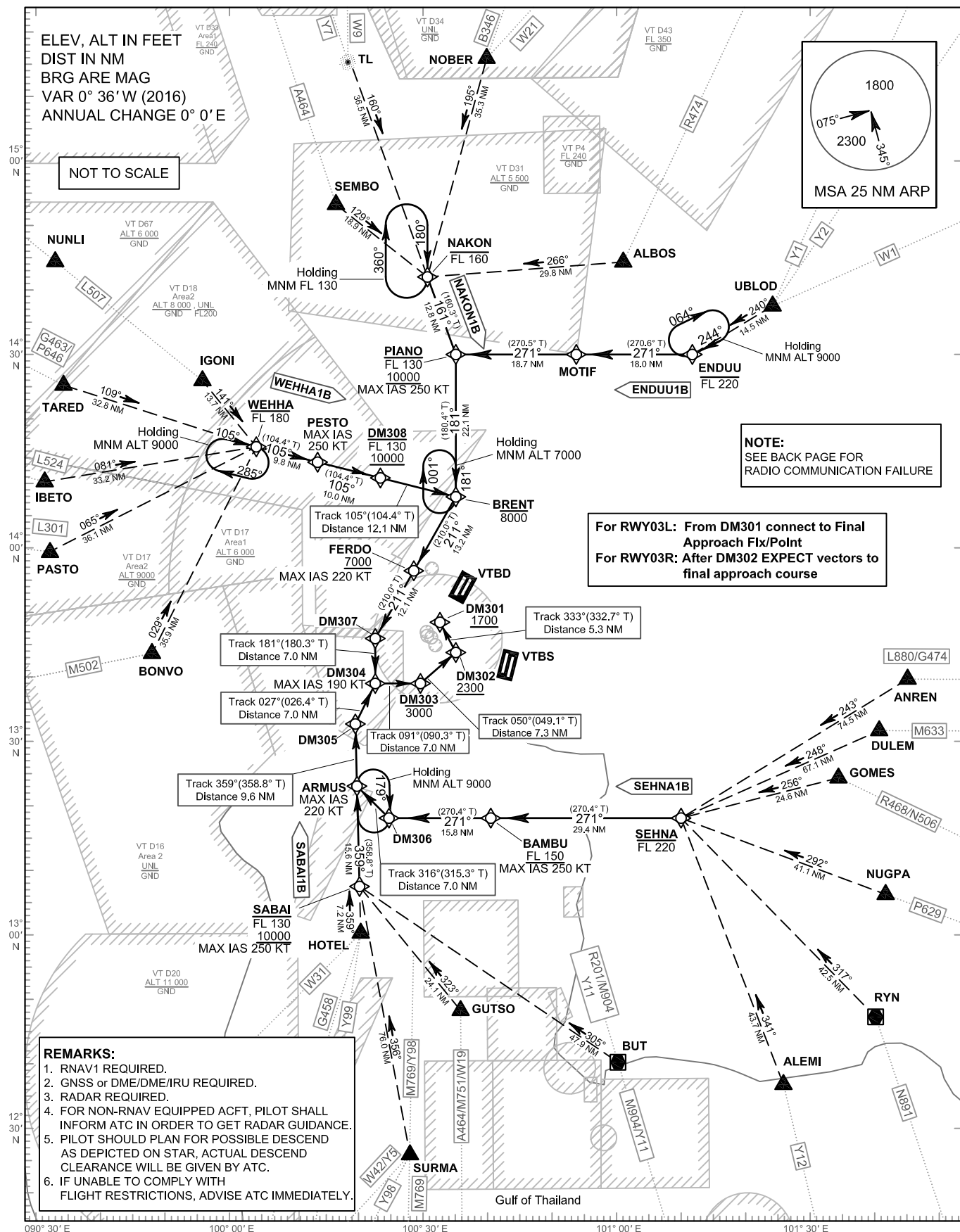
TRANSITION ALTITUDE
11000 FT

SPEED RESTRICTION
MAX IAS 250 KT AT OR
BELOW ALT 10000 FT
UNLESS OTHERWISE
AUTHORIZED BY ATC.

APP : 119.1, 262.5
: 119.4, 262.5
: 120.3, 262.5
: 128.95, 262.5
: 122.35, 262.5
: 124.35, 262.5
: 125.2, 262.5
DAR : 133.0, 262.5
TWR : 118.1, 236.6
ATIS : 126.4, 344.6

**BANGKOK/Don Mueang Intl (VTBD)
RNAV RWY03L/03R**

ENDUU1B NAKON1B
SABAI1B SEHNA1B WEHHA1B



NOTE:
SEE BACK PAGE FOR
RADIO COMMUNICATION FAILURE

For RWY03L: From DM301 connect to Final Approach Fix/Point
For RWY03R: After DM302 EXPECT vectors to final approach course

REMARKS:

1. RNAV1 REQUIRED.
2. GNSS or DME/DME/IRU REQUIRED.
3. RADAR REQUIRED.
4. FOR NON-RNAV EQUIPPED ACFT, PILOT SHALL INFORM ATC IN ORDER TO GET RADAR GUIDANCE.
5. PILOT SHOULD PLAN FOR POSSIBLE DESCEND AS DEPICTED ON STAR, ACTUAL DESCEND CLEARANCE WILL BE GIVEN BY ATC.
6. IF UNABLE TO COMPLY WITH FLIGHT RESTRICTIONS, ADVISE ATC IMMEDIATELY.

CHANGE: APP FREQ, DAR, FREQ.