

## VTUV AD 2.1 AERODROME LOCATION INDICATOR AND NAME

## VTUV - ROI ET / ROI ET AIRPORT

## VTUV AD 2.2 AERODROME GEOGRAPHICAL AND ADMINISTRATIVE DATA

1	ARP coordinates and site at AD	160700.34N 1034625.67E Centre of RWY 1050 M. from THR RWY 18
2	Direction and distance from (city)	19 KM E from city
3	Elevation/Reference temperature	451 FT /28°C
4	Geoid Undulation at AD ELEV PSN	NIL
5	MAG VAR/Annual change	0.82°W(2016) /0.02°W
6	AD Administration, address, telephone, telefax, telex, AFS	Director of Roi Et Airport Roi Et Airport, Roi Et-Phonthong Road, Nongphok, Thawatburi, Roi Et, 45170 Thailand Tel: +664 351 8246-8 Fax: +664 351 8253 AFS: VTUVYDYX
7	Types of traffic permitted (IFR/VFR)	IFR/VFR
8	Remarks	Operator: Department of Airports

## VTUV AD 2.3 OPERATIONAL HOURS

1	Aerodrome Operator	2300-1400
2	Customs and immigration	NIL
3	Health and sanitation	NIL
4	AIS Briefing Office	0100-0900 (Mon-Fri)*
5	ATS Reporting Office (ARO)	2200-1500
6	MET Briefing Office	NIL
7	ATS	2300-1100
8	Fuelling	NIL
9	Handling	NIL
10	Security	NIL
11	De-icing	NIL
12	Remarks	*Other this period and holiday 3 HRS PN to ATC

## VTUV AD 2.4 HANDLING SERVICES AND FACILITIES

1	Cargo-handling facilities	NIL
2	Fuel/oil types	NIL
3	Fuelling facilities/capacity	NIL
4	De-icing facilities	NIL
5	Hangar space for visiting aircraft	NIL
6	Repair facilities for visiting aircraft	NIL
7	Remarks	NIL

**VTUV AD 2.5 PASSENGER FACILITIES**

1	Hotels	In the city
2	Restaurants	In the city
3	Transportation	Taxi and car hire from the airport
4	Medical facilities	Hospital in the city
5	Bank and Post Office	Bank and Post office in the city
6	Tourist Office	In the city
7	Remarks	NIL

**VTUV AD 2.6 RESCUE AND FIRE FIGHTING SERVICES**

1	AD category for fire fighting	Category 6
2	Rescue equipment	Yes
3	Capability for removal of disabled aircraft	NIL
4	Remarks	NIL

**VTUV AD 2.7 SEASONAL AVAILABILITY - CLEARING**

1	Types of clearing equipment	NIL
2	Clearance priorities	NIL
3	Remarks	The aerodrome is available all seasons.

**VTUV AD 2.8 APRONS, TAXIWAYS AND CHECK LOCATIONS/POSITIONS DATA**

1	Apron surface and strength	Surface: Concrete Strength: PCN 45/R/C/X/T
2	Taxiway width, surface and strength	Width: 23 M Surface: Concrete and asphalt Strength: PCN 42/F/C/X/T
3	Altimeter checkpoint location and elevation	NIL
4	VOR checkpoints	NIL
5	INS checkpoints	NIL
6	Remarks	NIL

**VTUV AD 2.9 SURFACE MOVEMENT GUIDANCE AND CONTROL SYSTEM AND MARKINGS**

1	Use of aircraft stand ID signs, TWY guide lines and visual docking/parking guidance system of aircraft stands	NIL
2	RWY and TWY markings and LGT	RWY and TWY: Marked and lighted
3	Stop bars	NIL
4	Remarks	NIL

VTUV AD 2.10 AERODROME OBSTACLES

In approach/TKOF areas			In circling areas and at AD		Remarks
1			2		3
RWY/Area affected	Obstacle type Elevation Markings/LGT	Coordinates	Obstacle type Elevation Markings/LGT	Coordinates	
a	b	c	a	b	
NIL	NIL	NIL	NIL	NIL	NIL

VTUV AD 2.11 METEOROLOGICAL INFORMATION PROVIDED

1	Associated MET Office	Aeronautical Meteorological Station-Roi Et, Lower Northeastern Meteorological Center, Thai Meteorological Department (TMD)
2	Hours of service MET Office outside hours	2200-1400 NIL
3	Office responsible for TAF preparation Periods of validity	Supply TAF from Lower Northeastern Meteorological Center 24 HR
4	Type of landing forecast Interval of issuance	TREND 1 HR
5	Briefing/consultation provided	Personal Consultation Tel: +664 351 9886 ext. 7408
6	Flight documentation Language(s) used	NIL
7	Charts and other information available for briefing or consultation	S, U85, Daily Weather Forecast, satellite and radar images
8	Supplementary equipment available for providing information	Automated Weather Observation System (AWOS)
9	ATS units provided with information	Roi Et TWR
10	Additional information (limitation of service, etc.)	NIL

VTUV AD 2.12 RUNWAY PHYSICAL CHARACTERISTICS

Designations RWY NR	TRUE BRG	Dimensions of RWY(M)	Strength (PCN) and surface of RWY and SWY	THR coordinates RWY end coordinates THR geoid undulation	THR elevation and highest elevation of TDZ of precision APP RWY
1	2	3	4	5	6
18	182.69°	2100x45	PCN 42/F/D/X/T Concrete and asphalt	160734.53N 1034627.20E	THR451 FT TDZ 451 FT
36	002.69°	2100x45	PCN 42/F/D/X/T Concrete and asphalt	160626.14N 1034624.15E	THR451 FT TDZ 451 FT

Slope of RWY-SWY	SWY dimensions (M)	CWY dimensions (M)	Strip dimensions (M)	OFZ	Remarks
7	8	9	10	11	12
0%	60x60	NIL	2340x300	NIL	NIL
0%	60x60	NIL	2340x300	NIL	NIL

VTUV AD 2.13 DECLARED DISTANCES

RWY Designator	TORA (M)	TODA (M)	ASDA (M)	LDA (M)	Remarks
1	2	3	4	5	6
18	2100	2100	2160	2100	NIL
36	2100	2100	2160	2100	NIL

VTUV AD 2.14 APPROACH AND RUNWAY LIGHTING

RWY Designator	APCH LGT type LEN INTST	THR LGT colour WBAR	VASIS (MEHT) PAPI	TDZ, LGT LEN	RWY Centre Line LGT Length, spacing, colour, INTST	RWY edge LGT LEN, spacing, colour INTST	RWY End LGT colour WBAR	SWY LGT LEN (M) colour	Remarks
1	2	3	4	5	6	7	8	9	10
18	RTIL	Green	PAPI LEFT 3° (50.58 FT)	NIL	NIL	2100 M 60 M White, LIH	Red	NIL	NIL
36	SALS 420 M	Green	PAPI LEFT 3° (50.58 FT)	NIL	NIL	2100 M 60 M White, LIH	Red	NIL	NIL

VTUV AD 2.15 OTHER LIGHTING, SECONDARY POWER SUPPLY

1	ABN/IBN location, characteristics and hours of operation	ABN: At tower building FLG W G EV 7 SEC
2	LDI location and LGT Anemometer location and LGT	NIL
3	TWY edge and centre line lighting	EDGE: All taxiways
4	Secondary power supply/switch-over time	Secondary power supply at tower and air field lighting (AFL). Switch-over time: 15 SEC
5	Remarks	NIL

VTUV AD 2.16 HELICOPTER LANDING AREA

1	Coordinates TLOF or THR of FATO Geoid undulation	NIL
2	TLOF and/or FATO elevation M/FT	NIL
3	TLOF and FATO area dimensions, surface, strength, marking	NIL
4	True and MAG BRG of FATO	NIL
5	Declared distance available	NIL
6	APP and FATO lighting	NIL
7	Remarks	NIL

## VTUV AD 2.17 ATS AIRSPACE

1	Designation and lateral limits	A circle of 5 NM radius centred on Roi Et DVOR/DME (160700.59N 1034619.45E)
2	Vertical limits	2000 FT/AGL
3	Airspace classification	C
4	ATS unit call sign Language(s)	Roi Et Tower English, Thai
5	Transition altitude	11000 FT
6	Remarks	NIL

## VTUV AD 2.18 ATS COMMUNICATION FACILITIES

Service designation	Call sign	Frequency	Hours of operation	Remarks
1	2	3	4	5
APP	Roi Et Approach	125.4 MHZ	2300-1100	<sup>1</sup> )Emergency frequency
TWR	Roi Et Tower	119.75 MHZ 236.6 MHZ 121.5 MHZ <sup>1</sup> )	2300-1100	
ATIS	Roi Et Airport	319 KHZ	2300-1100	

## VTUV AD 2.19 RADIO NAVIGATION AND LANDING AIDS

Type of aid, MAG VAR CAT of ILS/MLS (For VOR/ILS/MLS, give declination)	ID	Frequency	Hours of operation	Position of transmitting antenna coordinates	Elevation of DME transmitting antenna	Remarks
1	2	3	4	5	6	7
NDB	RE	319 KHZ	H24	160638.46N 1034641.60E		
DVOR/DME	ROT	111.2 MHZ CH 49X	H24	160700.59N 1034619.45E		
LOC RWY36 ILS CAT I	IROT	109.5 MHZ	H24	160744.28N 1034627.64E		LOC: Designated operation coverage 18 NM, ALT 6700 FT AMSL
GP		332.6 MHZ	H24	160635.76N 1034620.54E		GP: 3 GEG, RDH 50 FT
DME	IROT	CH 32X (109.5 MHZ)	H24	160744.36N 1034625.22E	448FT	DME: Paired with LOC FREQ.

## VTUV AD 2.20 LOCAL AERODROME REGULATIONS

All aircraft code letter C and higher are not allowed to turn on runway. The turn shall be made on the runway turn pad only. Any breach done by the aircraft operator shall be recorded and reported to The Civil Aviation Authority of Thailand / The Headquarter of that operator shall be liable for the compensation caused by such violation.

## VTUV AD 2.21 NOISE ABATEMENT PROCEDURES

NIL

## VTUV AD 2.22 FLIGHT PROCEDURES

NIL

VTUV AD 2.23 ADDITIONAL INFORMATION

- Birds concentration on and in the vicinity of an Aerodrome.

VTUV AD 2.24 CHARTS RELATED TO AN AERODROME

Chart name	Page
Aerodrome Chart - ICAO	AD 2-VTUV-2-1
Standard Departure Chart - Instrument (SID) - ICAO - RNAV RWY 18 - ANKID1A BODUR1A DOTUS1A ENTEK1A RURAR1A SEDNO1A	AD2-VTUV-6-1
Standard Departure Chart - Instrument (SID) - ICAO - RNAV RWY 18 - ANKID1A BODUR1A DOTUS1A ENTEK1A RURAR1A SEDNO1A (Tabular description)	AD2-VTUV-6-2
Standard Departure Chart - Instrument (SID) - ICAO - RNAV RWY 18 - ANKID1A BODUR1A DOTUS1A ENTEK1A RURAR1A SEDNO1A (Waypoint list table)	AD2-VTUV-6-3
Standard Departure Chart - Instrument (SID) - ICAO - RNAV RWY 36 - ANKID1B BODUR1B DOTUS1B ENTEK1B RURAR1B SEDNO1B	AD2-VTUV-6-5
Standard Departure Chart - Instrument (SID) - ICAO - RNAV RWY 36 - ANKID1B BODUR1B DOTUS1B ENTEK1B RURAR1B SEDNO1B (Tabular description)	AD2-VTUV-6-6
Standard Departure Chart - Instrument (SID) - ICAO - RNAV RWY 36 - ANKID1B BODUR1B DOTUS1B ENTEK1B RURAR1B SEDNO1B (Waypoint list table)	AD2-VTUV-6-7
Instrument Approach Chart - ICAO - VOR RWY 18	AD 2-VTUV-8-1
Instrument Approach Chart - ICAO - VOR RWY 18 (Fix and point list table)	AD 2-VTUV-8-2
Instrument Approach Chart - ICAO - VOR RWY 36	AD 2-VTUV-8-3
Instrument Approach Chart - ICAO - VOR RWY 36 (Fix and point list table)	AD 2-VTUV-8-4
Instrument Approach Chart - ICAO - ILS or LOC y RWY 36	AD 2-VTUV-8-5
Instrument Approach Chart - ICAO - ILS or LOC y RWY 36 (Fix and point list table)	AD 2-VTUV-8-6
Instrument Approach Chart - ICAO - ILS or LOC z RWY 36	AD 2-VTUV-8-7
Instrument Approach Chart - ICAO - ILS or LOC z RWY 36 (Tabular description)	AD 2-VTUV-8-8
Instrument Approach Chart - ICAO - ILS or LOC z RWY 36 (Fix and point list table)	AD 2-VTUV-8-9
Instrument Approach Chart - ICAO - ILS or LOC z RWY 36 (Waypoint list table)	AD 2-VTUV-8-10
Instrument Approach Chart - ICAO - RNAV (GNSS) RWY 18	AD 2-VTUV-8-11
Instrument Approach Chart - ICAO - RNAV (GNSS) RWY 18 (Tabular description 1)	AD 2-VTUV-8-12
Instrument Approach Chart - ICAO - RNAV (GNSS) RWY 18 (Tabular description 2)	AD 2-VTUV-8-13
Instrument Approach Chart - ICAO - RNAV (GNSS) RWY 36	AD 2-VTUV-8-15
Instrument Approach Chart - ICAO - RNAV (GNSS) RWY 36 (Tabular description)	AD 2-VTUV-8-16
Instrument Approach Chart - ICAO - RNAV (GNSS) RWY 36 (Waypoint list table)	AD 2-VTUV-8-17

**AERODROME CHART - ICAO**

16 07 00 N  
103 46 26 E

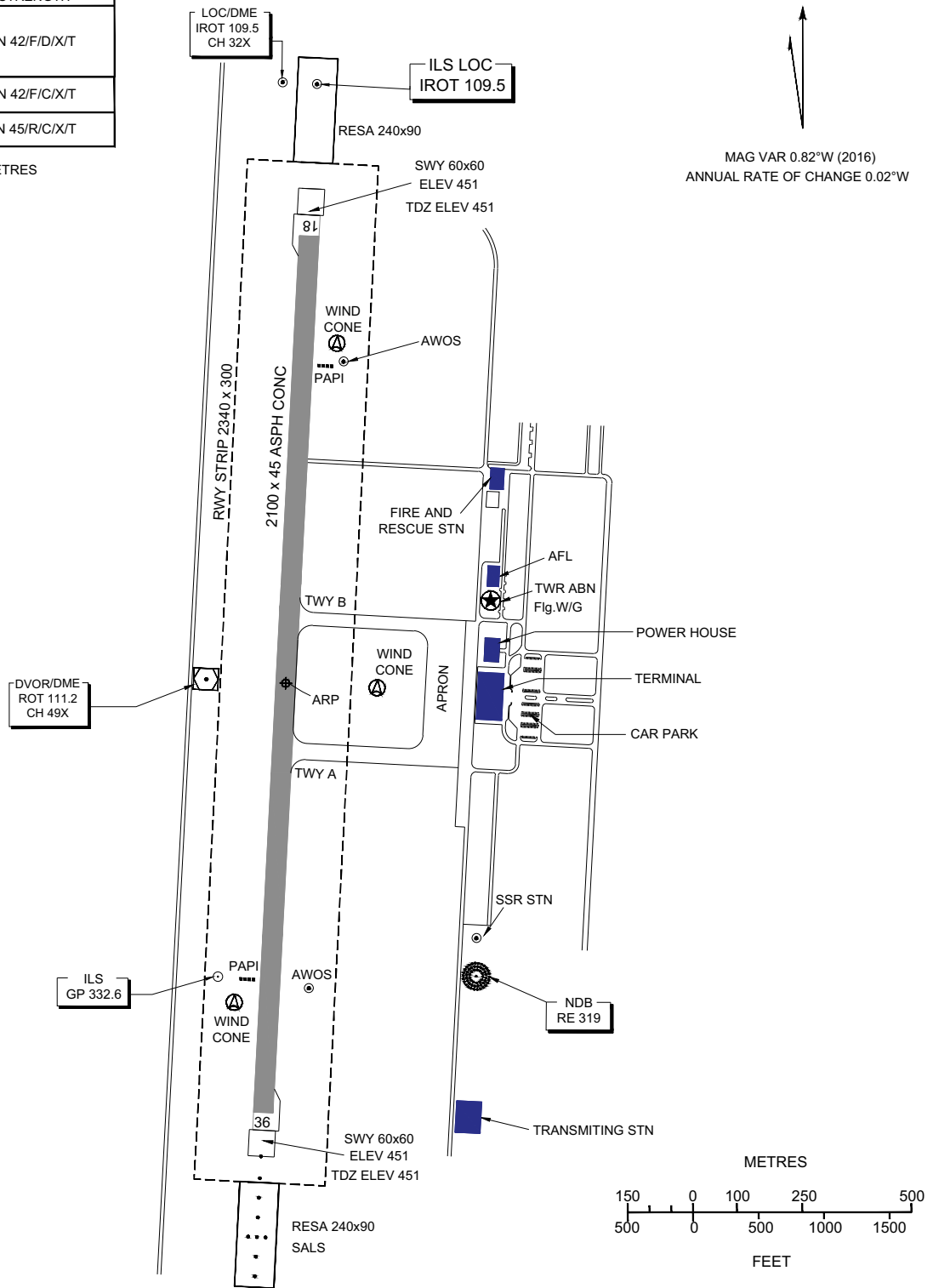
**ELEV 451 FT**

**TWR 119.75  
236.60**

**ROI ET / Roi Et**

RWY	DIRECTION (TRUE BRG)	THR	BEARING STRENGTH
18	182.69	16 07 34.53 N 103 46 27.20 E	PCN 42/F/D/X/T
36	02.69	16 06 26.14 N 103 46 24.15 E	
TAXIWAY A,B			PCN 42/F/C/X/T
APRON			PCN 45/R/C/X/T

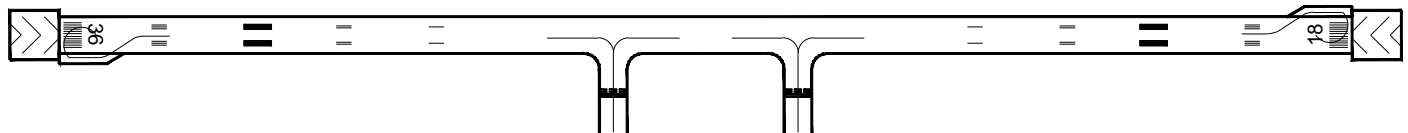
ELEVATIONS IN FEET AND DIMENSIONS IN METRES  
BEARING ARE MAGNETIC



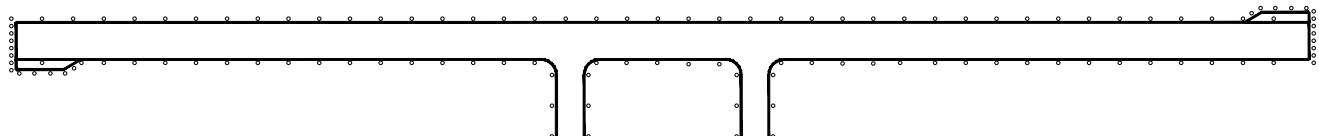
MAG VAR 0.82°W (2016)  
ANNUAL RATE OF CHANGE 0.02°W

CHANGE : REVISED CHART. MAG VAR. ANNUAL RATE OF CHANGE. AWOS. PAPI. WIND CONE. TABULAR INFO.

MARKING AIDS RWY 18/36 AND EXIT TWY



LIGHTING AIDS RWY 18/36 AND EXIT TWY



**INTENTIONALLY BLANK**



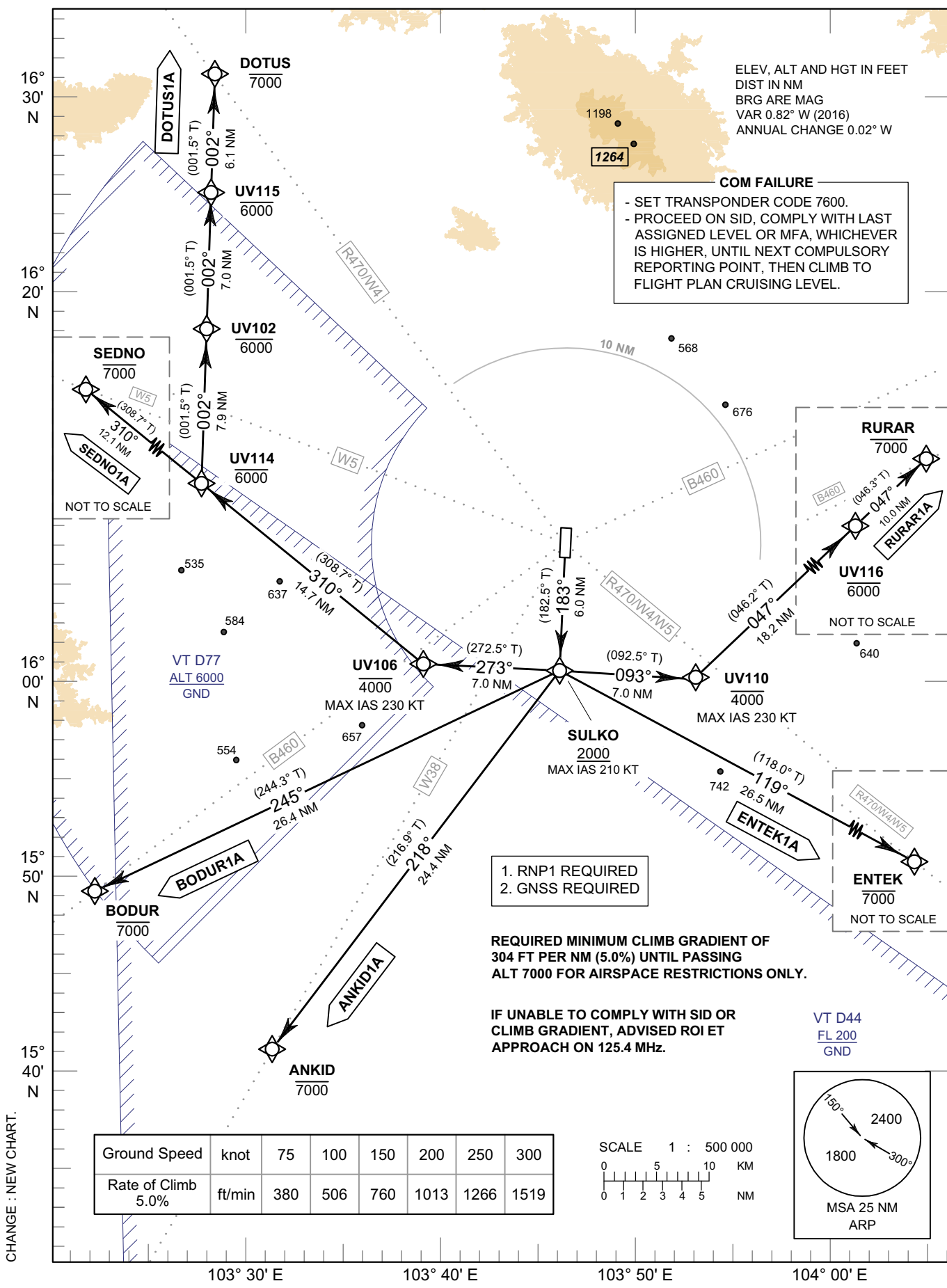
STANDARD DEPARTURE CHART -  
INSTRUMENT (SID) - ICAO

TRANSITION ALTITUDE  
11000 FT

APP : 125.4 MHz  
TWR : 119.75 , 236.6 MHz  
ATIS : 319 kHz

ROI ET / Roi Et (VTUV)  
RNAV RWY18

ANKID1A BODUR1A DOTUS1A  
ENTEK1A RURAR1A SEDNO1A



**STANDARD DEPARTURE CHART -  
INSTRUMENT (SID) - ICAO**

**ROI ET / Roi Et (VTUV)  
RNAV RWY18**

ANKID1A BODUR1A DOTUS1A  
ENTEK1A RURAR1A SEDNO1A

**TABULAR DESCRIPTION**

RNAV RWY18											
Serial Number	Path Descriptor	Waypoint Identifier	Flyover	Course ° M (° T)	Magnetic Variation	Distance (NM)	Turn Direction	Altitude (FT)	Speed (KT)	VPA/TCH	Navigation Specification
ANKID1A											
010	-	DER RWY18	-	-	+0.90	-	-	-	-	-	RNP 1
020	CF	SULKO	-	183°(182.5°)	+0.90	6.0	R	+2000	-210	-	RNP 1
030	TF	ANKID	-	218°(216.9°)	+0.90	24.4	-	-7000	-	-	RNP 1
BODUR1A											
010	-	DER RWY18	-	-	+0.90	-	-	-	-	-	RNP 1
020	CF	SULKO	-	183°(182.5°)	+0.90	6.0	R	+2000	-210	-	RNP 1
030	TF	BODUR	-	245°(244.3°)	+0.90	26.4	-	-7000	-	-	RNP 1
DOTUS1A											
010	-	DER RWY18	-	-	+0.90	-	-	-	-	-	RNP 1
020	CF	SULKO	-	183°(182.5°)	+0.90	6.0	R	+2000	-210	-	RNP 1
030	TF	UV106	-	273°(272.5°)	+0.90	7.0	R	-4000	-230	-	RNP 1
040	TF	UV114	-	310°(308.7°)	+0.90	14.7	R	-6000	-	-	RNP 1
050	TF	UV102	-	002°(001.5°)	+0.90	7.9	-	-6000	-	-	RNP 1
060	TF	UV115	-	002°(001.5°)	+0.90	7.0	-	-6000	-	-	RNP 1
070	TF	DOTUS	-	002°(001.5°)	+0.90	6.1	-	-7000	-	-	RNP 1
ENTEK1A											
010	-	DER RWY18	-	-	+0.90	-	-	-	-	-	RNP 1
020	CF	SULKO	-	183°(182.5°)	+0.90	6.0	L	+2000	-210	-	RNP 1
030	TF	ENTEK	-	119°(118.0°)	+0.90	26.5	-	-7000	-	-	RNP 1
RURAR1A											
010	-	DER RWY18	-	-	+0.90	-	-	-	-	-	RNP 1
020	CF	SULKO	-	183°(182.5°)	+0.90	6.0	L	+2000	-210	-	RNP 1
030	TF	UV110	-	093°(092.5°)	+0.90	7.0	L	-4000	-230	-	RNP 1
040	TF	UV116	-	047°(046.2°)	+0.90	18.2	-	-6000	-	-	RNP 1
050	TF	RURAR	-	047°(046.3°)	+0.90	10.0	-	-7000	-	-	RNP 1
SEDNO1A											
010	-	DER RWY18	-	-	+0.90	-	-	-	-	-	RNP 1
020	CF	SULKO	-	183°(182.5°)	+0.90	6.0	R	+2000	-210	-	RNP 1
030	TF	UV106	-	273°(272.5°)	+0.90	7.0	R	-4000	-230	-	RNP 1
040	TF	UV114	-	310°(308.7°)	+0.90	14.7	-	-6000	-	-	RNP 1
050	TF	SEDNO	-	310°(308.7°)	+0.90	12.1	-	-7000	-	-	RNP 1

STANDARD DEPARTURE CHART -  
INSTRUMENT (SID) - ICAO

ROI ET / Roi Et (VTUV)  
RNAV RWY18

ANKID1A BODUR1A DOTUS1A  
ENTEK1A RURAR1A SEDNO1A

**WAYPOINT LIST**

RNAV RWY18	
Waypoint Identifier	Coordinates
DER RWY18	16° 06' 26.14" N 103° 46' 24.15" E
ANKID	15° 40' 48.67" N 103° 30' 57.40" E
BODUR	15° 48' 52.90" N 103° 21' 27.21" E
DOTUS	16° 31' 03.01" N 103° 27' 31.56" E
ENTEK	15° 47' 54.67" N 104° 10' 24.31" E
RURAR	16° 19' 43.04" N 104° 14' 35.65" E
SEDNO	16° 17' 33.31" N 103° 17' 07.18" E
SULKO	16° 00' 24.98" N 103° 46' 08.03" E
UV102	16° 17' 54.63" N 103° 27' 10.81" E
UV106	16° 00' 42.97" N 103° 38' 52.38" E
UV110	16° 00' 06.74" N 103° 53' 23.67" E
UV114	16° 09' 56.42" N 103° 26' 58.24" E
UV115	16° 24' 56.23" N 103° 27' 21.90" E
UV116	16° 12' 46.75" N 104° 07' 04.75" E

**INTENTIONALLY BLANK**

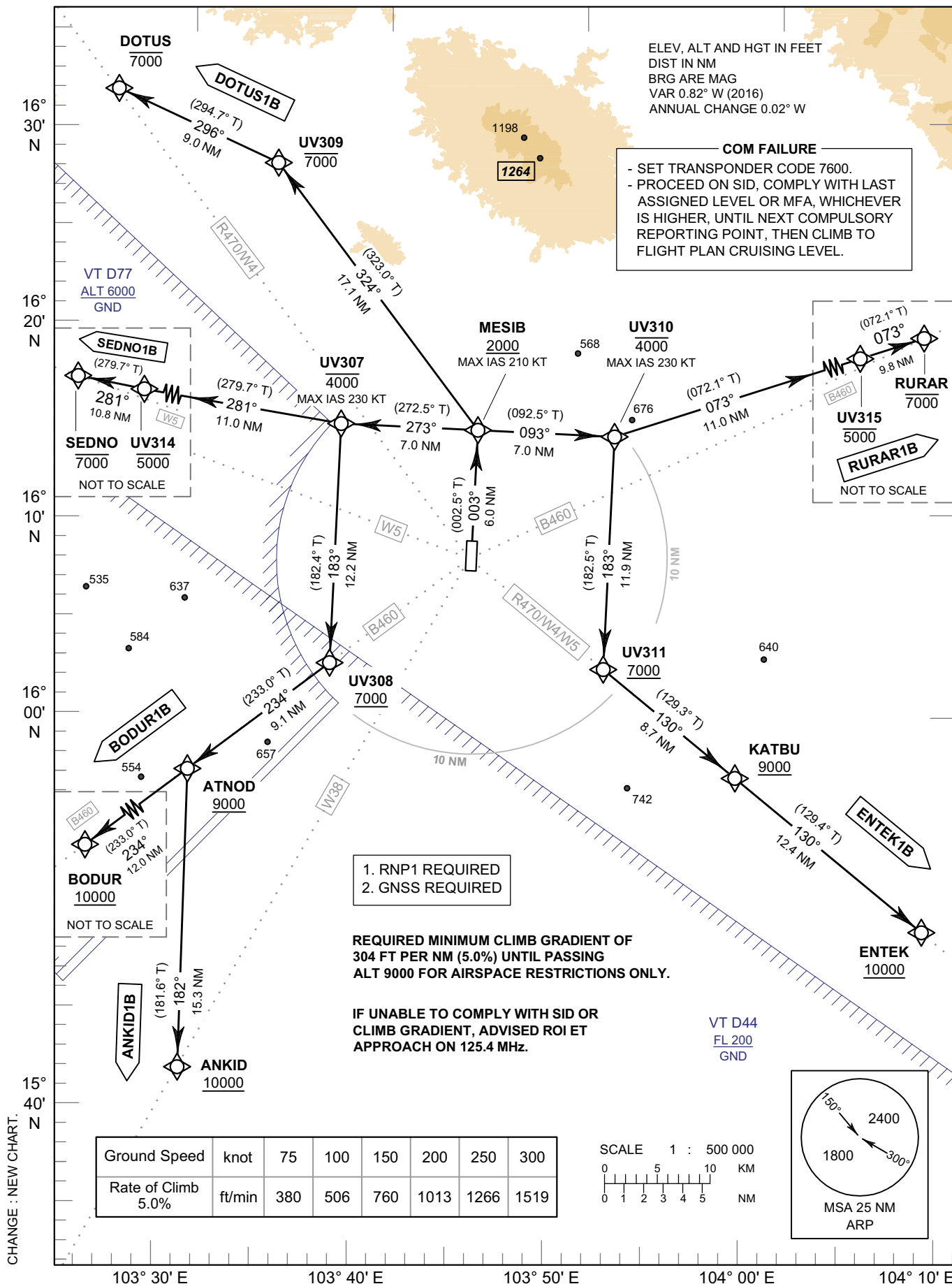
**STANDARD DEPARTURE CHART -  
INSTRUMENT (SID) - ICAO**

TRANSITION ALTITUDE  
11000 FT

APP : 125.4 MHz  
TWR : 119.75 , 236.6 MHz  
ATIS : 319 kHz

**ROI ET / Roi Et (VTUV)  
RNAV RWY36**

ANKID1B BODUR1B DOTUS1B  
ENTEK1B RURAR1B SEDNO1B



**STANDARD DEPARTURE CHART -  
INSTRUMENT (SID) - ICAO**

**ROI ET / Roi Et (VTUV)  
RNAV RWY36**

ANKID1B BODUR1B DOTUS1B  
ENTEK1B RURAR1B SEDNO1B

**TABULAR DESCRIPTION**

RNAV RWY36											
Serial Number	Path Descriptor	Waypoint Identifier	Flyover	Course ° M (° T)	Magnetic Variation	Distance (NM)	Turn Direction	Altitude (FT)	Speed (KT)	VPA/TCH	Navigation Specification
ANKID1B											
010	-	DER RWY36	-	-	+0.90	-	-	-	-	-	RNP 1
020	CF	MESIB	-	003°(002.5°)	+0.90	6.0	L	+2000	-210	-	RNP 1
030	TF	UV307	-	273°(272.5°)	+0.90	7.0	L	-4000	-230	-	RNP 1
040	TF	UV308	-	183°(182.4°)	+0.90	12.2	R	+7000	-	-	RNP 1
050	TF	ATNOD	-	234°(233.0°)	+0.90	9.1	L	+9000	-	-	RNP 1
060	TF	ANKID	-	182°(181.6°)	+0.90	15.3	-	+10000	-	-	RNP 1
BODUR1B											
010	-	DER RWY36	-	-	+0.90	-	-	-	-	-	RNP 1
020	CF	MESIB	-	003°(002.5°)	+0.90	6.0	L	+2000	-210	-	RNP 1
030	TF	UV307	-	273°(272.5°)	+0.90	7.0	L	-4000	-230	-	RNP 1
040	TF	UV308	-	183°(182.4°)	+0.90	12.2	R	+7000	-	-	RNP 1
050	TF	ATNOD	-	234°(233.0°)	+0.90	9.1	-	+9000	-	-	RNP 1
060	TF	BODUR	-	234°(233.0°)	+0.90	12.0	-	+10000	-	-	RNP 1
DOTUS1B											
010	-	DER RWY36	-	-	+0.90	-	-	-	-	-	RNP 1
020	CF	MESIB	-	003°(002.5°)	+0.90	6.0	L	+2000	-210	-	RNP 1
030	TF	UV309	-	324°(323.0°)	+0.90	17.1	L	-7000	-	-	RNP 1
040	TF	DOTUS	-	296°(294.7°)	+0.90	9.0	-	-7000	-	-	RNP 1
ENTEK1B											
010	-	DER RWY36	-	-	+0.90	-	-	-	-	-	RNP 1
020	CF	MESIB	-	003°(002.5°)	+0.90	6.0	R	+2000	-210	-	RNP 1
030	TF	UV310	-	093°(092.5°)	+0.90	7.0	R	-4000	-230	-	RNP 1
040	TF	UV311	-	183°(182.5°)	+0.90	11.9	L	+7000	-	-	RNP 1
050	TF	KATBU	-	130°(129.3°)	+0.90	8.7	-	+9000	-	-	RNP 1
060	TF	ENTEK	-	130°(129.4°)	+0.90	12.4	-	+10000	-	-	RNP 1
RURAR1B											
010	-	DER RWY36	-	-	+0.90	-	-	-	-	-	RNP 1
020	CF	MESIB	-	003°(002.5°)	+0.90	6.0	R	+2000	-210	-	RNP 1
030	TF	UV310	-	093°(092.5°)	+0.90	7.0	L	-4000	-230	-	RNP 1
040	TF	UV315	-	073°(072.1°)	+0.90	11.0	-	-5000	-	-	RNP 1
050	TF	RURAR	-	073°(072.1°)	+0.90	9.8	-	-7000	-	-	RNP 1
SEDNO1B											
010	-	DER RWY36	-	-	+0.90	-	-	-	-	-	RNP 1
020	CF	MESIB	-	003°(002.5°)	+0.90	6.0	L	+2000	-210	-	RNP 1
030	TF	UV307	-	273°(272.5°)	+0.90	7.0	R	-4000	-230	-	RNP 1
040	TF	UV314	-	281°(279.7°)	+0.90	11.0	-	-5000	-	-	RNP 1
050	TF	SEDNO	-	281°(279.7°)	+0.90	10.8	-	-7000	-	-	RNP 1

STANDARD DEPARTURE CHART -  
INSTRUMENT (SID) - ICAO

ROI ET / Roi Et (VTUV)  
RNAV RWY36

ANKID1B BODUR1B DOTUS1B  
ENTEK1B RURAR1B SEDNO1B

WAYPOINT LIST

RNAV RWY36	
Waypoint Identifier	Coordinates
DER RWY36	16° 07' 34.53" N 103° 46' 27.20" E
ANKID	15° 40' 48.67" N 103° 30' 57.40" E
ATNOD	15° 56' 08.67" N 103° 31' 24.04" E
BODUR	15° 48' 52.90" N 103° 21' 27.21" E
DOTUS	16° 31' 03.01" N 103° 27' 31.56" E
ENTEK	15° 47' 54.67" N 104° 10' 24.31" E
KATBU	15° 55' 48.14" N 104° 00' 28.29" E
MESIB	16° 13' 35.69" N 103° 46' 43.33" E
RURAR	16° 19' 43.04" N 104° 14' 35.65" E
SEDNO	16° 17' 33.31" N 103° 17' 07.18" E
UV307	16° 13' 53.68" N 103° 39' 27.19" E
UV308	16° 01' 37.11" N 103° 38' 54.77" E
UV309	16° 27' 16.30" N 103° 36' 02.07" E
UV310	16° 13' 17.44" N 103° 53' 59.44" E
UV311	16° 01' 22.10" N 103° 53' 27.08" E
UV314	16° 15' 44.87" N 103° 28' 10.71" E
UV315	16° 16' 41.36" N 104° 04' 52.21" E

**INTENTIONALLY BLANK**

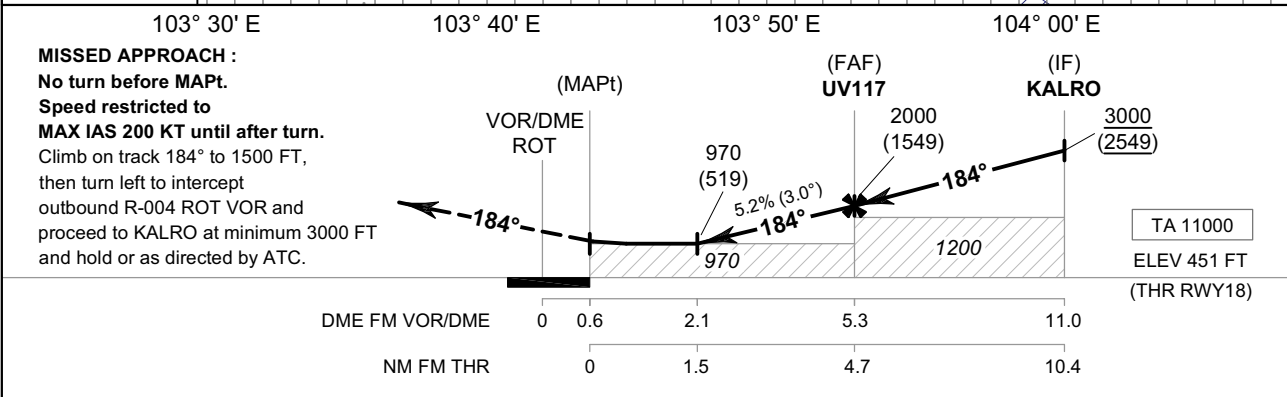
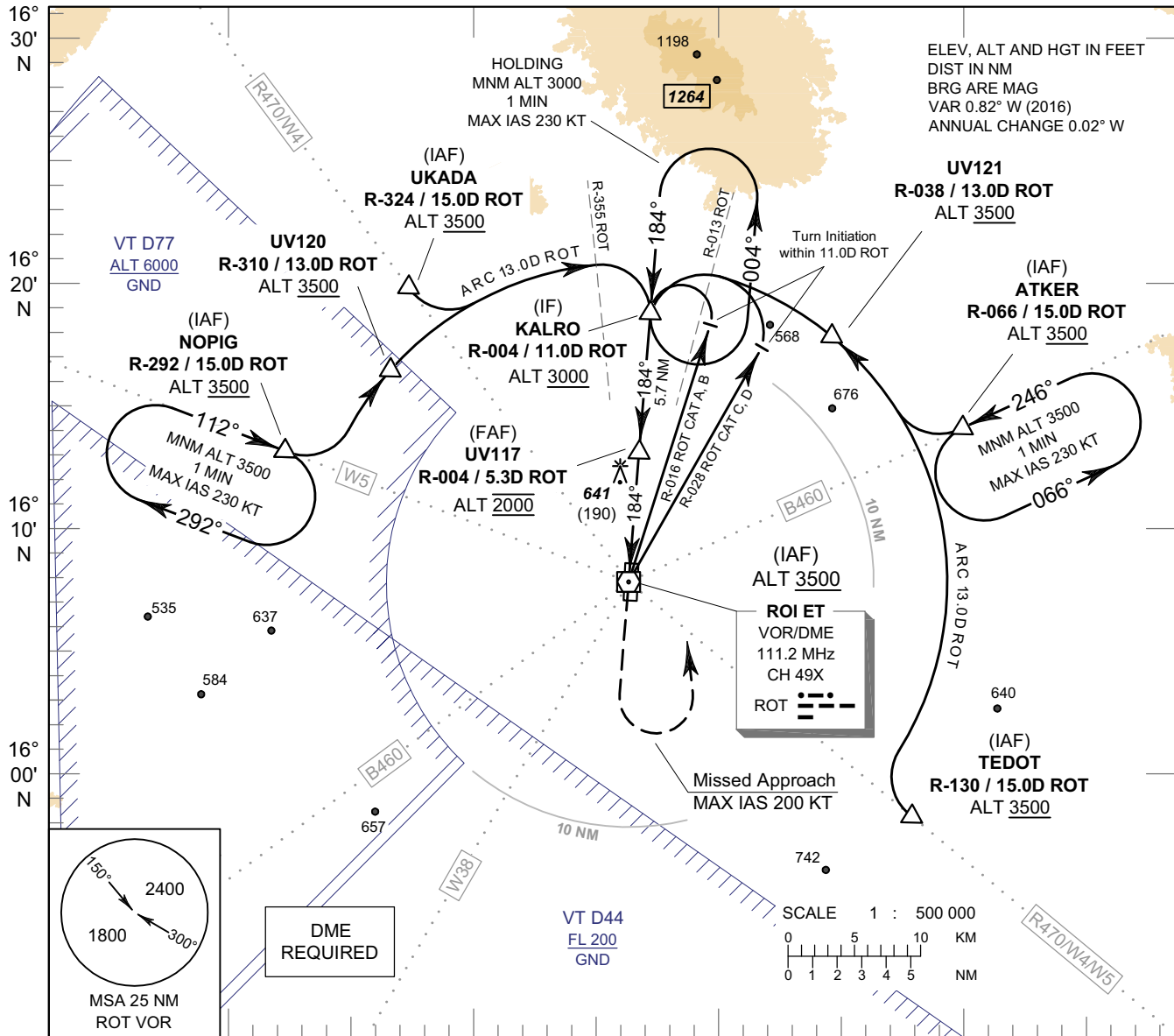


**INSTRUMENT  
APPROACH  
CHART - ICAO**

**AERODROME ELEV 451 FT  
HEIGHTS RELATED TO  
AERODROME ELEV**

APP : 125.4 MHz  
TWR : 119.75 , 236.6 MHz  
ATIS : 319 kHz

**ROI ET / Roi Et (VTUV)**  
**VOR RWY18**



CHANGE : NEW CHART.

OCA/H	A	B	C	D	Distance (ROT)	2.1D	3D	4D	5D	FAF		
Straight - in Approach	970 (519)				Altitude (Height)	970 (519)	1260 (809)	1575 (1124)	1890 (1439)	2000 (1549)		
					Ground Speed	knot	70	90	100	120	140	160
Circling (OCH AAL)	1200 (749)				Rate of Descent 5.2%	ft/min	369	474	527	632	737	843

**INSTRUMENT  
APPROACH  
CHART - ICAO**

**AERODROME ELEV 451 FT  
HEIGHTS RELATED TO  
AERODROME ELEV**

**ROI ET / Roi Et (VTUV)**

**VOR RWY18**

FIX/POINT		COORDINATES	
(IAF) VOR	ROT	16° 07' 00.59" N	103° 46' 19.45" E
(IAF) UKADA	R-324 / 15.0D ROT	16° 19' 02.02" N	103° 36' 56.08" E
UV120	R-310 / 13.0D ROT	16° 15' 14.73" N	103° 35' 50.59" E
(IAF) NOPIG	R-292 / 15.0D ROT	16° 12' 17.45" N	103° 31' 43.71" E
(IAF) TEDOT	R-130 / 15.0D ROT	15° 57' 27.97" N	103° 58' 22.45" E
(IAF) ATKER	R-066 / 15.0D ROT	16° 13' 22.29" N	104° 00' 27.10" E
UV121	R-038 / 13.0D ROT	16° 17' 24.80" N	103° 54' 29.08" E
(IF) KALRO	R-004 / 11.0D ROT	16° 18' 02.16" N	103° 47' 00.15" E
(FAF) UV117	R-004 / 5.3D ROT	16° 12' 17.48" N	103° 46' 38.93" E
(MAPt)	R-004 / 0.6D ROT	16° 07' 34.81" N	103° 46' 21.55" E

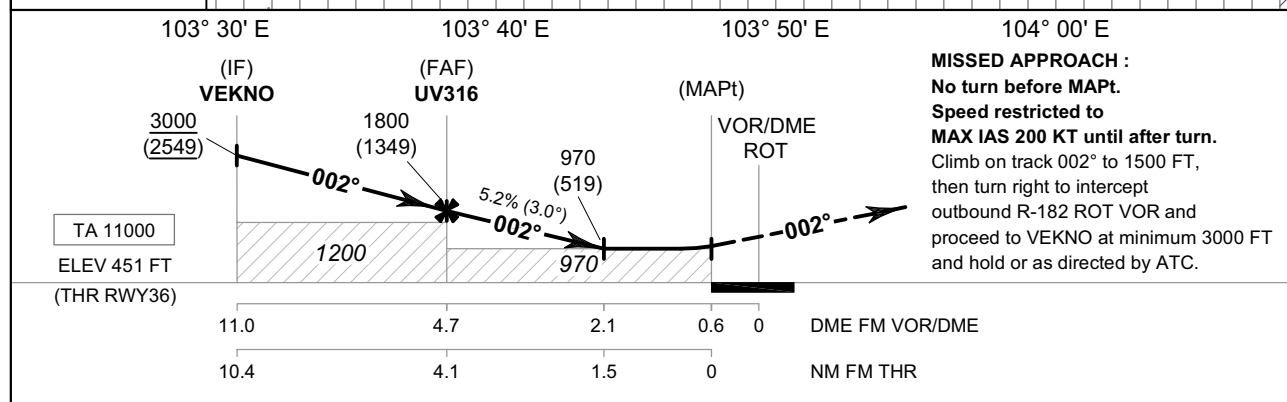
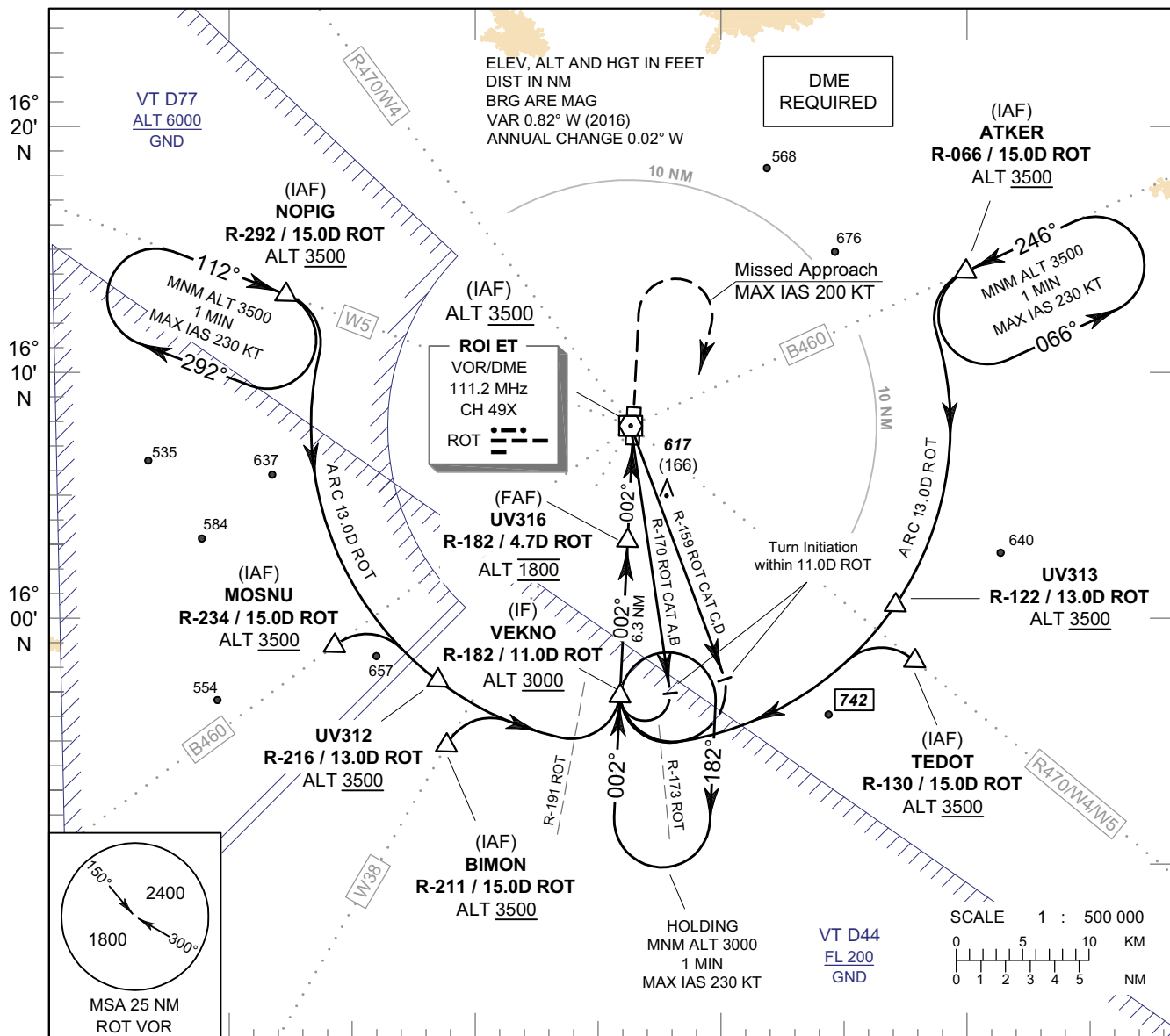
**INSTRUMENT  
APPROACH  
CHART - ICAO**

**AERODROME ELEV 451 FT  
HEIGHTS RELATED TO  
AERODROME ELEV**

APP : 125.4 MHz  
TWR : 119.75 , 236.6 MHz  
ATIS : 319 kHz

**ROI ET / Roi Et (VTUV)**

**VOR RWY36**



OCA/H	A	B	C	D	Distance (ROT)	FAF	4D	3D	2.1D				
Straight - in Approach	970 (519)				Altitude (Height)	1800 (1349)	1575 (1124)	1260 (809)	970 (519)				
					Ground Speed	knot	70	90	100	120	140	160	
Circling (OCH AAL)	1200 (749)				Rate of Descent	5.2%	ft/min	369	474	527	632	737	843

CHANGE : NEW CHART.

**INSTRUMENT  
APPROACH  
CHART - ICAO**

**AERODROME ELEV 451 FT  
HEIGHTS RELATED TO  
AERODROME ELEV**

**ROI ET / Roi Et (VTUV)**

**VOR RWY36**

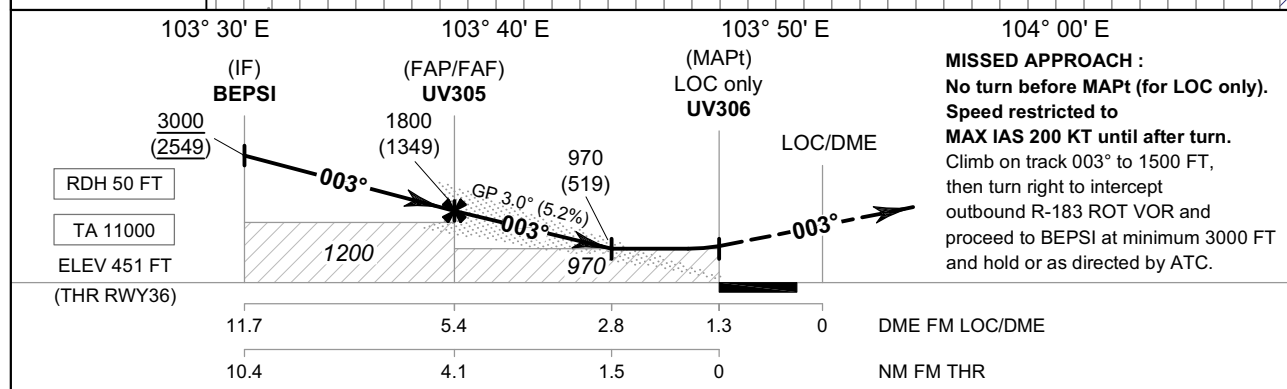
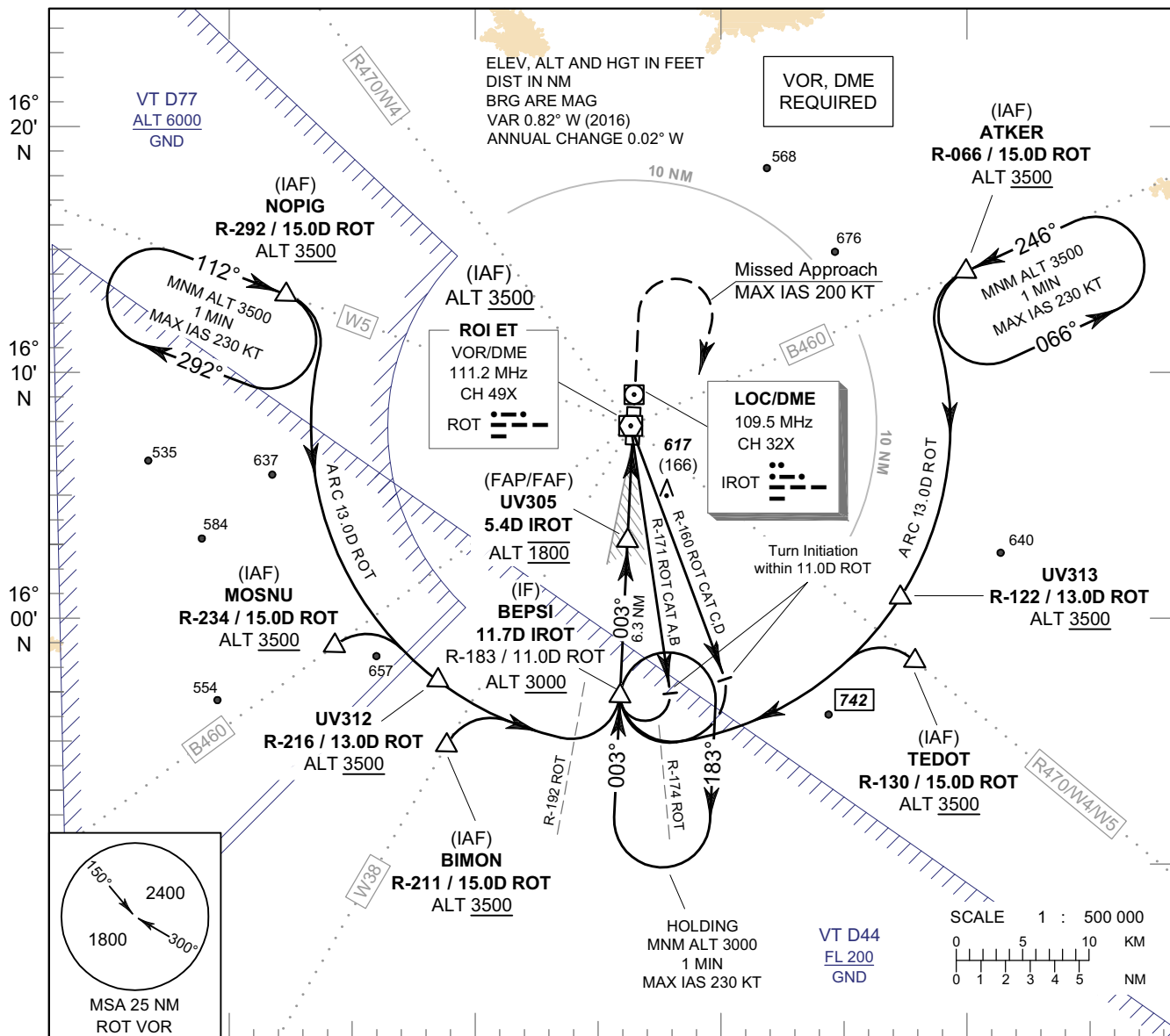
FIX/POINT		COORDINATES	
(IAF) VOR	ROT	16° 07' 00.59" N	103° 46' 19.45" E
(IAF) NOPIG	R-292 / 15.0D ROT	16° 12' 17.45" N	103° 31' 43.71" E
(IAF) MOSNU	R-234 / 15.0D ROT	15° 57' 57.11" N	103° 33' 52.77" E
UV312	R-216 / 13.0D ROT	15° 56' 19.95" N	103° 38' 33.51" E
(IAF) BIMON	R-211 / 15.0D ROT	15° 53' 54.78" N	103° 38' 37.93" E
(IAF) ATKER	R-066 / 15.0D ROT	16° 13' 22.29" N	104° 00' 27.10" E
UV313	R-122 / 13.0D ROT	16° 00' 15.24" N	103° 57' 52.55" E
(IAF) TEDOT	R-130 / 15.0D ROT	15° 57' 27.97" N	103° 58' 22.45" E
(IF) VEKNO	R-182 / 11.0D ROT	15° 55' 57.94" N	103° 46' 07.50" E
(FAF) UV316	R-182 / 4.7D ROT	16° 02' 19.31" N	103° 46' 14.37" E
(MAPt)	R-182 / 0.6D ROT	16° 06' 26.30" N	103° 46' 18.83" E

**INSTRUMENT  
APPROACH  
CHART - ICAO**

**AERODROME ELEV 451 FT  
HEIGHTS RELATED TO  
THR RWY36 - ELEV 451 FT**

APP : 125.4 MHz  
TWR : 119.75 , 236.6 MHz  
ATIS : 319 kHz

**ROI ET / Roi Et (VTUV)**  
**ILS or LOC y RWY36**



OCA/H		A	B	C	D	GS OUT	Distance (IROT)	FAF	5D	4D	3D	2.8D			
Straight-in Approach	CAT I	660 (209)						Altitude (Height)	1800 (1349)	1670 (1219)	1355 (904)	1040 (589)	970 (519)		
	LOC only	970 (519)					Ground Speed	knot	70	90	100	120	140	160	
Circling (OCH AAL)		1200 (749)					Rate of Descent	5.2%	ft/min	369	474	527	632	737	843

CHANGE : NEW CHART.

**INSTRUMENT  
APPROACH  
CHART - ICAO**

**AERODROME ELEV 451 FT  
HEIGHTS RELATED TO  
THR RWY36 - ELEV 451 FT**

**ROI ET / Roi Et (VTUV)**

**ILS or LOC y RWY36**

FIX/POINT		COORDINATES	
(IAF) VOR	ROT	16° 07' 00.59" N	103° 46' 19.45" E
(IAF) NOPIG	R-292 / 15.0D ROT	16° 12' 17.45" N	103° 31' 43.71" E
(IAF) MOSNU	R-234 / 15.0D ROT	15° 57' 57.11" N	103° 33' 52.77" E
UV312	R-216 / 13.0D ROT	15° 56' 19.95" N	103° 38' 33.51" E
(IAF) BIMON	R-211 / 15.0D ROT	15° 53' 54.78" N	103° 38' 37.93" E
(IAF) ATKER	R-066 / 15.0D ROT	16° 13' 22.29" N	104° 00' 27.10" E
UV313	R-122 / 13.0D ROT	16° 00' 15.24" N	103° 57' 52.55" E
(IAF) TEDOT	R-130 / 15.0D ROT	15° 57' 27.97" N	103° 58' 22.45" E
(IF) BEPSI	11.7D IROT	15° 55' 58.22" N	103° 45' 56.13" E
(FAP/FAF) UV305	5.4D IROT	16° 02' 19.35" N	103° 46' 13.13" E
MAPt (LOC only) THR RWY36	1.3D IROT	16° 06' 26.14" N	103° 46' 24.15" E
GP		16° 06' 35.76" N	103° 46' 20.54" E
LOC/DME	IROT	16° 07' 44.28" N	103° 46' 27.64" E

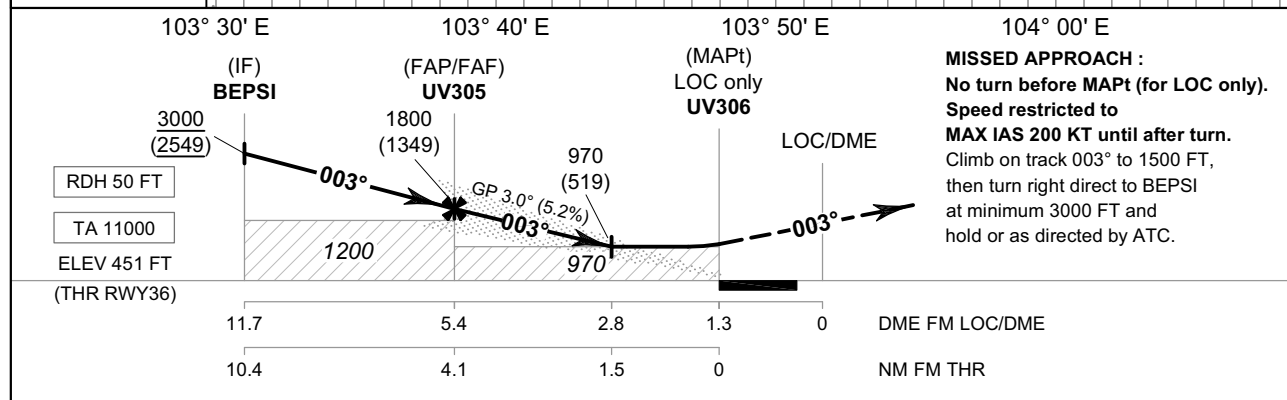
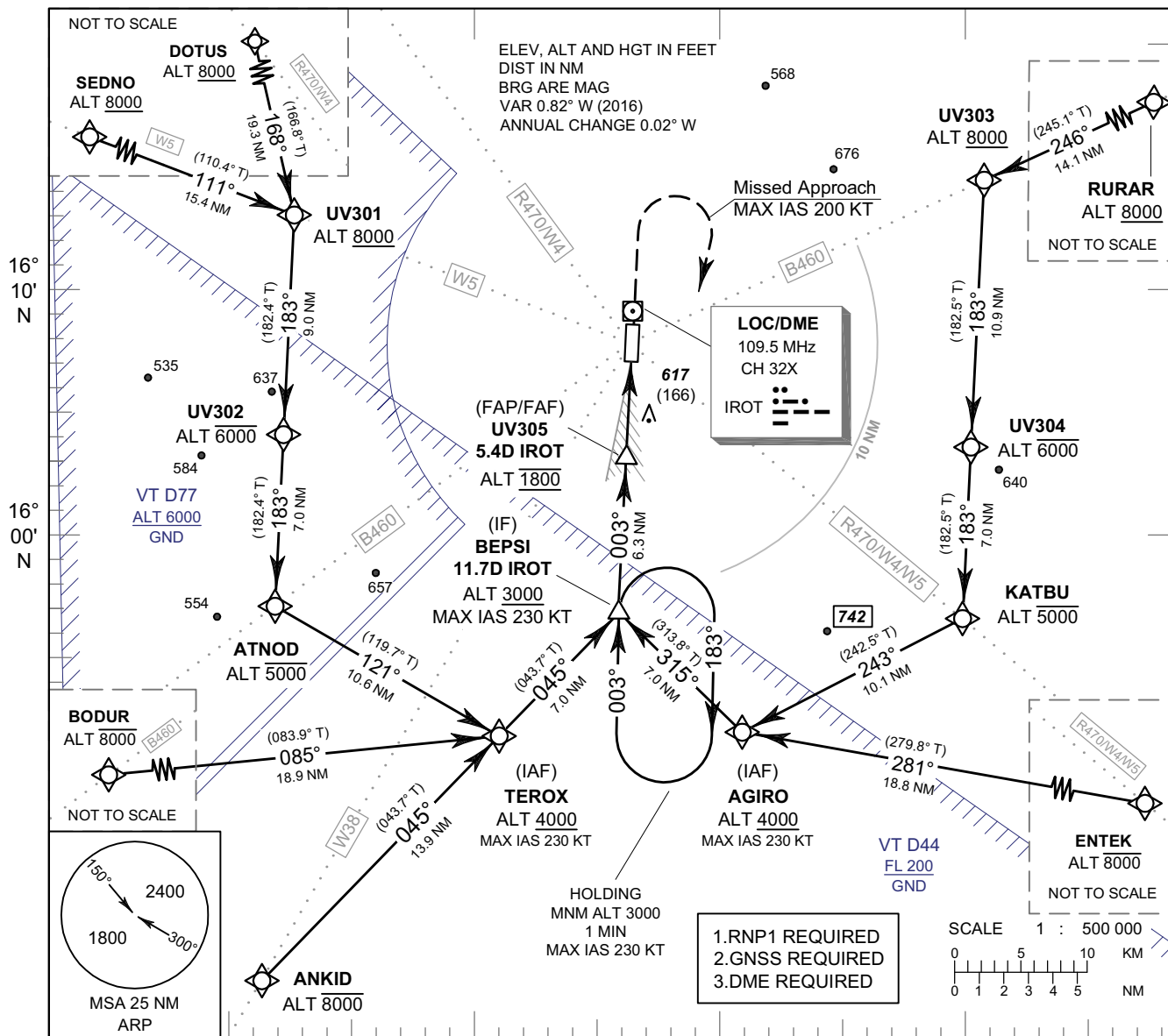
**INSTRUMENT  
APPROACH  
CHART - ICAO**

**AERODROME ELEV 451 FT  
HEIGHTS RELATED TO  
THR RWY36 - ELEV 451 FT**

APP : 125.4 MHz  
TWR : 119.75 , 236.6 MHz  
ATIS : 319 kHz

**ROI ET / Roi Et (VTUV)**

**ILS or LOC z RWY36**



OCA/H	A	B	C	D	GS OUT	Distance (IROT)	FAF	5D	4D	3D	2.8D				
						Straight-in Approach	CAT I	660 (209)	1800 (1349)	1670 (1219)	1355 (904)	1040 (589)	970 (519)	Ground Speed	knot
LOC only		970 (519)	Rate of Descent	ft/min	369	474	527	632	737	843					
Circling (OCH AAL)		1200 (749)													

CHANGE : NEW CHART.

**INSTRUMENT  
APPROACH  
CHART - ICAO**

**AERODROME ELEV 451 FT  
HEIGHTS RELATED TO  
THR RWY36 - ELEV 451 FT**

**ROI ET / Roi Et (VTUV)**

**ILS or LOC z RWY36**

**TABULAR DESCRIPTION**

ILS or LOC z RWY36											
Serial Number	Path Descriptor	Waypoint Identifier	Flyover	Course ° M (° T)	Magnetic Variation	Distance (NM)	Turn Direction	Altitude (FT)	Speed (KT)	VPA/RDH	Navigation Specification
010	IF	ANKID	-	-	+0.90	-	-	-8000	-	-	RNP 1
020	TF	(IAF) TEROX	-	045°(043.7°)	+0.90	13.9	-	+4000	-230	-	RNP 1
030	TF	(IF) BEPSI	-	045°(043.7°)	+0.90	7.0	-	+3000	-230	-	RNP 1
010	IF	BODUR	-	-	+0.90	-	-	-8000	-	-	RNP 1
020	TF	(IAF) TEROX	-	085°(083.9°)	+0.90	18.9	L	+4000	-230	-	RNP 1
030	TF	(IF) BEPSI	-	045°(043.7°)	+0.90	7.0	-	+3000	-230	-	RNP 1
010	IF	SEDNO	-	-	+0.90	-	-	+8000	-	-	RNP 1
020	TF	UV301	-	111°(110.4°)	+0.90	15.4	R	+8000	-	-	RNP 1
030	TF	UV302	-	183°(182.4°)	+0.90	9.0	-	-6000	-	-	RNP 1
040	TF	ATNOD	-	183°(182.4°)	+0.90	7.0	L	-5000	-	-	RNP 1
050	TF	(IAF) TEROX	-	121°(119.7°)	+0.90	10.6	L	+4000	-230	-	RNP 1
060	TF	(IF) BEPSI	-	045°(043.7°)	+0.90	7.0	-	+3000	-230	-	RNP 1
010	IF	DOTUS	-	-	+0.90	-	-	+8000	-	-	RNP 1
020	TF	UV301	-	168°(166.8°)	+0.90	19.3	R	+8000	-	-	RNP 1
030	TF	UV302	-	183°(182.4°)	+0.90	9.0	-	-6000	-	-	RNP 1
040	TF	ATNOD	-	183°(182.4°)	+0.90	7.0	L	-5000	-	-	RNP 1
050	TF	(IAF) TEROX	-	121°(119.7°)	+0.90	10.6	L	+4000	-230	-	RNP 1
060	TF	(IF) BEPSI	-	045°(043.7°)	+0.90	7.0	-	+3000	-230	-	RNP 1
010	IF	ENTEK	-	-	+0.90	-	-	-8000	-	-	RNP 1
020	TF	(IAF) AGIRO	-	281°(279.8°)	+0.90	18.8	R	+4000	-230	-	RNP 1
030	TF	(IF) BEPSI	-	315°(313.8°)	+0.90	7.0	-	+3000	-230	-	RNP 1
010	IF	RURAR	-	-	+0.90	-	-	+8000	-	-	RNP 1
020	TF	UV303	-	246°(245.1°)	+0.90	14.1	L	+8000	-	-	RNP 1
030	TF	UV304	-	183°(182.5°)	+0.90	10.9	-	-6000	-	-	RNP 1
040	TF	KATBU	-	183°(182.5°)	+0.90	7.0	R	-5000	-	-	RNP 1
050	TF	(IAF) AGIRO	-	243°(242.5°)	+0.90	10.1	R	+4000	-230	-	RNP 1
060	TF	(IF) BEPSI	-	315°(313.8°)	+0.90	7.0	-	+3000	-230	-	RNP 1
010	IF	(IF) BEPSI	-	-	+0.90	-	-	+3000	-230	-	RNP 1
TRANSITION TO ILS or LOC											
020	TF	(FAP/FAF) UV305	-	003°(002.5°)	+0.90	6.3	-	@1800	-	-	ILS
030	TF	(MAPt@THR36) UV306	Y	003°(002.5°)	+0.90	4.1	-	@501	-	-3.0/50	ILS
040	CA	-	-	003°(002.5°)	+0.90	-	-	+1500	-200	-	RNP 1
050	DF	(IF) BEPSI	-	-	+0.90	-	R	+3000	-200	-	RNP 1
060	HM	(IF) BEPSI	Y	003°(002.5°)	+0.90	1 minute	R	+3000	-230	-	RNP 1



**INSTRUMENT  
APPROACH  
CHART - ICAO**

**AERODROME ELEV 451 FT  
HEIGHTS RELATED TO  
THR RWY36 - ELEV 451 FT**

**ROI ET / Roi Et (VTUV)**

**ILS or LOC z RWY36**

FIX/POINT		COORDINATES	
(IF) BEPSI	11.7D IROT	15° 55' 58.22" N	103° 45' 56.13" E
(FAP/FAF) UV305	5.4D IROT	16° 02' 19.35" N	103° 46' 13.13" E
MAPt (LOC only) THR RWY36	1.3D IROT	16° 06' 26.14" N	103° 46' 24.15" E
GP		16° 06' 35.76" N	103° 46' 20.54" E
LOC/DME	IROT	16° 07' 44.28" N	103° 46' 27.64" E

**INSTRUMENT  
APPROACH  
CHART - ICAO**

**AERODROME ELEV 451 FT  
HEIGHTS RELATED TO  
THR RWY36 - ELEV 451 FT**

**ROI ET / Roi Et (VTUV)**

**ILS or LOC z RWY36**

**WAYPOINT LIST**

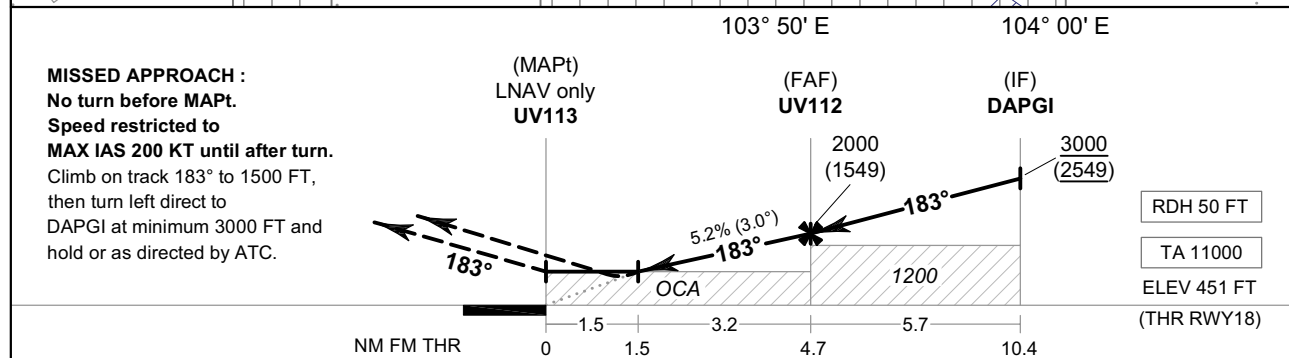
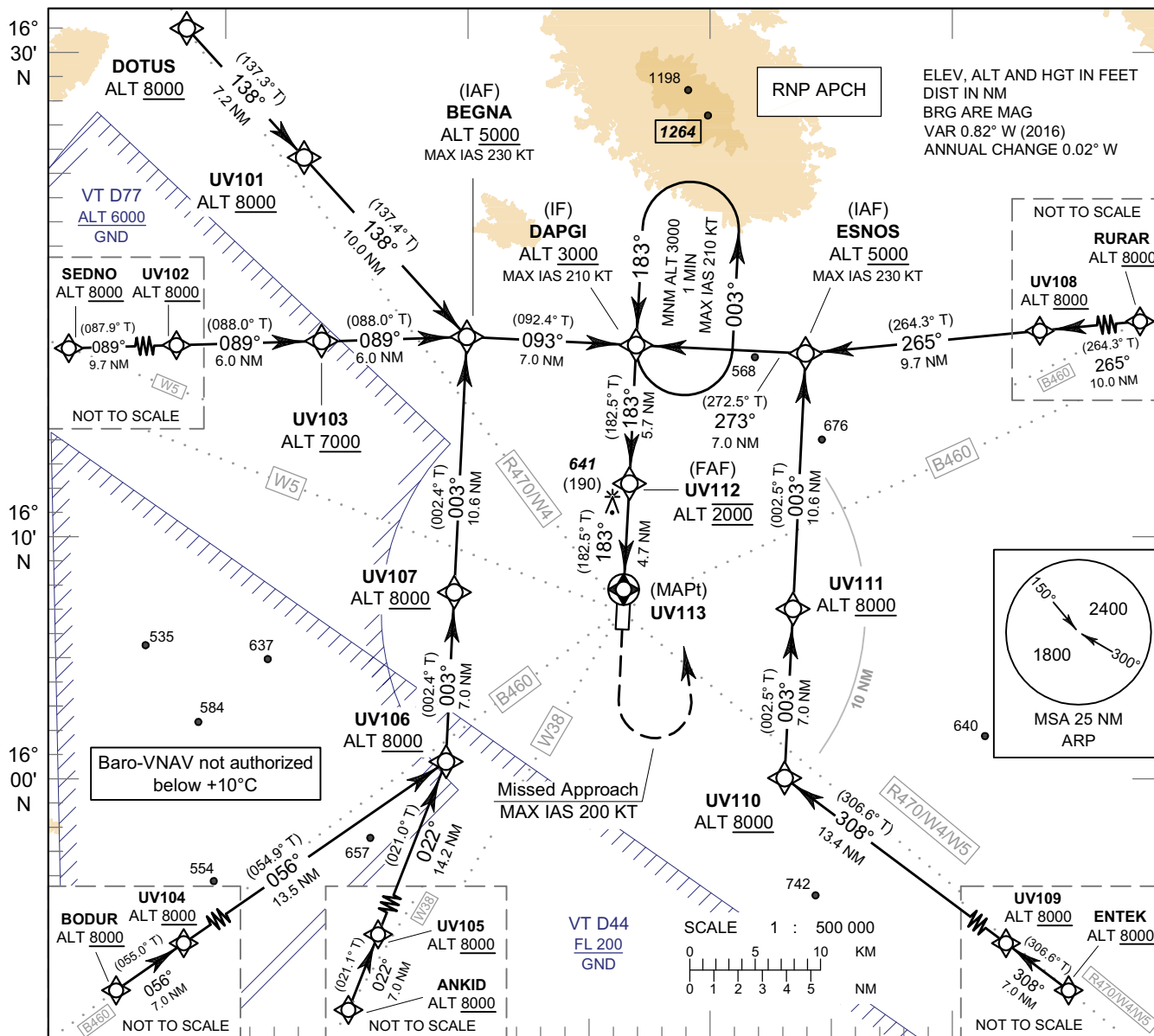
ILS or LOC z RWY36	
Waypoint Identifier	Coordinates
AGIRO	15° 51' 06.48" N 103° 51' 10.85" E
ANKID	15° 40' 48.67" N 103° 30' 57.40" E
ATNOD	15° 56' 08.67" N 103° 31' 24.04" E
BEPSI	15° 55' 58.22" N 103° 45' 56.13" E
BODUR	15° 48' 52.90" N 103° 21' 27.21" E
DOTUS	16° 31' 03.01" N 103° 27' 31.56" E
ENTEK	15° 47' 54.67" N 104° 10' 24.31" E
KATBU	15° 55' 48.14" N 104° 00' 28.29" E
RURAR	16° 19' 43.04" N 104° 14' 35.65" E
SEDNO	16° 17' 33.31" N 103° 17' 07.18" E
TEROX	15° 50' 53.58" N 103° 40' 54.75" E
UV301	16° 12' 09.50" N 103° 32' 05.74" E
UV302	16° 03' 10.05" N 103° 31' 42.32" E
UV303	16° 13' 45.01" N 104° 01' 17.65" E
UV304	16° 02' 49.48" N 104° 00' 47.58" E
UV305	16° 02' 19.35" N 103° 46' 13.13" E
UV306	16° 06' 26.14" N 103° 46' 24.15" E

**INSTRUMENT  
APPROACH  
CHART - ICAO**

**AERODROME ELEV 451 FT  
HEIGHTS RELATED TO  
THR RWY18 - ELEV 451 FT**

APP : 125.4 MHz  
TWR : 119.75 , 236.6 MHz  
ATIS : 319 kHz

**ROI ET / Roi Et (VTUV)**  
**RNAV (GNSS) RWY18**



OCA/H	A	B	C	D	NM to NEXT WPT	1.5 NM	2 NM	3 NM	4 NM	FAF			
LNAV/VNAV	750 (299)				Altitude (Height)	970 (519)	1135 (684)	1450 (999)	1765 (1314)	2000 (1549)			
LNAV	970 (519)				Ground Speed	knot	70	90	100	120	140	160	
Circling (OCH AAL)	1200 (749)				Rate of Descent	FAF-MAPt 5.2%	ft/min	369	474	527	632	737	843

CHANGE : NEW CHART.

**INSTRUMENT  
APPROACH  
CHART - ICAO**

**AERODROME ELEV 451 FT  
HEIGHTS RELATED TO  
THR RWY18 - ELEV 451 FT**

**ROI ET / Roi Et (VTUV)**

**RNAV (GNSS) RWY18**

**TABULAR DESCRIPTION (1)**

RNAV (GNSS) RWY18											
Serial Number	Path Descriptor	Waypoint Identifier	Flyover	Course ° M (° T)	Magnetic Variation	Distance (NM)	Turn Direction	Altitude (FT)	Speed (KT)	VPA/ TCH	Navigation Specification
010	IF	DOTUS	-	-	+0.90	-	-	+8000	-	-	RNP APCH
020	TF	UV101	-	138°(137.3°)	+0.90	7.2	-	+8000	-	-	RNP APCH
030	TF	(IAF) BEGNA	-	138°(137.4°)	+0.90	10.0	L	+5000	-230	-	RNP APCH
040	TF	(IF) DAPGI	-	093°(092.4°)	+0.90	7.0	-	+3000	-210	-	RNP APCH
010	IF	SEDNO	-	-	+0.90	-	-	+8000	-	-	RNP APCH
020	TF	UV102	-	089°(087.9°)	+0.90	9.7	-	+8000	-	-	RNP APCH
030	TF	UV103	-	089°(088.0°)	+0.90	6.0	-	+7000	-	-	RNP APCH
040	TF	(IAF) BEGNA	-	089°(088.0°)	+0.90	6.0	R	+5000	-230	-	RNP APCH
050	TF	(IF) DAPGI	-	093°(092.4°)	+0.90	7.0	-	+3000	-210	-	RNP APCH
010	IF	BODUR	-	-	+0.90	-	-	+8000	-	-	RNP APCH
020	TF	UV104	-	056°(055.0°)	+0.90	7.0	-	+8000	-	-	RNP APCH
030	TF	UV106	-	056°(054.9°)	+0.90	13.5	L	+8000	-	-	RNP APCH
040	TF	UV107	-	003°(002.4°)	+0.90	7.0	-	+8000	-	-	RNP APCH
050	TF	(IAF) BEGNA	-	003°(002.4°)	+0.90	10.6	R	+5000	-230	-	RNP APCH
060	TF	(IF) DAPGI	-	093°(092.4°)	+0.90	7.0	-	+3000	-210	-	RNP APCH
010	IF	ANKID	-	-	+0.90	-	-	+8000	-	-	RNP APCH
020	TF	UV105	-	022°(021.1°)	+0.90	7.0	-	+8000	-	-	RNP APCH
030	TF	UV106	-	022°(021.0°)	+0.90	14.2	L	+8000	-	-	RNP APCH
040	TF	UV107	-	003°(002.4°)	+0.90	7.0	-	+8000	-	-	RNP APCH
050	TF	(IAF) BEGNA	-	003°(002.4°)	+0.90	10.6	R	+5000	-230	-	RNP APCH
060	TF	(IF) DAPGI	-	093°(092.4°)	+0.90	7.0	-	+3000	-210	-	RNP APCH
010	IF	ENTEK	-	-	+0.90	-	-	+8000	-	-	RNP APCH
020	TF	UV109	-	308°(306.6°)	+0.90	7.0	-	+8000	-	-	RNP APCH
030	TF	UV110	-	308°(306.6°)	+0.90	13.4	R	+8000	-	-	RNP APCH
040	TF	UV111	-	003°(002.5°)	+0.90	7.0	-	+8000	-	-	RNP APCH
050	TF	(IAF) ESNOS	-	003°(002.5°)	+0.90	10.6	L	+5000	-230	-	RNP APCH
060	TF	(IF) DAPGI	-	273°(272.5°)	+0.90	7.0	-	+3000	-210	-	RNP APCH

**INSTRUMENT  
APPROACH  
CHART - ICAO**

**AERODROME ELEV 451 FT  
HEIGHTS RELATED TO  
THR RWY18 - ELEV 451 FT**

**ROI ET / Roi Et (VTUV)  
  
RNAV (GNSS) RWY18**

**TABULAR DESCRIPTION (2)**

RNAV (GNSS) RWY18											
Serial Number	Path Descriptor	Waypoint Identifier	Flyover	Course ° M (° T)	Magnetic Variation	Distance (NM)	Turn Direction	Altitude (FT)	Speed (KT)	VPA/ TCH	Navigation Specification
010	IF	RURAR	-	-	+0.90	-	-	+8000	-	-	RNP APCH
020	TF	UV108	-	265°(264.3°)	+0.90	10.0	-	+8000	-	-	RNP APCH
030	TF	(IAF) ESNOS	-	265°(264.3°)	+0.90	9.7	R	+5000	-230	-	RNP APCH
040	TF	(IF) DAPGI	-	273°(272.5°)	+0.90	7.0	-	+3000	-210	-	RNP APCH
010	IF	(IF) DAPGI	-	-	+0.90	-	-	+3000	-210	-	RNP APCH
020	TF	(FAF) UV112	-	183°(182.5°)	+0.90	5.7	-	@2000	-	-	RNP APCH
030	TF	(MAPt@THR18) UV113	Y	183°(182.5°)	+0.90	4.7	-	@501	-	-3.0/50	RNP APCH
040	CA	-	-	183°(182.5°)	+0.90	-	-	+1500	-200	-	RNP APCH
050	DF	(IF) DAPGI	-	-	+0.90	-	L	+3000	-200	-	RNP APCH
060	HM	(IF) DAPGI	Y	183°(182.5°)	+0.90	1 minute	L	+3000	-210	-	RNP APCH

**WAYPOINT LIST**

RNAV (GNSS) RWY18					
Waypoint Identifier	Coordinates		Waypoint Identifier	Coordinates	
ANKID	15° 40' 48.67" N	103° 30' 57.40" E	UV103	16° 18' 07.60" N	103° 33' 24.87" E
BEGNA	16° 18' 20.39" N	103° 39' 38.95" E	UV104	15° 52' 54.95" N	103° 27' 24.01" E
BODUR	15° 48' 52.90" N	103° 21' 27.21" E	UV105	15° 47' 22.23" N	103° 33' 33.97" E
DAPGI	16° 18' 02.38" N	103° 46' 55.25" E	UV106	16° 00' 42.97" N	103° 38' 52.38" E
DOTUS	16° 31' 03.01" N	103° 27' 31.56" E	UV107	16° 07' 44.34" N	103° 39' 10.92" E
ENTEK	15° 47' 54.67" N	104° 10' 24.31" E	UV108	16° 18' 42.99" N	104° 04' 14.85" E
ESNOS	16° 17' 44.13" N	103° 54' 11.52" E	UV109	15° 52' 06.05" N	104° 04' 34.48" E
RURAR	16° 19' 43.04" N	104° 14' 35.65" E	UV110	16° 00' 06.74" N	103° 53' 23.67" E
SEDNO	16° 17' 33.31" N	103° 17' 07.18" E	UV111	16° 07' 08.09" N	103° 53' 42.72" E
UV101	16° 25' 43.72" N	103° 32' 36.37" E	UV112	16° 12' 17.45" N	103° 46' 39.83" E
UV102	16° 17' 54.63" N	103° 27' 10.81" E	UV113	16° 07' 34.53" N	103° 46' 27.20" E

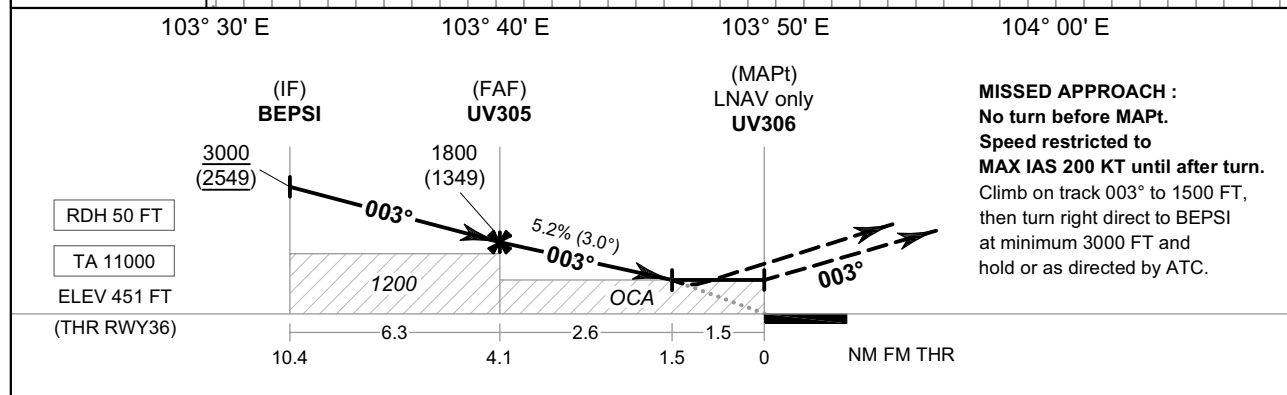
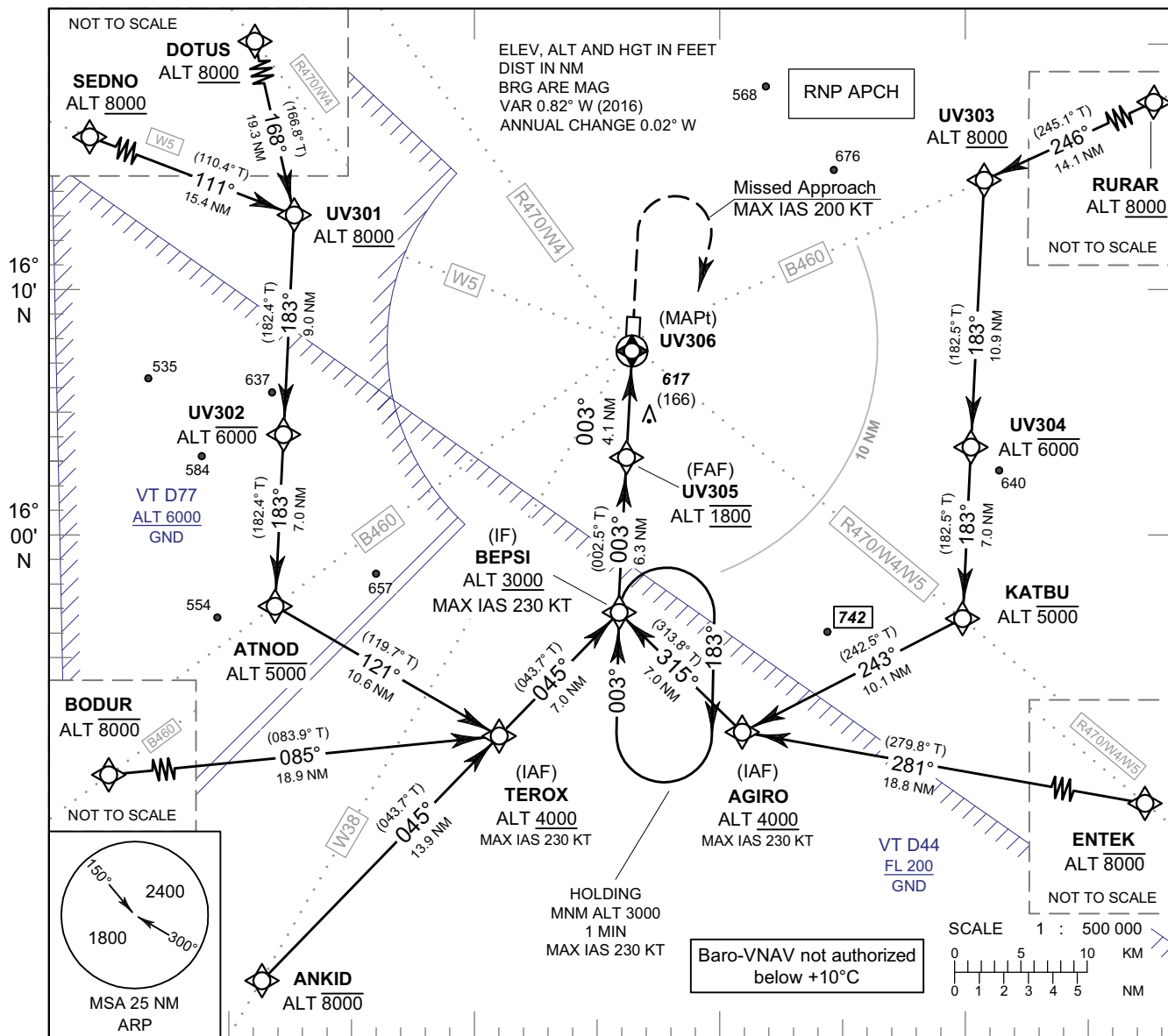
**INTENTIONALLY BLANK**

**INSTRUMENT  
APPROACH  
CHART - ICAO**

**AERODROME ELEV 451 FT  
HEIGHTS RELATED TO  
THR RWY36 - ELEV 451 FT**

APP : 125.4 MHz  
TWR : 119.75 , 236.6 MHz  
ATIS : 319 kHz

**ROI ET / Roi Et (VTUV)**  
**RNAV (GNSS) RWY36**



OCA/H	A	B	C	D	NM to NEXT WPT	FAF	4 NM	3 NM	2 NM	1.5 NM			
LNAV/VNAV	800 (349)				Altitude (Height)	1800 (1349)	1765 (1314)	1450 (999)	1135 (684)	970 (519)			
LNAV	970 (519)				Ground Speed	knot	70	90	100	120	140	160	
Circling (OCH AAL)	1200 (749)				Rate of Descent FAF-MAPt	5.2%	ft/min	369	474	527	632	737	843

CHANGE : NEW CHART.

**INSTRUMENT  
APPROACH  
CHART - ICAO**

**AERODROME ELEV 451 FT  
HEIGHTS RELATED TO  
THR RWY36 - ELEV 451 FT**

**ROI ET / Roi Et (VTUV)**

**RNAV (GNSS) RWY36**

**TABULAR DESCRIPTION**

RNAV (GNSS) RWY36											
Serial Number	Path Descriptor	Waypoint Identifier	Flyover	Course ° M (° T)	Magnetic Variation	Distance (NM)	Turn Direction	Altitude (FT)	Speed (KT)	VPA/TCH	Navigation Specification
010	IF	ANKID	-	-	+0.90	-	-	-8000	-	-	RNP APCH
020	TF	(IAF) TEROX	-	045°(043.7°)	+0.90	13.9	-	+4000	-230	-	RNP APCH
030	TF	(IF) BEPSI	-	045°(043.7°)	+0.90	7.0	-	+3000	-230	-	RNP APCH
010	IF	BODUR	-	-	+0.90	-	-	-8000	-	-	RNP APCH
020	TF	(IAF) TEROX	-	085°(083.9°)	+0.90	18.9	L	+4000	-230	-	RNP APCH
030	TF	(IF) BEPSI	-	045°(043.7°)	+0.90	7.0	-	+3000	-230	-	RNP APCH
010	IF	SEDNO	-	-	+0.90	-	-	+8000	-	-	RNP APCH
020	TF	UV301	-	111°(110.4°)	+0.90	15.4	R	+8000	-	-	RNP APCH
030	TF	UV302	-	183°(182.4°)	+0.90	9.0	-	-6000	-	-	RNP APCH
040	TF	ATNOD	-	183°(182.4°)	+0.90	7.0	L	-5000	-	-	RNP APCH
050	TF	(IAF) TEROX	-	121°(119.7°)	+0.90	10.6	L	+4000	-230	-	RNP APCH
060	TF	(IF) BEPSI	-	045°(043.7°)	+0.90	7.0	-	+3000	-230	-	RNP APCH
010	IF	DOTUS	-	-	+0.90	-	-	+8000	-	-	RNP APCH
020	TF	UV301	-	168°(166.8°)	+0.90	19.3	R	+8000	-	-	RNP APCH
030	TF	UV302	-	183°(182.4°)	+0.90	9.0	-	-6000	-	-	RNP APCH
040	TF	ATNOD	-	183°(182.4°)	+0.90	7.0	L	-5000	-	-	RNP APCH
050	TF	(IAF) TEROX	-	121°(119.7°)	+0.90	10.6	L	+4000	-230	-	RNP APCH
060	TF	(IF) BEPSI	-	045°(043.7°)	+0.90	7.0	-	+3000	-230	-	RNP APCH
010	IF	ENTEK	-	-	+0.90	-	-	-8000	-	-	RNP APCH
020	TF	(IAF) AGIRO	-	281°(279.8°)	+0.90	18.8	R	+4000	-230	-	RNP APCH
030	TF	(IF) BEPSI	-	315°(313.8°)	+0.90	7.0	-	+3000	-230	-	RNP APCH
010	IF	RURAR	-	-	+0.90	-	-	+8000	-	-	RNP APCH
020	TF	UV303	-	246°(245.1°)	+0.90	14.1	L	+8000	-	-	RNP APCH
030	TF	UV304	-	183°(182.5°)	+0.90	10.9	-	-6000	-	-	RNP APCH
040	TF	KATBU	-	183°(182.5°)	+0.90	7.0	R	-5000	-	-	RNP APCH
050	TF	(IAF) AGIRO	-	243°(242.5°)	+0.90	10.1	R	+4000	-230	-	RNP APCH
060	TF	(IF) BEPSI	-	315°(313.8°)	+0.90	7.0	-	+3000	-230	-	RNP APCH
010	IF	BEPSI (IF)	-	-	+0.90	-	-	+3000	-230	-	RNP APCH
020	TF	(FAF) UV305	-	003°(002.5°)	+0.90	6.3	-	@1800	-	-	RNP APCH
030	TF	(MAPt@THR36) UV306	Y	003°(002.5°)	+0.90	4.1	-	@501	-	-3.0/50	RNP APCH
040	CA	-	-	003°(002.5°)	+0.90	-	-	+1500	-200	-	RNP APCH
050	DF	(IF) BEPSI	-	-	+0.90	-	R	+3000	-200	-	RNP APCH
060	HM	(IF) BEPSI	Y	003°(002.5°)	+0.90	1 minute	R	+3000	-230	-	RNP APCH



INSTRUMENT  
APPROACH  
CHART - ICAOAERODROME ELEV 451 FT  
HEIGHTS RELATED TO  
THR RWY36 - ELEV 451 FT

ROI ET / Roi Et (VTUV)

RNAV (GNSS) RWY36

## WAYPOINT LIST

RNAV (GNSS) RWY36	
Waypoint Identifier	Coordinates
AGIRO	15° 51' 06.48" N 103° 51' 10.85" E
ANKID	15° 40' 48.67" N 103° 30' 57.40" E
ATNOD	15° 56' 08.67" N 103° 31' 24.04" E
BEPSI	15° 55' 58.22" N 103° 45' 56.13" E
BODUR	15° 48' 52.90" N 103° 21' 27.21" E
DOTUS	16° 31' 03.01" N 103° 27' 31.56" E
ENTEK	15° 47' 54.67" N 104° 10' 24.31" E
KATBU	15° 55' 48.14" N 104° 00' 28.29" E
RURAR	16° 19' 43.04" N 104° 14' 35.65" E
SEDNO	16° 17' 33.31" N 103° 17' 07.18" E
TEROX	15° 50' 53.58" N 103° 40' 54.75" E
UV301	16° 12' 09.50" N 103° 32' 05.74" E
UV302	16° 03' 10.05" N 103° 31' 42.32" E
UV303	16° 13' 45.01" N 104° 01' 17.65" E
UV304	16° 02' 49.48" N 104° 00' 47.58" E
UV305	16° 02' 19.35" N 103° 46' 13.13" E
UV306	16° 06' 26.14" N 103° 46' 24.15" E

**INTENTIONALLY BLANK**