

VTUK AD 2.1 AERODROME LOCATION INDICATOR AND NAME

VTUK - KHON KAEN / KHON KAEN AIRPORT

VTUK AD 2.2 AERODROME GEOGRAPHICAL AND ADMINISTRATIVE DATA

1	ARP coordinates and site at AD	162752.39N 1024656.19E
2	Direction and distance from (city)	APRX 8 KM SE from the city
3	Elevation/Reference temperature	670 FT/37°C
4	Geoid Undulation at AD ELEV PSN	NIL
5	MAG VAR/Annual change	0.80°W(2016)/0.01°W
5	AD Administration, address, telephone, telefax, telex, AFS	Director of Khon Kaen Airport Khon Kaen Airport 68/24 Moo 5, Tambon Banped Amphoe Muang Khon Kaen Province 40000, Thailand Tel: +664 346 8170-5 Fax: +664 346 8186 AFS: VTUKYDYX
6	Types of traffic permitted (IFR/VFR)	IFR/VFR
7	Remarks	Operator: Department of Airports

VTUK AD 2.3 OPERATIONAL HOURS

1	Aerodrome Operator	2300-1500
2	Customs and immigration	2300-1500 Other than this period on request
3	Health and sanitation	2300-1500 Other than this period on request
4	AIS Briefing Office	2300-1400
5	ATS Reporting Office (ARO)	NIL
6	MET Briefing Office	NIL
7	ATS	2300-1430 Other than this period 1 HR PN to ATC
8	Fuelling	2400-1300 Other than this period on request
9	Handling	NIL
10	Security	NIL
11	De-icing	NIL
12	Remarks	NIL

VTUK AD 2.4 HANDLING SERVICES AND FACILITIES

1	Cargo-handling facilities	NIL
2	Fuel/oil types	JET A-1
3	Fuelling facilities/capacity	1 JET A-1 Refueller @ 12,000 L 1 JET A-1 Refueller @ 8,000 L 1 AVGAS Refueller @ 3,000 L
4	De-icing facilities	NIL
5	Hangar space for visiting aircraft	NIL
6	Repair facilities for visiting aircraft	NIL
7	Remarks	NIL

VTUK AD 2.5 PASSENGER FACILITIES

1	Hotels	In the city
2	Restaurants	Available at the airport and in the city
3	Transportation	Taxi and Car Rental and Bus
4	Medical facilities	NIL
5	Bank and Post Office	Bank: open from 0030-1300 Post office: open from 0330-1330
6	Tourist Office	NIL
7	Remarks	NIL

VTUK AD 2.6 RESCUE AND FIRE FIGHTING SERVICES

1	AD category for fire fighting	Category 8
2	Rescue equipment	Yes
3	Capability for removal of disabled aircraft	NIL
4	Remarks	NIL

VTUK AD 2.7 SEASONAL AVAILABILITY - CLEARING

1	Types of clearing equipment	NIL
2	Clearance priorities	NIL
3	Remarks	The aerodrome is available all seasons.

VTUK AD 2.8 APRONS, TAXIWAYS AND CHECK LOCATIONS/POSITIONS DATA

1	Apron surface and strength	Surface: Concrete Strength: PCN 65/R/C/X/T
2	Taxiway width, surface and strength	Width: 23 M Surface: Concrete and asphalt Strength: PCN 65/F/C/X/T
3	Altimeter checkpoint location and elevation	NIL
4	VOR checkpoints	NIL
5	INS checkpoints	NIL
6	Remarks	NIL

VTUK AD 2.9 SURFACE MOVEMENT GUIDANCE AND CONTROL SYSTEM AND MARKINGS

1	Use of aircraft stand ID signs, TWY guide lines and visual docking/parking guidance system of aircraft stands	NIL
2	RWY and TWY markings and LGT	RWY and TWY: Marked and lighted
3	Stop bars	NIL
4	Remarks	NIL

VTUK AD 2.10 AERODROME OBSTACLES

In approach/TKOF areas			In circling areas and at AD		Remarks
1			2		3
RWY/Area affected	Obstacle type Elevation Markings/LGT	Coordinates	Obstacle type Elevation Markings/LGT	Coordinates	
a	b	c	a	b	
NIL	NIL	NIL	NIL	NIL	NIL

VTUK AD 2.11 METEOROLOGICAL INFORMATION PROVIDED

1	Associated MET Office	Upper Northeastern Meteorological Center, Thai Meteorological Department (TMD)
2	Hours of service MET Office outside hours	H24 NIL
3	Office responsible for TAF preparation Periods of validity	Upper Northeastern Meteorological Center 24 HR
4	Type of landing forecast Interval of issuance	TREND 1 HR
5	Briefing/consultation provided	Personal Consultation Tel: +664 346 8224 Fax: +664 346 8086
6	Flight documentation Language(s) used	Charts, Tabular forms and Abbreviated Plain Language Texts English
7	Charts and other information available for briefing or consultation	S, U85, U70, U50, U40, U30, U25, U20, SWH, SWM, SWL, P85, P70, P50, P40, P30, P25, P20, P15, satellite and radar images
8	Supplementary equipment available for providing information	Automated Weather Observation System (AWOS), Low Level Wind Shear Alert System (LLWAS) and Weather Radar
9	ATS units provided with information	Khon Kaen TWR
10	Additional information (limitation of service, etc.)	NIL

VTUK AD 2.12 RUNWAY PHYSICAL CHARACTERISTICS

Designations RWY NR	TRUE BRG	Dimensions of RWY(M)	Strength (PCN) and surface of RWY and SWY	THR coordinates RWY end coordinates THR geoid undulation	THR elevation and highest elevation of TDZ of precision APP RWY
1	2	3	4	5	6
03	033.94°	3050x45	PCN 65/F/C/X/T Concrete and asphalt	162722.26N 1024636.04E	THR 601 FT TDZ 635 FT
21	213.94°	3050x45	PCN 65/F/C/X/T Concrete and asphalt	162837.46N 1024726.33E	THR 670 FT TDZ 670 FT

Slope of RWY-SWY	SWY dimensions (M)	CWY dimensions (M)	Strip dimensions (M)	OFZ	Remarks
7	8	9	10	11	12
+0.80%	NIL	NIL	3170x300	NIL	NIL
-0.60%	NIL	NIL	3170x300	NIL	NIL

VTUK AD 2.13 DECLARED DISTANCES

RWY Designator	TORA (M)	TODA (M)	ASDA (M)	LDA (M)	Remarks
1	2	3	4	5	6
03	3050	3050	3050	2900	NIL
21	3050	3050	3050	2900	NIL

VTUK AD 2.14 APPROACH AND RUNWAY LIGHTING

RWY Designator	APCH LGT type LEN INTST	THR LGT colour WBAR	VASIS (MEHT) PAPI	TDZ, LGT LEN	RWY Centre Line LGT Length, spacing, colour, INTST	RWY edge LGT LEN, spacing, colour INTST	RWY End LGT colour WBAR	SWY LGT LEN (M) colour	Remarks
1	2	3	4	5	6	7	8	9	10
03	RTIL	Green WBAR	PAPI Left 3°	NIL	NIL	3050 M 60 M White, LIH	Red	NIL	NIL
21	RTIL	Green WBAR	PAPI Left 3°	NIL	NIL	3050 M 60 M White, LIH	Red	NIL	NIL

VTUK AD 2.15 OTHER LIGHTING, SECONDARY POWER SUPPLY

1	ABN/IBN location, characteristics and hours of operation	ABN: At Tower Building, FLG W G EV 7 SEC
2	LDI location and LGT Anemometer location and LGT	NIL
3	TWY edge and centre line lighting	Edge: All taxiway
4	Secondary power supply/switch-over time	Secondary power supply to all lighting at the airport, Switch-over time: 15 SEC
5	Remarks	Flares 2 HR PN

VTUK AD 2.16 HELICOPTER LANDING AREA

1	Coordinates TLOF or THR of FATO Geoid undulation	NIL
2	TLOF and/or FATO elevation M/FT	NIL
3	TLOF and FATO area dimensions, surface, strength, marking	NIL
4	True and MAG BRG of FATO	NIL
5	Declared distance available	NIL
6	APP and FATO lighting	NIL
7	Remarks	NIL

VTUK AD 2.17 ATS AIRSPACE

1	Designation and lateral limits	A circle of 5 NM radius centred on KKN DVOR/DME (162814.73N1024716.07E)
2	Vertical limits	2000 FT/AGL
3	Airspace classification	C
4	ATS unit call sign Language(s)	KHON KAEN TOWER English, Thai
5	Transition altitude	11000 FT
6	Remarks	NIL

VTUK AD 2.18 ATS COMMUNICATION FACILITIES

Service designation	Call sign	Frequency	Hours of operation	Remarks
1	2	3	4	5
APP	Khon Kaen Approach	123.4 MHZ ²⁾ 240.0 MHZ	2300-1500	¹⁾ Emergency Frequency ²⁾ Other this period 3 HR PN to ATC
TWR	Khon Kaen Tower	121.5 MHZ ¹⁾ 122.25 MHZ ²⁾ 236.6 MHZ	2300-1500	
GND	Khon Kaen Ground	121.9 MHZ	2300-1500	
ATIS	Khon Kaen Airport	126.85 MHZ	2300-1400	

VTUK AD 2.19 RADIO NAVIGATION AND LANDING AIDS

Type of aid, MAG VAR CAT of ILS/MLS (For VOR/ILS/MLS, give declination)	ID	Frequency	Hours of operation	Position of transmitting antenna coordinates	Elevation of DME transmitting antenna	Remarks
1	2	3	4	5	6	7
NDB	KN	393 KHZ	H24	162743.41N 1024704.18E	NIL	NIL
DVOR/DME	KKN	114.9 MHZ CH96X	H24	162814.73N 1024716.07E	NIL	NIL

VTUK AD 2.20 LOCAL AERODROME REGULATIONS

1. LOCAL PROCEDURES

1.1 Landing and Take off

Aircraft intended to landing/take off at Khon Kaen Airport take off RWY03 and land at RWY21 only, except for the safe of aircraft.

VTUK AD 2.21 NOISE ABATEMENT PROCEDURES

NIL

VTUK AD 2.22 FLIGHT PROCEDURES

1. VFR PROCEDURES

Details of VFR entry and exit procedures, see charts.

VTUK AD 2.23 ADDITIONAL INFORMATION

NIL

VTUK AD 2.24 CHARTS RELATED TO AN AERODROME

Chart name	Page
Aerodrome Chart - ICAO	AD 2-VTUK-2-1
Aircraft Parking/Docking Chart - ICAO	AD 2-VTUK-2-3
Standard Departure Chart - Instrument (SID) - ICAO - RNAV RWY 03 - CEDIA1A OSAKI1A	AD 2-VTUK-6-1
Standard Departure Chart - Instrument (SID) - ICAO - RNAV RWY 03 - CEDIA1A OSAKI1A (Tabular description)	AD 2-VTUK-6-2
Standard Departure Chart - Instrument (SID) - ICAO - RNAV RWY 21 - CEDIA1B OSAKI1B	AD 2-VTUK-6-3
Standard Departure Chart - Instrument (SID) - ICAO - RNAV RWY 21 - CEDIA1B OSAKI1B (Tabular description)	AD 2-VTUK-6-4
Instrument Approach Chart - ICAO - NDB z RWY 03	AD 2-VTUK-8-1
Instrument Approach Chart - ICAO - NDB RWY 21	AD 2-VTUK-8-3
Instrument Approach Chart - ICAO - VOR y RWY 03	AD 2-VTUK-8-5
Instrument Approach Chart - ICAO - VOR y RWY 03 (Fix and point list table)	AD 2-VTUK-8-6
Instrument Approach Chart - ICAO - VOR y RWY 21	AD 2-VTUK-8-7
Instrument Approach Chart - ICAO - VOR y RWY 21 (Fix and point list table)	AD 2-VTUK-8-8
Instrument Approach Chart - ICAO - VOR z RWY 03	AD 2-VTUK-8-9
Instrument Approach Chart - ICAO - VOR z RWY 03 (Fix and point list table)	AD 2-VTUK-8-10
Instrument Approach Chart - ICAO - VOR z RWY 21	AD 2-VTUK-8-11
Instrument Approach Chart - ICAO - VOR z RWY 21 (Fix and point list table)	AD 2-VTUK-8-12
Instrument Approach Chart - ICAO - RNAV (GNSS) RWY 03	AD 2-VTUK-8-13
Instrument Approach Chart - ICAO - RNAV (GNSS) RWY 03 (Tabular description)	AD 2-VTUK-8-14
Instrument Approach Chart - ICAO - RNAV (GNSS) RWY 21	AD 2-VTUK-8-15
Instrument Approach Chart - ICAO - RNAV (GNSS) RWY 21 (Tabular description)	AD 2-VTUK-8-16
VFR ENTRY PROCEDURE CHART - RWY 03/21 (NORTH)	AD 2-VTUK-9-1
VFR ENTRY PROCEDURE CHART - RWY 03/21 (NORTH) (Tabular description)	AD 2-VTUK-9-2
VFR ENTRY PROCEDURE CHART - RWY 03/21 (SOUTH)	AD 2-VTUK-9-3
VFR ENTRY PROCEDURE CHART - RWY 03/21 (SOUTH) (Tabular description)	AD 2-VTUK-9-4
VFR EXIT PROCEDURE CHART - RWY 03 (NORTH)	AD 2-VTUK-9-5
VFR EXIT PROCEDURE CHART - RWY 03 (NORTH) (Tabular description)	AD 2-VTUK-9-6
VFR EXIT PROCEDURE CHART - RWY 03 (SOUTH)	AD 2-VTUK-9-7
VFR EXIT PROCEDURE CHART - RWY 03 (SOUTH) (Tabular description)	AD 2-VTUK-9-8
VFR EXIT PROCEDURE CHART - RWY 21 (NORTH)	AD 2-VTUK-9-9
VFR EXIT PROCEDURE CHART - RWY 21 (NORTH) (Tabular description)	AD 2-VTUK-9-10
VFR EXIT PROCEDURE CHART - RWY 21 (SOUTH)	AD 2-VTUK-9-11
VFR EXIT PROCEDURE CHART - RWY 21 (SOUTH) (Tabular description)	AD 2-VTUK-9-12

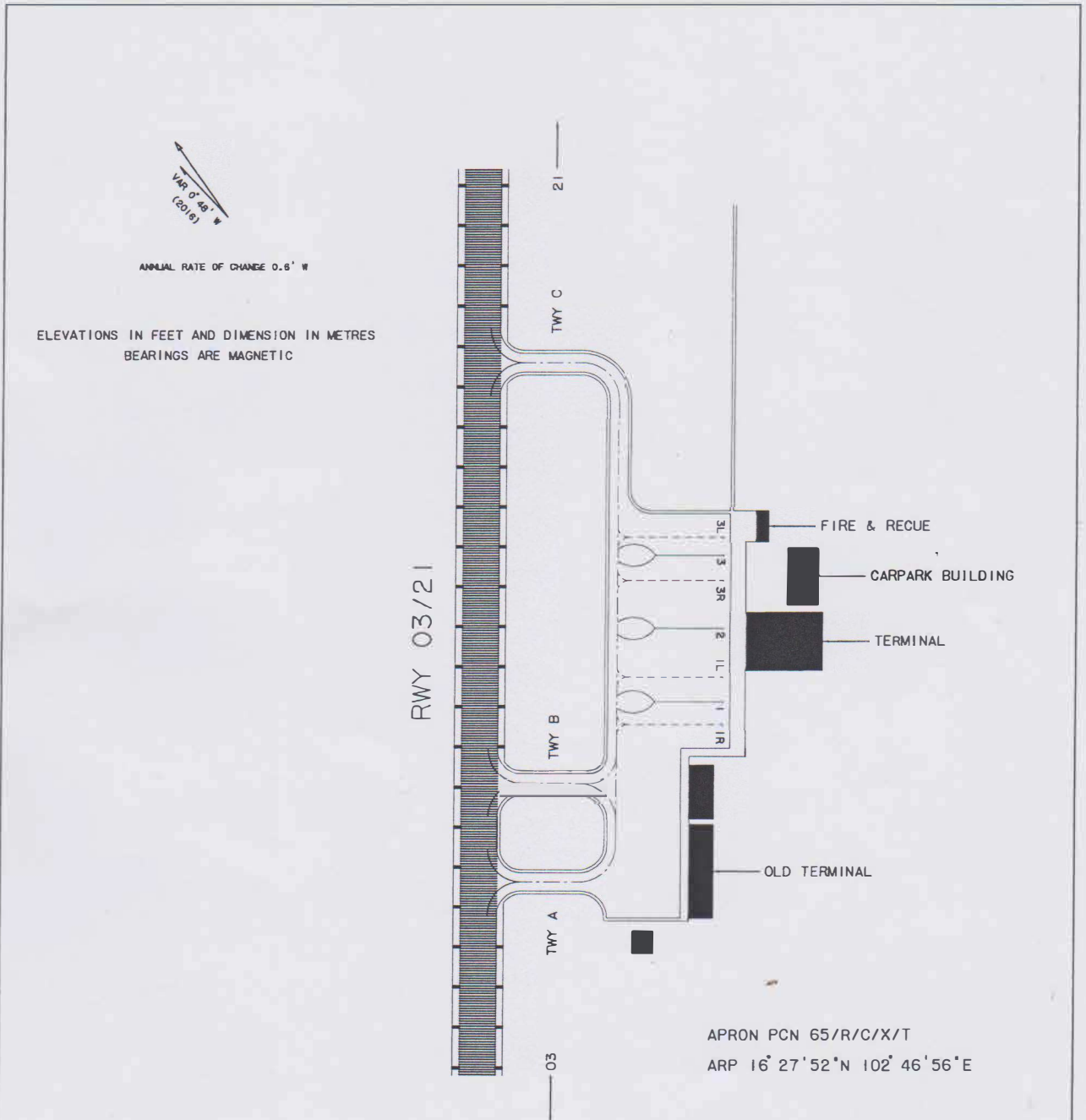
INTENTIONALLY BLANK

AIRCRAFT PARKING /
DOCKING CHART - ICAO

APRON ELEV 633 ft
193 m

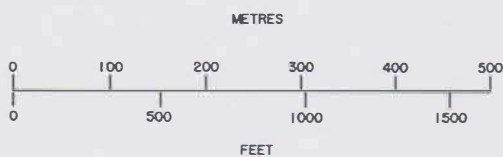
TWR 122.25
236.60

KHON KAEN /
Khon Kaen



AIRCRAFT STAND COORDINATES

NR	LAT (N)	LONG (E)	UP TO
1	$16^{\circ} 27' 53.40'' N$	$102^{\circ} 47' 08.88'' E$	A 330-300
1L	$16^{\circ} 27' 54.26'' N$	$102^{\circ} 47' 09.45'' E$	A 320-200
1R	$16^{\circ} 27' 52.78'' N$	$102^{\circ} 47' 08.47'' E$	A 320-200
2	$16^{\circ} 27' 55.90'' N$	$102^{\circ} 47' 10.55'' E$	A 330-300
3	$16^{\circ} 27' 58.40'' N$	$102^{\circ} 47' 12.22'' E$	A 330-300
3L	$16^{\circ} 27' 59.02'' N$	$102^{\circ} 47' 12.63'' E$	A 320-200
3R	$16^{\circ} 27' 57.54'' N$	$102^{\circ} 47' 11.65'' E$	A 320-200



Remark : COORDINATES ARE WGS-84

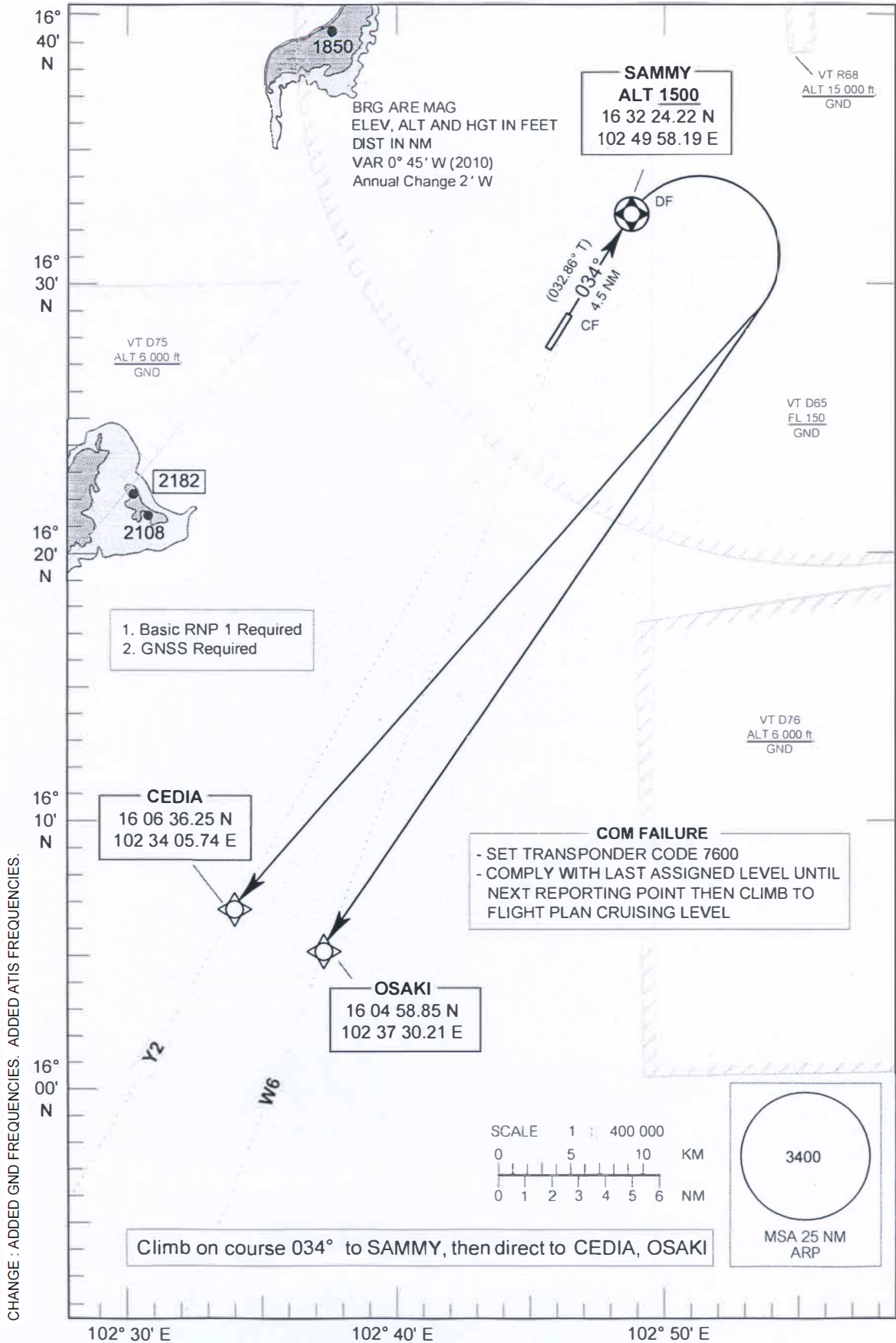
INTENTIONALLY BLANK

STANDARD DEPARTURE CHART -
INSTRUMENT (SID) - ICAO

APP : 123.4, 240.0
TWR : 122.25, 236.6
GND : 121.9
ATIS : 126.85

KHON KAEN / Khon Kaen (VTUK)
RNAV RWY 03
CEDIA 1A
OSAKI 1A

TRANSITION ALTITUDE
11000 FT



STANDARD DEPARTURE CHART -
INSTRUMENT (SID) - ICAO

KHON KAEN / Khon Kaen (VTUK)
RNAV RWY 03
CEDIA 1A
OSAKI 1A

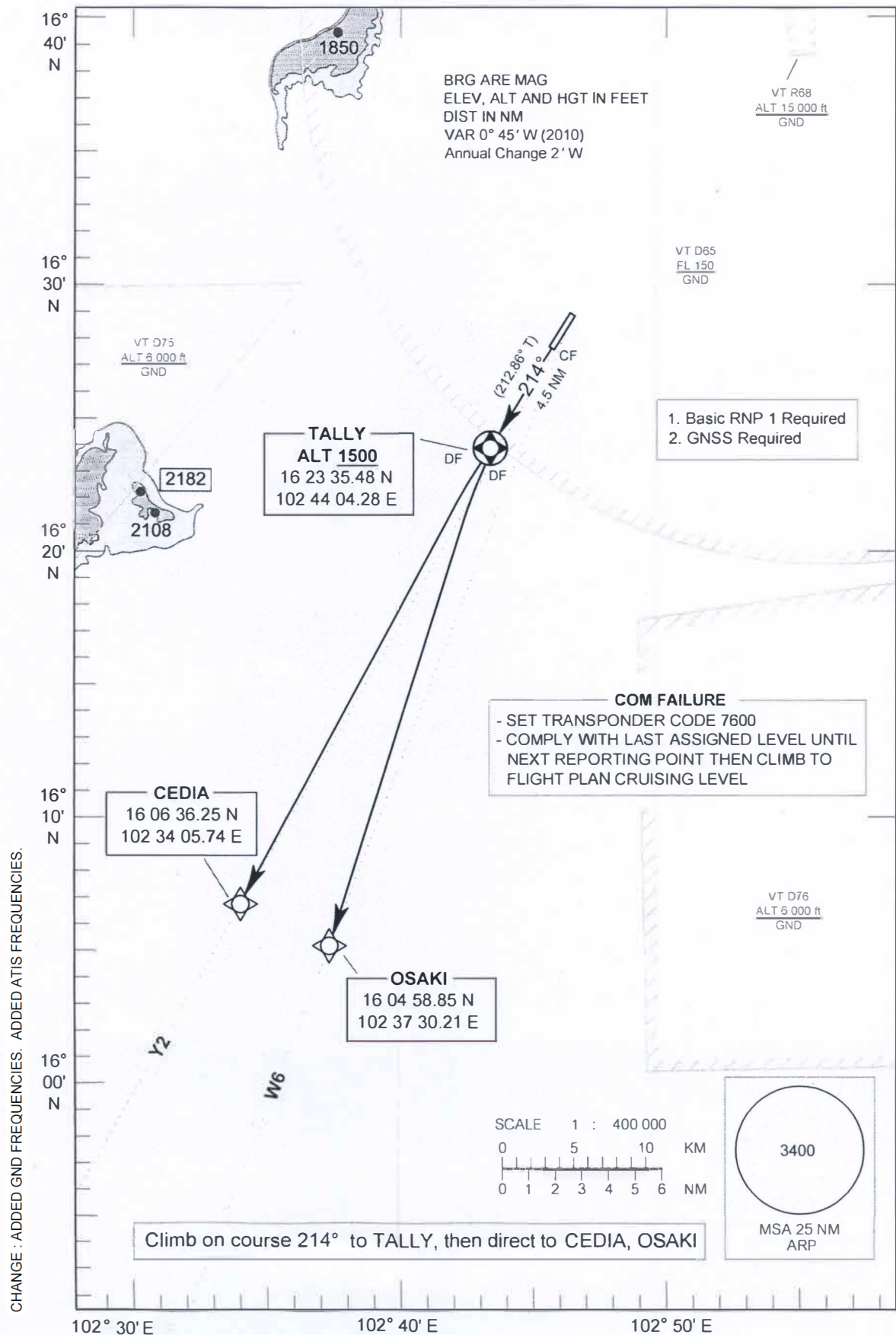
Serial Number	Path Descriptor	Waypoint Identifier	WGS-84 Coordinates		Flyover	Course ° M (° T)	Magnetic Variation	Distance (NM)	Turn Direction	Altitude (FT)	Speed (KT)	VPA/ TCH	Navigation Specification
			Latitude	Longitude									
001	-	DER RWY03	16 28 37.46 N	102 47 26.33 E	-	-	0.88	-	-	-	-	-	B-RNP1
002	CF	SAMMY	16 32 24.22 N	102 49 58.19 E	Y	034°(032.86°)	0.88	4.5	R	1500+	-	-	B-RNP1
003	DF	CEDIA	16 06 36.25 N	102 34 05.74 E	-	-	0.88	-	-	-	-	-	B-RNP1
004	DF	OSAKI	16 04 58.85 N	102 37 30.21 E	-	-	0.88	-	-	-	-	-	B-RNP1

STANDARD DEPARTURE CHART -
INSTRUMENT (SID) - ICAO

APP : 123.4, 240.0
TWR : 122.25, 236.6
GND : 121.9
ATIS : 126.85

KHON KAEN / Khon Kaen (VTUK)
RNAV RWY 21
CEDIA 1B
OSAKI 1B

TRANSITION ALTITUDE
11000 FT

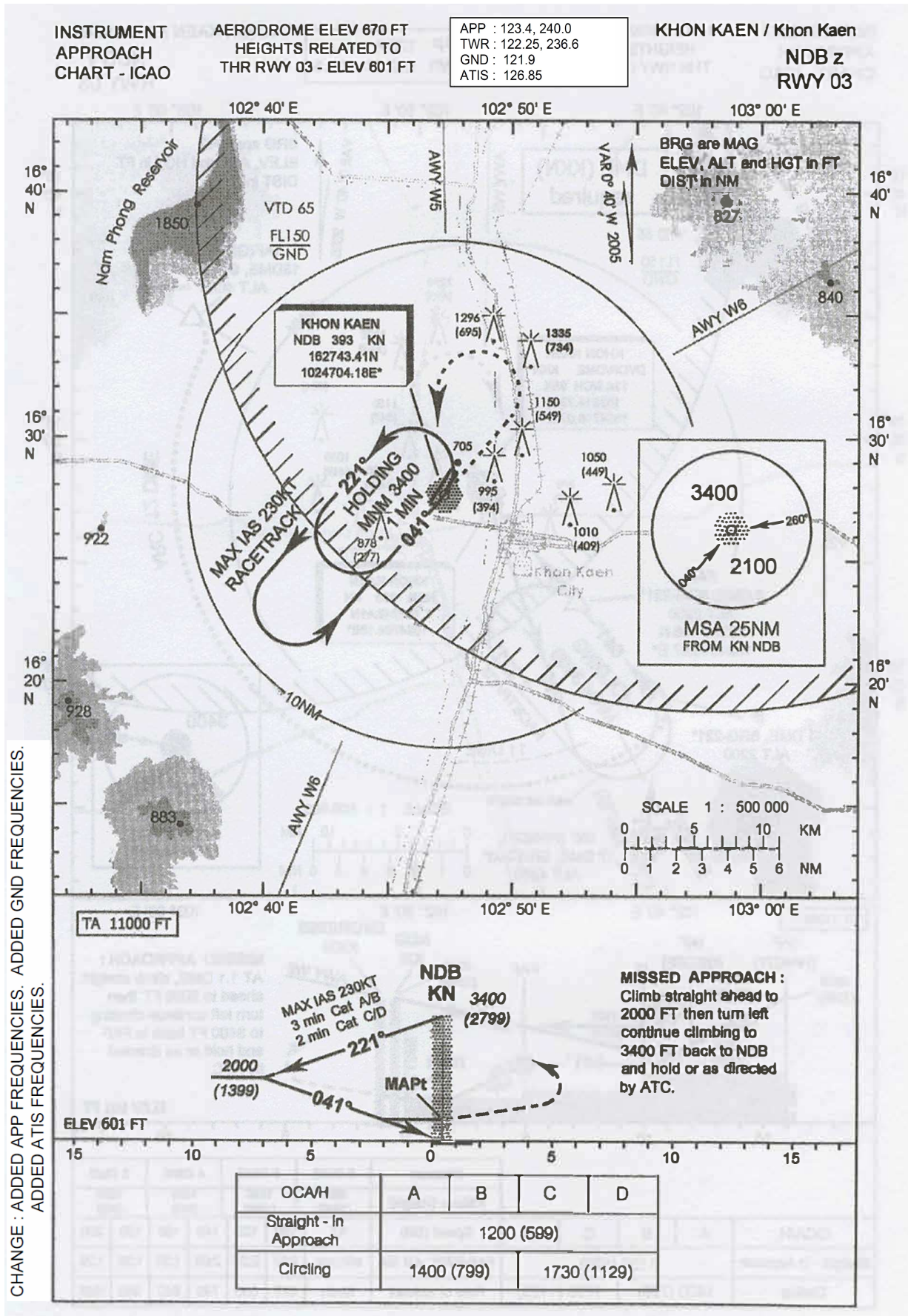


STANDARD DEPARTURE CHART -
INSTRUMENT (SID) - ICAO

KHON KAEN / Khon Kaen (VTUK)
RNAV RWY 21

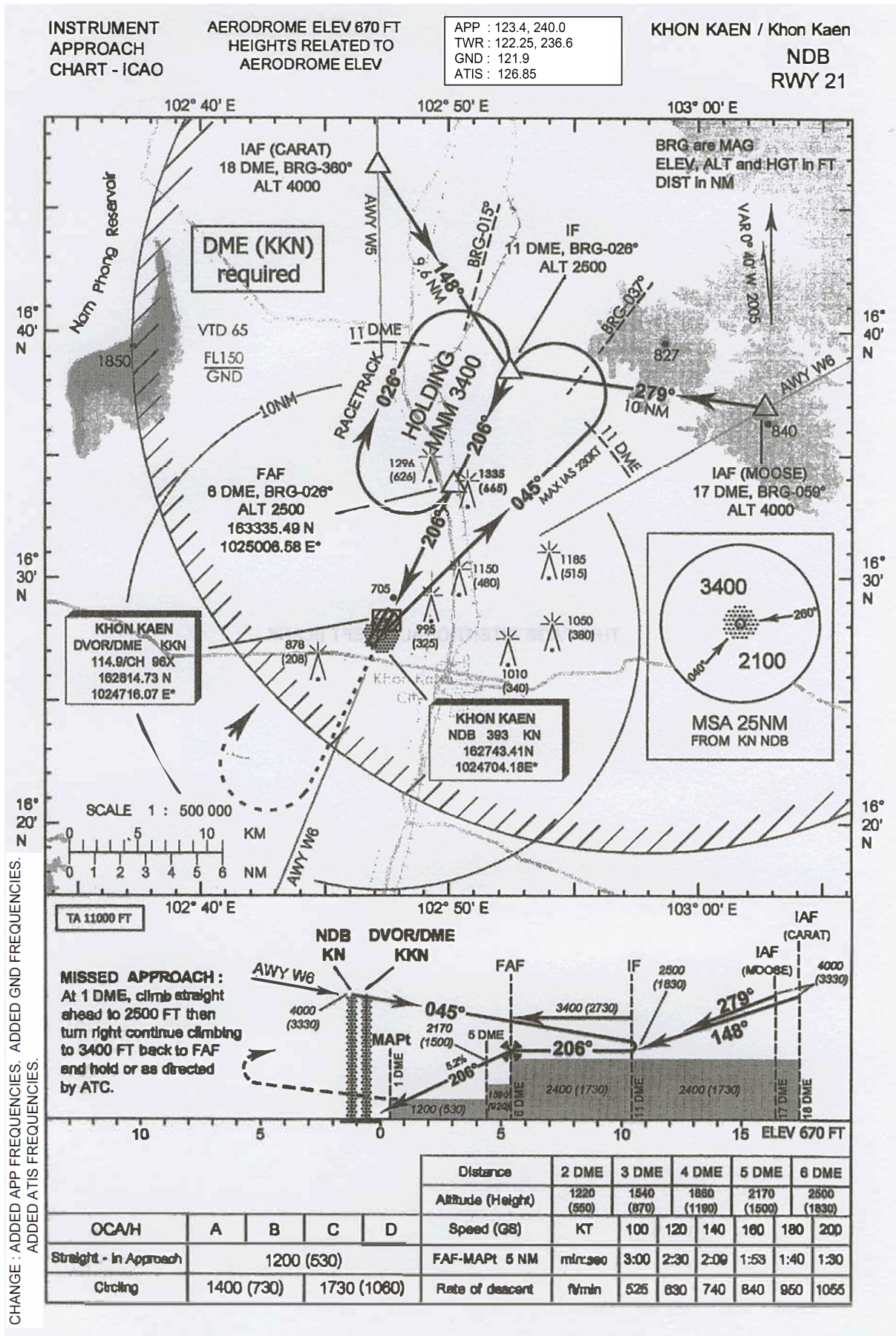
CEDIA 1B
OSAKI 1B

Serial Number	Path Descriptor	Waypoint Identifier	WGS-84 Coordinates		Flyover	Course ° M (° T)	Magnetic Variation	Distance (NM)	Turn Direction	Altitude (FT)	Speed (KT)	VPA/TCH	Navigation Specification
			Latitude	Longitude									
001	-	DER RWY21	16 27 22.26 N	102 46 36.04 E	-	-	0.88	-	-	-	-	-	B-RNP1
002	CF	TALLY	16 23 35.48 N	102 44 04.28 E	Y	214*(212.86°)	0.88	4.5	L	1500+	-	-	B-RNP1
003	DF	CEDIA	16 06 36.25 N	102 34 05.74 E	-	-	0.88	-	-	-	-	-	B-RNP1
004	DF	OSAKI	16 04 58.85 N	102 37 30.21 E	-	-	0.88	-	-	-	-	-	B-RNP1



CHANGE : ADDED APP FREQUENCIES. ADDED GND FREQUENCIES.
ADDED ATIS FREQUENCIES.

INTENTIONALLY BLANK



INTENTIONALLY BLANK

KHON KAEN / Khon Kaen (VTUK)

VOR y RWY 03

FIX/POINT		COORDINATES	
(IAF) VOR	KKN	16 28 14.73 N	102 47 16.07 E
(IF) NISTA	R-213 / 13.0D KKN	16 17 19.75 N	102 39 53.52 E
(FAF)	R-213 / 6.0D KKN	16 23 12.05 N	102 43 51.30 E
(MAPt)	R-213 / 1.1D KKN	16 27 19.24 N	102 46 38.52 E

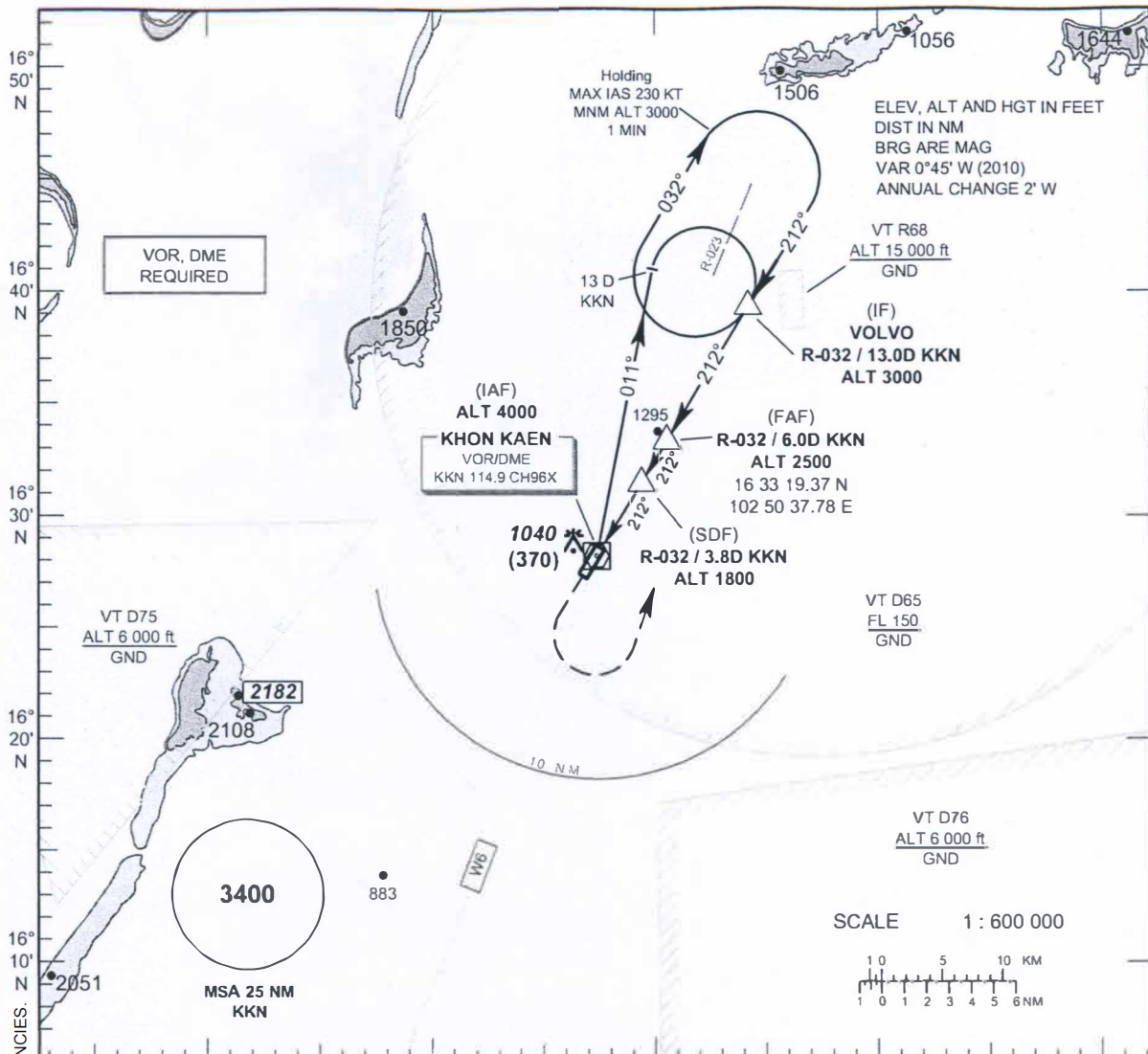
INSTRUMENT
APPROACH
CHART - ICAO

AERODROME ELEV 670 FT
HEIGHTS RELATED TO
AERODROME ELEV

APP : 123.4, 240.0
TWR : 122.25, 236.6
GND : 121.9
ATIS : 126.85

KHON KAEN / Khon Kaen (VTUK)

VOR y RWY 21



MISSED APPROACH :

No turn before MAPt.
Climb straight ahead to 1500 (830) FT then turn left to intercept R-032 KKN VOR then proceed to IF at 3000 (2330) FT and hold or as directed by ATC.

	(VOR/DME)	(IAF) (MAPt)	(SDF)	(FAF)	(IF) VOLVO		
	1070 (400)	4000 (3330)	1800 (1130)	2500 (1830)	3000 (2330)		
	1070	1070	1600	1900	3000		
			5.2% (3°)				
			011°	212°			
					TA 11000		
					ELEV 670 FT (THR RWY 21)		
	DME FM VOR/DME	0	0.4	1.5	3.8	6.0	13.0
	NM FM THR 21	0	1.1	3.4	5.6	12.6	

OCA/H	A	B	C	D	Distance to KKN	1.5 D	2 D	3 D	4 D	5 D	FAF	
Straight-in Approach	1070 (400)				Altitude (Height)	1070 (400)	1225 (555)	1540 (870)	1860 (1190)	2170 (1500)	2500 (1830)	
					Ground speed (GS)	Knot	100	120	140	160	180	200
Circling (OCH AAL)	1600 (930)				Rate of descent	(ft/min)	530	630	740	845	950	1055

CHANGE : ADDED GND FREQUENCIES. ADDED ATIS FREQUENCIES.

KHON KAEN / Khon Kaen (VTUK)

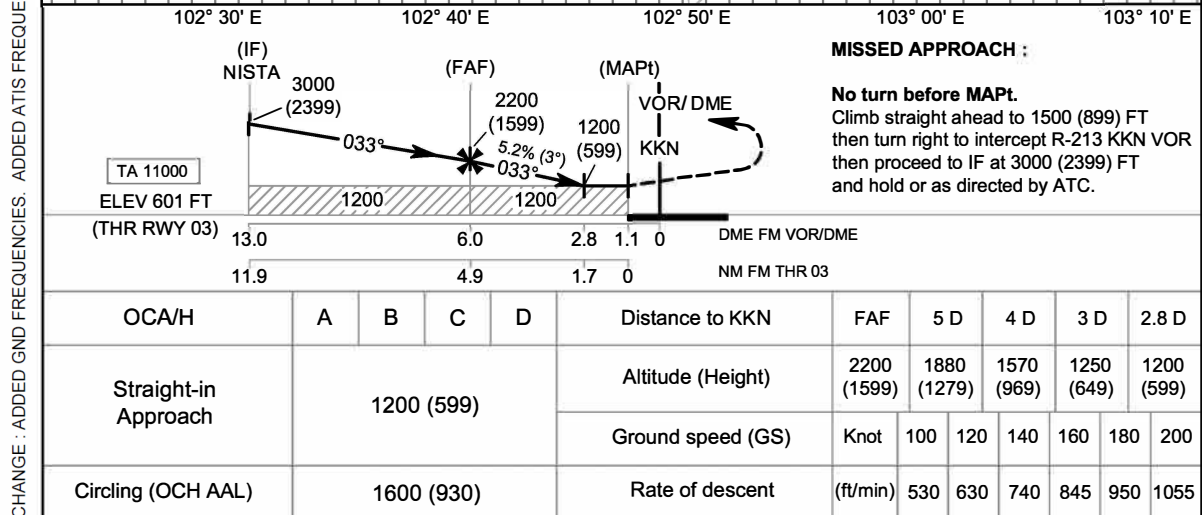
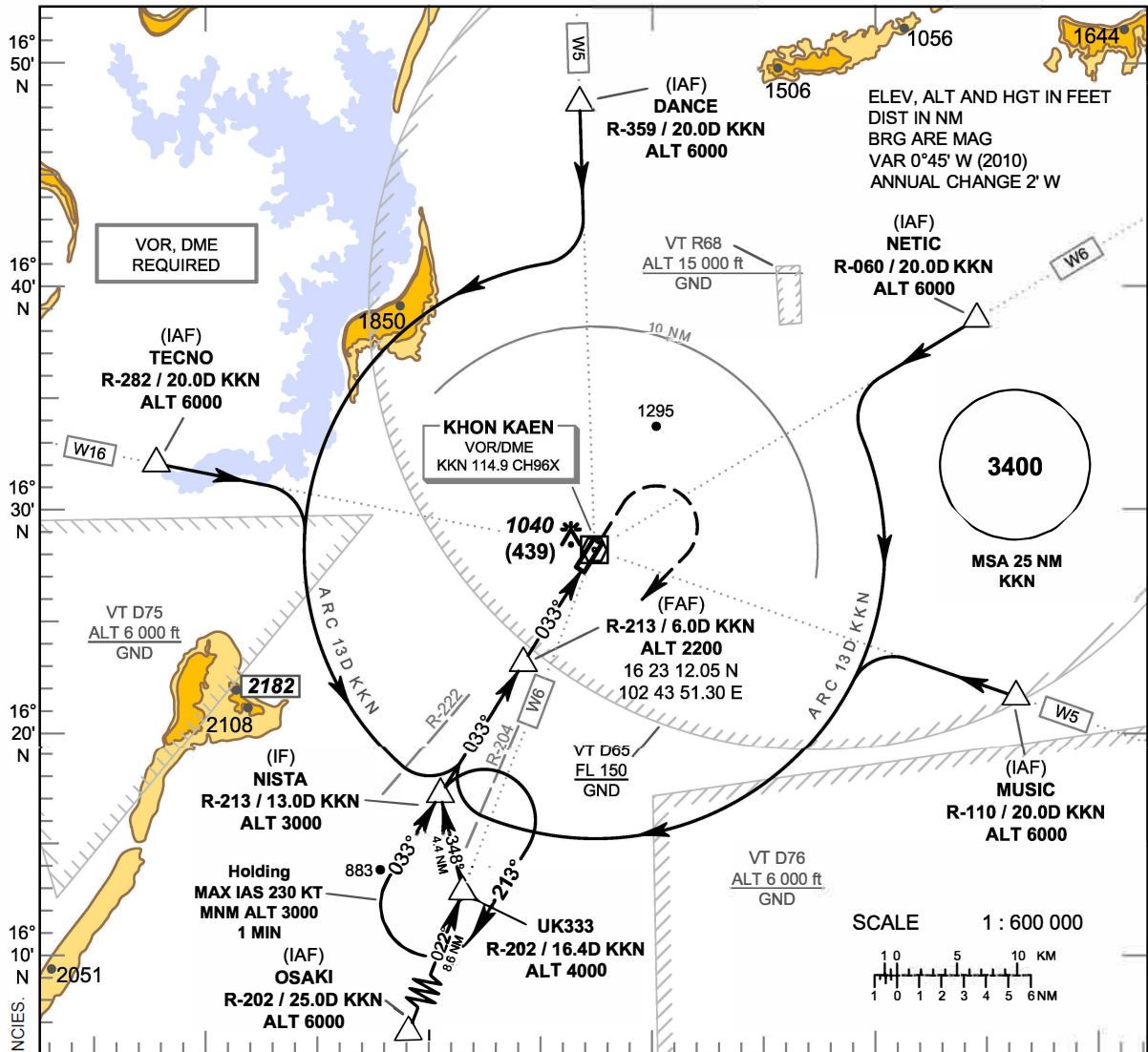
VOR y RWY 21

FIX/POINT		COORDINATES	
(IAF) VOR	KKN	16 28 14.73 N	102 47 16.07 E
(IF) VOLVO	R-032 / 13.0D KKN	16 39 15.19 N	102 54 33.28 E
(FAF)	R-032 / 6.0D KKN	16 33 19.37 N	102 50 37.78 E
(SDF)	R-032 / 3.8D KKN	16 31 27.68 N	102 49 23.80 E
(MAPt)	R-032 / 0.4D KKN	16 28 35.04 N	102 47 29.51 E

INSTUMENT APPROACH CHART - ICAO
AERODROME ELEV 670 FT
HEIGHTS RELATED TO THR RWY 03 - ELEV 601 FT

APP : 123.4, 240.0
TWR : 122.25, 236.6
GND : 121.9
ATIS : 126.85

KHON KAEN / Khon Kaen (VTUK)
VOR z RWY 03



KHON KAEN / Khon Kaen (VTUK)**VOR z RWY 03**

FIX/POINT		COORDINATES	
(IAF) DANCE	R-359 / 20.0D KKN	16 48 18.18 N	102 46 59.27 E
(IAF) NETIC	R-060 / 20.0D KKN	16 38 15.82 N	103 05 17.32 E
(IAF) MUSIC	R-110 / 20.0D KKN	16 21 17.06 N	103 06 45.17 E
(IAF) OSAKI	R-202 / 25.0D KKN	16 04 58.85 N	102 37 30.21 E
(IAF) TECNO	R-282 / 20.0D KKN	16 32 28.35 N	102 26 56.54 E
UK333	R-202 / 16.4D KKN	16 13 01.40 N	102 40 52.07 E
(IF) NISTA	R-213 / 13.0D KKN	16 17 19.75 N	102 39 53.52 E
(FAF)	R-213 / 6.0D KKN	16 23 12.05 N	102 43 51.30 E
(MAPt)	R-213 / 1.1D KKN	16 27 19.24 N	102 46 38.52 E

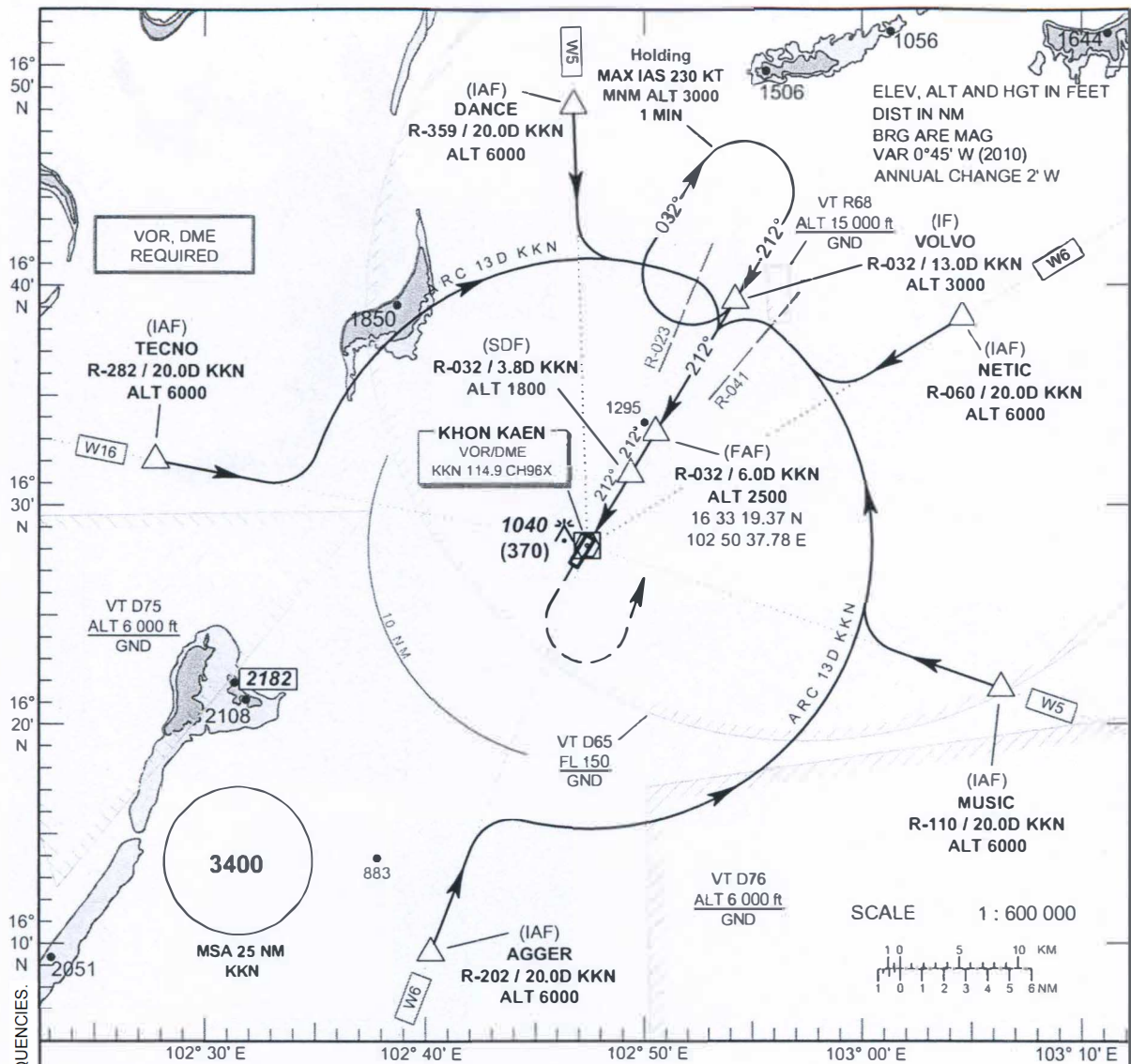
INSTUMENT
APPROACH
CHART - ICAO

AERODROME ELEV 670 FT
HEIGHTS RELATED TO
AERODROME ELEV

APP : 123.4, 240.0
TWR : 122.25, 236.6
GND : 121.9
ATIS : 126.85

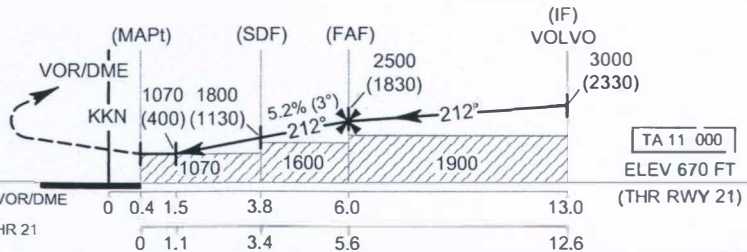
KHON KAEN / Khon Kaen (VTUK)

VOR z RWY 21



MISSED APPROACH :

No turn before MAPt.
Climb straight ahead to 1500 (830) FT then turn left to intercept R-032 KKN VOR then proceed to IF at 3000 (2330) FT and hold or as directed by ATC.



OCA/H	A B C D				Distance to KKN	1.5 D	2 D	3 D	4 D	5 D	FAF	
						Altitude (Height)	Knot	ft/min				
Straight-in Approach	1070 (400)				1070 (400)	100	530	1225 (555)	1540 (870)	1860 (1190)	2170 (1500)	2500 (1830)
					Ground speed (GS)	120	630	140	160	180	200	
Circling (OCH AAL)	1600 (930)				Rate of descent	530	630	740	845	950	1055	

CHANGE : ADDED GND FREQUENCIES. ADDED ATIS FREQUENCIES.

KHON KAEN / Khon Kaen (VTUK)

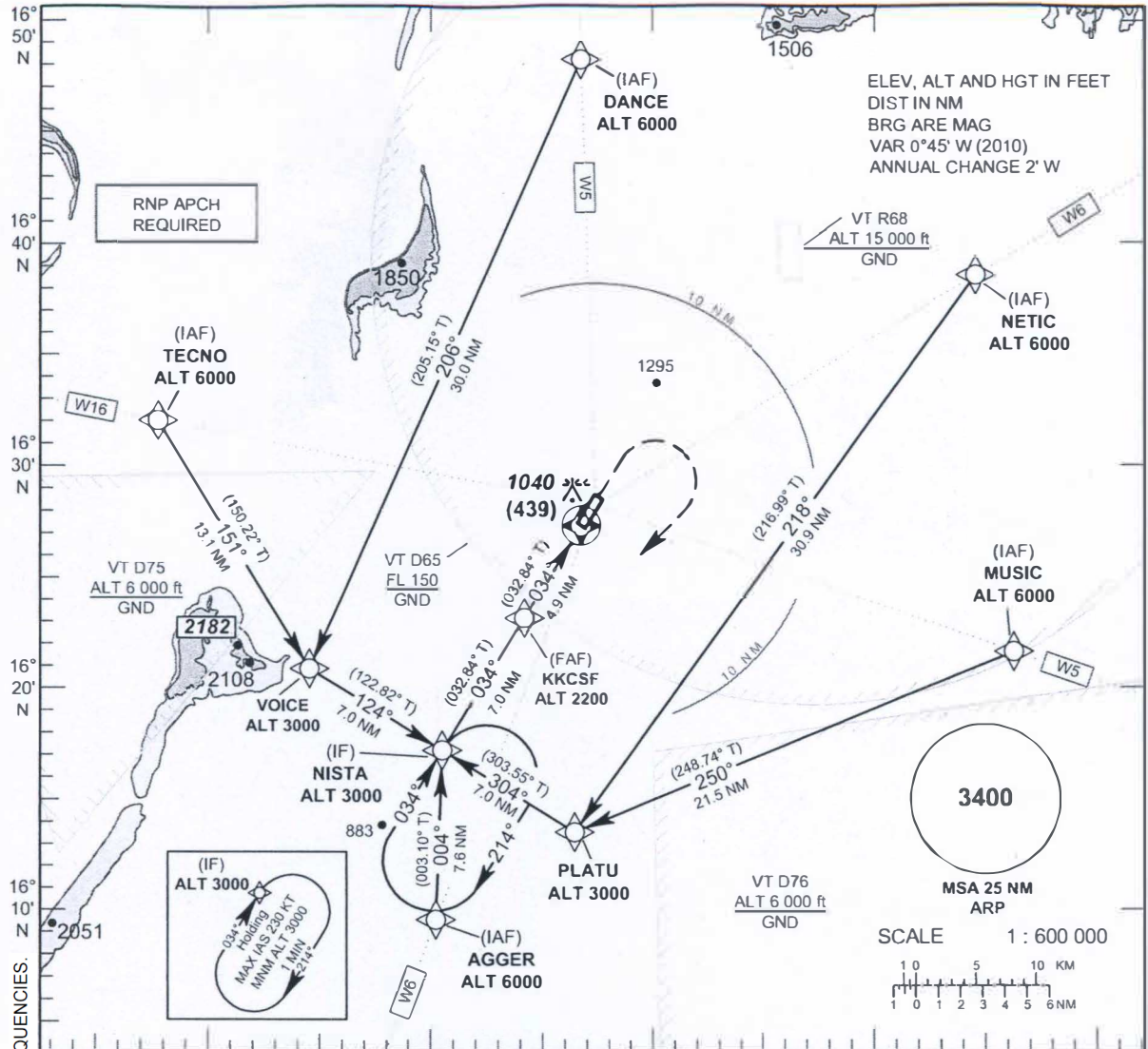
VOR z RWY 21

FIX/POINT		COORDINATES	
(IAF) DANCE	R-359 / 20.0D KKN	16 48 18.18 N	102 46 59.27 E
(IAF) NETIC	R-060 / 20.0D KKN	16 38 15.82 N	103 05 17.32 E
(IAF) MUSIC	R-110 / 20.0D KKN	16 21 17.06 N	103 06 45.17 E
(IAF) AGGER	R-202 / 20.0D KKN	16 09 40.73 N	102 39 27.78 E
(IAF) TECNO	R-282 / 20.0D KKN	16 32 28.35 N	102 26 56.54 E
(IF) VOLVO	R-032 / 13.0D KKN	16 39 15.19 N	102 54 33.28 E
(FAF)	R-032 / 6.0D KKN	16 33 19.37 N	102 50 37.78 E
(SDF)	R-032 / 3.8D KKN	16 31 27.68 N	102 49 23.80 E
(MAPt)	R-032 / 0.4D KKN	16 28 35.04 N	102 47 29.51 E

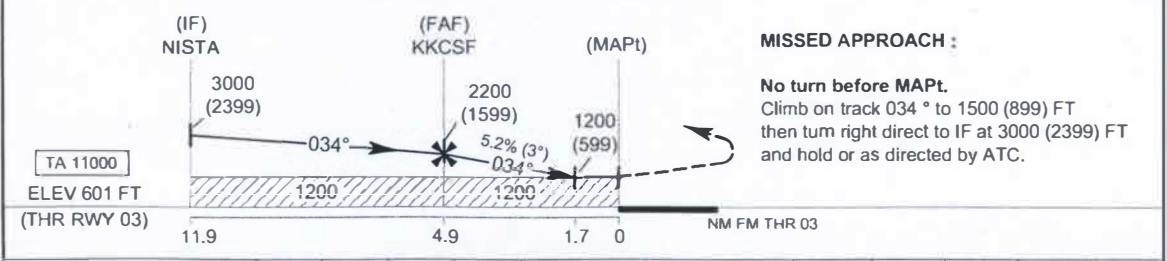
INSTUMENT APPROACH CHART - ICAO
AERODROME ELEV 670 FT
HEIGHTS RELATED TO THR RWY 03 - ELEV 601 FT

APP : 123.4, 240.0
TWR : 122.25, 236.6
GND : 121.9
ATIS : 126.85

KHON KAEN / Khon Kaen (VTUK)
RNAV (GNSS) RWY 03



CHANGE : ADDED GND FREQUENCIES. ADDED ATIS FREQUENCIES.



OCA/H	A	B	C	D	NM to THR 03	FAF	4 NM	3 NM	2 NM	1.7 NM		
LNAV	1200 (599)				Altitude (Height)	2200 (1599)	1915 (1314)	1600 (999)	1280 (679)	1200 (599)		
					Ground speed (GS)	Knot	100	120	140	160	180	200
Circling (OCH AAL)	1600 (930)				Rate of descent	(ft/min)	530	630	740	845	950	1055

KHON KAEN / Khon Kaen (VTUK)

RNAV (GNSS) RWY03

Serial Number	Path Descriptor	Waypoint Identifier	WGS-84 Coordinates		Flyover	Course °M (°T)	Magnetic Variation	Distance (NM)	Turn Direction	Altitude (FT)	Speed (KT)	VPA/TCH	Navigation Specification
			Latitude	Longitude									
001	IF	DANCE (IAF)	16 48 18.18 N	102 46 59.27 E	-	206(205.15°)	0.88	30.0	-	6000	-	-	RNP APCH
002	IF	TECNO (IAF)	16 32 28.35 N	102 26 56.54 E	-	151(150.22°)	0.88	13.1	-	6000	-	-	RNP APCH
003	TF	VOICE	16 21 01.54 N	102 33 43.58 E	-	124(122.82°)	0.88	7.0	L	3000	-	-	RNP APCH
004	IF	NETIC (IAF)	16 38 15.82 N	103 05 17.32 E	-	218(216.99°)	0.88	30.9	-	6000	-	-	RNP APCH
005	IF	MUSIC (IAF)	16 21 17.06 N	103 06 45.17 E	-	250(248.74°)	0.88	21.5	-	6000	-	-	RNP APCH
006	TF	PLATU	16 13 26.92 N	102 45 57.20 E	-	304(303.55°)	0.88	7.0	R	3000	-	-	RNP APCH
007	IF	AGGER (IAF)	16 09 40.73 N	102 39 27.78 E	-	004(003.10°)	0.88	7.6	-	6000	-	-	RNP APCH
008	TF	NISTA (IF)	16 17 19.75 N	102 39 53.52 E	-	034(032.84°)	0.88	7.0	L, R	3000	-	-	RNP APCH
009	TF	KKCSF (FAF)	16 23 14.20 N	102 43 50.21 E	-	034(032.84°)	0.88	4.9	-	2200	-	-	RNP APCH
010	-	MAPt (THR03)	16 27 22.26 N	102 46 36.04 E	Y	034(032.84°)	0.88	-	-	1200	-	-	RNP APCH
011	CA	-	-	-	-	034(032.84°)	0.88	-	R	1500	-	-	RNP APCH
012	DF	NISTA (IF)	16 17 19.75 N	102 39 53.52 E	-	-	0.88	-	-	3000	-	-	RNP APCH
013	HM	NISTA (IF)	16 17 19.75 N	102 39 53.52 E	-	034(032.84°)	0.88	-	R	3000	-	-	RNP APCH

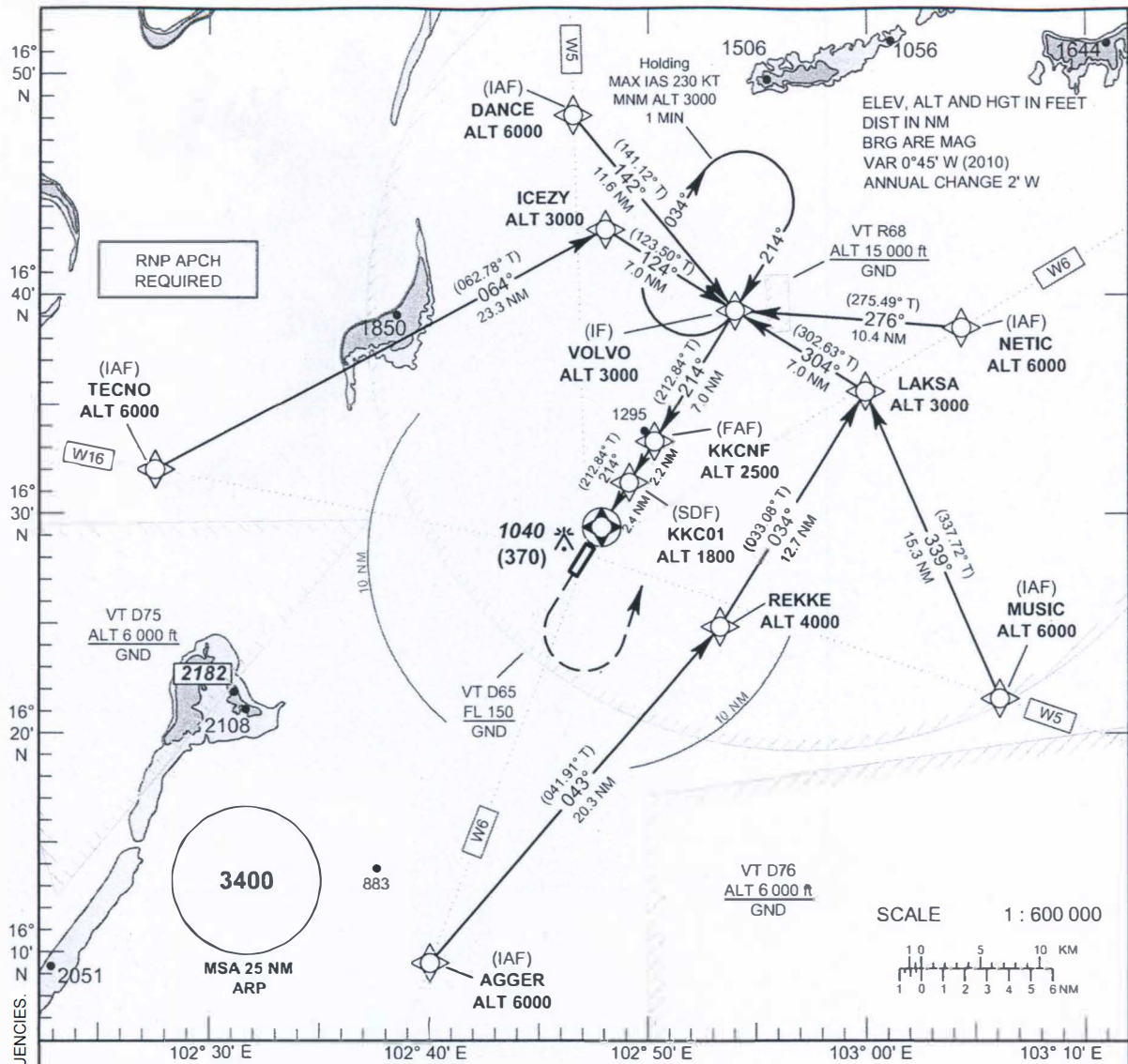
INSTUMENT
APPROACH
CHART - ICAO

AERODROME ELEV 670 FT
HEIGHTS RELATED TO
AERODROME ELEV

APP : 123.4, 240.0
TWR : 122.25, 236.6
GND : 121.9
ATIS : 126.85

KHON KAEN / Khon Kaen (VTUK)

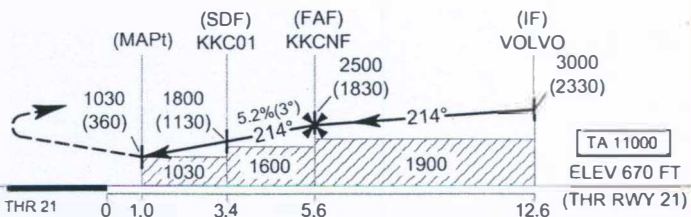
RNAV (GNSS) RWY 21



MISSED APPROACH :

No turn before MAPt.

Climb on track 214° to 1500 (830) FT then turn left direct to IF at 3000 (2330) FT and hold or as directed by ATC.



OCA/H	A	B	C	D	NM to THR 21	1 NM	2 NM	3 NM	4 NM	5 NM	FAF	
LNAV	1030 (360)				Altitude (Height)	1030 (360)	1350 (680)	1670 (1000)	1980 (1310)	2300 (1630)	2500 (1830)	
					Ground speed (GS)	Knot	100	120	140	160	180	200
Circling (OCH AAL)	1600 (930)				Rate of descent	(ft/min)	530	630	740	845	950	1055

KHON KAEN / Khon Kaen (VTUK)

RNAV (GNSS) RWY21

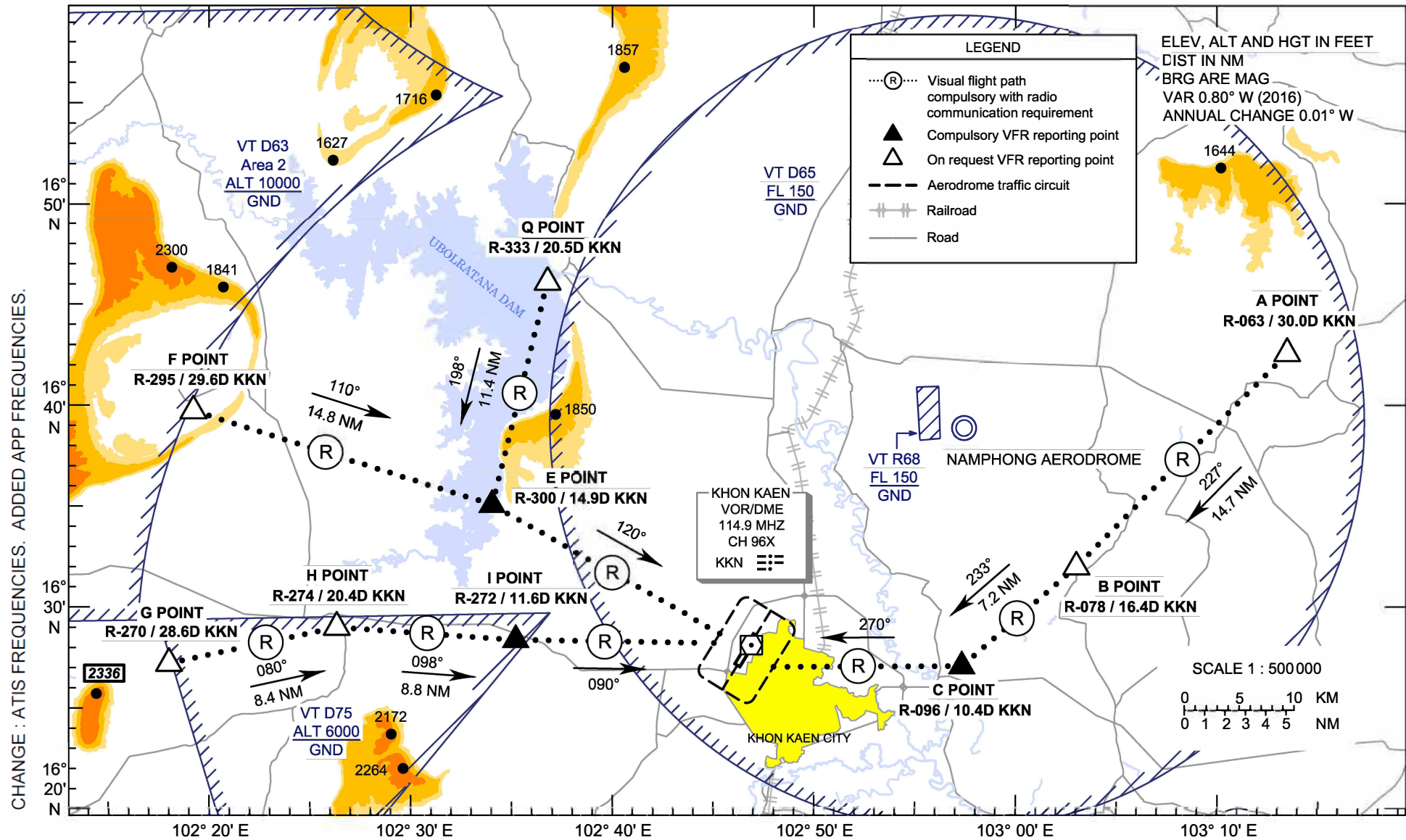
Serial Number	Path Descriptor	Waypoint Identifier	WGS-84 Coordinates		Flyover	Course °M (°T)	Magnetic Variation	Distance (NM)	Turn Direction	Altitude (FT)	Speed (KT)	VPA/TCH	Navigation Specification
			Latitude	Longitude									
001	IF	DANCE (IAF)	16 48 18.18 N	102 46 59.27 E	-	142(14 1.12°)	0.88	11.6	-	6000	-	-	RNP APCH
002	IF	NETIC (IAF)	16 38 15.82 N	103 05 17.32 E	-	276(27 5.49°)	0.88	10.4	-	6000	-	-	RNP APCH
003	IF	TECNO (IAF)	16 32 28.35 N	102 26 56.54 E	-	064(06 2.78°)	0.88	23.3	-	6000	-	-	RNP APCH
004	TF	ICEZY	16 43 07.87 N	102 48 28.71 E	-	124(123.50°)	0.88	7.0	R	3000	-	-	RNP APCH
005	IF	MUSIC (IAF)	16 21 17.06 N	103 06 45.17 E	-	339(33 7.72°)	0.88	15.3	-	6000	-	-	RNP APCH
006	IF	AGGER (IAF)	16 09 40.73 N	102 39 27.78 E	-	043(04 1.91°)	0.88	20.3	-	6000	-	-	RNP APCH
007	TF	REKKE	16 24 49.12 N	102 53 32.92 E	-	034(033.08°)	0.88	12.7	L	4000	-	-	RNP APCH
008	TF	LAKSA	16 35 27.60 N	103 00 43.66 E	-	304(302.63°)	0.88	7.0	L	3000	-	-	RNP APCH
009	TF	VOLVO (IF)	16 39 15.19 N	102 54 33.28 E	-	214(212.84°)	0.88	7.0	L, R	3000	-	-	RNP APCH
010	TF	KKCNF (FAF)	16 33 20.93 N	102 50 35.99 E	-	214(21 2.84°)	0.88	2.2	-	2500	-	-	RNP APCH
011	TF	KKC01 (SDF)	16 31 29.57 N	102 49 21.46 E	-	214(21 2.84°)	0.88	2.4	-	1800	-	-	RNP APCH
012	-	MAPt (1.0 NM FM THR21)	16 29 28.08 N	102 48 00.19 E	Y	214(212.84°)	0.88	-	-	1030	-	-	RNP APCH
013	CA	-	-	-	-	214(212.84°)	0.88	-	L	1500	-	-	RNP APCH
014	DF	VOLVO (IF)	16 39 15.19 N	102 54 33.28 E	-	-	0.88	-	-	3000	-	-	RNP APCH
015	HM	VOLVO (IF)	16 39 15.19 N	102 54 33.28 E	-	214(212.84°)	0.88	-	R	3000	-	-	RNP APCH

**VFR ENTRY
PROCEDURE
CHART**

**AERODROME ELEV 670 FT
HEIGHTS RELATED TO
AERODROME ELEV**

APP : 123.4, 240.0
TWR : 122.25, 236.6
GND : 121.9
ATIS : 126.85

**KHON KAEN /
Khon Kaen (VTUK)
RWY03/21
(NORTH)**



**VFR ENTRY
PROCEDURE
CHART**

**AERODROME ELEV 670 FT
HEIGHTS RELATED TO
AERODROME ELEV**

**KHON KAEN /
Khon Kaen (VTUK)
RWY03/21
(NORTH)**

ARR-RWY03/21 (From North)

Inbound via Q POINT then heading 198° to E POINT and heading 120° to over aerodrome. Join aerodrome traffic circuit when directed by ATC.

ARR-RWY03/21 (From North-West)

Inbound via F POINT then heading 110° to E POINT and heading 120° to over aerodrome. Join aerodrome traffic circuit when directed by ATC.

ARR-RWY03/21 (From West)

Inbound via G POINT then heading 080° to H POINT, heading 098° to I POINT, and heading 090° to over aerodrome. Join aerodrome traffic circuit when directed by ATC.

ARR-RWY03/21 (From North-East)

Inbound via A POINT with recommended altitude at or above 2000 ft then heading 227° to B POINT, heading 233° to C POINT, and heading 270° to over aerodrome. Join aerodrome traffic circuit when directed by ATC.

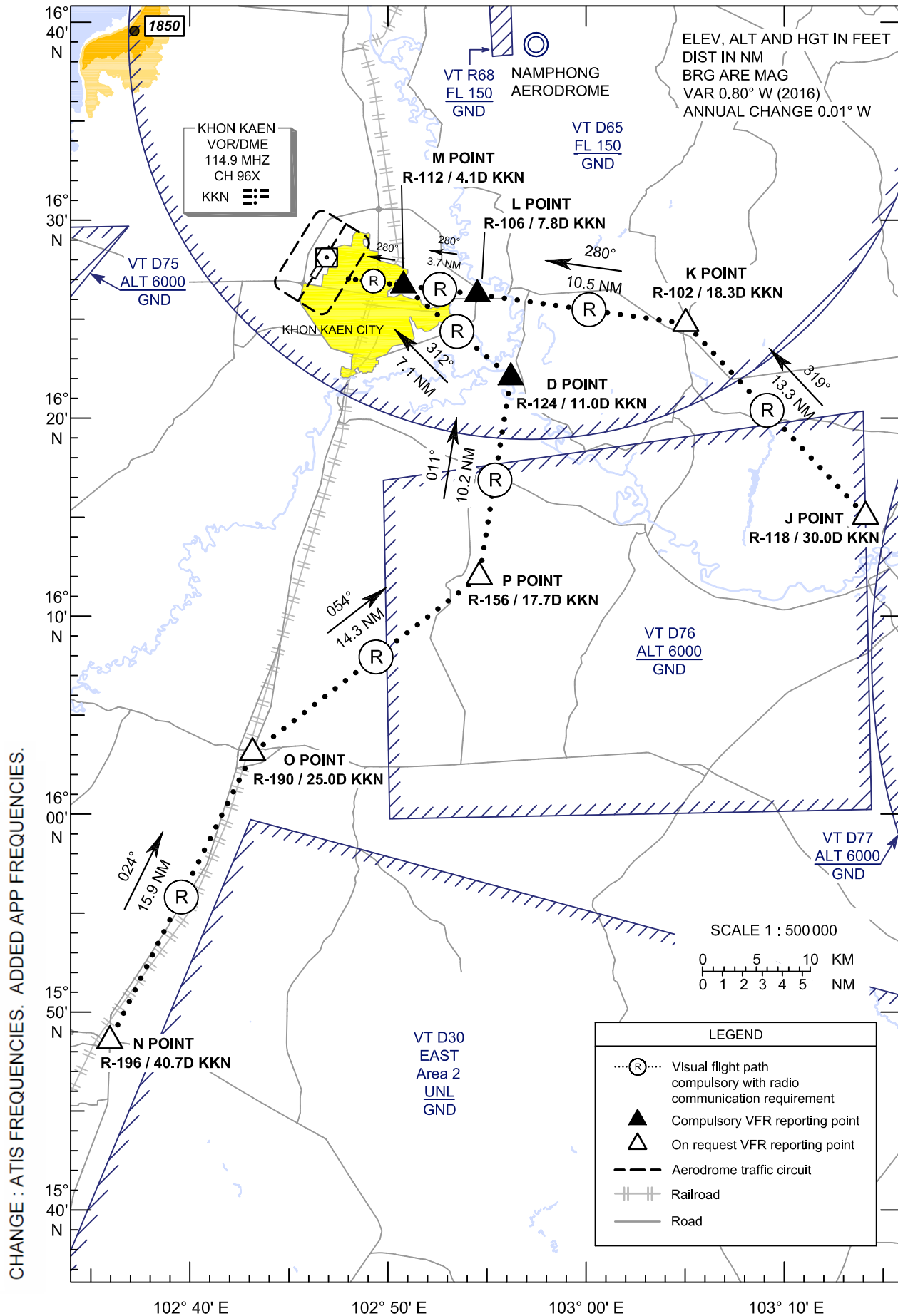
Reporting points	Landmark	Radial / DME from KKN VOR	Coordinates	
			Latitude	Longitude
"A" or ALPHA Point	Ban Nong Chum Sang Temple	R-063 / 30.0D	16° 42' 06.00" N	103° 14' 58.00" E
"B" or BRAVO Point	Sam Sung Police Station	R-078 / 16.4D	16° 31' 47.02" N	103° 03' 58.55" E
"C" or CHARLIE Point	White Pagoda	R-096 / 10.4D	16° 27' 19.00" N	102° 58' 03.40" E
"E" or ECHO Point	Sa Wang Cherng Khao Temple	R-300 / 14.9D	16° 35' 27.07" N	102° 33' 41.30" E
"F" or FOXTROT Point	Phu Wiang Hill	R-295 / 29.6D	16° 40' 20.37" N	102° 19' 07.91" E
"G" or GOLF Point	Ei San Temple (Road Intersection)	R-270 / 28.6D	16° 27' 51.90" N	102° 17' 29.80" E
"H" or HOTEL Point	Nhong Reua (Road Intersection)	R-274 / 20.4D	16° 29' 29.60" N	102° 26' 06.20" E
"I" or INDIA Point	Khon Kaen 4 Power Plant	R-272 / 11.6D	16° 28' 26.70" N	102° 35' 12.40" E
"Q" or QUEBEC Point	Au Bon Rat Dam	R-333 / 20.5D	16° 46' 20.20" N	102° 37' 11.90" E
KHON KAEN VOR/DME (KKN)	KHON KAEN VOR/DME Station	-	16° 28' 14.73" N	102° 47' 16.07" E

CHANGE: NEW CHART.

VFR ENTRY PROCEDURE CHART
AERODROME ELEV 670 FT
HEIGHTS RELATED TO AERODROME ELEV

APP : 123.4, 240.0
TWR : 122.25, 236.6
GND : 121.9
ATIS : 126.85

**KHON KAEN /
Khon Kaen (VTUK)
RWY03/21
(SOUTH)**



**VFR ENTRY
PROCEDURE
CHART**

**AERODROME ELEV 670 FT
HEIGHTS RELATED TO
AERODROME ELEV**

**KHON KAEN /
Khon Kaen (VTUK)
RWY03/21
(SOUTH)**

ARR-RWY03/21 (From East)

Inbound via J POINT then heading 319° to K POINT, heading 280° to L POINT, heading 280° to M POINT, and heading 280° to over aerodrome. Join aerodrome traffic circuit when directed by ATC.

ARR-RWY03/21 (From South)

Inbound via N POINT then heading 024° to O POINT, heading 054° to P POINT, heading 011° to D POINT, heading 312° to M POINT, and heading 280° to over aerodrome. Join aerodrome traffic circuit when directed by ATC.

Reporting points	Landmark	Radial / DME from KKN VOR	Coordinates	
			Latitude	Longitude
"D" or DELTA Point	Wang Yang Weir	R-124 / 11.0D	16° 22' 07.00" N	102° 56' 50.60" E
"J" or JULIETT Point	Ma Ha Sa Ra Kham University	R-118 / 30.0D	16° 14' 33.17" N	103° 15' 03.57" E
"K" or KILO Point	Chiang Yeun	R-102 / 18.3D	16° 24' 35.30" N	103° 05' 53.00" E
"L" or LIMA Point	Bridge	R-106 / 7.8D	16° 26' 13.03" N	102° 55' 04.32" E
"M" or MIKE Point	Beung Thung Sang Park	R-112 / 4.1D	16° 26' 47.42" N	102° 51' 15.09" E
"N" or NOVEMBER Point	Mueang Pol	R-196 / 40.7D	15° 48' 44.90" N	102° 36' 26.90" E
"O" or OSCAR Point	Ban Phai (Road Intersection)	R-190 / 25.0D	16° 03' 27.30" N	102° 42' 57.50" E
"P" or PAPA Point	Khon Sak Creek	R-156 / 17.7D	16° 12' 04.70" N	102° 54' 53.80" E
KHON KAEN VOR/DME (KKN)	KHON KAEN VOR/DME Station	-	16° 28' 14.73" N	102° 47' 16.07" E

CHANGE: NEW CHART.

**VFR EXIT
PROCEDURE
CHART**

AERODROME ELEV 670 FT
HEIGHTS RELATED TO
AERODROME ELEV

**KHON KAEN /
Khon Kaen (VTUK)
RWY03
(NORTH)**

DEP-RWY03 (North)

After departure climb to altitude 500 ft then heading 358° to T POINT.

DEP-RWY03 (North)

After departure turn left proceed westbound (heading 300°) until 2.5 DME then heading 290° to E POINT, and heading 018° to Q POINT.

DEP-RWY03 (North-East)

After departure turn right proceed eastbound (heading 120°) until 2.5 DME then heading 095° to U POINT, heading 061° to B POINT, and heading 047° to A POINT with recommended altitude at or above 2000 ft.

DEP-RWY03 (North-East)

After departure climb to altitude 500 ft then heading 065° to S POINT, heading 060° to R POINT, and heading 069° to A POINT with recommended altitude at or above 2000 ft.

DEP-RWY03 (North-West)

After departure turn left proceed westbound (heading 300°) until 2.5 DME then heading 290° to E POINT, and heading 290° to F POINT.

DEP-RWY03 (West)

After departure turn left proceed westbound (heading 300°) until 2.5 DME then heading 265° to H POINT, and heading 260° to G POINT.

Reporting points	Landmark	Radial / DME from KKN VOR	Coordinates	
			Latitude	Longitude
"A" or ALPHA Point	Ban Nong Chum Sang Temple	R-063 / 30.0D	16° 42' 06.00" N	103° 14' 58.00" E
"B" or BRAVO Point	Sam Sung Police Station	R-078 / 16.4D	16° 31' 47.02" N	103° 03' 58.55" E
"E" or ECHO Point	Sa Wang Cherng Khao Temple	R-300 / 14.9D	16° 35' 27.07" N	102° 33' 41.30" E
"F" or FOXTROT Point	Phu Wiang Hill	R-295 / 29.6D	16° 40' 20.37" N	102° 19' 07.91" E
"G" or GOLF Point	Ei San Temple (Road Intersection)	R-270 / 28.6D	16° 27' 51.90" N	102° 17' 29.80" E
"H" or HOTEL Point	Nhong Reua (Road Intersection)	R-274 / 20.4D	16° 29' 29.60" N	102° 26' 06.20" E
"Q" or QUEBEC Point	Au Bon Rat Dam	R-333 / 20.5D	16° 46' 20.20" N	102° 37' 11.90" E
"U" or UNIFORM Point	Pho Tha Ram Temple	R-092 / 9.6D	16° 28' 01.00" N	102° 57' 13.00" E
"R" or ROMEO Point	Nhong Krung Yai Village	R-060 / 19.1D	16° 37' 59.60" N	103° 04' 19.60" E
"S" or SIERRA Point	Phra That Kham Kaen	R-060 / 11.0D	16° 33' 49.00" N	102° 57' 06.00" E
"T" or TANGO Point	Bridge	R-004 / 15.2D	16° 43' 31.00" N	102° 48' 09.00" E
KHON KAEN VOR/DME (KKN)	KHON KAEN VOR/DME Station	-	16° 28' 14.73" N	102° 47' 16.07" E

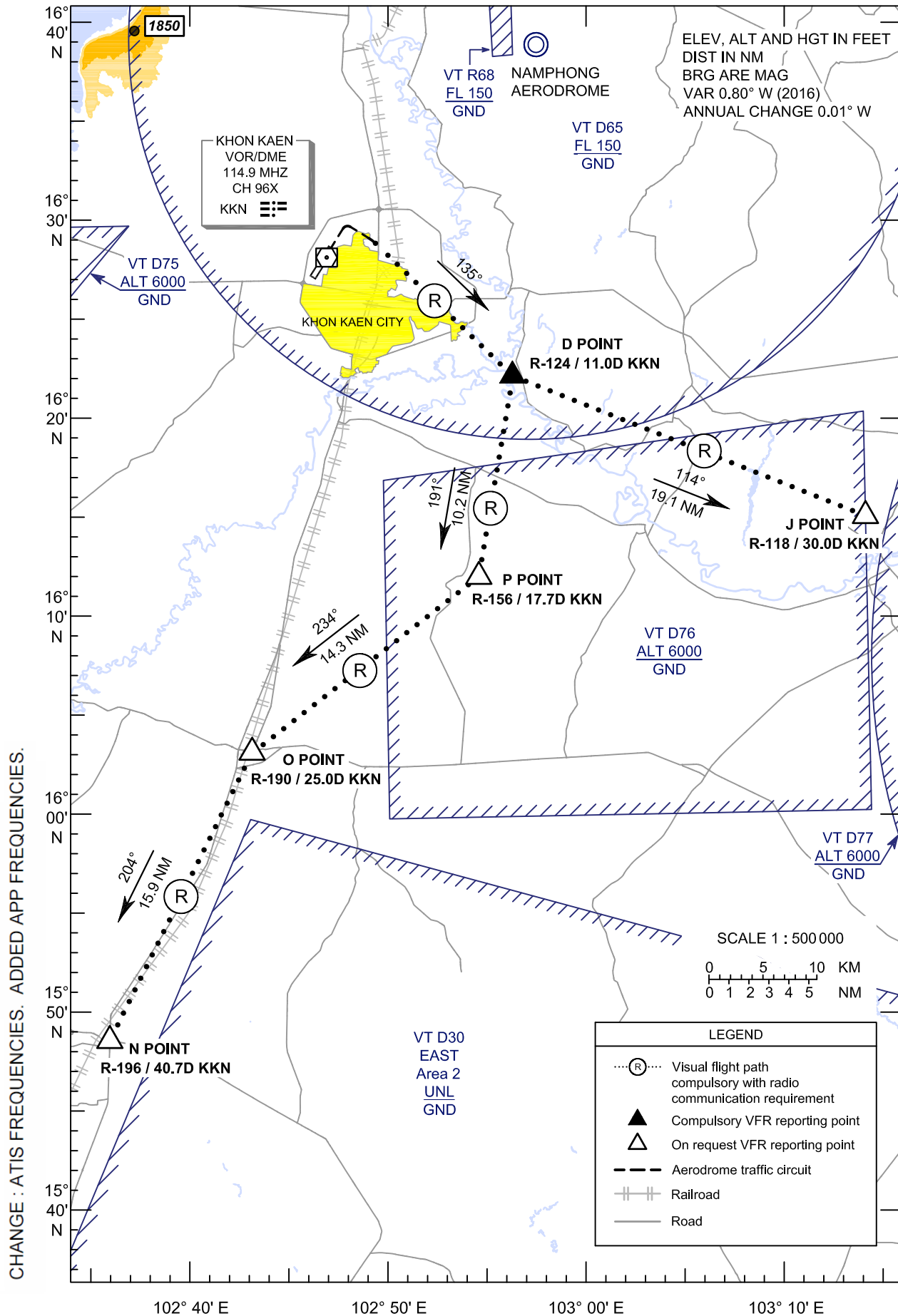
CHANGE: NEW CHART.

VFR EXIT
PROCEDURE
CHART

AERODROME ELEV 670 FT
HEIGHTS RELATED TO
AERODROME ELEV

APP : 123.4, 240.0
TWR : 122.25, 236.6
GND : 121.9
ATIS : 126.85

**KHON KAEN /
Khon Kaen (VTUK)
RWY03
(SOUTH)**



**VFR EXIT
PROCEDURE
CHART**

**AERODROME ELEV 670 FT
HEIGHTS RELATED TO
AERODROME ELEV**

**KHON KAEN /
Khon Kaen (VTUK)
RWY03
(SOUTH)**

DEP-RWY03 (South-East)

After departure turn right proceed eastbound (heading 120°) until 2.5 DME then heading 135° to D POINT, and heading 114° to J POINT.

DEP-RWY03 (South)

After departure turn right proceed eastbound (heading 120°) until 2.5 DME then heading 135° to D POINT, heading 191° to P POINT, heading 234° to O POINT, and heading 204° to N POINT.

Reporting points	Landmark	Radial / DME from KKN VOR	Coordinates	
			Latitude	Longitude
"D" or DELTA Point	Wang Yang Weir	R-124 / 11.0D	16° 22' 07.00" N	102° 56' 50.60" E
"J" or JULIETT Point	Ma Ha Sa Ra Kham University	R-118 / 30.0D	16° 14' 33.17" N	103° 15' 03.57" E
"N" or NOVEMBER Point	Mueang Pol	R-196 / 40.7D	15° 48' 44.90" N	102° 36' 26.90" E
"O" or OSCAR Point	Ban Phai (Road Intersection)	R-190 / 25.0D	16° 03' 27.30" N	102° 42' 57.50" E
"P" or PAPA Point	Khon Sak Creek	R-156 / 17.7D	16° 12' 04.70" N	102° 54' 53.80" E
KHON KAEN VOR/DME (KKN)	KHON KAEN VOR/DME Station	-	16° 28' 14.73" N	102° 47' 16.07" E

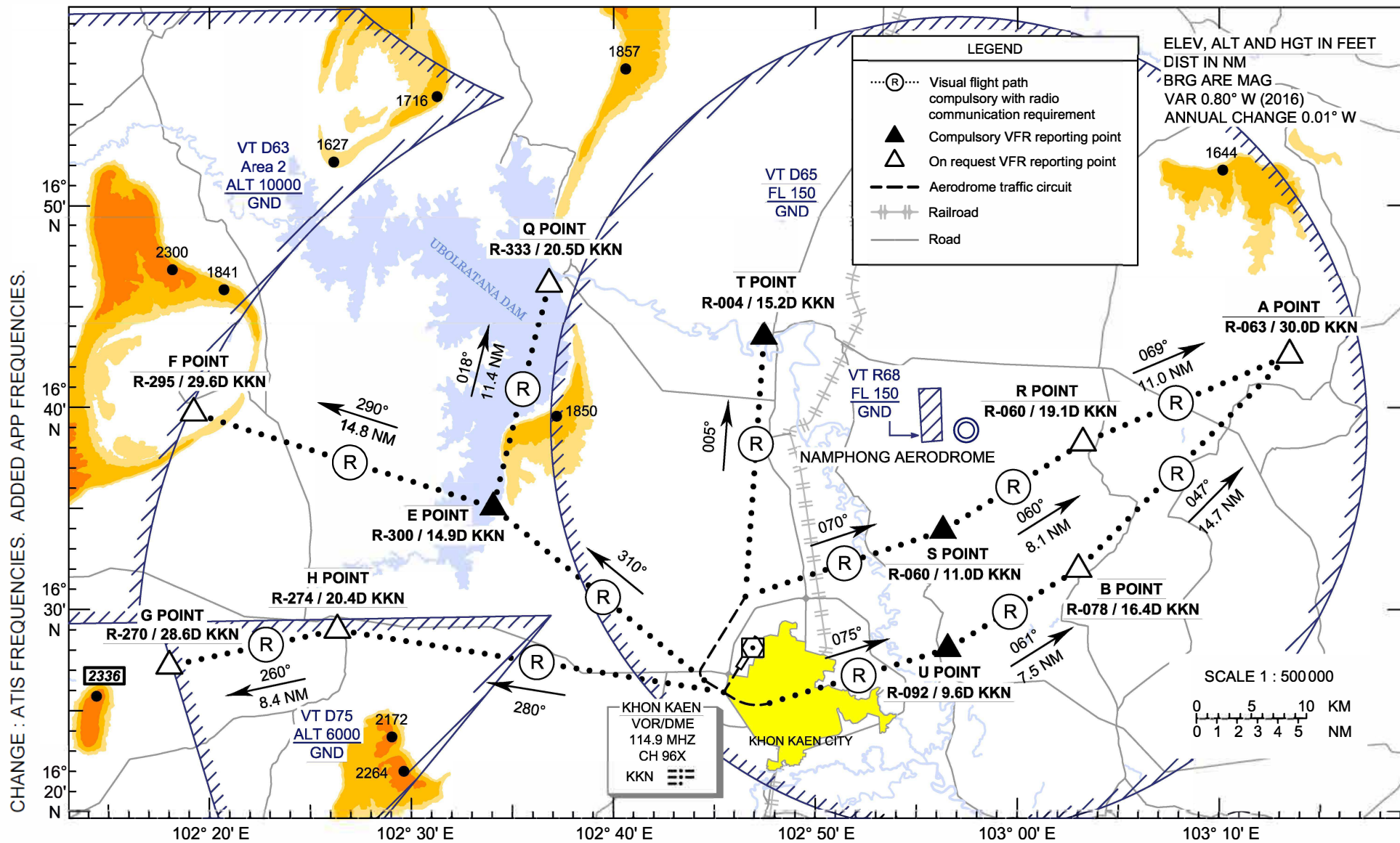
CHANGE: NEW CHART.

**VFR EXIT
PROCEDURE
CHART**

**AERODROME ELEV 670 FT
HEIGHTS RELATED TO
AERODROME ELEV**

APP : 123.4, 240.0
TWR : 122.25, 236.6
GND : 121.9
ATIS : 126.85

**KHON KAEN /
Khon Kaen (VTUK)
RWY21
(NORTH)**



**VFR EXIT
PROCEDURE
CHART**

AERODROME ELEV 670 FT
HEIGHTS RELATED TO
AERODROME ELEV

**KHON KAEN /
Khon Kaen (VTUK)
RWY21
(NORTH)**

DEP-RWY21 (North)

After departure turn right proceed westbound (heading 300°) until 2.5 DME then turn right to join right downwind then heading 005° to T POINT.

DEP-RWY21 (North)

After departure turn right proceed westbound (heading 300°) until 2.5 DME then heading 310° to E POINT, and heading 018° to Q POINT.

DEP-RWY21 (North-East)

After departure turn left proceed eastbound (heading 120°) until 2.5 DME then heading 075° to U POINT, heading 061° to B POINT, and heading 047° to A POINT with recommended altitude at or above 2000 ft.

DEP-RWY21 (North-East)

After departure turn right proceed westbound (heading 300°) until 2.5 DME then turn right to join right downwind then heading 070° to S POINT, heading 060° to R POINT, and heading 069° to A POINT with recommended altitude at or above 2000 ft.

DEP-RWY21 (North-West)

After departure turn right proceed westbound (heading 300°) until 2.5 DME then heading 310° to E POINT, and heading 290° to F POINT.

DEP-RWY21 (West)

After departure climb to altitude 500 ft then heading 280° to H POINT, and heading 260° to G POINT.

Reporting points	Landmark	Radial / DME from KKN VOR	Coordinates	
			Latitude	Longitude
"A" or ALPHA Point	Ban Nong Chum Sang Temple	R-063 / 30.0D	16° 42' 06.00" N	103° 14' 58.00" E
"B" or BRAVO Point	Sam Sung Police Station	R-078 / 16.4D	16° 31' 47.02" N	103° 03' 58.55" E
"E" or ECHO Point	Sa Wang Cherng Khao Temple	R-300 / 14.9D	16° 35' 27.07" N	102° 33' 41.30" E
"F" or FOXTROT Point	Phu Wiang Hill	R-295 / 29.6D	16° 40' 20.37" N	102° 19' 07.91" E
"G" or GOLF Point	Ei San Temple (Road Intersection)	R-270 / 28.6D	16° 27' 51.90" N	102° 17' 29.80" E
"H" or HOTEL Point	Nhong Reua (Road Intersection)	R-274 / 20.4D	16° 29' 29.60" N	102° 26' 06.20" E
"Q" or QUEBEC Point	Au Bon Rat Dam	R-333 / 20.5D	16° 46' 20.20" N	102° 37' 11.90" E
"U" or UNIFORM Point	Pho Tha Ram Temple	R-092 / 9.6D	16° 28' 01.00" N	102° 57' 13.00" E
"R" or ROMEO Point	Nhong Krung Yai Village	R-060 / 19.1D	16° 37' 59.60" N	103° 04' 19.60" E
"S" or SIERRA Point	Phra That Kham Kaen	R-060 / 11.0D	16° 33' 49.00" N	102° 57' 06.00" E
"T" or TANGO Point	Bridge	R-004 / 15.2D	16° 43' 31.00" N	102° 48' 09.00" E
KHON KAEN VOR/DME (KKN)	KHON KAEN VOR/DME Station	-	16° 28' 14.73" N	102° 47' 16.07" E

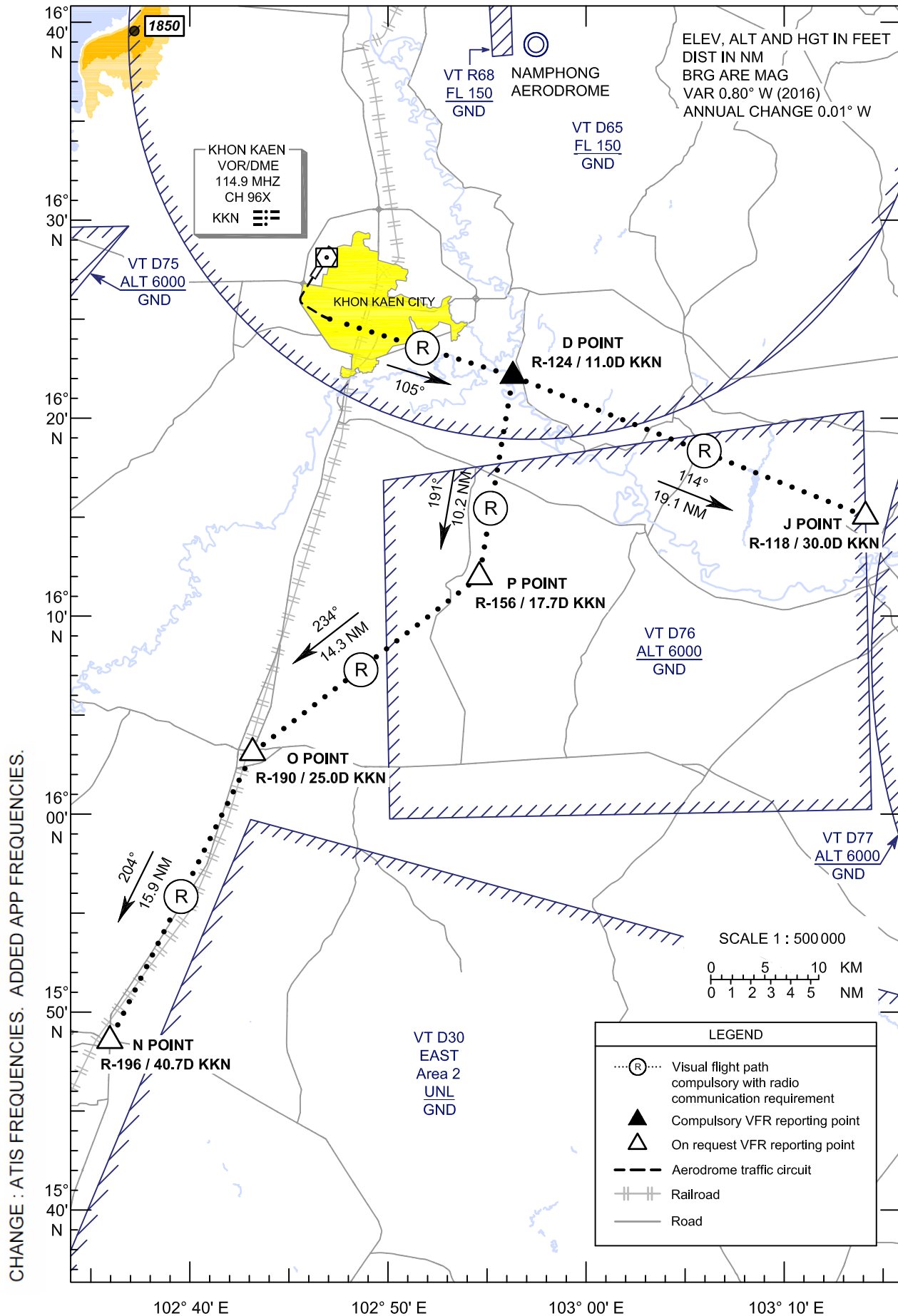
CHANGE: NEW CHART.

VFR EXIT
PROCEDURE
CHART

AERODROME ELEV 670 FT
HEIGHTS RELATED TO
AERODROME ELEV

APP : 123.4, 240.0
TWR : 122.25, 236.6
GND : 121.9
ATIS : 126.85

**KHON KAEN /
Khon Kaen (VTUK)
RWY21
(SOUTH)**



**VFR EXIT
PROCEDURE
CHART**

**AERODROME ELEV 670 FT
HEIGHTS RELATED TO
AERODROME ELEV**

**KHON KAEN /
Khon Kaen (VTUK)
RWY21
(SOUTH)**

DEP-RWY21 (South-East)

After departure turn left proceed eastbound (heading 120°) until 2.5 DME then heading 105° to D POINT, and heading 114° to J POINT.

DEP-RWY21 (South)

After departure turn left proceed eastbound (heading 120°) until 2.5 DME then heading 105° to D POINT, heading 191° to P POINT, heading 234° to O POINT, and heading 204° to N POINT.

Reporting points	Landmark	Radial / DME from KKN VOR	Coordinates	
			Latitude	Longitude
"D" or DELTA Point	Wang Yang Weir	R-124 / 11.0D	16° 22' 07.00" N	102° 56' 50.60" E
"J" or JULIETT Point	Ma Ha Sa Ra Kham University	R-118 / 30.0D	16° 14' 33.17" N	103° 15' 03.57" E
"N" or NOVEMBER Point	Mueang Pol	R-196 / 40.7D	15° 48' 44.90" N	102° 36' 26.90" E
"O" or OSCAR Point	Ban Phai (Road Intersection)	R-190 / 25.0D	16° 03' 27.30" N	102° 42' 57.50" E
"P" or PAPA Point	Khon Sak Creek	R-156 / 17.7D	16° 12' 04.70" N	102° 54' 53.80" E
KHON KAEN VOR/DME (KKN)	KHON KAEN VOR/DME Station	-	16° 28' 14.73" N	102° 47' 16.07" E

CHANGE: NEW CHART.