

VTPI AD 2.1 AERODROME LOCATION INDICATOR AND NAME

VTPI - NAKHON SAWAN/TAKHLI AIRPORT

VTPI AD 2.2 AERODROME GEOGRAPHICAL AND ADMINISTRATIVE DATA

1	ARP coordinates and site at AD	151638.35N 1001745.10E
2	Direction and distance from (city)	3NM WNW of Takhli
3	Elevation/Reference temperature	103 FT/28.2°C
4	Geoid Undulation at AD ELEV PSN	NIL
5	MAG VAR/Annual change	0.67°W (2017)
6	AD Administration, address, telephone, telefax, telex, AFS	Wing 4, Takhli Air Force Base, Takhli District Nakhon Sawan Province Tel: +665 626 1071-2 Ext. 53540-5 (Tower) +665 626 1071-2 Ext. 53546-7 +665 626 1071-2 Ext.54366 (ASR) +665 626 1071-2 Ext.53548-9 (BaseOps) AFS: VTPIYXYX
7	Types of traffic permitted (IFR/VFR)	IFR/VFR
8	Remarks	Operator: Royal Thai Air Force

VTPI AD 2.3 OPERATIONAL HOURS

1	Aerodrome Operator	0100-0900 MON-FRI
2	Customs and immigration	NIL
3	Health and sanitation	0100-0900 MON-FRI
4	AIS Briefing Office	0100-0900 MON-FRI
5	ATS Reporting Office (ARO)	0100-0900 MON-FRI
6	MET Briefing Office	0100-0900 MON-FRI
7	ATS	H24
8	Fuelling	NIL
9	Handling	NIL
10	Security	H24
11	De-icing	NIL
12	Remarks	NIL

VTPI AD 2.4 HANDLING SERVICES AND FACILITIES

1	Cargo-handling facilities	NIL
2	Fuel/oil types	JP8, Octane 100/130, Oil
3	Fuelling facilities/capacity	5JP8 trucks 20 000 L and 2 Octain trucks 6 000 L
4	De-icing facilities	NIL
5	Hangar space for visiting aircraft	NIL
6	Repair facilities for visiting aircraft	NIL
7	Remarks	NIL

VTPI AD 2.5 PASSENGER FACILITIES

1	Hotels	In the city (Takhli, Chainat)
2	Restaurants	Near Base and in downtown
3	Transportation	Bus and train
4	Medical facilities	Base dispensary and three ambulances
5	Bank and Post Office	In the city
6	Tourist Office	In the city
7	Remarks	NIL

VTPI AD 2.6 RESCUE AND FIRE FIGHTING SERVICES

1	AD category for fire fighting	Category 7
2	Rescue equipment	Yes
3	Capability for removal of disabled aircraft	Crane 24 T
4	Remarks	NIL

VTPI AD 2.7 SEASONAL AVAILABILITY - CLEARING

1	Types of clearing equipment	NIL
2	Clearance priorities	NIL
3	Remarks	The aerodrome is available all seasons.

VTPI AD 2.8 APRONS, TAXIWAYS AND CHECK LOCATIONS/POSITIONS DATA

1	Apron surface and strength	Surface: Concrete Strength: PCN 80/R/D/X/T
2	Taxiway width, surface and strength	Width: 23 M Surface: Concrete Strength: PCN 80/R/D/X/T
3	Altimeter checkpoint location and elevation	Location: North or South holding area Elevation: 103 FT/65 FT
4	VOR checkpoints	NIL
5	INS checkpoints	NIL
6	Remarks	NIL

VTPI AD 2.9 SURFACE MOVEMENT GUIDANCE AND CONTROL SYSTEM AND MARKINGS

1	Use of aircraft stand ID signs, TWY guide lines and visual docking/parking guidance system of aircraft stands	Yellow guide line are painted
2	RWY and TWY markings and LGT	RWY and TWY: Marked and lighted
3	Stop bars	NIL
4	Remarks	NIL

VTPI AD 2.10 AERODROME OBSTACLES

In approach/TKOF areas			In circling areas and at AD		Remarks
1			2		3
RWY/Area affected	Obstacle type Elevation Markings/LGT	Coordinates	Obstacle type Elevation Markings/LGT	Coordinates	
a	b	c	a	b	
NIL	NIL	NIL	Radio Mast on Top of ATC Tower HGT 189 FT Painted red/white LGTD on top	151644.41N 1001731.63E	NIL

VTPI AD 2.11 METEOROLOGICAL INFORMATION PROVIDED

1	Associated MET Office	Takhli
2	Hours of service MET Office outside hours	H24
3	Office responsible for TAF preparation Periods of validity	00, 06, 12
4	Type of landing forecast Interval of issuance	Trend 2 HR
5	Briefing/consultation provided	Personal Consultation
6	Flight documentation Language(s) used	English
7	Charts and other information available for briefing or consultation	Personal Consultation
8	Supplementary equipment available for providing information	Telefax Self - Briefing Terminal
9	ATS units provided with information	Takhli TWR Takhli APP
10	Additional information (limitation of service, etc.)	NIL

VTPI AD 2.12 RUNWAY PHYSICAL CHARACTERISTICS

Designations RWY NR	TRUE BRG	Dimensions of RWY(M)	Strength (PCN) and surface of RWY and SWY	THR coordinates RWY end coordinates THR geoid undulation	THR elevation and highest elevation of TDZ of precision APP RWY
1	2	3	4	5	6
18	181.28°	3000x45	PCN 80/R/D/X/T Concrete	151727.00N 1001746.22E	103 FT
36	001.28°	3000x45	PCN 80/R/D/X/T Concrete	151549.66N 1001743.98E	65 FT

Slope of RWY-SWY	SWY dimensions (M)	CWY dimensions (M)	Strip dimensions (M)	OFZ	Remarks
7	8	9	10	11	12
53%	300x45	NIL	NIL	NIL	NIL
53%	300x45	NIL	NIL	NIL	NIL

VTPI AD 2.13 DECLARED DISTANCES

RWY Designator	TORA (M)	TODA (M)	ASDA (M)	LDA (M)	Remarks
1	2	3	4	5	6
18	3000	3000	3300	3000	NIL
36	3000	3000	3300	3000	NIL

VTPI AD 2.14 APPROACH AND RUNWAY LIGHTING

RWY Designator	APCH LGT type LEN INTST	THR LGT colour WBAR	VASIS (MEHT) PAPI	TDZ, LGT LEN	RWY Centre Line LGT Length, spacing, colour, INTST	RWY edge LGT LEN, spacing, colour INTST	RWY End LGT colour WBAR	SWY LGT LEN (M) colour	Remarks
1	2	3	4	5	6	7	8	9	10
18	NIL	Green	PAPI Both 3°	NIL	NIL	3000 M 45 M White, LIH	Red	NIL	NIL
36	NIL	Green	PAPI Both 3°	NIL	NIL	3000 M 45 M White, LIH	Red	NIL	NIL

VTPI AD 2.15 OTHER LIGHTING, SECONDARY POWER SUPPLY

1	ABN/IBN location, characteristics and hours of operation	Alternating white and green lights installed on top of ATC Tower.
2	LDI location and LGT Anemometer location and LGT	NIL
3	TWY edge and centre line lighting	TWY edge light
4	Secondary power supply/switch-over time	RWY, TWY, APP AND PAPI light
5	Remarks	NIL

VTPI AD 2.16 HELICOPTER LANDING AREA

1	Coordinates TLOF or THR of FATO Geoid undulation	NIL
2	TLOF and/or FATO elevation M/FT	NIL
3	TLOF and FATO area dimensions, surface, strength, marking	NIL
4	True and MAG BRG of FATO	NIL
5	Declared distance available	NIL
6	APP and FATO lighting	NIL
7	Remarks	NIL

VTPI AD 2.17 ATS AIRSPACE

1	Designation and lateral limits	A circle of 5 NM radius centred on 151638.35N 1001745.10E
2	Vertical limits	2000 FT/AGL
3	Airspace classification	C
4	ATS unit call sign Language(s)	Takhli Tower English, Thai
5	Transition altitude	11000 FT
6	Remarks	NIL

VTPI AD 2.18 ATS COMMUNICATION FACILITIES

Service designation	Call sign	Frequency	Hours of operation	Remarks
1	2	3	4	5
APP	Takhli Approach	325.0 MHZ 124.0 MHZ	H24	Secondary Operation
ASR	Takhli Arrival	325.0 MHZ 124.0 MHZ	0100-0900 weekdays MON-FRI (Except public holiday or on request 1 HR prior notice required to ATC)	Radar Approach Primary Operation during weekdays
ASR	Takhli Departure	282.5 MHZ 134.1 MHZ		
SRA	Final Controller	382.4 MHZ		
TWR	Takhli Tower	241.5 MHZ 133.25 MHZ *121.5 MHZ *243.0 MHZ	H24	*Emergency Freq
GND	Takhli Ground	236.6 MHZ 257.8 MHZ 121.75 MHZ	H24	
ATIS		253.0 MHZ	0100-0900, MON-FRI (Ex- ception, SAT-SUN)	

VTPI AD 2.19 RADIO NAVIGATION AND LANDING AIDS

Type of aid, MAG VAR CAT of ILS/MLS (For VOR/ILS/MLS, give declination)	ID	Frequency	Hours of operation	Position of transmitting antenna coordinates	Elevation of DME transmitting antenna	Remarks
1	2	3	4	5	6	7
NDB	TL	350 KHZ	H24	151633.45N 1001751.11E	NIL	Military used and/or civil aircrafts used in military services only
TACAN	TKL	CH 95X	23:00-11:00	151629.13N 1001756.62E		
ILS CAT I LOC	ITKL	108.7 MHZ	MON-FRI 01:00-09:00	151539.28N 1001743.75E		
GP/DME		330.5 MHZ CH 24X	MON-FRI 01:00-09:00	151715.60N 1001751.09E		
MM		75 MHZ	MON-FRI 01:00-09:00	151759.72N 1001746.97E		

VTPI AD 2.20 LOCAL AERODROME REGULATIONS

NIL

VTPI AD 2.21 NOISE ABATEMENT PROCEDURES

NIL

VTPI AD 2.22 FLIGHT PROCEDURES

NIL

VTPI AD 2.23 ADDITIONAL INFORMATION

- Runway18/36 RAG installed and in operations details as follows:

BAK14: 396 M from threshold cable height 3 inches.

NET BARRIER: height 3.7 M position 25 M from end of runway

VTPI AD 2.24 CHARTS RELATED TO AN AERODROME

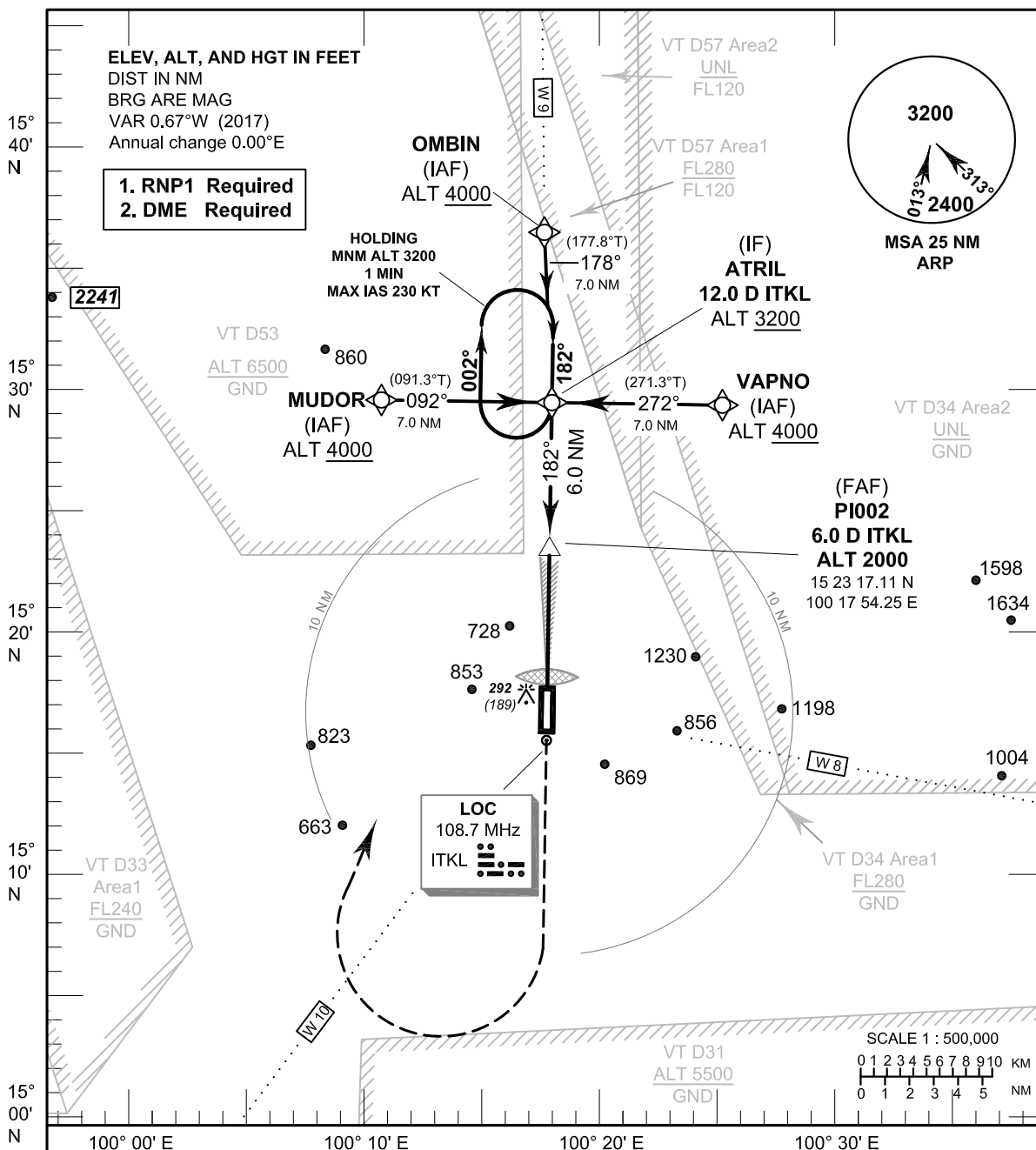
Chart name	Page
Instrument Approach Chart - ICAO - ILS or LOC y RWY 18	AD 2-VTPI-8-1
Instrument Approach Chart - ICAO - ILS or LOC y RWY 18 (Tabular description)	AD 2-VTPI-8-2
Instrument Approach Chart - ICAO - ILS or LOC y RWY 18 (Fix and point list table)	AD 2-VTPI-8-3
Instrument Approach Chart - ICAO - ILS or LOC z RWY 18	AD 2-VTPI-8-5
Instrument Approach Chart - ICAO - ILS or LOC z RWY 18 (Tabular description)	AD 2-VTPI-8-6
Instrument Approach Chart - ICAO - RNAV (GNSS) RWY 18	AD 2-VTPI-8-7
Instrument Approach Chart - ICAO - RNAV (GNSS) RWY 18 (Tabular description)	AD 2-VTPI-8-8
Instrument Approach Chart - ICAO - RNAV (GNSS) RWY 36	AD 2-VTPI-8-9
Instrument Approach Chart - ICAO - RNAV (GNSS) RWY 36 (Tabular description)	AD 2-VTPI-8-10

INTENTIONALLY BLANK

INSTRUMENT AERODROME ELEV 103 FT
APPROACH HEIGHTS RELATED TO
CHART-ICAO THR RWY18 - ELEV 103 FT

APP : 124.0, 325.0
 TWR : 133.25, 241.5
 GND : 121.75, 257.8

NAKHON SAWAN/Takhli (VTPI)
ILS or LOC y RWY18



Missed Approach :
No turn before MAPt (for LOC only).
 Climb on track 182° to 3000 FT,
 then turn right direct to IF at 3200 FT
 and hold or as directed by ATC.

TA 11000
 3200 (3097) (IF)

ILS RDH 50 FT
 ELEV 103 FT
 (THR RWY 18)

GP/DME
 MAPt MM (LOC only) 540 (437)
 GP 3.0° (5.2%)
 (FAF) 2000 (1897)
 182°

OCA/H	A	B	C	D	GS out	Distance (ITKL)	1.4 D	2 D	3 D	4 D	5 D	FAF
Straight-in approach CAT I	310 (207)				320	Altitude (Height)	540 (437)	720 (617)	1040 (937)	1355 (1252)	1670 (1567)	2000 (1897)
	540 (437)					Ground Speed	knot	70	90	100	120	140
LOC Only	1380 (1277)				320	Rate of descent (3.0°)	(ft/min)	372	478	531	637	849
Circling (OCH AAL)												

CHANGE: VT D33, MORSE CODE OF RADIO NAVIGATION AIDS ADDED.

October 2018

MILITARY USE ONLY

INSTRUMENT AERODROME ELEV 103 FT
APPROACH HEIGHTS RELATED TO
CHART-ICAO THR RWY18 - ELEV 103 FT

NAKHON SAWAN/Takhli (VTPI)
ILS or LOC y RWY18

TABULAR DESCRIPTION

ILS or LOC y RWY18											
Serial Number	Path Descriptor	Waypoint Identifier	Flyover	Course ° M (° T)	Magnetic Variation	Distance (NM)	Turn Direction	Altitude (FT)	Speed (KT)	VPA/ RDH	Navigation Specification
010	IF	MUDOR (IAF)	-	-	+0.67	-	-	+4000	-	-	RNP 1
020	TF	ATRL (IF)	-	092°(091.3°)	+0.67	7.0	-	+3200	-	-	RNP 1
010	IF	OMBIN (IAF)	-	-	+0.67	-	-	+4000	-	-	RNP 1
020	TF	ATRL (IF)	-	178°(177.8°)	+0.67	7.0	-	+3200	-	-	RNP 1
010	IF	VAPNO (IAF)	-	-	+0.67	-	-	+4000	-	-	RNP 1
020	TF	ATRL (IF)	-	272°(271.3°)	+0.67	7.0	-	+3200	-	-	RNP 1
010	IF	ATRL (IF)	-	-	+0.67	-	-	+3200	-	-	RNP 1
TRANSITION TO ILS or LOC											
020	TF	PI002 (FAF)	-	182°(181.3°)	+0.67	6.0	-	@2000	-	-	ILS
030	TF	PI001 (MAPt)	Y	182°(181.3°)	+0.67	5.3	-	@312	-	-3.0 / 50	ILS
040	CA	-	-	182°(181.3°)	+0.67	-	-	+3000	-	-	RNP 1
050	DF	ATRL (IF)	-	-	+0.67	-	R	+3200	-	-	RNP 1
060	HM	ATRL (IF)	Y	182°(181.3°)	+0.67	1 minute	R	+3200	-230	-	RNP 1

WAYPOINT LIST

ILS or LOC y RWY18		
Waypoint Identifier	Coordinates	
MUDOR	15° 29' 27.84" N	100° 10' 47.71" E
OMBIN	15° 36' 20.02" N	100° 17' 46.07" E
VAPNO	15° 29' 09.03" N	100° 25' 17.38" E
ATRL	15° 29' 18.56" N	100° 18' 02.55" E
PI002	15° 23' 17.11" N	100° 17' 54.25" E
PI001	15° 17' 59.72" N	100° 17' 46.97" E
THR18	15° 17' 27.00" N	100° 17' 46.22" E

MILITARY USE ONLY

INSTRUMENT AERODROME ELEV 103 FT
APPROACH HEIGHTS RELATED TO
CHART-ICAO THR RWY18 - ELEV 103 FT

NAKHON SAWAN/Takhli (VTPI)
ILS or LOC y RWY18

Fix / Point		Coordinates	
(IF) ATRIL	12.0 D ITKL	15 29 18.56 N	100 18 02.55 E
(FAF) PI002	6.0 D ITKL	15 23 17.11 N	100 17 54.25 E
MAPt (LOC only) @ MM	0.7 D ITKL	15 17 59.72 N	100 17 46.97 E
LOC	ITKL	15 15 39.28 N	100 17 43.75 E
GP/DME	ITKL	15 17 15.60 N	100 17 51.09 E

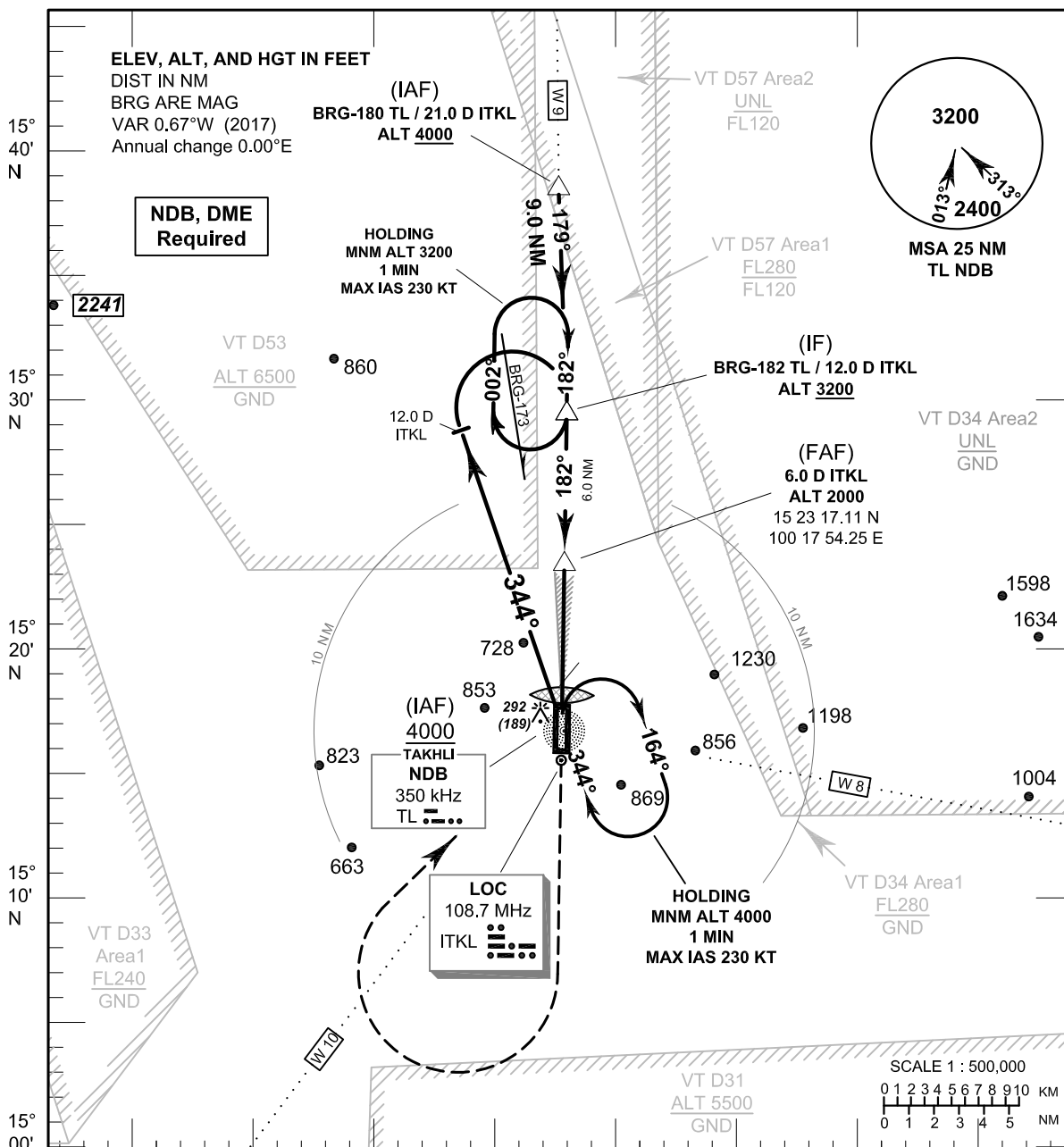
MILITARY USE ONLY

INTENTIONALLY BLANK

INSTRUMENT AERODROME ELEV 103 FT
APPROACH HEIGHTS RELATED TO
CHART-ICAO THR RWY18 - ELEV 103 FT

APP : 124.0, 325.0
 TWR : 133.25, 241.5
 GND : 121.75, 257.8

NAKHON SAWAN/Takhli (VTPI)
ILS or LOC z RWY18



Missed Approach :
 No turn before MAPt (for LOC only).
 Climb straight ahead to 3000 FT,
 then turn right to intercept inbound
 BRG-001 TL NDB, then proceed to
 IF at 3200 FT and hold
 or as directed by ATC.

ILS RDH 50 FT
 ELEV 103 FT
 (THR RWY 18)

OCA/H	C	D	GS out	Distance (ITKL)	1.4 D	2 D	3 D	4 D	5 D	FAF	
Straight-in approach CAT I	310 (207)			Altitude (Height)	540 (437)	720 (617)	1040 (937)	1355 (1252)	1670 (1567)	2000 (1897)	
				Ground Speed	knot	70	90	100	120	140	160
LOC Only	540 (437)			Rate of descent (3.0°)	(ft/min)	372	478	531	637	743	849
Circling (OCH AAL)	1380 (1277)										

October 2018

MILITARY USE ONLY

INSTRUMENT AERODROME ELEV 103 FT
APPROACH HEIGHTS RELATED TO
CHART-ICAO THR RWY18 - ELEV 103 FT

NAKHON SAWAN/Takhli (VTPI)
ILS or LOC z RWY18

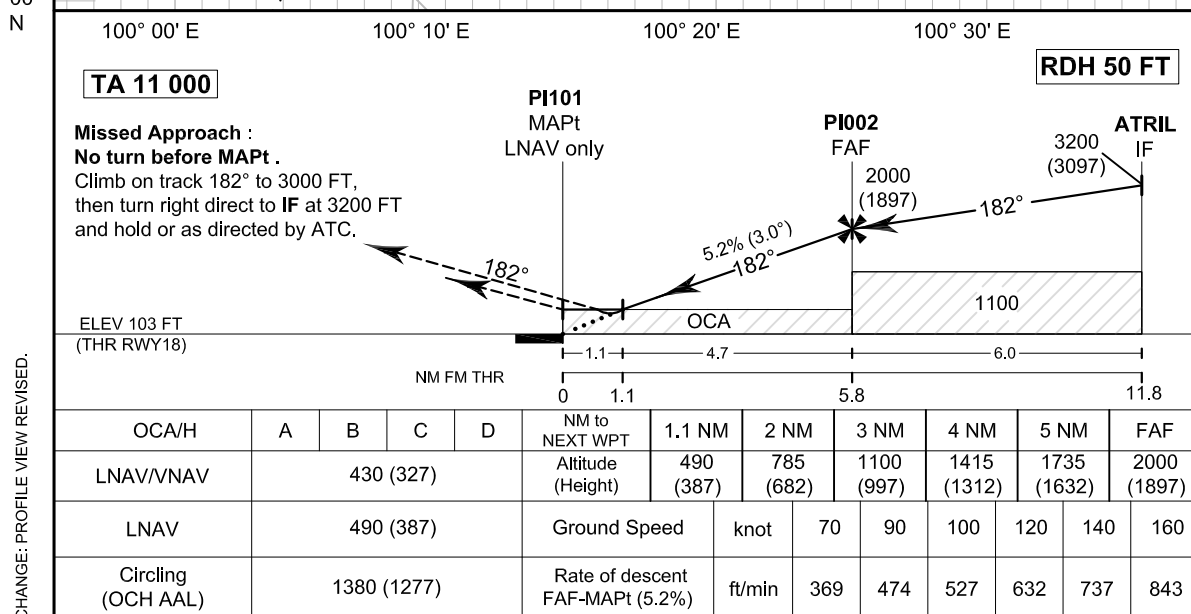
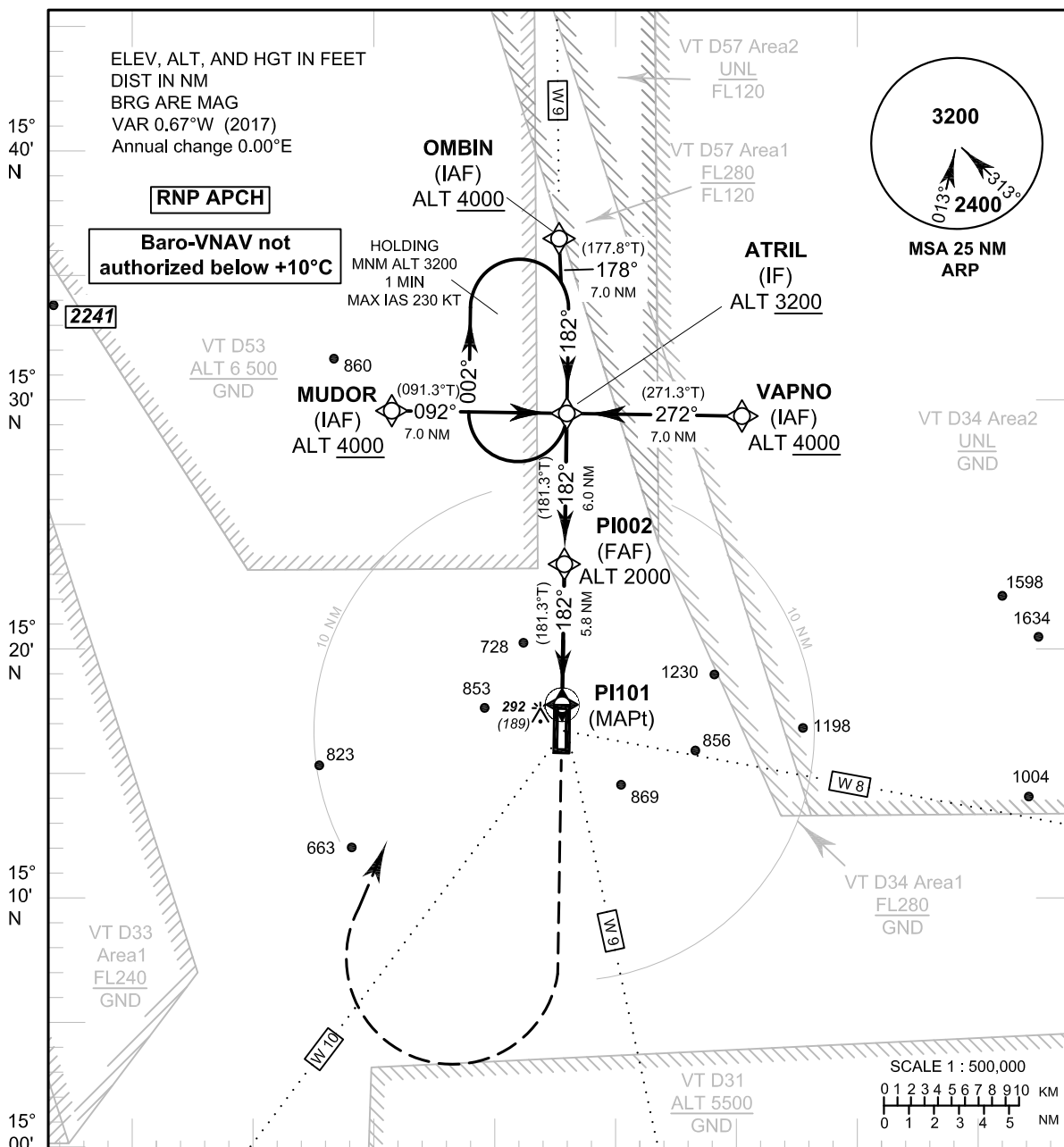
Fix / Point		Coordinates	
NDB (IAF)	TL	15 16 33.45 N	100 17 51.11 E
(IAF)	BRG - 180 TL / 21.0 D ITKL	15 38 20.90 N	100 17 45.57 E
(IF)	BRG - 182 TL / 12.0 D ITKL	15 29 18.56 N	100 18 02.55 E
(FAF)	6.0 D ITKL	15 23 17.11 N	100 17 54.25 E
MAPt (LOC only) @ MM	0.7 D ITKL	15 17 59.72 N	100 17 46.97 E
LOC	ITKL	15 15 39.28 N	100 17 43.75 E
GP/DME	ITKL	15 17 15.60 N	100 17 51.09 E

MILITARY USE ONLY

INSTRUMENT AERODROME ELEV 103 FT
APPROACH HEIGHTS RELATED TO
CHART-ICAO THR RWY18 - ELEV 103 FT

APP : 124.0, 325.0
TWR : 133.25, 241.5
GND : 121.75, 257.8

NAKHON SAWAN/Takhli (VTPI)
RNAV (GNSS) RWY18



October 2019

MILITARY USE ONLY

INSTRUMENT AERODROME ELEV 103 FT
APPROACH HEIGHTS RELATED TO
CHART-ICAO THR RWY18 - ELEV 103 FT

NAKHON SAWAN/Takhli (VTPI)
RNAV (GNSS) RWY18

TABULAR DESCRIPTION

RNAV (GNSS) RWY18											
Serial Number	Path Descriptor	Waypoint Identifier	Flyover	Course ° M (° T)	Magnetic Variation	Distance (NM)	Turn Direction	Altitude (FT)	Speed (KT)	VPA/TCH	Navigation Specification
010	IF	MUDOR (IAF)	-	-	+0.67	-	-	+4000	-	-	RNP APCH
020	TF	ATRIL (IF)	-	092°(091.3°)	+0.67	7.0	-	+3200	-	-	RNP APCH
010	IF	OMBIN (IAF)	-	-	+0.67	-	-	+4000	-	-	RNP APCH
020	TF	ATRIL (IF)	-	178°(177.8°)	+0.67	7.0	-	+3200	-	-	RNP APCH
010	IF	VAPNO (IAF)	-	-	+0.67	-	-	+4000	-	-	RNP APCH
020	TF	ATRIL (IF)	-	272°(271.3°)	+0.67	7.0	-	+3200	-	-	RNP APCH
010	IF	ATRIL (IF)	-	-	+0.67	-	-	+3200	-	-	RNP APCH
020	TF	PI002 (FAF)	-	182°(181.3°)	+0.67	6.0	-	@2000	-	-	RNP APCH
030	TF	PI101 (MAPt)	Y	182°(181.3°)	+0.67	5.8	-	@153	-	-3.0 / 50	RNP APCH
040	CA	-	-	182°(181.3°)	+0.67	-	-	+3000	-	-	RNP APCH
050	DF	ATRIL (IF)	-	-	+0.67	-	R	+3200	-	-	RNP APCH
060	HM	ATRIL (IF)	Y	182°(181.3°)	+0.67	1 minute	R	+3200	-230	-	RNP APCH

WAYPOINT LIST

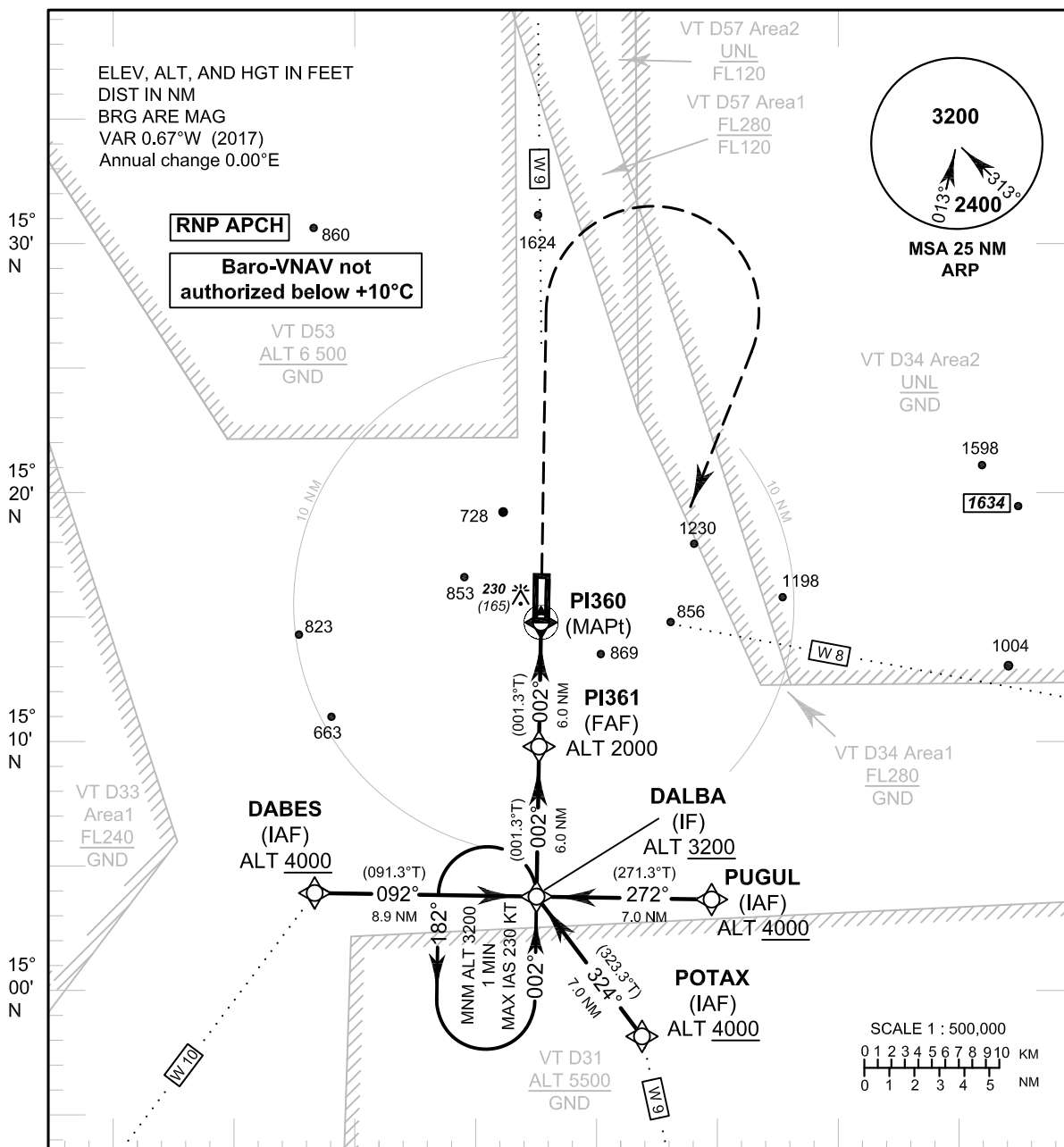
RNAV (GNSS) RWY18		
Waypoint Identifier	Coordinates	
MUDOR	15° 29' 27.84" N	100° 10' 47.71" E
OMBIN	15° 36' 20.02" N	100° 17' 46.07" E
VAPNO	15° 29' 09.03" N	100° 25' 17.38" E
ATRIL	15° 29' 18.56" N	100° 18' 02.55" E
PI002	15° 23' 17.11" N	100° 17' 54.25" E
PI101 (THR18)	15° 17' 27.00" N	100° 17' 46.22" E

MILITARY USE ONLY

INSTRUMENT AERODROME ELEV 103 FT
APPROACH HEIGHTS RELATED TO
CHART-ICAO THR RWY36 - ELEV 65 FT

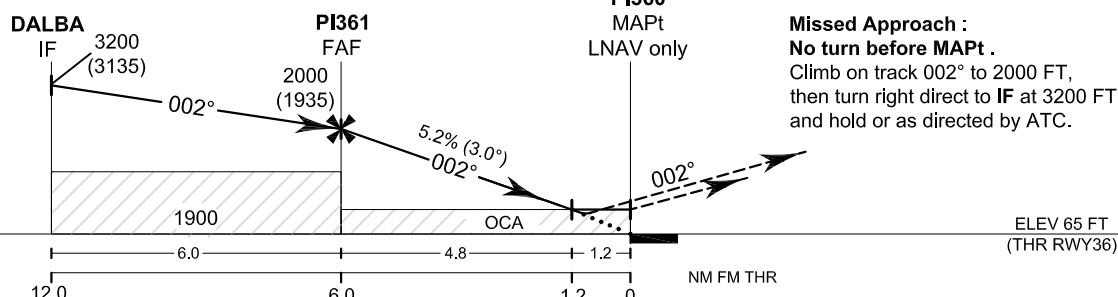
APP : 124.0, 325.0
TWR : 133.25, 241.5
GND : 121.75, 257.8

NAKHON SAWAN/Takhli (VTPI)
RNAV (GNSS) RWY36



RDH 50 FT

TA 11 000



CHANGE: PROFILE VIEW REVISED.

OCA/H	A	B	C	D	NM to NEXT WPT	FAF	5 NM	4 NM	3 NM	2 NM	1.2 NM
LNAV/VNAV	390 (325)				Altitude (Height)	2000 (1935)	1695 (1630)	1380 (1315)	1065 (1000)	745 (680)	480 (415)
LNAV	480 (415)				Ground Speed	knot	70	90	100	120	140
Circling (OCH AAL)	1380 (1277)				Rate of descent FAF-MAPt (5.2%)	(ft/min)	369	474	527	632	737

October 2019

MILITARY USE ONLY

INSTRUMENT AERODROME ELEV 103 FT
APPROACH HEIGHTS RELATED TO
CHART-ICAO THR RWY36 - ELEV 65 FT

NAKHON SAWAN/Takhli (VTPI)
RNAV (GNSS) RWY36

TABULAR DESCRIPTION

RNAV (GNSS) RWY36											
Serial Number	Path Descriptor	Waypoint Identifier	Flyover	Course ° M (° T)	Magnetic Variation	Distance (NM)	Turn Direction	Altitude (FT)	Speed (KT)	VPA/TCH	Navigation Specification
010	IF	DABES (IAF)	-	-	+0.67	-	-	+4000	-	-	RNP APCH
020	TF	DALBA (IF)	-	092°(091.3°)	+0.67	8.9	-	+3200	-	-	RNP APCH
010	IF	PUGUL (IAF)	-	-	+0.67	-	-	+4000	-	-	RNP APCH
020	TF	DALBA (IF)	-	272°(271.3°)	+0.67	7.0	-	+3200	-	-	RNP APCH
010	IF	POTAX (IAF)	-	-	+0.67	-	-	+4000	-	-	RNP APCH
020	TF	DALBA (IF)	-	324°(323.3°)	+0.67	7.0	-	+3200	-	-	RNP APCH
010	IF	DALBA (IF)	-	-	+0.67	-	-	+3200	-	-	RNP APCH
020	TF	PI361 (FAF)	-	002°(001.3°)	+0.67	6.0	-	@2000	-	-	RNP APCH
030	TF	PI360 (MAPt)	Y	002°(001.3°)	+0.67	6.0	-	@115	-	-3.0 / 50	RNP APCH
040	CA	-	-	002°(001.3°)	+0.67	-	-	+2000	-	-	RNP APCH
050	DF	DALBA (IF)	-	-	+0.67	-	R	+3200	-	-	RNP APCH
060	HM	DALBA (IF)	Y	002°(001.3°)	+0.67	1 minute	L	+3200	-230	-	RNP APCH

WAYPOINT LIST

RNAV (GNSS) RWY36		
Waypoint Identifier	Coordinates	
POTAX	14° 58' 08.57" N	100° 21' 46.67" E
DABES	15° 03' 58.51" N	100° 08' 17.43" E
PUGUL	15° 03' 37.27" N	100° 24' 41.32" E
DALBA	15° 03' 46.78" N	100° 17' 27.36" E
PI361	15° 09' 48.22" N	100° 17' 35.67" E
PI360 (THR36)	15° 15' 49.66" N	100° 17' 43.98" E

CHANGE: HM TURN DIRECTION.

MILITARY USE ONLY